

Converting Colors

CIELCh(68, 21.792, 75.639)

Have a look what the booklet for
CIELCh(68, 21.792, 75.639) contains.

CIELCh(68, 21.699, 75.591)	3
<i>Conversions</i>	4
<i>Details</i>	6
<i>Harmonies</i>	11
<i>Previews</i>	20
<i>Color Blindness Simulation</i>	23
<i>CSS Examples</i>	26

Color

CIELCh(68, 21.699, 75.591)

Conversions

Conversions Part 1

Format	Color
Hex	BDA180
RGB	189, 161, 128
RGB Percent	74%, 63%, 50%
CMY	0.2580, 0.3678, 0.4973
CMYK	0.00, 0.15, 0.32, 0.26
HSL	32°, 32%, 62%
HSV	32°, 32%, 74%
XYZ	37.7302, 37.9720, 25.8315
YIQ	165.6100, 27.2810, -4.3270

Conversions

Conversions Part 2

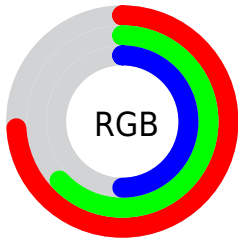
Format	Color
R _Y B	180, 189, 128
Decimal	12427648
CIE Lab	68.00, 5.40, 21.02
CIE LCh	68, 21.699, 75.591
Yxy	37.9720, 0.3716, 0.3740
Android (android.graphics.Color)	4290617728 (0xFFBDA180)
YUV	165.6100, -18.5417, 20.5130
Hunter-Lab	61.6215, 1.4562, 18.2809

Details

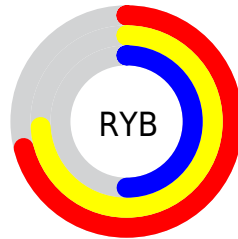
The CIELCh color $68, 21.699, 75.591$ is a light color, and the websafe version is hex `CC9966`. A complement of this color would be $63, 20.304, 264.919$, and the grayscale version is $68, 0.008, 296.813$.

A 20% lighter version of the original color is $88, 21.734, 76.048$, and $48, 21.670, 75.745$ is the 20% darker color. If you saturate the color by 10%, you get $65, 28.987, 74.271$, and if you desaturate by 10%, it is $71, 14.674, 76.898$.

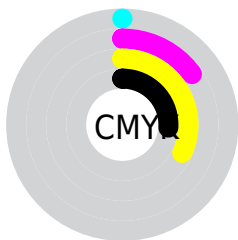
Distribution



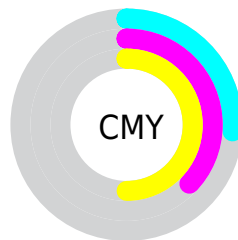
- Red (74%)
- Green (63%)
- Blue (50%)



- Red (71%)
- Yellow (74%)
- Blue (50%)



- Cyan (0%)
- Magenta (15%)
- Yellow (32%)
- Black (26%)



- Cyan (26%)
- Magenta (37%)
- Yellow (50%)

Brightness & Saturation Gradients

These gradients show how the CIELCh color 68, 21.699, 75.591 changes by changing the brightness by 10 percent. The first figure shows a shift by +10% for each color and the second figure -10%.

Similar to the brightness gradients but the following saturation gradients show a change of the CIELCh color 68, 21.699, 75.591 by changing the saturation by 10% instead.

■ 68, 21.699, 75.591

■ 68, 21.699, 75.591

■ 100, 21.699,
75.591

■ 58, 21.699, 75.591

■ 88, 21.699, 75.591

■ 48, 21.699, 75.591

■ 98, 21.699, 75.591

■ 38, 21.699, 75.591

■ 28, 21.699, 75.591

■ 18, 21.699, 75.591

■ 8, 21.699, 75.591

■ 0, 21.699, 75.591

■ 68, 21.699, 75.591

■ 68, 21.699, 75.591

■ 65, 28.987, 74.271

■ 71, 14.674, 76.898

63, 36.493, 72.914

73, 7.917, 78.161

60, 44.106, 71.507

76, 1.419, 79.225

58, 51.578, 69.993

79, 4.841, 260.732

56, 58.435, 68.245

82, 10.883,
261.868

54, 63.895, 66.025

84, 16.732,
262.984

52, 67.117, 64.009

87, 19.919,
259.547

89, 18.094,
243.396

92, 17.880,
225.558

Harmonies

Complementary

The Complementary color scheme is a pair of colors which are on the opposite of each other on the color wheel.



68, 21.699, 75.591



63, 20.304, 264.919

Rectangle

The Rectangle color scheme consists of four colors that form a rectangle on the color wheel.



68, 21.699, 75.591



68, 21.699, 125.591



68, 21.699, 255.591



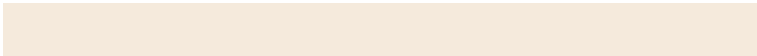
68, 21.699, 305.591

Sweetspot

The Sweet Spot groups the original color and five complimentary colors.



68, 21.699, 75.598



93, 7.936, 78.416



61, 28.363, 348.623



49, 5.427, 78.245



98, 0.011, 296.813



51, 0.007, 296.813

Same Dimension

The Same Dimension uses a secret algorithm to generate beautiful new colors.



68, 21.699, 75.598



84, 32.821, 74.622



75, 32.352, 108.567



38, 3.634, 78.514



44, 58.649, 64.549



6, 10.183, 64.337

Inverse Universe

The Inverse Universe completely reimagines the original color for something new.



63, 20.304, 264.919



77, 30.202, 266.541



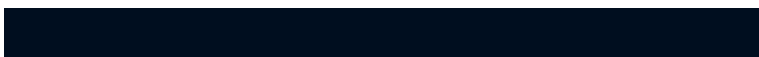
56, 34.997, 295.254



38, 3.578, 261.012



32, 54.105, 287.287



4, 12.030, 271.565

Previews

White Background



This preview shows how the CIELCh color 68, 21.699, 75.591 looks on a white background.

Color Contrast Check

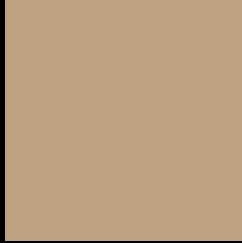
Large Text (above 18pt) WCAG AA × Fail

Any Text WCAG AA × Fail

Large Text (above 18pt) WCAG AAA × Fail

Any Text WCAG AAA × Fail

Black Background



This preview shows how the CIELCh color 68, 21.699, 75.591 looks on a black background.

Color Contrast Check

Large Text (above 18pt) WCAG AA ✓ Pass

Any Text WCAG AA ✓ Pass

Large Text (above 18pt) WCAG AAA ✓ Pass

Any Text WCAG AAA ✓ Pass

If you want to check with other color combinations, try the [Color Contrast Checker](#).

CIELCh 68, 21.699, 75.591

Background



This preview shows how black text looks on a background with the CIELCh color 68, 21.699, 75.591.



This preview shows how white text looks on a background with the CIELCh color 68, 21.699, 75.591.

Color Blindness Simulation

Color vision deficiency is a very complex topic, and I could not describe the different causes any better than Wikipedia does, so if you want to learn more, you should check out their [article about color blindness](#).

Dichromacy



Original Color

68, 21.699, 75.591

Protanopia

68, 20.192, 95.140

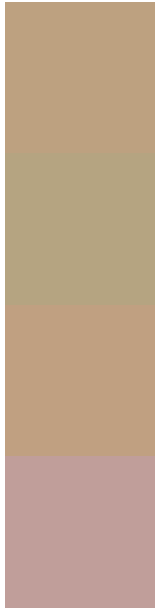
Deuteranopia

68, 22.265, 67.232



Tritanopia
68, 16.052, 356.825

Trichromacy



Original Color
68, 21.699, 75.591

Protanomaly
68, 20.454, 87.994

Deuteranomaly
68, 21.828, 70.539

Tritanomaly
68, 13.730, 29.710

Monochromacy



Original Color
68, 21.699, 75.591

Achromatopsia
68, 0.008, 296.813

Achromatomaly
68, 7.665, 78.568

CSS Examples

Text

The CSS property to change the color of the text to CIELCh 68, 21.699, 75.591 is called "color". The color property can be set on classes, ids or directly on the HTML element.

This example shows how text in the color `rgb(189, 161, 128)` looks like.

```
.text, #text, p{  
    color:rgb(189, 161, 128)  
}
```

If you want to add a text shadow in that color use the text-shadow property, you can generate a text shadow directly with our [CSS Text Shadow Generator](#).

Here you see how black text with a 4 pixel rgb(189, 161, 128) colored shadow looks like.

```
.shadow{ text-shadow: 4px 4px 2px rgb(189, 161, 128) }
```

Border

The CSS property to change the border of an element to CIELCh 68, 21.699, 75.591 is called "border". The border property can be set on classes, ids or directly on the HTML element.

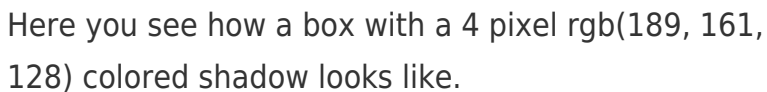
This example shows the color as border, it can be applied via the CSS property "border" or "border-color".

```
.border, #border, table{ border:4px solid rgb(189, 161, 128) }
```

If only the border color should be changed use the property `border-color`.

```
.border{ border-color:rgb(189, 161, 128) }
```

If you want to add a box shadow in that color use:



Here you see how a box with a 4 pixel `rgb(189, 161, 128)` colored shadow looks like.

```
.boxshadow{ -moz-box-shadow:4px 4px 4px 4px rgb(189, 161, 128); -webkit-box-shadow:4px 4px 4px 4px rgb(189, 161, 128); box-shadow:4px 4px 4px 4px rgb(189, 161, 128) }
```

Background

The CSS property to change the background color of an element to CIELCh 68, 21.699, 75.591 is called "background". The background property can be set on classes, ids or directly on the HTML element.

```
.background, #background, body{  
background: rgb(189, 161, 128) }
```

If only the background color should be changed can be used:

```
.background{ background-color: rgb(189,  
161, 128) }
```

This example shows the color as background, it is applied via the CSS property "background".

To optimize and compress your CSS code, you can use our [online CSS compressor and optimizer](#) based on csstidy. If you want to create a linear or radial gradient as background or border, check our [CSS Gradient Generator](#).

Hey! You found this booklet interesting? Support Converting Colors with the new Membership Option!

The pro membership hides all ads, plus gives you double the colors in the color bucket, and more awesome pro features!

[Learn more, Memberships starting at \\$2.50/m!](#)

**Follow me
on Twitter!**

@ConvertingColor