

Converting Colors

CIELCh(68, 21.866, 66.373)

Have a look what the booklet for
CIELCh(68, 21.866, 66.373) contains.

CIELCh(68, 21.835, 66.391)	3
<i>Conversions</i>	4
<i>Details</i>	6
<i>Harmonies</i>	11
<i>Previews</i>	20
<i>Color Blindness Simulation</i>	23
<i>CSS Examples</i>	26

Color

CIELCh(68, 21.835, 66.391)

Conversions

Conversions Part 1

Format	Color
Hex	C29F82
RGB	194, 159, 130
RGB Percent	76%, 62%, 51%
CMY	0.2384, 0.3757, 0.4895
CMYK	0.00, 0.18, 0.33, 0.24
HSL	27°, 34%, 64%
HSV	27°, 33%, 76%
XYZ	38.7700, 37.9720, 26.4682
YIQ	166.1590, 30.1690, -1.5990

Conversions

Conversions Part 2

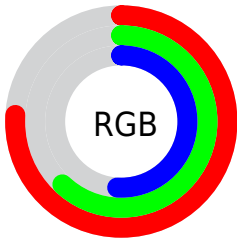
Format	Color
RYB	194, 183, 130
Decimal	12754818
CIELab	68.00, 8.74, 20.01
CIElCh	68, 21.835, 66.391
Yxy	37.9720, 0.3756, 0.3679
Android (android.graphics.Color)	4290944898 (0xFFC29F82)
YUV	166.1590, -17.8264, 24.4166
Hunter-Lab	61.6215, 4.4682, 17.6682

Details

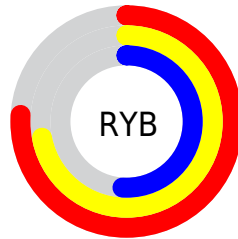
The CIELCh color **68, 21.835, 66.391** is a light color, and the websafe version is hex **CC9966**. A complement of this color would be **66, 19.383, 255.261**, and the grayscale version is **68, 0.008, 296.813**.

A 20% lighter version of the original color is **88, 21.788, 67.312**, and **48, 22.026, 67.681** is the 20% darker color. If you saturate the color by 10%, you get **65, 29.261, 65.270**, and if you desaturate by 10%, it is **71, 14.794, 67.532**.

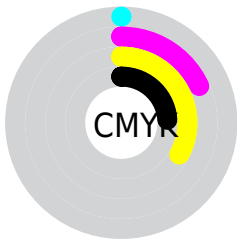
Distribution



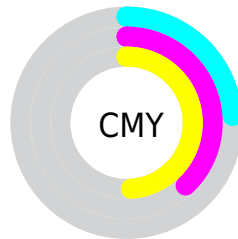
- Red (76%)
- Green (62%)
- Blue (51%)



- Red (76%)
- Yellow (72%)
- Blue (51%)



- Cyan (0%)
- Magenta (18%)
- Yellow (33%)
- Black (24%)



- Cyan (24%)
- Magenta (38%)
- Yellow (49%)

Brightness & Saturation Gradients

These gradients show how the CIELCh color 68, 21.835, 66.391 changes by changing the brightness by 10 percent. The first figure shows a shift by +10% for each color and the second figure -10%.

Similar to the brightness gradients but the following saturation gradients show a change of the CIELCh color 68, 21.835, 66.391 by changing the saturation by 10% instead.

68, 21.835, 66.391

68, 21.835, 66.391

100, 21.835,
66.391

58, 21.835, 66.391

88, 21.835, 66.391

48, 21.835, 66.391

98, 21.835, 66.391

38, 21.835, 66.391

28, 21.835, 66.391

18, 21.835, 66.391

8, 21.835, 66.391

0, 21.835, 66.391

68, 21.835, 66.391

68, 21.835, 66.391

65, 29.261, 65.270

71, 14.794, 67.532

62, 37.049, 64.150

74, 8.126, 68.657

59, 45.111, 63.017

78, 1.805, 69.628

56, 53.225, 61.807

81, 4.201, 251.068

54, 60.916, 60.369

84, 9.926, 252.117

52, 67.322, 58.395

87, 15.403,
253.176

50, 70.997, 56.758

90, 16.688,
240.926

93, 17.051,
217.744

96, 19.774,
198.554

Harmonies

Complementary

The Complementary color scheme is a pair of colors which are on the opposite of each other on the color wheel.



68, 21.835, 66.391



66, 19.383, 255.261

Rectangle

The Rectangle color scheme consists of four colors that form a rectangle on the color wheel.



68, 21.835, 66.391



68, 21.835, 116.391



68, 21.835, 246.391



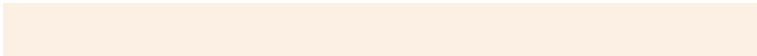
68, 21.835, 296.391

Sweetspot

The Sweet Spot groups the original color and five complimentary colors.



68, 21.835, 66.398



95, 7.697, 68.965



62, 31.123, 343.970



51, 5.315, 68.809



0, 0.000, 0.000



53, 0.007, 296.813

Same Dimension

The Same Dimension uses a secret algorithm to generate beautiful new colors.



68, 21.835, 66.398



83, 33.492, 65.532



76, 32.211, 104.786



39, 3.513, 69.050



42, 61.461, 57.333



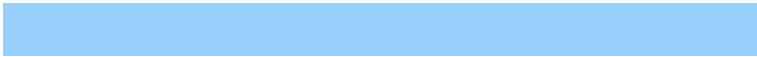
6, 11.466, 53.076

Inverse Universe

The Inverse Universe completely reimagines the original color for something new.



66, 19.383, 255.261



81, 28.802, 256.938



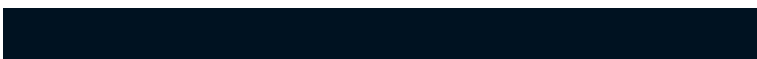
58, 34.641, 292.373



39, 3.413, 251.398



37, 46.038, 278.521



5, 12.189, 265.124

Previews

White Background



This preview shows how the CIELCh color 68, 21.835, 66.391 looks on a white background.

Color Contrast Check

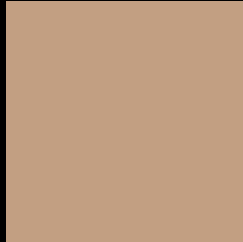
Large Text (above 18pt) WCAG AA × Fail

Any Text WCAG AA × Fail

Large Text (above 18pt) WCAG AAA × Fail

Any Text WCAG AAA × Fail

Black Background



This preview shows how the CIELCh color 68, 21.835, 66.391 looks on a black background.

Color Contrast Check

Large Text (above 18pt) WCAG AA ✓ Pass

Any Text WCAG AA ✓ Pass

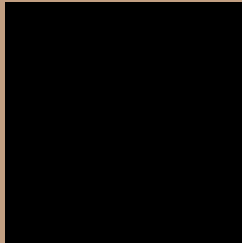
Large Text (above 18pt) WCAG AAA ✓ Pass

Any Text WCAG AAA ✓ Pass

If you want to check with other color combinations, try the [Color Contrast Checker](#).

CIELCh 68, 21.835, 66.391

Background



This preview shows how black text looks on a background with the CIELCh color 68, 21.835, 66.391.



This preview shows how white text looks on a background with the CIELCh color 68, 21.835, 66.391.

Color Blindness Simulation

Color vision deficiency is a very complex topic, and I could not describe the different causes any better than Wikipedia does, so if you want to learn more, you should check out their [article about color blindness](#).

Dichromacy



Original Color

68, 21.835, 66.391

Protanopia

68, 18.504, 95.499

Deuteranopia

68, 21.835, 66.391



Tritanopia
68, 18.267, 0.174

Trichromacy



Original Color
68, 21.835, 66.391

Protanomaly
68, 19.250, 84.271

Deuteranomaly
68, 21.835, 66.391

Tritanomaly
68, 16.508, 26.548

Monochromacy



Original Color
68, 21.835, 66.391

Achromatopsia
68, 0.008, 296.813

Achromatomaly
68, 7.658, 71.447

CSS Examples

Text

The CSS property to change the color of the text to CIELCh 68, 21.835, 66.391 is called "color". The color property can be set on classes, ids or directly on the HTML element.

This example shows how text in the color `rgb(194, 159, 130)` looks like.

```
.text, #text, p{  
    color:rgb(194, 159, 130)  
}
```

If you want to add a text shadow in that color use the text-shadow property, you can generate a text shadow directly with our [CSS Text Shadow Generator](#).

Here you see how black text with a 4 pixel rgb(194, 159, 130) colored shadow looks like.

```
.shadow{ text-shadow: 4px 4px 2px rgb(194, 159, 130) }
```

Border

The CSS property to change the border of an element to CIELCh 68, 21.835, 66.391 is called "border". The border property can be set on classes, ids or directly on the HTML element.

This example shows the color as border, it can be applied via the CSS property "border" or "border-color".

```
.border, #border, table{ border:4px solid rgb(194, 159, 130) }
```

If only the border color should be changed use the property `border-color`.

```
.border{ border-color:rgb(194, 159, 130) }
```

If you want to add a box shadow in that color use:

Here you see how a box with a 4 pixel `rgb(194, 159, 130)` colored shadow looks like.

```
.boxshadow{ -moz-box-shadow:4px 4px 4px  
4px rgb(194, 159, 130); -webkit-box-  
shadow:4px 4px 4px 4px rgb(194, 159, 130);  
box-shadow:4px 4px 4px 4px rgb(194, 159,  
130) }
```

Background

The CSS property to change the background color of an element to CIELCh 68, 21.835, 66.391 is called "background". The background property can be set on classes, ids or directly on the HTML element.

```
.background, #background, body{  
background: rgb(194, 159, 130) }
```

If only the background color should be changed can be used:

```
.background{ background-color: rgb(194,  
159, 130) }
```

This example shows the color as background, it is applied via the CSS property "background".

To optimize and compress your CSS code, you can use our [online CSS compressor and optimizer](#) based on csstidy. If you want to create a linear or radial gradient as background or border, check our [CSS Gradient Generator](#).

Hey! You found this booklet interesting? Support Converting Colors with the new Membership Option!

The pro membership hides all ads, plus gives you double the colors in the color bucket, and more awesome pro features!

[Learn more, Memberships starting at \\$2.50/m!](#)

**Follow me
on Twitter!**

@ConvertingColor