

Converting Colors

CIELCh(68, 22.044, 24.113)

Have a look what the booklet for
CIELCh(68, 22.044, 24.113) contains.

CIELCh(68, 22.295, 24.273)	3
<i>Conversions</i>	4
<i>Details</i>	6
<i>Harmonies</i>	11
<i>Previews</i>	20
<i>Color Blindness Simulation</i>	23
<i>CSS Examples</i>	26

Color

CIELCh(68, 22.295, 24.273)

Conversions

Conversions Part 1

Format	Color
Hex	CF9896
RGB	207, 152, 150
RGB Percent	81%, 60%, 59%
CMY	0.1878, 0.4035, 0.4114
CMYK	0.00, 0.27, 0.28, 0.19
HSL	2°, 37%, 70%
HSV	2°, 28%, 81%
XYZ	42.5166, 37.9720, 33.9820
YIQ	168.2170, 33.4220, 11.0380

Conversions

Conversions Part 2

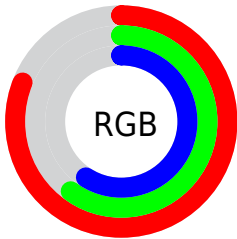
Format	Color
R_{YB}	207, 152, 150
Decimal	13605014
CIE _{Lab}	68.00, 20.32, 9.17
CIE _{LCh}	68, 22.295, 24.273
Yxy	37.9720, 0.3714, 0.3317
Android (android.graphics.Color)	4291795094 (0xFFCF9896)
YUV	168.2170, -8.9810, 34.0127
Hunter-Lab	61.6215, 15.3210, 10.4387

Details

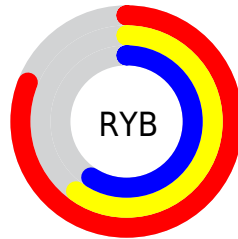
The CIELCh color **68, 22.295, 24.273** is a light color, and the websafe version is hex **CC9999**. A complement of this color would be **79, 18.443, 201.446**, and the grayscale version is **69, 0.009, 296.813**.

A 20% lighter version of the original color is **87, 18.230, 25.604**, and **48, 22.010, 25.182** is the 20% darker color. If you saturate the color by 10%, you get **63, 31.568, 25.409**, and if you desaturate by 10%, it is **73, 13.642, 23.416**.

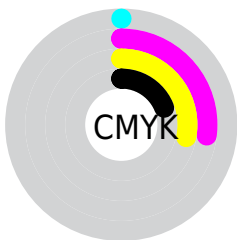
Distribution



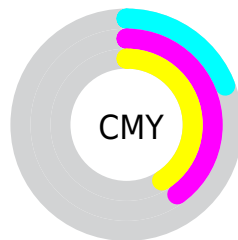
- Red (81%)
- Green (60%)
- Blue (59%)



- Red (81%)
- Yellow (60%)
- Blue (59%)



- Cyan (0%)
- Magenta (27%)
- Yellow (28%)
- Black (19%)



- Cyan (19%)
- Magenta (40%)
- Yellow (41%)


Brightness & Saturation Gradients

These gradients show how the CIELCh color 68, 22.295, 24.273 changes by changing the brightness by 10 percent. The first figure shows a shift by +10% for each color and the second figure -10%.

Similar to the brightness gradients but the following saturation gradients show a change of the CIELCh color 68, 22.295, 24.273 by changing the saturation by 10% instead.

 68, 22.295, 24.273

 68, 22.295, 24.273

 100, 22.295,
24.273

 58, 22.295, 24.273

 88, 22.295, 24.273

 48, 22.295, 24.273

 98, 22.295, 24.273

 38, 22.295, 24.273

 28, 22.295, 24.273

 18, 22.295, 24.273

 8, 22.295, 24.273

 0, 22.295, 24.273

 68, 22.295, 24.273

 68, 22.295, 24.273

 63, 31.568, 25.409

 73, 13.642, 23.416

■ 58, 41.392, 26.899

■ 79, 5.627, 22.720

■ 54, 51.605, 28.840

■ 85, 1.776, 202.662

■ 50, 61.943, 31.302

■ 90, 8.616, 202.045

■ 47, 72.002, 34.245

■ 96, 14.949,
201.743

■ 45, 81.035, 37.319

■ 97, 15.908,
198.448

■ 44, 87.559, 39.688

■ 43, 88.928, 40.321

Harmonies

Complementary

The Complementary color scheme is a pair of colors which are on the opposite of each other on the color wheel.



68, 22.295, 24.273



79, 18.443, 201.446

Rectangle

The Rectangle color scheme consists of four colors that form a rectangle on the color wheel.



68, 22.295, 24.273



68, 22.295, 74.273



68, 22.295, 204.273



68, 22.295, 254.273

Sweetspot

The Sweet Spot groups the original color and five complimentary colors.



68, 22.293, 24.279



95, 7.098, 22.759



69, 36.336, 326.861



50, 5.075, 22.862



0, 0.000, 0.000



53, 0.007, 296.813

Same Dimension

The Same Dimension uses a secret algorithm to generate beautiful new colors.



68, 22.293, 24.279



79, 32.365, 24.904



75, 19.662, 75.425



41, 4.308, 22.848



35, 75.972, 40.306



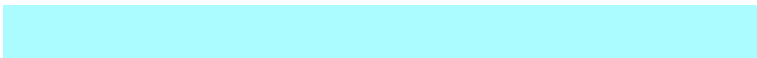
5, 19.590, 21.193

Inverse Universe

The Inverse Universe completely reimagines the original color for something new.



79, 18.443, 201.446



94, 25.572, 201.288



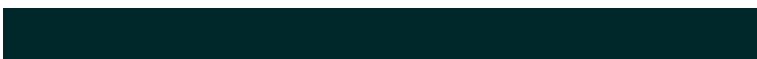
71, 18.524, 263.220



43, 4.057, 202.128



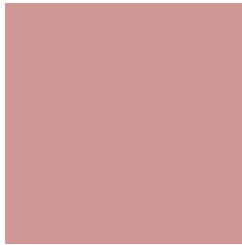
61, 34.996, 202.050



13, 13.500, 200.904

Previews

White Background



This preview shows how the CIELCh color 68, 22.295, 24.273 looks on a white background.

Color Contrast Check

Large Text (above 18pt) WCAG AA × Fail

Any Text WCAG AA × Fail

Large Text (above 18pt) WCAG AAA × Fail

Any Text WCAG AAA × Fail

Black Background



This preview shows how the CIE LCh color 68, 22.295, 24.273 looks on a black background.

Color Contrast Check

Large Text (above 18pt) WCAG AA ✓ Pass

Any Text WCAG AA ✓ Pass

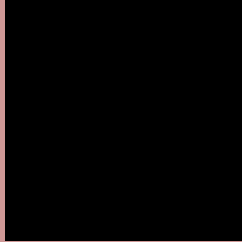
Large Text (above 18pt) WCAG AAA ✓ Pass

Any Text WCAG AAA ✓ Pass

If you want to check with other color combinations, try the [Color Contrast Checker](#).

CIELCh 68, 22.295, 24.273

Background



This preview shows how black text looks on a background with the CIELCh color 68, 22.295, 24.273.



This preview shows how white text looks on a background with the CIELCh color 68, 22.295, 24.273.

Color Blindness Simulation

Color vision deficiency is a very complex topic, and I could not describe the different causes any better than Wikipedia does, so if you want to learn more, you should check out their [article about color blindness](#).

Dichromacy





Tritanopia
68, 23.642, 5.768

Trichromacy



Original Color
68, 22.295, 24.273

Protanomaly
68, 10.065, 39.174

Deuteranomaly
68, 15.997, 36.494

Tritanomaly
68, 22.896, 12.115

Monochromacy



Original Color
68, 22.295, 24.273

Achromatopsia
69, 0.009, 296.813

Achromatomaly
68, 7.797, 24.057

CSS Examples

Text

The CSS property to change the color of the text to CIELCh 68, 22.295, 24.273 is called "color". The color property can be set on classes, ids or directly on the HTML element.

This example shows how text in the color `rgb(207, 152, 150)` looks like.

```
.text, #text, p{  
    color:rgb(207, 152, 150)  
}
```

If you want to add a text shadow in that color use the text-shadow property, you can generate a text shadow directly with our [CSS Text Shadow Generator](#).

Here you see how black text with a 4 pixel rgb(207, 152, 150) colored shadow looks like.

```
.shadow{ text-shadow: 4px 4px 2px rgb(207, 152, 150) }
```

Border

The CSS property to change the border of an element to CIELCh 68, 22.295, 24.273 is called "border". The border property can be set on classes, ids or directly on the HTML element.

This example shows the color as border, it can be applied via the CSS property "border" or "border-color".

```
.border, #border, table{ border:4px solid rgb(207, 152, 150) }
```

If only the border color should be changed use the property `border-color`.

```
.border{ border-color:rgb(207, 152, 150) }
```

If you want to add a box shadow in that color use:

Here you see how a box with a 4 pixel `rgb(207, 152, 150)` colored shadow looks like.

```
.boxshadow{ -moz-box-shadow:4px 4px 4px  
4px rgb(207, 152, 150); -webkit-box-  
shadow:4px 4px 4px 4px rgb(207, 152, 150);  
box-shadow:4px 4px 4px 4px rgb(207, 152,  
150) }
```

Background

The CSS property to change the background color of an element to CIELCh 68, 22.295, 24.273 is called "background". The background property can be set on classes, ids or directly on the HTML element.

```
.background, #background, body{  
background: rgb(207, 152, 150) }
```

If only the background color should be changed can be used:

```
.background{ background-color: rgb(207,  
152, 150) }
```

This example shows the color as background, it is applied via the CSS property "background".

To optimize and compress your CSS code, you can use our [online CSS compressor and optimizer](#) based on csstidy. If you want to create a linear or radial gradient as background or border, check our [CSS Gradient Generator](#).

Hey! You found this booklet interesting? Support Converting Colors with the new Membership Option!

The pro membership hides all ads, plus gives you double the colors in the color bucket, and more awesome pro features!

[Learn more, Memberships starting at \\$2.50/m!](#)

**Follow me
on Twitter!**

@ConvertingColor