

Converting Colors

CIELCh(68, 25.335, 27.271)

Have a look what the booklet for
CIELCh(68, 25.335, 27.271) contains.

CIELCh(68, 25.483, 26.652)	3
<i>Conversions</i>	4
<i>Details</i>	6
<i>Harmonies</i>	11
<i>Previews</i>	20
<i>Color Blindness Simulation</i>	23
<i>CSS Examples</i>	26

Color

CIELCh(68, 25.483, 26.652)

Conversions

Conversions Part 1

Format	Color
Hex	D49692
RGB	212, 150, 146
RGB Percent	83%, 59%, 57%
CMY	0.1679, 0.4111, 0.4268
CMYK	0.00, 0.29, 0.31, 0.17
HSL	4°, 44%, 70%
HSV	4°, 31%, 83%
XYZ	43.3395, 37.9720, 32.3076
YIQ	168.0820, 38.2360, 11.9000

Conversions

Conversions Part 2

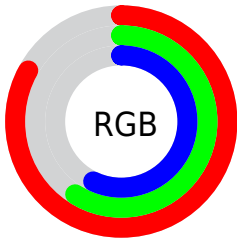
Format	Color
R _Y B	212, 150, 146
Decimal	13932178
CIE Lab	68.00, 22.78, 11.43
CIE LCh	68, 25.483, 26.652
Yxy	37.9720, 0.3814, 0.3342
Android (android.graphics.Color)	4292122258 (0xFFD49692)
YUV	168.0820, -10.8864, 38.5161
Hunter-Lab	61.6215, 17.7047, 12.0498

Details

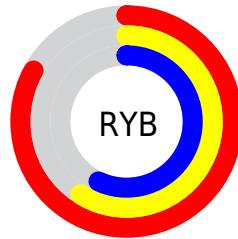
The CIELCh color `68, 25.483, 26.652` is a light color, and the websafe version is hex `CC9999`. A complement of this color would be `80, 20.444, 204.026`, and the grayscale version is `69, 0.009, 296.813`.

A 20% lighter version of the original color is `87, 19.238, 28.514`, and `48, 25.375, 26.529` is the 20% darker color. If you saturate the color by 10%, you get `63, 34.986, 27.765`, and if you desaturate by 10%, it is `73, 16.611, 25.828`.

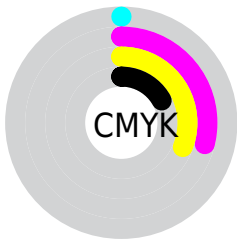
Distribution



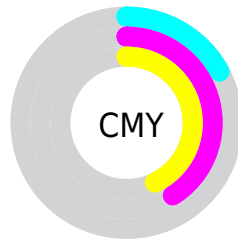
- Red (83%)
- Green (59%)
- Blue (57%)



- Red (83%)
- Yellow (59%)
- Blue (57%)



- Cyan (0%)
- Magenta (29%)
- Yellow (31%)
- Black (17%)



- Cyan (17%)
- Magenta (41%)
- Yellow (43%)

Brightness & Saturation Gradients

These gradients show how the CIELCh color 68, 25.483, 26.652 changes by changing the brightness by 10 percent. The first figure shows a shift by +10% for each color and the second figure -10%.

Similar to the brightness gradients but the following saturation gradients show a change of the CIELCh color 68, 25.483, 26.652 by changing the saturation by 10% instead.

68, 25.483, 26.652

68, 25.483, 26.652

100, 25.483,
26.652

58, 25.483, 26.652

88, 25.483, 26.652

48, 25.483, 26.652

98, 25.483, 26.652

38, 25.483, 26.652

28, 25.483, 26.652

18, 25.483, 26.652

8, 25.483, 26.652

0, 25.483, 26.652

68, 25.483, 26.652

68, 25.483, 26.652

63, 34.986, 27.765

73, 16.611, 25.828

■ 58, 45.042, 29.234

■ 79, 8.393, 25.194

■ 54, 55.476, 31.142

■ 84, 0.807, 24.107

■ 50, 66.001, 33.524

■ 90, 6.194, 204.607

■ 48, 76.118, 36.256

■ 96, 12.668,
204.337

■ 46, 84.798, 38.829

■ 97, 14.308,
198.552

■ 45, 90.231, 40.548

Harmonies

Complementary

The Complementary color scheme is a pair of colors which are on the opposite of each other on the color wheel.



68, 25.483, 26.652



80, 20.444, 204.026

Rectangle

The Rectangle color scheme consists of four colors that form a rectangle on the color wheel.



68, 25.483, 26.652



68, 25.483, 76.652



68, 25.483, 206.652



68, 25.483, 256.652

Sweetspot

The Sweet Spot groups the original color and five complimentary colors.



68, 25.481, 26.657



94, 7.827, 25.078



69, 41.358, 327.546



49, 5.471, 25.162



0, 0.000, 0.000



53, 0.007, 296.813

Same Dimension

The Same Dimension uses a secret algorithm to generate beautiful new colors.



68, 25.481, 26.657



77, 36.044, 27.315



76, 23.063, 76.602



42, 4.290, 25.097



36, 76.520, 40.641



5, 21.157, 22.786

Inverse Universe

The Inverse Universe completely reimagines the original color for something new.



80, 20.444, 204.026



93, 27.471, 203.967



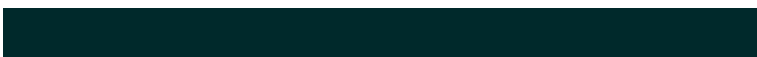
71, 21.724, 265.645



44, 4.038, 204.557



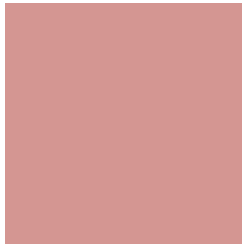
60, 34.323, 206.556



14, 13.632, 204.565

Previews

White Background



This preview shows how the CIELCh color 68, 25.483, 26.652 looks on a white background.

Color Contrast Check

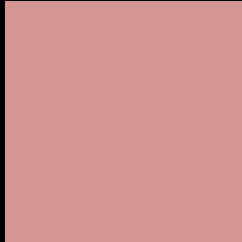
Large Text (above 18pt) WCAG AA × Fail

Any Text WCAG AA × Fail

Large Text (above 18pt) WCAG AAA × Fail

Any Text WCAG AAA × Fail

Black Background



This preview shows how the CIELCh color 68, 25.483, 26.652 looks on a black background.

Color Contrast Check

Large Text (above 18pt) WCAG AA ✓ Pass

Any Text WCAG AA ✓ Pass

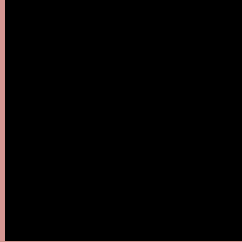
Large Text (above 18pt) WCAG AAA ✓ Pass

Any Text WCAG AAA ✓ Pass

If you want to check with other color combinations, try the [Color Contrast Checker](#).

CIELCh 68, 25.483, 26.652

Background



This preview shows how black text looks on a background with the CIELCh color 68, 25.483, 26.652.

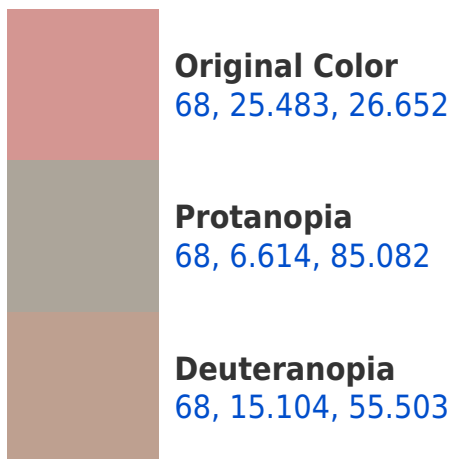


This preview shows how white text looks on a background with the CIELCh color 68, 25.483, 26.652.

Color Blindness Simulation

Color vision deficiency is a very complex topic, and I could not describe the different causes any better than Wikipedia does, so if you want to learn more, you should check out their [article about color blindness](#).

Dichromacy





Tritanopia
68, 26.736, 9.244

Trichromacy



Original Color
68, 25.483, 26.652

Protanomaly
68, 11.891, 44.635

Deuteranomaly
68, 18.245, 39.962

Tritanomaly
68, 25.764, 15.931

Monochromacy



Original Color
68, 25.483, 26.652

Achromatopsia
69, 0.009, 296.813

Achromatomaly
68, 8.661, 27.351

CSS Examples

Text

The CSS property to change the color of the text to CIELCh 68, 25.483, 26.652 is called "color". The color property can be set on classes, ids or directly on the HTML element.

This example shows how text in the color `rgb(212, 150, 146)` looks like.

```
.text, #text, p{  
    color:rgb(212, 150, 146)  
}
```

If you want to add a text shadow in that color use the text-shadow property, you can generate a text shadow directly with our [CSS Text Shadow Generator](#).

Here you see how black text with a 4 pixel rgb(212, 150, 146) colored shadow looks like.

```
.shadow{ text-shadow: 4px 4px 2px rgb(212, 150, 146) }
```

Border

The CSS property to change the border of an element to CIELCh 68, 25.483, 26.652 is called "border". The border property can be set on classes, ids or directly on the HTML element.

This example shows the color as border, it can be applied via the CSS property "border" or "border-color".

```
.border, #border, table{ border:4px solid rgb(212, 150, 146) }
```

If only the border color should be changed use the property border-color.

```
.border{ border-color:rgb(212, 150, 146) }
```

If you want to add a box shadow in that color use:

Here you see how a box with a 4 pixel rgb(212, 150, 146) colored shadow looks like.

```
.boxshadow{ -moz-box-shadow:4px 4px 4px  
4px rgb(212, 150, 146); -webkit-box-  
shadow:4px 4px 4px 4px rgb(212, 150, 146);  
box-shadow:4px 4px 4px 4px rgb(212, 150,  
146) }
```

Background

The CSS property to change the background color of an element to CIELCh 68, 25.483, 26.652 is called "background". The background property can be set on classes, ids or directly on the HTML element.

```
.background, #background, body{  
background: rgb(212, 150, 146) }
```

If only the background color should be changed can be used:

```
.background{ background-color: rgb(212,  
150, 146) }
```

This example shows the color as background, it is applied via the CSS property "background".

To optimize and compress your CSS code, you can use our [online CSS compressor and optimizer](#) based on csstidy. If you want to create a linear or radial gradient as background or border, check our [CSS Gradient Generator](#).

Hey! You found this booklet interesting? Support Converting Colors with the new Membership Option!

The pro membership hides all ads, plus gives you double the colors in the color bucket, and more awesome pro features!

[Learn more, Memberships starting at \\$2.50/m!](#)

**Follow me
on Twitter!**

@ConvertingColor