

Converting Colors

CIELCh(68, 26.239, 61.823)

Have a look what the booklet for
CIELCh(68, 26.239, 61.823) contains.

CIELCh(68, 26.278, 61.799)	3
<i>Conversions</i>	4
<i>Details</i>	6
<i>Harmonies</i>	11
<i>Previews</i>	20
<i>Color Blindness Simulation</i>	23
<i>CSS Examples</i>	26

Color

CIELCh(68, 26.278, 61.799)

Conversions

Conversions Part 1

Format	Color
Hex	CA9D7D
RGB	202, 157, 125
RGB Percent	79%, 62%, 49%
CMY	0.2093, 0.3857, 0.5111
CMYK	0.00, 0.22, 0.38, 0.21
HSL	25°, 42%, 64%
HSV	25°, 38%, 79%
XYZ	39.9336, 37.9720, 24.5137
YIQ	166.8070, 37.0920, -0.4120

Conversions

Conversions Part 2

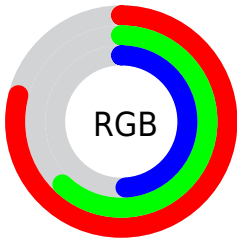
Format	Color
R _Y B	202, 180, 125
Decimal	13278589
CIE Lab	68.00, 12.42, 23.16
CIE LCh	68, 26.278, 61.799
Yxy	37.9720, 0.3899, 0.3708
Android (android.graphics.Color)	4291468669 (0xFFCA9D7D)
YUV	166.8070, -20.6109, 30.8643
Hunter-Lab	61.6215, 7.8389, 19.5488

Details

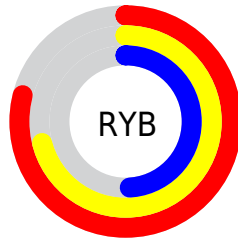
The CIELCh color **68, 26.278, 61.799** is a light color, and the websafe version is hex **CC9966**. A complement of this color would be **67, 22.230, 251.687**, and the grayscale version is **68, 0.008, 296.813**.

A 20% lighter version of the original color is **88, 24.710, 65.397**, and **48, 26.076, 62.296** is the 20% darker color. If you saturate the color by 10%, you get **65, 34.202, 60.831**, and if you desaturate by 10%, it is **71, 18.797, 62.809**.

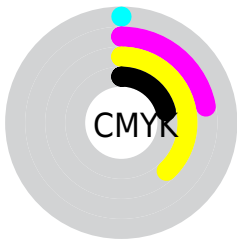
Distribution



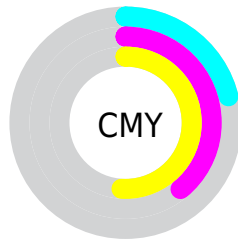
- Red (79%)
- Green (62%)
- Blue (49%)



- Red (79%)
- Yellow (71%)
- Blue (49%)



- Cyan (0%)
- Magenta (22%)
- Yellow (38%)
- Black (21%)



- Cyan (21%)
- Magenta (39%)
- Yellow (51%)

Brightness & Saturation Gradients

These gradients show how the CIELCh color 68, 26.278, 61.799 changes by changing the brightness by 10 percent. The first figure shows a shift by +10% for each color and the second figure -10%.

Similar to the brightness gradients but the following saturation gradients show a change of the CIELCh color 68, 26.278, 61.799 by changing the saturation by 10% instead.

68, 26.278, 61.799

68, 26.278, 61.799

100, 26.278,
61.799

58, 26.278, 61.799

88, 26.278, 61.799

48, 26.278, 61.799

98, 26.278, 61.799

38, 26.278, 61.799

28, 26.278, 61.799

18, 26.278, 61.799

8, 26.278, 61.799

0, 26.278, 61.799

68, 26.278, 61.799

68, 26.278, 61.799

65, 34.202, 60.831

71, 18.797, 62.809

62, 42.528, 59.881

75, 11.756, 63.832

59, 51.114, 58.920

78, 5.128, 64.837

56, 59.627, 57.841

82, 1.124, 246.364

53, 67.371, 56.403

85, 7.039, 247.086

51, 73.417, 54.301

89, 12.657,
248.089

50, 74.498, 53.959

92, 14.607,
233.106

95, 16.321,
205.877

97, 17.604,
198.339

Harmonies

Complementary

The Complementary color scheme is a pair of colors which are on the opposite of each other on the color wheel.



68, 26.278, 61.799



67, 22.230, 251.687

Rectangle

The Rectangle color scheme consists of four colors that form a rectangle on the color wheel.



68, 26.278, 61.799



68, 26.278, 111.799



68, 26.278, 241.799



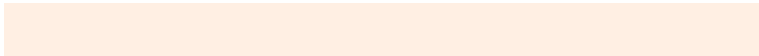
68, 26.278, 291.799

Sweetspot

The Sweet Spot groups the original color and five complimentary colors.



68, 26.278, 61.805



95, 8.430, 64.545



62, 38.273, 341.894



50, 5.688, 64.407



0, 0.000, 0.000



53, 0.007, 296.813

Same Dimension

The Same Dimension uses a secret algorithm to generate beautiful new colors.



68, 26.278, 61.805



81, 39.336, 60.979



78, 36.580, 101.749



41, 3.608, 64.718



42, 64.129, 54.522



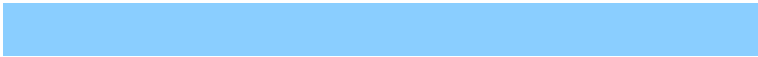
7, 14.566, 47.854

Inverse Universe

The Inverse Universe completely reimagines the original color for something new.



67, 22.230, 251.687



80, 31.873, 253.686



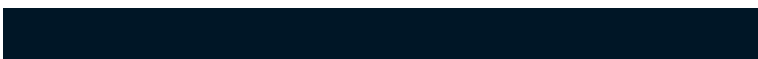
57, 39.480, 291.168



41, 3.485, 246.936



40, 43.761, 274.019



7, 13.618, 262.185

Previews

White Background



This preview shows how the CIELCh color 68, 26.278, 61.799 looks on a white background.

Color Contrast Check

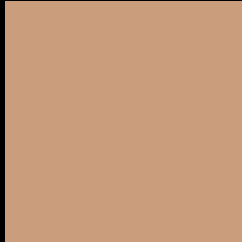
Large Text (above 18pt) WCAG AA × Fail

Any Text WCAG AA × Fail

Large Text (above 18pt) WCAG AAA × Fail

Any Text WCAG AAA × Fail

Black Background



This preview shows how the CIELCh color 68, 26.278, 61.799 looks on a black background.

Color Contrast Check

Large Text (above 18pt) WCAG AA ✓ Pass

Any Text WCAG AA ✓ Pass

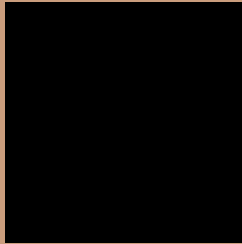
Large Text (above 18pt) WCAG AAA ✓ Pass

Any Text WCAG AAA ✓ Pass

If you want to check with other color combinations, try the [Color Contrast Checker](#).

CIELCh 68, 26.278, 61.799

Background



This preview shows how black text looks on a background with the CIELCh color 68, 26.278, 61.799.



This preview shows how white text looks on a background with the CIELCh color 68, 26.278, 61.799.

Color Blindness Simulation

Color vision deficiency is a very complex topic, and I could not describe the different causes any better than Wikipedia does, so if you want to learn more, you should check out their [article about color blindness](#).

Dichromacy



Original Color

68, 26.278, 61.799

Protanopia

68, 20.723, 95.397

Deuteranopia

68, 25.035, 69.431



Tritanopia
68, 22.085, 4.408

Trichromacy



Original Color
68, 26.278, 61.799

Protanomaly
68, 22.020, 82.216

Deuteranomaly
68, 25.506, 66.560

Tritanomaly
68, 20.809, 27.282

Monochromacy



Original Color
68, 26.278, 61.799

Achromatopsia
68, 0.008, 296.813

Achromatomaly
68, 9.151, 65.584

CSS Examples

Text

The CSS property to change the color of the text to CIELCh 68, 26.278, 61.799 is called "color". The color property can be set on classes, ids or directly on the HTML element.

This example shows how text in the color `rgb(202, 157, 125)` looks like.

```
.text, #text, p{  
    color:rgb(202, 157, 125)  
}
```

If you want to add a text shadow in that color use the text-shadow property, you can generate a text shadow directly with our [CSS Text Shadow Generator](#).

Here you see how black text with a 4 pixel rgb(202, 157, 125) colored shadow looks like.

```
.shadow{ text-shadow: 4px 4px 2px rgb(202, 157, 125) }
```

Border

The CSS property to change the border of an element to CIELCh 68, 26.278, 61.799 is called "border". The border property can be set on classes, ids or directly on the HTML element.

This example shows the color as border, it can be applied via the CSS property "border" or "border-color".

```
.border, #border, table{ border:4px solid rgb(202, 157, 125) }
```

If only the border color should be changed use the property border-color.

```
.border{ border-color:rgb(202, 157, 125) }
```

If you want to add a box shadow in that color use:

Here you see how a box with a 4 pixel rgb(202, 157, 125) colored shadow looks like.

```
.boxshadow{ -moz-box-shadow:4px 4px 4px  
4px rgb(202, 157, 125); -webkit-box-  
shadow:4px 4px 4px 4px rgb(202, 157, 125);  
box-shadow:4px 4px 4px 4px rgb(202, 157,  
125) }
```

Background

The CSS property to change the background color of an element to CIELCh 68, 26.278, 61.799 is called "background". The background property can be set on classes, ids or directly on the HTML element.

```
.background, #background, body{  
background: rgb(202, 157, 125) }
```

If only the background color should be changed can be used:

```
.background{ background-color: rgb(202,  
157, 125) }
```

This example shows the color as background, it is applied via the CSS property "background".

To optimize and compress your CSS code, you can use our [online CSS compressor and optimizer](#) based on csstidy. If you want to create a linear or radial gradient as background or border, check our [CSS Gradient Generator](#).

Hey! You found this booklet interesting? Support Converting Colors with the new Membership Option!

The pro membership hides all ads, plus gives you double the colors in the color bucket, and more awesome pro features!

[Learn more, Memberships starting at \\$2.50/m!](#)

**Follow me
on Twitter!**

@ConvertingColor