

Converting Colors

CIELCh(68, 27.925, 70.415)

Have a look what the booklet for
CIELCh(68, 27.925, 70.415) contains.

CIELCh(68, 27.708, 69.817)	3
<i>Conversions</i>	4
<i>Details</i>	6
<i>Harmonies</i>	11
<i>Previews</i>	20
<i>Color Blindness Simulation</i>	23
<i>CSS Examples</i>	26

Color

CIELCh(68, 27.708, 69.817)

Conversions

Conversions Part 1

Format	Color
Hex	C69E77
RGB	198, 158, 119
RGB Percent	78%, 62%, 47%
CMY	0.2220, 0.3790, 0.5320
CMYK	0.00, 0.20, 0.40, 0.22
HSL	30°, 41%, 62%
HSV	30°, 40%, 78%
XYZ	39.0262, 37.9720, 22.8323
YIQ	165.5140, 36.3590, -3.6490

Conversions

Conversions Part 2

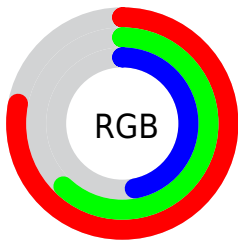
Format	Color
RYB	198, 196, 119
Decimal	13016695
CIELab	68.00, 9.56, 26.01
CIELCh	68, 27.708, 69.817
Yxy	37.9720, 0.3909, 0.3804
Android (android.graphics.Color)	4291206775 (0xFFC69E77)
YUV	165.5140, -22.9314, 28.4902
Hunter-Lab	61.6215, 5.2104, 21.1666

Details

The CIELCh color **68, 27.708, 69.817** is a light color, and the websafe version is hex **CC9966**. A complement of this color would be **64, 24.629, 261.528**, and the grayscale version is **68, 0.008, 296.813**.

A 20% lighter version of the original color is **88, 27.305, 70.702**, and **48, 27.618, 70.633** is the 20% darker color. If you saturate the color by 10%, you get **65, 35.477, 68.570**, and if you desaturate by 10%, it is **71, 20.258, 71.065**.

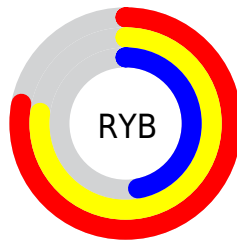
Distribution



Red (78%)

Green (62%)

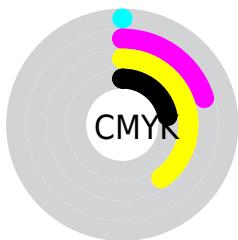
Blue (47%)



Red (78%)

Yellow (77%)

Blue (47%)

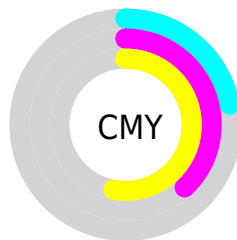


Cyan (0%)

Magenta (20%)

Yellow (40%)

Black (22%)



Cyan (22%)

Magenta (38%)

Yellow (53%)

Brightness & Saturation Gradients

These gradients show how the CIELCh color 68, 27.708, 69.817 changes by changing the brightness by 10 percent. The first figure shows a shift by +10% for each color and the second figure -10%.

Similar to the brightness gradients but the following saturation gradients show a change of the CIELCh color 68, 27.708, 69.817 by changing the saturation by 10% instead.

■ 68, 27.708, 69.817

■ 68, 27.708, 69.817

■ 100, 27.708,
69.817

■ 58, 27.708, 69.817

■ 88, 27.708, 69.817

■ 48, 27.708, 69.817

■ 98, 27.708, 69.817

■ 38, 27.708, 69.817

■ 28, 27.708, 69.817

■ 18, 27.708, 69.817

■ 8, 27.708, 69.817

■ 0, 27.708, 69.817

■ 68, 27.708, 69.817

■ 68, 27.708, 69.817

■ 65, 35.477, 68.570

■ 71, 20.258, 71.065

62, 43.488, 67.292

74, 13.147, 72.293

60, 51.545, 65.941

77, 6.366, 73.488

57, 59.240, 64.401

80, 0.108, 258.200

55, 65.819, 62.433

83, 6.302, 255.984

53, 70.739, 59.909

86, 12.247,
257.096

53, 70.819, 59.874

89, 16.645,
254.734

92, 15.444,
231.924

95, 16.747,
209.531

Harmonies

Complementary

The Complementary color scheme is a pair of colors which are on the opposite of each other on the color wheel.



68, 27.708, 69.817



64, 24.629, 261.528

Rectangle

The Rectangle color scheme consists of four colors that form a rectangle on the color wheel.



68, 27.708, 69.817



68, 27.708, 119.817



68, 27.708, 249.817



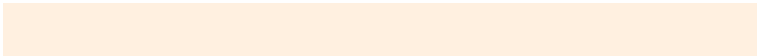
68, 27.708, 299.817

Sweetspot

The Sweet Spot groups the original color and five complimentary colors.



68, 27.708, 69.823



95, 9.571, 73.215



60, 37.446, 346.619



50, 6.369, 73.058



0, 0.000, 0.000



53, 0.007, 296.813

Same Dimension

The Same Dimension uses a secret algorithm to generate beautiful new colors.



68, 27.708, 69.823



82, 41.785, 68.712



78, 40.606, 105.635



40, 3.672, 73.541



44, 61.086, 60.456



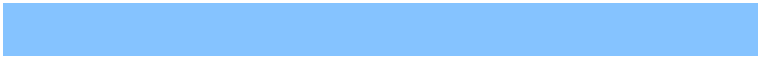
7, 12.951, 56.700

Inverse Universe

The Inverse Universe completely reimagines the original color for something new.



64, 24.629, 261.528



77, 36.082, 263.788



54, 44.846, 294.879



40, 3.590, 255.998



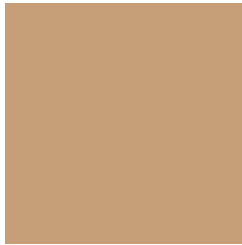
36, 50.598, 282.978



5, 13.917, 269.755

Previews

White Background



This preview shows how the CIELCh color 68, 27.708, 69.817 looks on a white background.

Color Contrast Check

Large Text (above 18pt) WCAG AA × Fail

Any Text WCAG AA × Fail

Large Text (above 18pt) WCAG AAA × Fail

Any Text WCAG AAA × Fail

Black Background



This preview shows how the CIELCh color 68, 27.708, 69.817 looks on a black background.

Color Contrast Check

Large Text (above 18pt) WCAG AA ✓ Pass

Any Text WCAG AA ✓ Pass

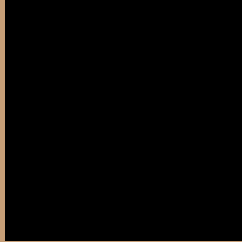
Large Text (above 18pt) WCAG AAA ✓ Pass

Any Text WCAG AAA ✓ Pass

If you want to check with other color combinations, try the [Color Contrast Checker](#).

CIELCh 68, 27.708, 69.817

Background



This preview shows how black text looks on a background with the CIELCh color 68, 27.708, 69.817.



This preview shows how white text looks on a background with the CIELCh color 68, 27.708, 69.817.

Color Blindness Simulation

Color vision deficiency is a very complex topic, and I could not describe the different causes any better than Wikipedia does, so if you want to learn more, you should check out their [article about color blindness](#).

Dichromacy



Original Color

68, 27.708, 69.817

Protanopia

68, 23.993, 95.661

Deuteranopia

68, 27.571, 71.805



Tritanopia
68, 20.923, 3.274

Trichromacy



Original Color
68, 27.708, 69.817

Protanomaly
68, 24.353, 85.439

Deuteranomaly
68, 27.843, 71.107

Tritanomaly
68, 19.391, 30.781

Monochromacy



Original Color
68, 27.708, 69.817

Achromatopsia
68, 0.008, 296.813

Achromatomaly
68, 9.737, 71.561

CSS Examples

Text

The CSS property to change the color of the text to CIELCh 68, 27.708, 69.817 is called "color". The color property can be set on classes, ids or directly on the HTML element.

This example shows how text in the color `rgb(198, 158, 119)` looks like.

```
.text, #text, p{  
    color:rgb(198, 158, 119)  
}
```

If you want to add a text shadow in that color use the text-shadow property, you can generate a text shadow directly with our [CSS Text Shadow Generator](#).

Here you see how black text with a 4 pixel rgb(198, 158, 119) colored shadow looks like.

```
.shadow{ text-shadow: 4px 4px 2px rgb(198, 158, 119) }
```

Border

The CSS property to change the border of an element to CIELCh 68, 27.708, 69.817 is called "border". The border property can be set on classes, ids or directly on the HTML element.

This example shows the color as border, it can be applied via the CSS property "border" or "border-color".

```
.border, #border, table{ border:4px solid rgb(198, 158, 119) }
```

If only the border color should be changed use the property `border-color`.

```
.border{ border-color:rgb(198, 158, 119) }
```

If you want to add a box shadow in that color use:

Here you see how a box with a 4 pixel `rgb(198, 158, 119)` colored shadow looks like.

```
.boxshadow{ -moz-box-shadow:4px 4px 4px  
4px rgb(198, 158, 119); -webkit-box-  
shadow:4px 4px 4px 4px rgb(198, 158, 119);  
box-shadow:4px 4px 4px 4px rgb(198, 158,  
119) }
```

Background

The CSS property to change the background color of an element to CIELCh 68, 27.708, 69.817 is called "background". The background property can be set on classes, ids or directly on the HTML element.

```
.background, #background, body{  
background: rgb(198, 158, 119) }
```

If only the background color should be changed can be used:

```
.background{ background-color: rgb(198,  
158, 119) }
```

This example shows the color as background, it is applied via the CSS property "background".

To optimize and compress your CSS code, you can use our [online CSS compressor and optimizer](#) based on csstidy. If you want to create a linear or radial gradient as background or border, check our [CSS Gradient Generator](#).

Hey! You found this booklet interesting? Support Converting Colors with the new Membership Option!

The pro membership hides all ads, plus gives you double the colors in the color bucket, and more awesome pro features!

[Learn more, Memberships starting at \\$2.50/m!](#)

**Follow me
on Twitter!**

@ConvertingColor