

Converting Colors

CIELCh(68, 34.067, 15.104)

Have a look what the booklet for
CIELCh(68, 34.067, 15.104) contains.

CIELCh(68, 34.101, 14.807)	3
<i>Conversions</i>	4
<i>Details</i>	6
<i>Harmonies</i>	11
<i>Previews</i>	20
<i>Color Blindness Simulation</i>	23
<i>CSS Examples</i>	26

Color

CIELCh(68, 34.101, 14.807)

Conversions

Conversions Part 1

Format	Color
Hex	E28E97
RGB	226, 142, 151
RGB Percent	89%, 56%, 59%
CMY	0.1118, 0.4414, 0.4061
CMYK	0.00, 0.37, 0.33, 0.11
HSL	354°, 60%, 72%
HSV	354°, 37%, 89%
XYZ	46.8752, 37.9720, 34.3214
YIQ	168.1420, 47.1750, 20.6070

Conversions

Conversions Part 2

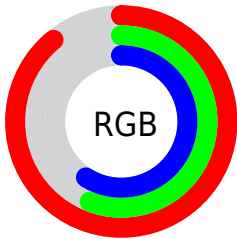
Format	Color
R _Y B	226, 142, 151
Decimal	14847639
CIE Lab	68.00, 32.97, 8.71
CIE LCh	68, 34.101, 14.807
Yxy	37.9720, 0.3934, 0.3186
Android (android.graphics.Color)	4293037719 (0xFFE28E97)
YUV	168.1420, -8.4510, 50.7415
Hunter-Lab	61.6215, 27.9468, 10.1122

Details

The CIELCh color **68, 34.101, 14.807** is a light color, and the websafe version is hex **FF9999**. A complement of this color would be **85, 27.738, 187.622**, and the grayscale version is **69, 0.009, 296.813**.

A 20% lighter version of the original color is **85, 22.183, 10.377**, and **48, 34.047, 14.749** is the 20% darker color. If you saturate the color by 10%, you get **63, 44.271, 16.692**, and if you desaturate by 10%, it is **74, 24.232, 13.318**.

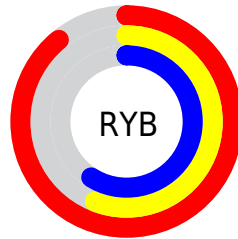
Distribution



Red (89%)

Green (56%)

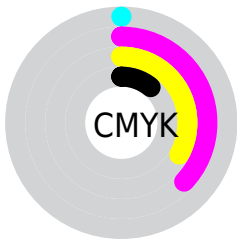
Blue (59%)



Red (89%)

Yellow (56%)

Blue (59%)

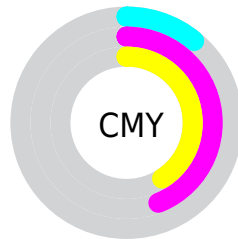


Cyan (0%)

Magenta (37%)

Yellow (33%)

Black (11%)



Cyan (11%)

Magenta (44%)

Yellow (41%)

Brightness & Saturation Gradients

These gradients show how the CIELCh color 68, 34.101, 14.807 changes by changing the brightness by 10 percent. The first figure shows a shift by +10% for each color and the second figure -10%.

Similar to the brightness gradients but the following saturation gradients show a change of the CIELCh color 68, 34.101, 14.807 by changing the saturation by 10% instead.

 68, 34.101, 14.807

 68, 34.101, 14.807

 100, 34.101,
14.807

 58, 34.101, 14.807

 88, 34.101, 14.807

 48, 34.101, 14.807

 98, 34.101, 14.807

 38, 34.101, 14.807

 28, 34.101, 14.807

 18, 34.101, 14.807

 8, 34.101, 14.807

 0, 34.101, 14.807

 68, 34.101, 14.807

 68, 34.101, 14.807

 63, 44.271, 16.692

 74, 24.232, 13.318

■ 58, 54.492, 19.087

■ 80, 14.829, 12.110

■ 54, 64.425, 22.133

■ 86, 5.964, 11.078

■ 51, 73.719, 25.918

■ 92, 2.345, 190.618

■ 49, 82.074, 30.360

■ 98, 9.830, 191.557

■ 48, 89.122, 34.958

■ 98, 9.684, 198.862

■ 47, 90.923, 36.086

Harmonies

Complementary

The Complementary color scheme is a pair of colors which are on the opposite of each other on the color wheel.



68, 34.101, 14.807



85, 27.738, 187.622

Rectangle

The Rectangle color scheme consists of four colors that form a rectangle on the color wheel.



68, 34.101, 14.807



68, 34.101, 64.807



68, 34.101, 194.807



68, 34.101, 244.807

Sweetspot

The Sweet Spot groups the original color and five complimentary colors.



68, 34.098, 14.811



93, 10.296, 11.477



69, 52.101, 322.987



48, 6.949, 11.616



0, 0.000, 0.000



53, 0.007, 296.813

Same Dimension

The Same Dimension uses a secret algorithm to generate beautiful new colors.



68, 34.098, 14.811



71, 46.394, 16.317



75, 27.950, 58.393



44, 4.766, 11.313



37, 74.615, 35.312



6, 25.338, 16.428

Inverse Universe

The Inverse Universe completely reimagines the original color for something new.



68, 34.098, 14.811



71, 46.394, 16.317



76, 23.237, 247.246



44, 4.766, 11.313



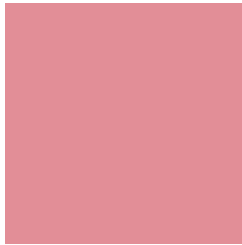
37, 74.615, 35.312



6, 25.338, 16.428

Previews

White Background



This preview shows how the CIELCh color 68, 34.101, 14.807 looks on a white background.

Color Contrast Check

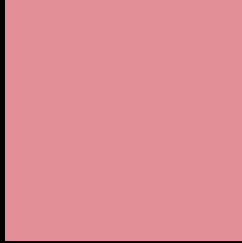
Large Text (above 18pt) WCAG AA × Fail

Any Text WCAG AA × Fail

Large Text (above 18pt) WCAG AAA × Fail

Any Text WCAG AAA × Fail

Black Background



This preview shows how the CIELCh color 68, 34.101, 14.807 looks on a black background.

Color Contrast Check

Large Text (above 18pt) WCAG AA ✓ Pass

Any Text WCAG AA ✓ Pass

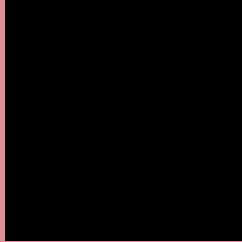
Large Text (above 18pt) WCAG AAA ✓ Pass

Any Text WCAG AAA ✓ Pass

If you want to check with other color combinations, try the [Color Contrast Checker](#).

CIELCh 68, 34.101, 14.807

Background



This preview shows how black text looks on a background with the CIELCh color 68, 34.101, 14.807.



This preview shows how white text looks on a background with the CIELCh color 68, 34.101, 14.807.

Color Blindness Simulation

Color vision deficiency is a very complex topic, and I could not describe the different causes any better than Wikipedia does, so if you want to learn more, you should check out their [article about color blindness](#).

Dichromacy



Original Color

68, 34.101, 14.807

Protanopia

68, 1.979, 35.421

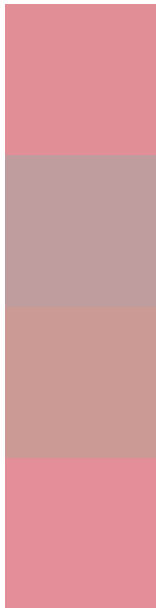
Deuteranopia

68, 13.458, 49.362



Tritanopia
68, 34.493, 13.155

Trichromacy



Original Color
68, 34.101, 14.807

Protanomaly
68, 13.407, 15.964

Deuteranomaly
68, 20.076, 28.961

Tritanomaly
68, 34.494, 14.053

Monochromacy



Original Color
68, 34.101, 14.807

Achromatopsia
69, 0.009, 296.813

Achromatomaly
68, 12.266, 10.273

CSS Examples

Text

The CSS property to change the color of the text to CIELCh 68, 34.101, 14.807 is called "color". The color property can be set on classes, ids or directly on the HTML element.

This example shows how text in the color `rgb(226, 142, 151)` looks like.

```
.text, #text, p{  
    color:rgb(226, 142, 151)  
}
```

If you want to add a text shadow in that color use the text-shadow property, you can generate a text shadow directly with our [CSS Text Shadow Generator](#).

Here you see how black text with a 4 pixel rgb(226, 142, 151) colored shadow looks like.

```
.shadow{ text-shadow: 4px 4px 2px rgb(226, 142, 151) }
```

Border

The CSS property to change the border of an element to CIELCh 68, 34.101, 14.807 is called "border". The border property can be set on classes, ids or directly on the HTML element.

This example shows the color as border, it can be applied via the CSS property "border" or "border-color".

```
.border, #border, table{ border:4px solid rgb(226, 142, 151) }
```

If only the border color should be changed use the property `border-color`.

```
.border{ border-color:rgb(226, 142, 151) }
```

If you want to add a box shadow in that color use:

Here you see how a box with a 4 pixel `rgb(226, 142, 151)` colored shadow looks like.

```
.boxshadow{ -moz-box-shadow:4px 4px 4px  
4px rgb(226, 142, 151); -webkit-box-  
shadow:4px 4px 4px 4px rgb(226, 142, 151);  
box-shadow:4px 4px 4px 4px rgb(226, 142,  
151) }
```

Background

The CSS property to change the background color of an element to CIELCh 68, 34.101, 14.807 is called "background". The background property can be set on classes, ids or directly on the HTML element.

```
.background, #background, body{  
background: rgb(226, 142, 151) }
```

If only the background color should be changed can be used:

```
.background{ background-color: rgb(226,  
142, 151) }
```

This example shows the color as background, it is applied via the CSS property "background".

To optimize and compress your CSS code, you can use our [online CSS compressor and optimizer](#) based on csstidy. If you want to create a linear or radial gradient as background or border, check our [CSS Gradient Generator](#).

Hey! You found this booklet interesting? Support Converting Colors with the new Membership Option!

The pro membership hides all ads, plus gives you double the colors in the color bucket, and more awesome pro features!

[Learn more, Memberships starting at \\$2.50/m!](#)

**Follow me
on Twitter!**

@ConvertingColor