

Converting Colors

CIELCh(68, 37.840, 15.292)

Have a look what the booklet for
CIELCh(68, 37.840, 15.292) contains.

CIELCh(68, 37.843, 15.293)	3
<i>Conversions</i>	4
<i>Details</i>	6
<i>Harmonies</i>	11
<i>Previews</i>	20
<i>Color Blindness Simulation</i>	23
<i>CSS Examples</i>	26

Color

CIELCh(68, 37.843, 15.293)

Conversions

Conversions Part 1

Format	Color
Hex	E88B95
RGB	232, 139, 149
RGB Percent	91%, 55%, 58%
CMY	0.0886, 0.4535, 0.4143
CMYK	0.00, 0.40, 0.36, 0.09
HSL	354°, 67%, 73%
HSV	354°, 40%, 91%
XYZ	48.1447, 37.9720, 33.3724
YIQ	167.9470, 52.2180, 22.8260

Conversions

Conversions Part 2

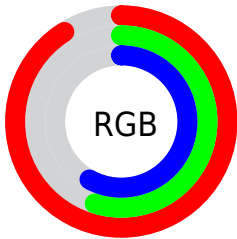
Format	Color
RYB	232, 139, 149
Decimal	15240085
CIELab	68.00, 36.50, 9.98
CIElCh	68, 37.843, 15.293
Yxy	37.9720, 0.4029, 0.3178
Android (android.graphics.Color)	4293430165 (0xFFE88B95)
YUV	167.9470, -9.3409, 56.1745
Hunter-Lab	61.6215, 31.6241, 11.0253

Details

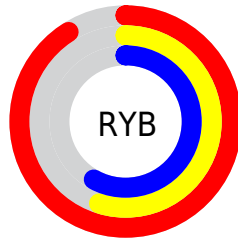
The CIELCh color **68, 37.843, 15.293** is a light color, and the websafe version is hex **FF9999**. A complement of this color would be **86, 30.220, 187.334**, and the grayscale version is **69, 0.009, 296.813**.

A 20% lighter version of the original color is **84, 23.441, 9.786**, and **48, 37.969, 15.660** is the 20% darker color. If you saturate the color by 10%, you get **63, 48.272, 17.321**, and if you desaturate by 10%, it is **74, 27.652, 13.697**.

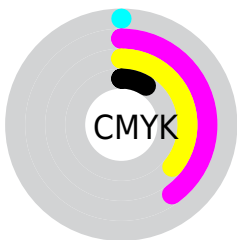
Distribution



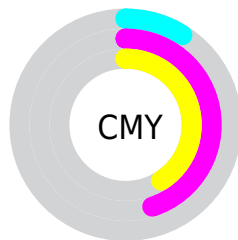
- Red (91%)
- Green (55%)
- Blue (58%)



- Red (91%)
- Yellow (55%)
- Blue (58%)



- Cyan (0%)
- Magenta (40%)
- Yellow (36%)
- Black (9%)



- Cyan (9%)
- Magenta (45%)
- Yellow (41%)

Brightness & Saturation Gradients

These gradients show how the CIELCh color 68, 37.843, 15.293 changes by changing the brightness by 10 percent. The first figure shows a shift by +10% for each color and the second figure -10%.

Similar to the brightness gradients but the following saturation gradients show a change of the CIELCh color 68, 37.843, 15.293 by changing the saturation by 10% instead.

68, 37.843, 15.293

68, 37.843, 15.293

100, 37.843,
15.293

58, 37.843, 15.293

88, 37.843, 15.293

48, 37.843, 15.293

98, 37.843, 15.293

38, 37.843, 15.293

28, 37.843, 15.293

18, 37.843, 15.293

8, 37.843, 15.293

0, 37.843, 15.293

68, 37.843, 15.293

68, 37.843, 15.293

63, 48.272, 17.321

74, 27.652, 13.697

■ 58, 58.657, 19.902

■ 80, 17.899, 12.412

■ 54, 68.634, 23.172

■ 86, 8.681, 11.343

■ 51, 77.858, 27.185

■ 92, 0.032, 351.387

■ 50, 86.029, 31.765

■ 98, 7.829, 191.772

■ 49, 92.759, 36.133

■ 98, 7.723, 199.003

Harmonies

Complementary

The Complementary color scheme is a pair of colors which are on the opposite of each other on the color wheel.



68, 37.843, 15.293



86, 30.220, 187.334

Rectangle

The Rectangle color scheme consists of four colors that form a rectangle on the color wheel.



68, 37.843, 15.293



68, 37.843, 65.293



68, 37.843, 195.293



68, 37.843, 245.293

Sweetspot

The Sweet Spot groups the original color and five complimentary colors.



68, 37.840, 15.296



92, 11.270, 11.549



69, 57.278, 323.115



48, 7.507, 11.684



0, 0.000, 0.000



53, 0.007, 296.813

Same Dimension

The Same Dimension uses a secret algorithm to generate beautiful new colors.



68, 37.840, 15.296



69, 49.775, 16.922



76, 31.106, 58.141



46, 4.944, 11.287



38, 76.281, 35.391



7, 28.130, 18.321

Inverse Universe

The Inverse Universe completely reimagines the original color for something new.



68, 37.840, 15.296



69, 49.775, 16.922



77, 25.419, 247.878



46, 4.944, 11.287



38, 76.281, 35.391



7, 28.130, 18.321

Previews

White Background



This preview shows how the CIELCh color 68, 37.843, 15.293 looks on a white background.

Color Contrast Check

Large Text (above 18pt) WCAG AA × Fail

Any Text WCAG AA × Fail

Large Text (above 18pt) WCAG AAA × Fail

Any Text WCAG AAA × Fail

Black Background



This preview shows how the CIELCh color 68, 37.843, 15.293 looks on a black background.

Color Contrast Check

Large Text (above 18pt) WCAG AA ✓ Pass

Any Text WCAG AA ✓ Pass

Large Text (above 18pt) WCAG AAA ✓ Pass

Any Text WCAG AAA ✓ Pass

If you want to check with other color combinations, try the [Color Contrast Checker](#).

CIELCh 68, 37.843, 15.293

Background



This preview shows how black text looks on a background with the CIELCh color 68, 37.843, 15.293.

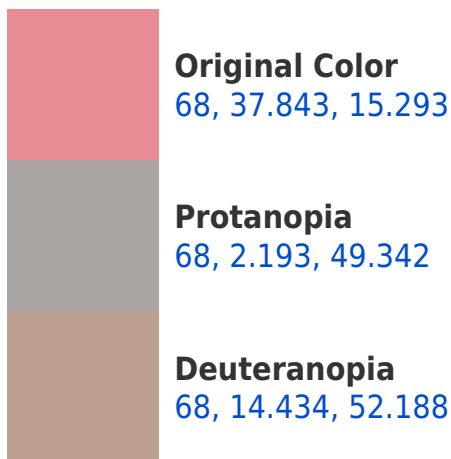


This preview shows how white text looks on a background with the CIELCh color 68, 37.843, 15.293.

Color Blindness Simulation

Color vision deficiency is a very complex topic, and I could not describe the different causes any better than Wikipedia does, so if you want to learn more, you should check out their [article about color blindness](#).

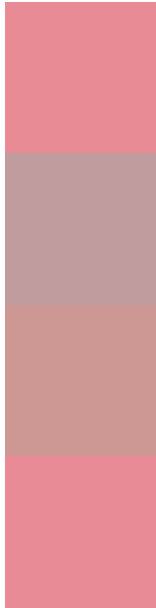
Dichromacy





Tritanopia
68, 37.823, 14.474

Trichromacy



Original Color
68, 37.843, 15.293

Protanomaly
68, 14.631, 16.484

Deuteranomaly
68, 21.791, 28.529

Tritanomaly
68, 37.823, 14.474

Monochromacy



Original Color
68, 37.843, 15.293

Achromatopsia
69, 0.009, 296.813

Achromatomaly
68, 13.016, 13.373

CSS Examples

Text

The CSS property to change the color of the text to CIELCh 68, 37.843, 15.293 is called "color". The color property can be set on classes, ids or directly on the HTML element.

This example shows how text in the color `rgb(232, 139, 149)` looks like.

```
.text, #text, p{  
    color:rgb(232, 139, 149)  
}
```

If you want to add a text shadow in that color use the text-shadow property, you can generate a text shadow directly with our [CSS Text Shadow Generator](#).

Here you see how black text with a 4 pixel rgb(232, 139, 149) colored shadow looks like.

```
.shadow{ text-shadow: 4px 4px 2px rgb(232, 139, 149) }
```

Border

The CSS property to change the border of an element to CIELCh 68, 37.843, 15.293 is called "border". The border property can be set on classes, ids or directly on the HTML element.

This example shows the color as border, it can be applied via the CSS property "border" or "border-color".

```
.border, #border, table{ border:4px solid rgb(232, 139, 149) }
```

If only the border color should be changed use the property `border-color`.

```
.border{ border-color:rgb(232, 139, 149) }
```

If you want to add a box shadow in that color use:

Here you see how a box with a 4 pixel `rgb(232, 139, 149)` colored shadow looks like.

```
.boxshadow{ -moz-box-shadow:4px 4px 4px  
4px rgb(232, 139, 149); -webkit-box-  
shadow:4px 4px 4px 4px rgb(232, 139, 149);  
box-shadow:4px 4px 4px 4px rgb(232, 139,  
149) }
```

Background

The CSS property to change the background color of an element to CIELCh 68, 37.843, 15.293 is called "background". The background property can be set on classes, ids or directly on the HTML element.

```
.background, #background, body{  
background: rgb(232, 139, 149) }
```

If only the background color should be changed can be used:

```
.background{ background-color: rgb(232,  
139, 149) }
```

This example shows the color as background, it is applied via the CSS property "background".

To optimize and compress your CSS code, you can use our [online CSS compressor and optimizer](#) based on csstidy. If you want to create a linear or radial gradient as background or border, check our [CSS Gradient Generator](#).

Hey! You found this booklet interesting? Support Converting Colors with the new Membership Option!

The pro membership hides all ads, plus gives you double the colors in the color bucket, and more awesome pro features!

[Learn more, Memberships starting at \\$2.50/m!](#)

**Follow me
on Twitter!**

@ConvertingColor