

Converting Colors

CIELCh(68, 40.875, 0.195)

Have a look what the booklet for
CIELCh(68, 40.875, 0.195) contains.

CIELCh(68, 41.037, 0.006)	3
<i>Conversions</i>	4
<i>Details</i>	6
<i>Harmonies</i>	11
<i>Previews</i>	20
<i>Color Blindness Simulation</i>	23
<i>CSS Examples</i>	26

Color

CIELCh(68, 41.037, 0.006)

Conversions

Conversions Part 1

Format	Color
Hex	EA88A7
RGB	234, 136, 167
RGB Percent	92%, 53%, 65%
CMY	0.0817, 0.4660, 0.3445
CMYK	0.00, 0.42, 0.29, 0.08
HSL	341°, 70%, 73%
HSV	341°, 42%, 92%
XYZ	49.8065, 37.9720, 41.3414
YIQ	168.8360, 48.4570, 30.4170

Conversions

Conversions Part 2

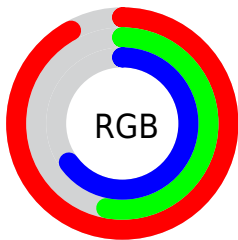
Format	Color
R_{YB}	234, 136, 167
Decimal	15370407
CIE _{Lab}	68.00, 41.04, 0.00
CIE _{LCh}	68, 41.037, 0.006
Yxy	37.9720, 0.3857, 0.2941
Android (android.graphics.Color)	4293560487 (0xFFEA88A7)
YUV	168.8360, -0.9051, 57.1488
Hunter-Lab	61.6215, 36.4379, 3.3578

Details

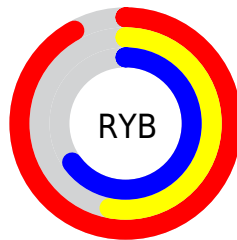
The CIELCh color $68, 41.037, 0.006$ is a light color, and the websafe version is hex `FF99CC`. A complement of this color would be $86, 36.449, 170.442$, and the grayscale version is $69, 0.009, 296.813$.

A 20% lighter version of the original color is $84, 28.328, 346.830$, and $48, 40.832, 0.315$ is the 20% darker color. If you saturate the color by 10%, you get $63, 50.803, 1.944$, and if you desaturate by 10%, it is $74, 30.982, 358.423$.

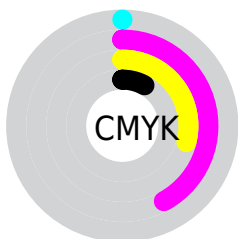
Distribution



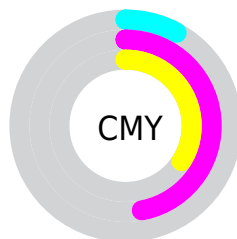
- Red (92%)
- Green (53%)
- Blue (65%)



- Red (92%)
- Yellow (53%)
- Blue (65%)



- Cyan (0%)
- Magenta (42%)
- Yellow (29%)
- Black (8%)



- Cyan (8%)
- Magenta (47%)
- Yellow (34%)

Brightness & Saturation Gradients

These gradients show how the CIELCh color 68, 41.037, 0.006 changes by changing the brightness by 10 percent. The first figure shows a shift by +10% for each color and the second figure -10%.

Similar to the brightness gradients but the following saturation gradients show a change of the CIELCh color 68, 41.037, 0.006 by changing the saturation by 10% instead.

 68, 41.037, 0.006  68, 41.037, 0.006

 100, 41.037, 0.006  58, 41.037, 0.006

 88, 41.037, 0.006  48, 41.037, 0.006

 98, 41.037, 0.006  38, 41.037, 0.006

 28, 41.037, 0.006

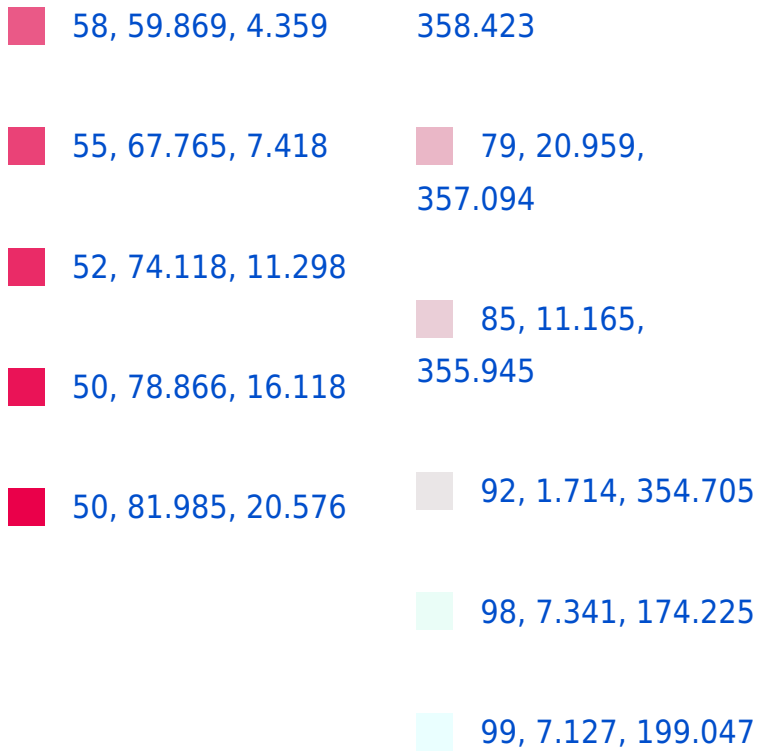
 18, 41.037, 0.006

 8, 41.037, 0.006

 0, 41.037, 0.006

 68, 41.037, 0.006  68, 41.037, 0.006

 63, 50.803, 1.944  74, 30.982,



Harmonies

Complementary

The Complementary color scheme is a pair of colors which are on the opposite of each other on the color wheel.



68, 41.037, 0.006



86, 36.449, 170.442

Rectangle

The Rectangle color scheme consists of four colors that form a rectangle on the color wheel.



68, 41.037, 0.006



68, 41.037, 50.006



68, 41.037, 180.006



68, 41.037, 230.006

Sweetspot

The Sweet Spot groups the original color and five complimentary colors.



68, 41.034, 0.008



91, 13.152, 356.077



67, 58.042, 316.999



47, 9.241, 356.323



0, 0.000, 0.000



53, 0.007, 296.813

Same Dimension

The Same Dimension uses a secret algorithm to generate beautiful new colors.



68, 41.034, 0.008



69, 52.534, 1.601



71, 35.376, 37.982



46, 5.334, 355.688



38, 67.274, 19.540



7, 27.801, 8.405

Inverse Universe

The Inverse Universe completely reimagines the original color for something new.



68, 41.034, 0.008



69, 52.534, 1.601



82, 25.916, 219.615



46, 5.334, 355.688



38, 67.274, 19.540



7, 27.801, 8.405

Previews

White Background



This preview shows how the CIELCh color 68, 41.037, 0.006 looks on a white background.

Color Contrast Check

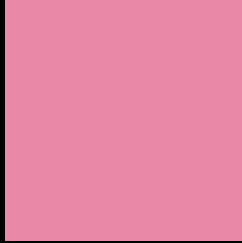
Large Text (above 18pt) WCAG AA × Fail

Any Text WCAG AA × Fail

Large Text (above 18pt) WCAG AAA × Fail

Any Text WCAG AAA × Fail

Black Background



This preview shows how the CIE LCh color 68, 41.037, 0.006 looks on a black background.

Color Contrast Check

Large Text (above 18pt) WCAG AA ✓ Pass

Any Text WCAG AA ✓ Pass

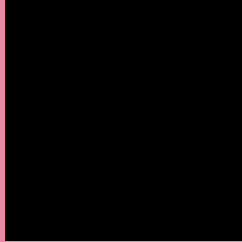
Large Text (above 18pt) WCAG AAA ✓ Pass

Any Text WCAG AAA ✓ Pass

If you want to check with other color combinations, try the [Color Contrast Checker](#).

CIELCh 68, 41.037, 0.006

Background



This preview shows how black text looks on a background with the CIELCh color 68, 41.037, 0.006.



This preview shows how white text looks on a background with the CIELCh color 68, 41.037, 0.006.

Color Blindness Simulation

Color vision deficiency is a very complex topic, and I could not describe the different causes any better than Wikipedia does, so if you want to learn more, you should check out their [article about color blindness](#).

Dichromacy



Original Color
68, 41.037, 0.006

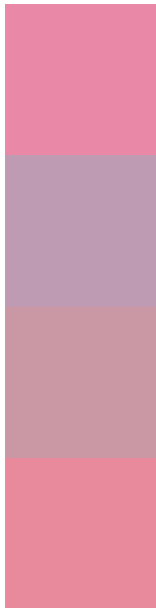
Protanopia
68, 10.469, 289.272

Deuteranopia
68, 8.596, 12.834



Tritanopia
68, 37.823, 14.474

Trichromacy



Original Color
68, 41.037, 0.006

Protanomaly
68, 18.276, 337.396

Deuteranomaly
68, 20.683, 1.418

Tritanomaly
68, 38.735, 9.185

Monochromacy



Original Color
68, 41.037, 0.006

Achromatopsia
69, 0.009, 296.813

Achromatomaly
68, 15.125, 357.423

CSS Examples

Text

The CSS property to change the color of the text to CIELCh 68, 41.037, 0.006 is called "color". The color property can be set on classes, ids or directly on the HTML element.

This example shows how text in the color `rgb(234, 136, 167)` looks like.

```
.text, #text, p{  
    color:rgb(234, 136, 167)  
}
```

If you want to add a text shadow in that color use the text-shadow property, you can generate a text shadow directly with our [CSS Text Shadow Generator](#).

Here you see how black text with a 4 pixel rgb(234, 136, 167) colored shadow looks like.

```
.shadow{ text-shadow: 4px 4px 2px rgb(234, 136, 167) }
```

Border

The CSS property to change the border of an element to CIELCh 68, 41.037, 0.006 is called "border". The border property can be set on classes, ids or directly on the HTML element.

This example shows the color as border, it can be applied via the CSS property "border" or "border-color".

```
.border, #border, table{ border:4px solid rgb(234, 136, 167) }
```

If only the border color should be changed use the property `border-color`.

```
.border{ border-color:rgb(234, 136, 167) }
```

If you want to add a box shadow in that color use:

Here you see how a box with a 4 pixel `rgb(234, 136, 167)` colored shadow looks like.

```
.boxshadow{ -moz-box-shadow:4px 4px 4px  
4px rgb(234, 136, 167); -webkit-box-  
shadow:4px 4px 4px 4px rgb(234, 136, 167);  
box-shadow:4px 4px 4px 4px rgb(234, 136,  
167) }
```

Background

The CSS property to change the background color of an element to CIELCh 68, 41.037, 0.006 is called "background". The background property can be set on classes, ids or directly on the HTML element.

```
.background, #background, body{  
background: rgb(234, 136, 167) }
```

If only the background color should be changed can be used:

```
.background{ background-color: rgb(234,  
136, 167) }
```

This example shows the color as background, it is applied via the CSS property "background".

To optimize and compress your CSS code, you can use our [online CSS compressor and optimizer](#) based on csstidy. If you want to create a linear or radial gradient as background or border, check our [CSS Gradient Generator](#).

Hey! You found this booklet interesting? Support Converting Colors with the new Membership Option!

The pro membership hides all ads, plus gives you double the colors in the color bucket, and more awesome pro features!

[Learn more, Memberships starting at \\$2.50/m!](#)

**Follow me
on Twitter!**

@ConvertingColor