

Converting Colors

CIELCh(68, 41.154, 63.440)

Have a look what the booklet for
CIELCh(68, 41.154, 63.440) contains.

CIELCh(68, 41.059, 63.538)	3
<i>Conversions</i>	4
<i>Details</i>	6
<i>Harmonies</i>	11
<i>Previews</i>	20
<i>Color Blindness Simulation</i>	23
<i>CSS Examples</i>	26

Color

CIELCh(68, 41.059, 63.538)

Conversions

Conversions Part 1

Format	Color
Hex	D89864
RGB	216, 152, 100
RGB Percent	85%, 60%, 39%
CMY	0.1530, 0.4039, 0.6079
CMYK	0.00, 0.30, 0.54, 0.15
HSL	27°, 60%, 62%
HSV	27°, 54%, 85%
XYZ	41.8437, 37.9720, 17.1787
YIQ	165.2080, 54.8360, -2.6040

Conversions

Conversions Part 2

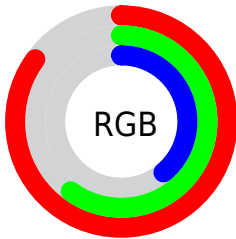
Format	Color
R _Y B	216, 194, 100
Decimal	14194788
CIE Lab	68.00, 18.30, 36.76
CIE LCh	68, 41.059, 63.538
Yxy	37.9720, 0.4314, 0.3915
Android (android.graphics.Color)	4292384868 (0xFFD89864)
YUV	165.2080, -32.1475, 44.5446
Hunter-Lab	61.6215, 13.3719, 26.6063

Details

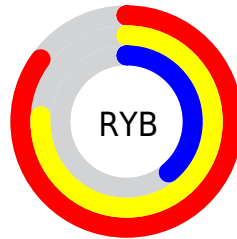
The CIELCh color **68, 41.059, 63.538** is a light color, and the websafe version is hex **CC9966**. A complement of this color would be **65, 33.193, 259.903**, and the grayscale version is **68, 0.008, 296.813**.

A 20% lighter version of the original color is **86, 34.962, 72.768**, and **48, 40.882, 63.512** is the 20% darker color. If you saturate the color by 10%, you get **65, 49.893, 62.420**, and if you desaturate by 10%, it is **71, 32.516, 64.651**.

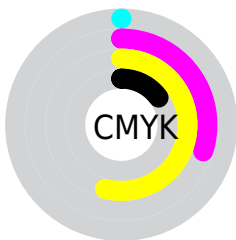
Distribution



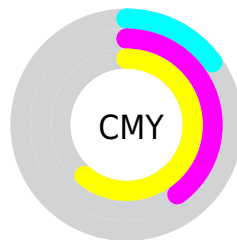
- Red (85%)
- Green (60%)
- Blue (39%)



- Red (85%)
- Yellow (76%)
- Blue (39%)



- Cyan (0%)
- Magenta (30%)
- Yellow (54%)
- Black (15%)



- Cyan (15%)
- Magenta (40%)
- Yellow (61%)

Brightness & Saturation Gradients

These gradients show how the CIELCh color 68, 41.059, 63.538 changes by changing the brightness by 10 percent. The first figure shows a shift by +10% for each color and the second figure -10%.

Similar to the brightness gradients but the following saturation gradients show a change of the CIELCh color 68, 41.059, 63.538 by changing the saturation by 10% instead.

68, 41.059, 63.538

68, 41.059, 63.538

100, 41.059,
63.538

58, 41.059, 63.538

88, 41.059, 63.538

48, 41.059, 63.538

98, 41.059, 63.538

38, 41.059, 63.538

28, 41.059, 63.538

18, 41.059, 63.538

8, 41.059, 63.538

0, 41.059, 63.538

68, 41.059, 63.538

68, 41.059, 63.538

65, 49.893, 62.420

71, 32.516, 64.651

62, 58.753, 61.210

75, 24.375, 65.769

59, 67.070, 59.742

78, 16.662, 66.897

57, 73.835, 57.678

81, 9.367, 68.019

55, 77.214, 56.117

85, 2.460, 69.029

89, 4.094, 250.437

92, 10.334,
251.479

95, 11.129,
219.643

97, 13.095,
198.631

Harmonies

Complementary

The Complementary color scheme is a pair of colors which are on the opposite of each other on the color wheel.



68, 41.059, 63.538



65, 33.193, 259.903

Rectangle

The Rectangle color scheme consists of four colors that form a rectangle on the color wheel.



68, 41.059, 63.538



68, 41.059, 113.538



68, 41.059, 243.538



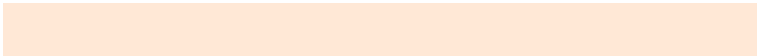
68, 41.059, 293.538

Sweetspot

The Sweet Spot groups the original color and five complimentary colors.



68, 41.058, 63.542



94, 12.598, 67.747



58, 54.600, 345.582



49, 8.555, 67.514



0, 0.000, 0.000



53, 0.007, 296.813

Same Dimension

The Same Dimension uses a secret algorithm to generate beautiful new colors.



68, 41.058, 63.542



75, 57.462, 62.316



82, 55.059, 101.872



43, 3.807, 68.487



44, 64.548, 56.773



9, 17.130, 53.138

Inverse Universe

The Inverse Universe completely reimagines the original color for something new.



65, 33.193, 259.903



71, 44.415, 263.488



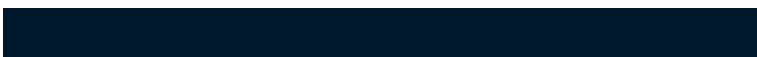
50, 63.028, 295.819



43, 3.695, 250.846



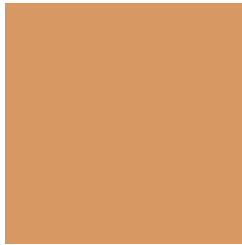
40, 47.915, 278.208



7, 15.930, 267.282

Previews

White Background



This preview shows how the CIELCh color 68, 41.059, 63.538 looks on a white background.

Color Contrast Check

Large Text (above 18pt) WCAG AA × Fail

Any Text WCAG AA × Fail

Large Text (above 18pt) WCAG AAA × Fail

Any Text WCAG AAA × Fail

Black Background



This preview shows how the CIELCh color 68, 41.059, 63.538 looks on a black background.

Color Contrast Check

Large Text (above 18pt) WCAG AA ✓ Pass

Any Text WCAG AA ✓ Pass

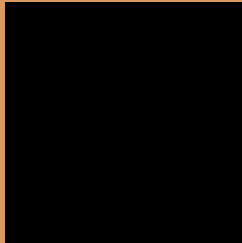
Large Text (above 18pt) WCAG AAA ✓ Pass

Any Text WCAG AAA ✓ Pass

If you want to check with other color combinations, try the [Color Contrast Checker](#).

CIELCh 68, 41.059, 63.538

Background



This preview shows how black text looks on a background with the CIELCh color 68, 41.059, 63.538.



This preview shows how white text looks on a background with the CIELCh color 68, 41.059, 63.538.

Color Blindness Simulation

Color vision deficiency is a very complex topic, and I could not describe the different causes any better than Wikipedia does, so if you want to learn more, you should check out their [article about color blindness](#).

Dichromacy





Tritanopia
68, 30.393, 11.276

Trichromacy



Original Color
68, 41.059, 63.538

Protanomaly
68, 34.951, 82.493

Deuteranomaly
68, 39.035, 71.603

Tritanomaly
68, 30.622, 34.290

Monochromacy



Original Color
68, 41.059, 63.538

Achromatopsia
68, 0.008, 296.813

Achromatomaly
67, 14.363, 66.246

CSS Examples

Text

The CSS property to change the color of the text to CIELCh 68, 41.059, 63.538 is called "color". The color property can be set on classes, ids or directly on the HTML element.

This example shows how text in the color `rgb(216, 152, 100)` looks like.

```
.text, #text, p{  
    color:rgb(216, 152, 100)  
}
```

If you want to add a text shadow in that color use the text-shadow property, you can generate a text shadow directly with our [CSS Text Shadow Generator](#).

Here you see how black text with a 4 pixel rgb(216, 152, 100) colored shadow looks like.

```
.shadow{ text-shadow: 4px 4px 2px rgb(216, 152, 100) }
```

Border

The CSS property to change the border of an element to CIELCh 68, 41.059, 63.538 is called "border". The border property can be set on classes, ids or directly on the HTML element.

This example shows the color as border, it can be applied via the CSS property "border" or "border-color".

```
.border, #border, table{ border:4px solid rgb(216, 152, 100) }
```

If only the border color should be changed use the property `border-color`.

```
.border{ border-color:rgb(216, 152, 100) }
```

If you want to add a box shadow in that color use:

Here you see how a box with a 4 pixel `rgb(216, 152, 100)` colored shadow looks like.

```
.boxshadow{ -moz-box-shadow:4px 4px 4px  
4px rgb(216, 152, 100); -webkit-box-  
shadow:4px 4px 4px 4px rgb(216, 152, 100);  
box-shadow:4px 4px 4px 4px rgb(216, 152,  
100) }
```

Background

The CSS property to change the background color of an element to CIELCh 68, 41.059, 63.538 is called "background". The background property can be set on classes, ids or directly on the HTML element.

```
.background, #background, body{  
background: rgb(216, 152, 100) }
```

If only the background color should be changed can be used:

```
.background{ background-color: rgb(216,  
152, 100) }
```

This example shows the color as background, it is applied via the CSS property "background".

To optimize and compress your CSS code, you can use our [online CSS compressor and optimizer](#) based on csstidy. If you want to create a linear or radial gradient as background or border, check our [CSS Gradient Generator](#).

Hey! You found this booklet interesting? Support Converting Colors with the new Membership Option!

The pro membership hides all ads, plus gives you double the colors in the color bucket, and more awesome pro features!

[Learn more, Memberships starting at \\$2.50/m!](#)

**Follow me
on Twitter!**

@ConvertingColor