

Converting Colors

CIELCh(68, 54.209, 0.455)

Have a look what the booklet for
CIELCh(68, 54.209, 0.455) contains.

CIELCh(68, 54.241, 0.495)	3
<i>Conversions</i>	4
<i>Details</i>	6
<i>Harmonies</i>	11
<i>Previews</i>	20
<i>Color Blindness Simulation</i>	23
<i>CSS Examples</i>	26

Color

CIELCh(68, 54.241, 0.495)

Conversions

Conversions Part 1

Format	Color
Hex	FE7BA7
RGB	254, 123, 167
RGB Percent	100%, 48%, 65%
CMY	0.0044, 0.5181, 0.3455
CMYK	0.00, 0.52, 0.34, 0.00
HSL	340°, 98%, 74%
HSV	340°, 52%, 100%
XYZ	54.8621, 37.9720, 40.9451
YIQ	167.1850, 63.9520, 41.4560

Conversions

Conversions Part 2

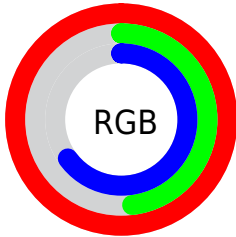
Format	Color
RYB	254, 123, 167
Decimal	16677799
CIELab	68.00, 54.24, 0.47
CIELCh	68, 54.241, 0.495
Yxy	37.9720, 0.4101, 0.2838
Android (android.graphics.Color)	4294867879 (0xFFFE7BA7)
YUV	167.1850, -0.0912, 76.1368
Hunter-Lab	61.6215, 51.0825, 3.7391

Details

The CIELCh color $68, 54.241, 0.495$ is a light color, and the websafe version is hex `FF6699`. A complement of this color would be $92, 47.475, 167.763$, and the grayscale version is $69, 0.008, 296.813$.

A 20% lighter version of the original color is $81, 35.453, 342.856$, and $48, 54.223, 0.665$ is the 20% darker color. If you saturate the color by 10%, you get $63, 63.849, 2.860$, and if you desaturate by 10%, it is $73, 43.822, 358.599$.

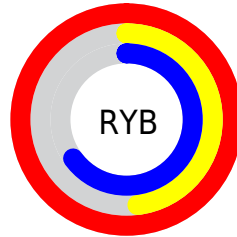
Distribution



Red (100%)

Green (48%)

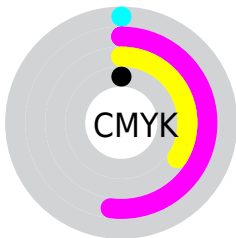
Blue (65%)



Red (100%)

Yellow (48%)

Blue (65%)

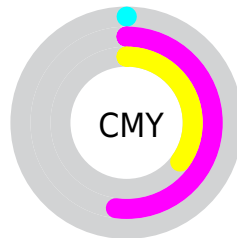


Cyan (0%)

Magenta (52%)

Yellow (34%)

Black (0%)



Cyan (0%)

Magenta (52%)

Yellow (35%)

Brightness & Saturation Gradients

These gradients show how the CIELCh color 68, 54.241, 0.495 changes by changing the brightness by 10 percent. The first figure shows a shift by +10% for each color and the second figure -10%.

Similar to the brightness gradients but the following saturation gradients show a change of the CIELCh color 68, 54.241, 0.495 by changing the saturation by 10% instead.

 68, 54.241, 0.495  68, 54.241, 0.495

 100, 54.241, 0.495  58, 54.241, 0.495

 88, 54.241, 0.495  48, 54.241, 0.495

 98, 54.241, 0.495  38, 54.241, 0.495

 28, 54.241, 0.495

 18, 54.241, 0.495

 8, 54.241, 0.495

 0, 54.241, 0.495

 68, 54.241, 0.495  68, 54.241, 0.495

 63, 63.849, 2.860  73, 43.822,

■ 59, 72.140, 5.853 358.599

■ 56, 78.695, 9.658 ■ 79, 33.064,
357.041

■ 55, 83.441, 14.411

■ 54, 86.501, 19.015 ■ 85, 22.306,
355.729

■ 92, 11.773,
354.591

■ 99, 1.590, 353.316

■ 100, 0.390,
201.079

Harmonies

Complementary

The Complementary color scheme is a pair of colors which are on the opposite of each other on the color wheel.



68, 54.241, 0.495



92, 47.475, 167.763

Rectangle

The Rectangle color scheme consists of four colors that form a rectangle on the color wheel.



68, 54.241, 0.495



68, 54.241, 50.495



68, 54.241, 180.495



68, 54.241, 230.495

Sweetspot

The Sweet Spot groups the original color and five complimentary colors.



68, 54.238, 0.497



90, 15.383, 354.965



66, 75.804, 316.332



47, 10.534, 355.203



0, 0.000, 0.000



53, 0.007, 296.813

Same Dimension

The Same Dimension uses a secret algorithm to generate beautiful new colors.



68, 54.238, 0.497



63, 64.446, 2.973



71, 49.505, 35.889



50, 5.772, 354.367



40, 69.586, 17.952



10, 31.340, 10.106

Inverse Universe

The Inverse Universe completely reimagines the original color for something new.



68, 54.238, 0.497



63, 64.446, 2.973



87, 32.946, 215.866



50, 5.772, 354.367



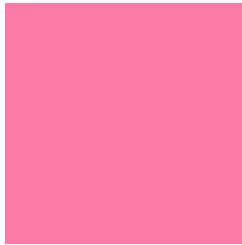
40, 69.586, 17.952



10, 31.340, 10.106

Previews

White Background



This preview shows how the CIELCh color 68, 54.241, 0.495 looks on a white background.

Color Contrast Check

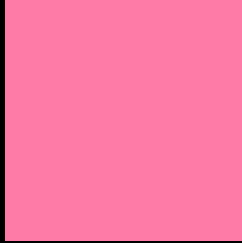
Large Text (above 18pt) WCAG AA × Fail

Any Text WCAG AA × Fail

Large Text (above 18pt) WCAG AAA × Fail

Any Text WCAG AAA × Fail

Black Background



This preview shows how the CIE LCh color 68, 54.241, 0.495 looks on a black background.

Color Contrast Check

Large Text (above 18pt) WCAG AA ✓ Pass

Any Text WCAG AA ✓ Pass

Large Text (above 18pt) WCAG AAA ✓ Pass

Any Text WCAG AAA ✓ Pass

If you want to check with other color combinations, try the [Color Contrast Checker](#).

CIELCh 68, 54.241, 0.495

Background



This preview shows how black text looks on a background with the CIELCh color 68, 54.241, 0.495.



This preview shows how white text looks on a background with the CIELCh color 68, 54.241, 0.495.

Color Blindness Simulation

Color vision deficiency is a very complex topic, and I could not describe the different causes any better than Wikipedia does, so if you want to learn more, you should check out their [article about color blindness](#).

Dichromacy



Original Color

68, 54.241, 0.495

Protanopia

68, 14.909, 286.275

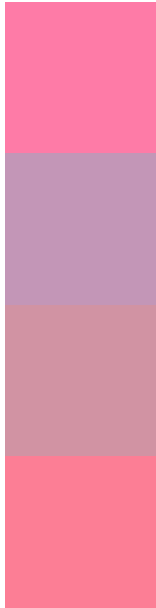
Deuteranopia

68, 8.959, 20.166



Tritanopia
68, 50.487, 19.092

Trichromacy



Original Color
68, 54.241, 0.495

Protanomaly
67, 24.702, 334.529

Deuteranomaly
67, 25.693, 2.236

Tritanomaly
68, 51.198, 11.653

Monochromacy



Original Color
68, 54.241, 0.495

Achromatopsia
68, 0.008, 296.813

Achromatomaly
67, 20.491, 356.174

CSS Examples

Text

The CSS property to change the color of the text to CIELCh 68, 54.241, 0.495 is called "color". The color property can be set on classes, ids or directly on the HTML element.

This example shows how text in the color `rgb(254, 123, 167)` looks like.

```
.text, #text, p{  
    color:rgb(254, 123, 167)  
}
```

If you want to add a text shadow in that color use the text-shadow property, you can generate a text shadow directly with our [CSS Text Shadow Generator](#).

Here you see how black text with a 4 pixel rgb(254, 123, 167) colored shadow looks like.

```
.shadow{ text-shadow: 4px 4px 2px rgb(254, 123, 167) }
```

Border

The CSS property to change the border of an element to CIELCh 68, 54.241, 0.495 is called "border". The border property can be set on classes, ids or directly on the HTML element.

This example shows the color as border, it can be applied via the CSS property "border" or "border-color".

```
.border, #border, table{ border:4px solid rgb(254, 123, 167) }
```

If only the border color should be changed use the property `border-color`.

```
.border{ border-color:rgb(254, 123, 167) }
```

If you want to add a box shadow in that color use:

Here you see how a box with a 4 pixel `rgb(254, 123, 167)` colored shadow looks like.

```
.boxshadow{ -moz-box-shadow:4px 4px 4px  
4px rgb(254, 123, 167); -webkit-box-  
shadow:4px 4px 4px 4px rgb(254, 123, 167);  
box-shadow:4px 4px 4px 4px rgb(254, 123,  
167) }
```

Background

The CSS property to change the background color of an element to CIELCh 68, 54.241, 0.495 is called "background". The background property can be set on classes, ids or directly on the HTML element.

```
.background, #background, body{  
background: rgb(254, 123, 167) }
```

If only the background color should be changed can be used:

```
.background{ background-color: rgb(254,  
123, 167) }
```

This example shows the color as background, it is applied via the CSS property "background".

To optimize and compress your CSS code, you can use our [online CSS compressor and optimizer](#) based on csstidy. If you want to create a linear or radial gradient as background or border, check our [CSS Gradient Generator](#).

Hey! You found this booklet interesting? Support Converting Colors with the new Membership Option!

The pro membership hides all ads, plus gives you double the colors in the color bucket, and more awesome pro features!

[Learn more, Memberships starting at \\$2.50/m!](#)

**Follow me
on Twitter!**

@ConvertingColor