

Converting Colors

CIELCh(69, 10.333, 29.339)

Have a look what the booklet for
CIELCh(69, 10.333, 29.339) contains.

CIELCh(69, 10.333, 29.339)	3
<i>Conversions</i>	4
<i>Details</i>	6
<i>Harmonies</i>	11
<i>Previews</i>	20
<i>Color Blindness Simulation</i>	23
<i>CSS Examples</i>	26

Color

CIELCh(69, 10.333, 29.339)

Conversions

Conversions Part 1

Format	Color
Hex	BDA3A0
RGB	189, 163, 160
RGB Percent	74%, 64%, 63%
CMY	0.2604, 0.3623, 0.3741
CMYK	0.00, 0.14, 0.15, 0.26
HSL	6°, 18%, 68%
HSV	6°, 15%, 74%
XYZ	40.2222, 39.3444, 38.5511
YIQ	170.4320, 16.4590, 4.5790

Conversions

Conversions Part 2

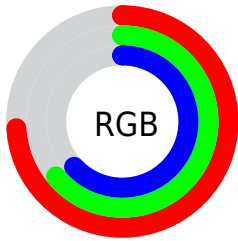
Format	Color
RYB	189, 163, 160
Decimal	12428192
CIELab	69.00, 9.01, 5.06
CIElCh	69, 10.333, 29.339
Yxy	39.3444, 0.3405, 0.3331
Android (android.graphics.Color)	4290618272 (0xFFBDA3A0)
YUV	170.4320, -5.1430, 16.2841
Hunter-Lab	62.7251, 4.6934, 7.4677

Details

The CIELCh color $69, 10.333, 29.339$ is a light color, and the websafe version is hex `CC9999`. A complement of this color would be $74, 9.335, 208.820$, and the grayscale version is $70, 0.009, 296.813$.

A 20% lighter version of the original color is $89, 10.089, 28.890$, and $49, 10.224, 27.077$ is the 20% darker color. If you saturate the color by 10%, you get $64, 17.771, 29.847$, and if you desaturate by 10%, it is $74, 3.464, 28.933$.

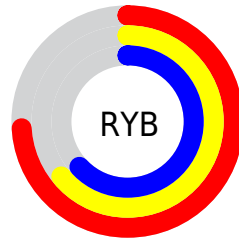
Distribution



Red (74%)

Green (64%)

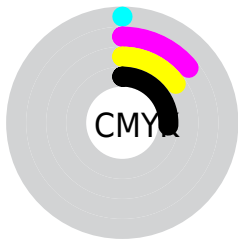
Blue (63%)



Red (74%)

Yellow (64%)

Blue (63%)

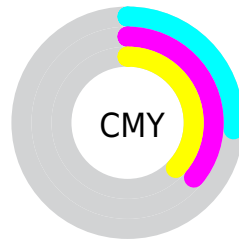


Cyan (0%)

Magenta (14%)

Yellow (15%)

Black (26%)



Cyan (26%)

Magenta (36%)

Yellow (37%)

Brightness & Saturation Gradients

These gradients show how the CIELCh color 69, 10.333, 29.339 changes by changing the brightness by 10 percent. The first figure shows a shift by +10% for each color and the second figure -10%.

Similar to the brightness gradients but the following saturation gradients show a change of the CIELCh color 69, 10.333, 29.339 by changing the saturation by 10% instead.

■ 69, 10.333, 29.339

■ 69, 10.333, 29.339

■ 100, 10.333,
29.339

■ 59, 10.333, 29.339

■ 89, 10.333, 29.339

■ 49, 10.333, 29.339

■ 99, 10.333, 29.339

■ 39, 10.333, 29.339

■ 29, 10.333, 29.339

■ 19, 10.333, 29.339

■ 9, 10.333, 29.339

■ 0, 10.333, 29.339

■ 69, 10.333, 29.339

■ 69, 10.333, 29.339

■ 64, 17.771, 29.847

■ 74, 3.464, 28.933

60, 25.802, 30.542

79, 2.871, 209.077

55, 34.410, 31.501

84, 8.725, 208.849

51, 43.522, 32.789

89, 14.150,
208.790

48, 52.985, 34.457

94, 19.195,
208.794

45, 62.514, 36.484

42, 71.547, 38.658

96, 21.514,
198.092

41, 78.871, 40.350

40, 81.760, 41.216

Harmonies

Complementary

The Complementary color scheme is a pair of colors which are on the opposite of each other on the color wheel.



69, 10.333, 29.339



74, 9.335, 208.820

Rectangle

The Rectangle color scheme consists of four colors that form a rectangle on the color wheel.



69, 10.333, 29.339



69, 10.333, 79.339



69, 10.333, 209.339



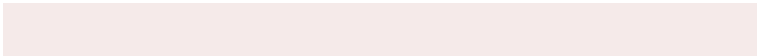
69, 10.333, 259.339

Sweetspot

The Sweet Spot groups the original color and five complimentary colors.



69, 10.332, 29.350



93, 3.983, 28.917



69, 17.945, 328.140



49, 2.724, 28.955



98, 0.011, 296.813



51, 0.007, 296.813

Same Dimension

The Same Dimension uses a secret algorithm to generate beautiful new colors.



69, 10.332, 29.350



86, 15.137, 29.479



73, 10.448, 83.447



37, 3.718, 29.109



33, 71.317, 41.220



3, 11.427, 25.824

Inverse Universe

The Inverse Universe completely reimagines the original color for something new.



74, 9.335, 208.820



92, 13.394, 208.798



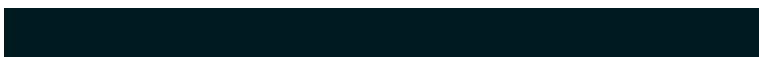
70, 10.285, 267.579



39, 3.502, 208.910



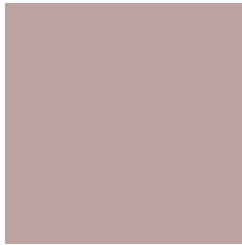
54, 31.171, 214.665



8, 10.194, 211.597

Previews

White Background



This preview shows how the CIELCh color 69, 10.333, 29.339 looks on a white background.

Color Contrast Check

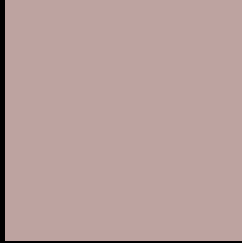
Large Text (above 18pt) WCAG AA × Fail

Any Text WCAG AA × Fail

Large Text (above 18pt) WCAG AAA × Fail

Any Text WCAG AAA × Fail

Black Background



This preview shows how the CIE LCh color 69, 10.333, 29.339 looks on a black background.

Color Contrast Check

Large Text (above 18pt) WCAG AA ✓ Pass

Any Text WCAG AA ✓ Pass

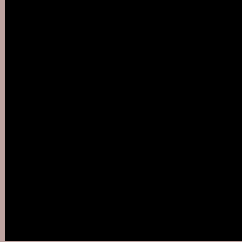
Large Text (above 18pt) WCAG AAA ✓ Pass

Any Text WCAG AAA ✓ Pass

If you want to check with other color combinations, try the [Color Contrast Checker](#).

CIELCh 69, 10.333, 29.339

Background



This preview shows how black text looks on a background with the CIELCh color 69, 10.333, 29.339.



This preview shows how white text looks on a background with the CIELCh color 69, 10.333, 29.339.

Color Blindness Simulation

Color vision deficiency is a very complex topic, and I could not describe the different causes any better than Wikipedia does, so if you want to learn more, you should check out their [article about color blindness](#).

Dichromacy



Original Color


69, 10.333, 29.339

Protanopia

69, 3.788, 79.316

Deuteranopia

69, 9.937, 29.671



Tritanopia
69, 12.869, 349.950

Trichromacy



Original Color
69, 10.333, 29.339

Protanomaly
69, 5.727, 48.183

Deuteranomaly
69, 9.937, 29.671

Tritanomaly
69, 10.907, 2.919

Monochromacy



Original Color
69, 10.333, 29.339

Achromatopsia
70, 0.009, 296.813

Achromatomaly
69, 3.863, 27.740

CSS Examples

Text

The CSS property to change the color of the text to CIELCh 69, 10.333, 29.339 is called "color". The color property can be set on classes, ids or directly on the HTML element.

This example shows how text in the color `rgb(189, 163, 160)` looks like.

```
.text, #text, p{  
    color:rgb(189, 163, 160)  
}
```

If you want to add a text shadow in that color use the text-shadow property, you can generate a text shadow directly with our [CSS Text Shadow Generator](#).

Here you see how black text with a 4 pixel rgb(189, 163, 160) colored shadow looks like.

```
.shadow{ text-shadow: 4px 4px 2px rgb(189, 163, 160) }
```

Border

The CSS property to change the border of an element to CIELCh 69, 10.333, 29.339 is called "border". The border property can be set on classes, ids or directly on the HTML element.

This example shows the color as border, it can be applied via the CSS property "border" or "border-color".

```
.border, #border, table{ border:4px solid rgb(189, 163, 160) }
```

If only the border color should be changed use the property `border-color`.

```
.border{ border-color:rgb(189, 163, 160) }
```

If you want to add a box shadow in that color use:

Here you see how a box with a 4 pixel `rgb(189, 163, 160)` colored shadow looks like.

```
.boxshadow{ -moz-box-shadow:4px 4px 4px  
4px rgb(189, 163, 160); -webkit-box-  
shadow:4px 4px 4px 4px rgb(189, 163, 160);  
box-shadow:4px 4px 4px 4px rgb(189, 163,  
160) }
```

Background

The CSS property to change the background color of an element to CIELCh 69, 10.333, 29.339 is called "background". The background property can be set on classes, ids or directly on the HTML element.

```
.background, #background, body{  
background: rgb(189, 163, 160) }
```

If only the background color should be changed can be used:

```
.background{ background-color: rgb(189,  
163, 160) }
```

This example shows the color as background, it is applied via the CSS property "background".

To optimize and compress your CSS code, you can use our [online CSS compressor and optimizer](#) based on csstidy. If you want to create a linear or radial gradient as background or border, check our [CSS Gradient Generator](#).

Hey! You found this booklet interesting? Support Converting Colors with the new Membership Option!

The pro membership hides all ads, plus gives you double the colors in the color bucket, and more awesome pro features!

[Learn more, Memberships starting at \\$2.50/m!](#)

**Follow me
on Twitter!**

@ConvertingColor