

Converting Colors

CIELCh(69, 12.088, 74.613)

Have a look what the booklet for
CIELCh(69, 12.088, 74.613) contains.

CIELCh(69, 11.987, 74.568)	3
<i>Conversions</i>	4
<i>Details</i>	6
<i>Harmonies</i>	11
<i>Previews</i>	20
<i>Color Blindness Simulation</i>	23
<i>CSS Examples</i>	26

Color

CIELCh(69, 11.987, 74.568)

Conversions

Conversions Part 1

Format	Color
Hex	B7A694
RGB	183, 166, 148
RGB Percent	72%, 65%, 58%
CMY	0.2834, 0.3500, 0.4206
CMYK	0.00, 0.09, 0.19, 0.28
HSL	31°, 19%, 65%
HSV	31°, 19%, 72%
XYZ	38.3809, 39.3444, 33.4843
YIQ	169.0310, 15.9100, -1.9940

Conversions

Conversions Part 2

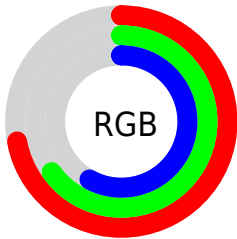
Format	Color
RYB	181, 183, 148
Decimal	12035732
CIELab	69.00, 3.19, 11.55
CIELCh	69, 11.987, 74.568
Yxy	39.3444, 0.3451, 0.3538
Android (android.graphics.Color)	4290225812 (0xFFB7A694)
YUV	169.0310, -10.3683, 12.2508
Hunter-Lab	62.7251, -0.5465, 12.2570

Details

The CIELCh color $69, 11.987, 74.568$ is a light color, and the websafe version is hex 999999 . A complement of this color would be $67, 11.459, 259.695$, and the grayscale version is $69, 0.009, 296.813$.

A 20% lighter version of the original color is $89, 11.958, 74.905$, and $49, 12.189, 73.966$ is the 20% darker color. If you saturate the color by 10%, you get $66, 18.660, 73.324$, and if you desaturate by 10%, it is $72, 5.600, 75.791$.

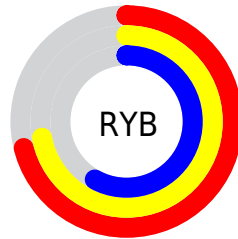
Distribution



Red (72%)

Green (65%)

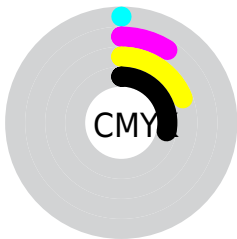
Blue (58%)



Red (71%)

Yellow (72%)

Blue (58%)

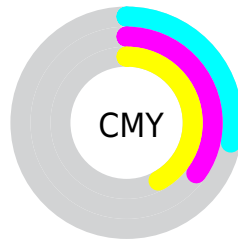


Cyan (0%)

Magenta (9%)

Yellow (19%)

Black (28%)



Cyan (28%)

Magenta (35%)

Yellow (42%)

Brightness & Saturation Gradients

These gradients show how the CIELCh color 69, 11.987, 74.568 changes by changing the brightness by 10 percent. The first figure shows a shift by +10% for each color and the second figure -10%.

Similar to the brightness gradients but the following saturation gradients show a change of the CIELCh color 69, 11.987, 74.568 by changing the saturation by 10% instead.

■ 69, 11.987, 74.568

■ 69, 11.987, 74.568

■ 100, 11.987,
74.568

■ 59, 11.987, 74.568

■ 89, 11.987, 74.568

■ 49, 11.987, 74.568

■ 99, 11.987, 74.568

■ 39, 11.987, 74.568

■ 29, 11.987, 74.568

■ 19, 11.987, 74.568

■ 9, 11.987, 74.568

■ 0, 11.987, 74.568

■ 69, 11.987, 74.568

■ 69, 11.987, 74.568

■ 66, 18.660, 73.324

■ 72, 5.600, 75.791

64, 25.623, 72.049

75, 0.520, 257.709

61, 32.856, 70.755

77, 6.397, 258.304

59, 40.287, 69.430

80, 12.056,
259.425

56, 47.741, 68.030

83, 17.520,
260.520

54, 54.856, 66.455

52, 60.973, 64.494

86, 21.774,
259.676

50, 65.578, 62.014

88, 19.825,
244.603

50, 65.984, 61.824

91, 19.412,
227.859

93, 20.577,
211.921

Harmonies

Complementary

The Complementary color scheme is a pair of colors which are on the opposite of each other on the color wheel.



69, 11.987, 74.568



67, 11.459, 259.695

Rectangle

The Rectangle color scheme consists of four colors that form a rectangle on the color wheel.



69, 11.987, 74.568



69, 11.987, 124.568



69, 11.987, 254.568



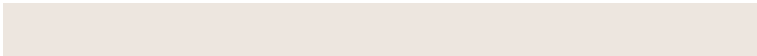
69, 11.987, 304.568

Sweetspot

The Sweet Spot groups the original color and five complimentary colors.



69, 11.987, 74.579



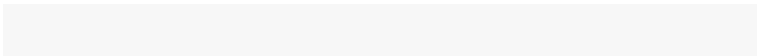
92, 4.509, 76.135



65, 16.563, 345.291



49, 3.020, 76.064



97, 0.011, 296.813



50, 0.007, 296.813

Same Dimension

The Same Dimension uses a secret algorithm to generate beautiful new colors.



69, 11.987, 74.579



86, 17.966, 74.051



73, 18.804, 108.346



37, 3.484, 75.769



42, 58.454, 62.329



5, 8.804, 62.811

Inverse Universe

The Inverse Universe completely reimagines the original color for something new.



67, 11.459, 259.695



83, 16.980, 260.414



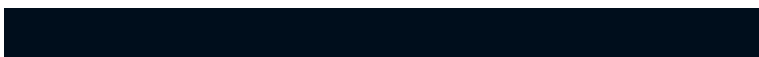
62, 19.643, 292.298



37, 3.417, 258.234



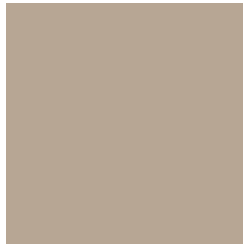
33, 50.698, 284.817



4, 10.351, 268.493

Previews

White Background



This preview shows how the CIELCh color 69, 11.987, 74.568 looks on a white background.

Color Contrast Check

Large Text (above 18pt) WCAG AA × Fail

Any Text WCAG AA × Fail

Large Text (above 18pt) WCAG AAA × Fail

Any Text WCAG AAA × Fail

Black Background



This preview shows how the CIELCh color 69, 11.987, 74.568 looks on a black background.

Color Contrast Check

Large Text (above 18pt) WCAG AA ✓ Pass

Any Text WCAG AA ✓ Pass

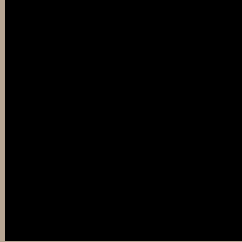
Large Text (above 18pt) WCAG AAA ✓ Pass

Any Text WCAG AAA ✓ Pass

If you want to check with other color combinations, try the [Color Contrast Checker](#).

CIELCh 69, 11.987, 74.568

Background



This preview shows how black text looks on a background with the CIELCh color 69, 11.987, 74.568.



This preview shows how white text looks on a background with the CIELCh color 69, 11.987, 74.568.

Color Blindness Simulation

Color vision deficiency is a very complex topic, and I could not describe the different causes any better than Wikipedia does, so if you want to learn more, you should check out their [article about color blindness](#).

Dichromacy



Original Color

69, 11.987, 74.568

Protanopia

69, 10.852, 92.097

Deuteranopia

69, 14.394, 52.201



Tritanopia
69, 11.571, 342.483

Trichromacy



Original Color
69, 11.987, 74.568

Protanomaly
69, 10.771, 85.198

Deuteranomaly
69, 13.357, 57.772

Tritanomaly
69, 8.575, 12.822

Monochromacy



Original Color
69, 11.987, 74.568

Achromatopsia
69, 0.009, 296.813

Achromatomaly
69, 4.458, 78.481

CSS Examples

Text

The CSS property to change the color of the text to CIELCh 69, 11.987, 74.568 is called "color". The color property can be set on classes, ids or directly on the HTML element.

This example shows how text in the color `rgb(183, 166, 148)` looks like.

```
.text, #text, p{  
    color:rgb(183, 166, 148)  
}
```

If you want to add a text shadow in that color use the text-shadow property, you can generate a text shadow directly with our [CSS Text Shadow Generator](#).

Here you see how black text with a 4 pixel rgb(183, 166, 148) colored shadow looks like.

```
.shadow{ text-shadow: 4px 4px 2px rgb(183, 166, 148) }
```

Border

The CSS property to change the border of an element to CIELCh 69, 11.987, 74.568 is called "border". The border property can be set on classes, ids or directly on the HTML element.

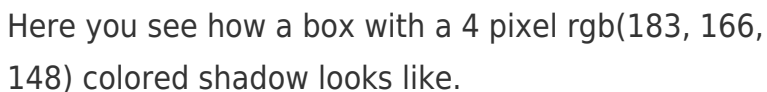
This example shows the color as border, it can be applied via the CSS property "border" or "border-color".

```
.border, #border, table{ border:4px solid rgb(183, 166, 148) }
```

If only the border color should be changed use the property `border-color`.

```
.border{ border-color:rgb(183, 166, 148) }
```

If you want to add a box shadow in that color use:



Here you see how a box with a 4 pixel `rgb(183, 166, 148)` colored shadow looks like.

```
.boxshadow{ -moz-box-shadow:4px 4px 4px 4px rgb(183, 166, 148); -webkit-box-shadow:4px 4px 4px 4px rgb(183, 166, 148); box-shadow:4px 4px 4px 4px rgb(183, 166, 148) }
```

Background

The CSS property to change the background color of an element to CIELCh 69, 11.987, 74.568 is called "background". The background property can be set on classes, ids or directly on the HTML element.

```
.background, #background, body{  
background: rgb(183, 166, 148) }
```

If only the background color should be changed can be used:

```
.background{ background-color: rgb(183,  
166, 148) }
```

This example shows the color as background, it is applied via the CSS property "background".

To optimize and compress your CSS code, you can use our [online CSS compressor and optimizer](#) based on csstidy. If you want to create a linear or radial gradient as background or border, check our [CSS Gradient Generator](#).

Hey! You found this booklet interesting? Support Converting Colors with the new Membership Option!

The pro membership hides all ads, plus gives you double the colors in the color bucket, and more awesome pro features!

[Learn more, Memberships starting at \\$2.50/m!](#)

**Follow me
on Twitter!**

@ConvertingColor