

Converting Colors

CIELCh(69, 13.628, 10.572)

Have a look what the booklet for
CIELCh(69, 13.628, 10.572) contains.

CIELCh(69, 13.427, 11.300)	3
<i>Conversions</i>	4
<i>Details</i>	6
<i>Harmonies</i>	11
<i>Previews</i>	20
<i>Color Blindness Simulation</i>	23
<i>CSS Examples</i>	26

Color

CIELCh(69, 13.427, 11.300)

Conversions

Conversions Part 1

Format	Color
Hex	C2A0A4
RGB	194, 160, 164
RGB Percent	76%, 63%, 64%
CMY	0.2388, 0.3721, 0.3565
CMYK	0.00, 0.18, 0.15, 0.24
HSL	353°, 22%, 69%
HSV	353°, 18%, 76%
XYZ	41.5740, 39.3444, 40.5733
YIQ	170.6220, 18.9800, 8.4520

Conversions

Conversions Part 2

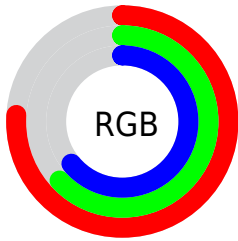
Format	Color
RYB	194, 160, 164
Decimal	12755108
CIELab	69.00, 13.17, 2.63
CIELCh	69, 13.427, 11.300
Yxy	39.3444, 0.3422, 0.3238
Android (android.graphics.Color)	4290945188 (0xFFC2A0A4)
YUV	170.6220, -3.2646, 20.5025
Hunter-Lab	62.7251, 8.5403, 5.5562

Details

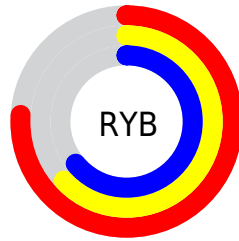
The CIELCh color $69, 13.427, 11.300$ is a light color, and the websafe version is hex `CC9999`. A complement of this color would be $76, 12.299, 188.371$, and the grayscale version is $70, 0.009, 296.813$.

A 20% lighter version of the original color is $89, 13.407, 11.495$, and $49, 13.626, 11.276$ is the 20% darker color. If you saturate the color by 10%, you get $64, 21.724, 12.520$, and if you desaturate by 10%, it is $74, 5.584, 10.269$.

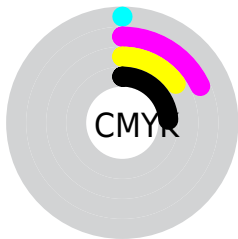
Distribution



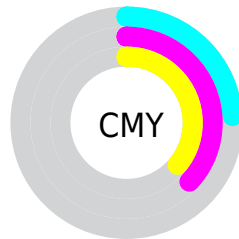
- Red (76%)
- Green (63%)
- Blue (64%)



- Red (76%)
- Yellow (63%)
- Blue (64%)



- Cyan (0%)
- Magenta (18%)
- Yellow (15%)
- Black (24%)



- Cyan (24%)
- Magenta (37%)
- Yellow (36%)

Brightness & Saturation Gradients

These gradients show how the CIELCh color 69, 13.427, 11.300 changes by changing the brightness by 10 percent. The first figure shows a shift by +10% for each color and the second figure -10%.

Similar to the brightness gradients but the following saturation gradients show a change of the CIELCh color 69, 13.427, 11.300 by changing the saturation by 10% instead.

69, 13.427, 11.300

69, 13.427, 11.300

100, 13.427,
11.300

59, 13.427, 11.300

89, 13.427, 11.300

49, 13.427, 11.300

99, 13.427, 11.300

39, 13.427, 11.300

29, 13.427, 11.300

19, 13.427, 11.300

9, 13.427, 11.300

0, 13.427, 11.300

69, 13.427, 11.300

69, 13.427, 11.300

64, 21.724, 12.520

74, 5.584, 10.269

■ 59, 30.410, 14.011

■ 80, 1.783, 189.833

■ 54, 39.343, 15.882

■ 85, 8.687, 188.906

■ 50, 48.295, 18.254

■ 91, 15.160,
188.282

■ 46, 56.972, 21.264

■ 96, 20.334,
190.499

■ 44, 65.071, 25.007

■ 42, 72.350, 29.431

■ 96, 19.881,
198.195

■ 41, 78.601, 34.079

■ 40, 80.047, 35.071

Harmonies

Complementary

The Complementary color scheme is a pair of colors which are on the opposite of each other on the color wheel.



69, 13.427, 11.300



76, 12.299, 188.371

Rectangle

The Rectangle color scheme consists of four colors that form a rectangle on the color wheel.



69, 13.427, 11.300



69, 13.427, 61.300



69, 13.427, 191.300



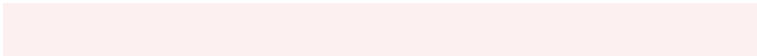
69, 13.427, 241.300

Sweetspot

The Sweet Spot groups the original color and five complimentary colors.



69, 13.425, 11.307



96, 4.563, 10.010



69, 21.586, 321.574



51, 3.145, 10.089



0, 0.000, 0.000



53, 0.007, 296.813

Same Dimension

The Same Dimension uses a secret algorithm to generate beautiful new colors.



69, 13.425, 11.307



85, 20.156, 11.743



72, 10.868, 58.215



38, 4.230, 10.456



33, 69.038, 34.374



3, 14.108, 13.011

Inverse Universe

The Inverse Universe completely reimagines the original color for something new.



69, 13.425, 11.307



85, 20.156, 11.743



73, 10.002, 241.784



38, 4.230, 10.456



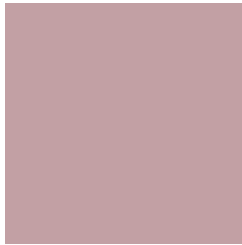
33, 69.038, 34.374



3, 14.108, 13.011

Previews

White Background



This preview shows how the CIELCh color 69, 13.427, 11.300 looks on a white background.

Color Contrast Check

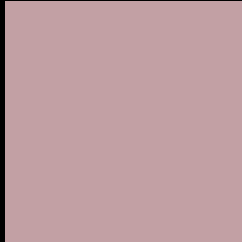
Large Text (above 18pt) WCAG AA × Fail

Any Text WCAG AA × Fail

Large Text (above 18pt) WCAG AAA × Fail

Any Text WCAG AAA × Fail

Black Background



This preview shows how the CIELCh color 69, 13.427, 11.300 looks on a black background.

Color Contrast Check

Large Text (above 18pt) WCAG AA ✓ Pass

Any Text WCAG AA ✓ Pass

Large Text (above 18pt) WCAG AAA ✓ Pass

Any Text WCAG AAA ✓ Pass

If you want to check with other color combinations, try the [Color Contrast Checker](#).

CIELCh 69, 13.427, 11.300

Background



This preview shows how black text looks on a background with the CIELCh color 69, 13.427, 11.300.



This preview shows how white text looks on a background with the CIELCh color 69, 13.427, 11.300.

Color Blindness Simulation

Color vision deficiency is a very complex topic, and I could not describe the different causes any better than Wikipedia does, so if you want to learn more, you should check out their [article about color blindness](#).

Dichromacy



Original Color

69, 13.427, 11.300

Protanopia

69, 1.137, 19.078

Deuteranopia

69, 9.329, 16.852



Tritanopia
69, 15.291, 355.498

Trichromacy



Original Color
69, 13.427, 11.300

Protanomaly
69, 5.476, 8.295

Deuteranomaly
69, 10.943, 14.656

Tritanomaly
69, 14.747, 1.357

Monochromacy



Original Color
69, 13.427, 11.300

Achromatopsia
70, 0.009, 296.813

Achromatomaly
70, 4.620, 12.925

CSS Examples

Text

The CSS property to change the color of the text to CIELCh 69, 13.427, 11.300 is called "color". The color property can be set on classes, ids or directly on the HTML element.

This example shows how text in the color `rgb(194, 160, 164)` looks like.

```
.text, #text, p{  
    color:rgb(194, 160, 164)  
}
```

If you want to add a text shadow in that color use the text-shadow property, you can generate a text shadow directly with our [CSS Text Shadow Generator](#).

Here you see how black text with a 4 pixel rgb(194, 160, 164) colored shadow looks like.

```
.shadow{ text-shadow: 4px 4px 2px rgb(194, 160, 164) }
```

Border

The CSS property to change the border of an element to CIELCh 69, 13.427, 11.300 is called "border". The border property can be set on classes, ids or directly on the HTML element.

This example shows the color as border, it can be applied via the CSS property "border" or "border-color".

```
.border, #border, table{ border:4px solid rgb(194, 160, 164) }
```

If only the border color should be changed use the property `border-color`.

```
.border{ border-color:rgb(194, 160, 164) }
```

If you want to add a box shadow in that color use:

Here you see how a box with a 4 pixel `rgb(194, 160, 164)` colored shadow looks like.

```
.boxshadow{ -moz-box-shadow:4px 4px 4px  
4px rgb(194, 160, 164); -webkit-box-  
shadow:4px 4px 4px 4px rgb(194, 160, 164);  
box-shadow:4px 4px 4px 4px rgb(194, 160,  
164) }
```

Background

The CSS property to change the background color of an element to CIELCh 69, 13.427, 11.300 is called "background". The background property can be set on classes, ids or directly on the HTML element.

```
.background, #background, body{  
background: rgb(194, 160, 164) }
```

If only the background color should be changed can be used:

```
.background{ background-color: rgb(194,  
160, 164) }
```

This example shows the color as background, it is applied via the CSS property "background".

To optimize and compress your CSS code, you can use our [online CSS compressor and optimizer](#) based on csstidy. If you want to create a linear or radial gradient as background or border, check our [CSS Gradient Generator](#).

Hey! You found this booklet interesting? Support Converting Colors with the new Membership Option!

The pro membership hides all ads, plus gives you double the colors in the color bucket, and more awesome pro features!

[Learn more, Memberships starting at \\$2.50/m!](#)

**Follow me
on Twitter!**

@ConvertingColor