

Converting Colors

CIELCh(69, 14.774, 20.728)

Have a look what the booklet for
CIELCh(69, 14.774, 20.728) contains.

CIELCh(69, 15.013, 20.756)	3
<i>Conversions</i>	4
<i>Details</i>	6
<i>Harmonies</i>	11
<i>Previews</i>	20
<i>Color Blindness Simulation</i>	23
<i>CSS Examples</i>	26

Color

CIELCh(69, 15.013, 20.756)

Conversions

Conversions Part 1

Format	Color
Hex	C59F9F
RGB	197, 159, 159
RGB Percent	77%, 62%, 62%
CMY	0.2261, 0.3751, 0.3752
CMYK	0.00, 0.19, 0.19, 0.23
HSL	0°, 25%, 70%
HSV	0°, 19%, 77%
XYZ	41.8612, 39.3444, 38.3409
YIQ	170.3620, 22.6480, 8.0560

Conversions

Conversions Part 2

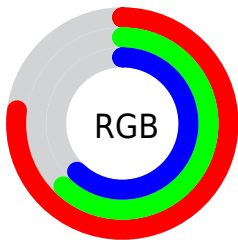
Format	Color
R _Y B	197, 159, 159
Decimal	12951455
CIE Lab	69.00, 14.04, 5.32
CIE LCh	69, 15.013, 20.756
Yxy	39.3444, 0.3502, 0.3291
Android (android.graphics.Color)	4291141535 (0xFFC59F9F)
YUV	170.3620, -5.6015, 23.3615
Hunter-Lab	62.7251, 9.3575, 7.6664

Details

The CIELCh color $69, 15.013, 20.756$ is a light color, and the websafe version is hex `CC9999`. A complement of this color would be $77, 13.241, 198.449$, and the grayscale version is $70, 0.009, 296.813$.

A 20% lighter version of the original color is $89, 14.872, 20.461$, and $49, 15.352, 19.125$ is the 20% darker color. If you saturate the color by 10%, you get $64, 23.690, 21.813$, and if you desaturate by 10%, it is $74, 6.941, 19.923$.

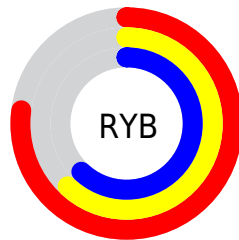
Distribution



Red (77%)

Green (62%)

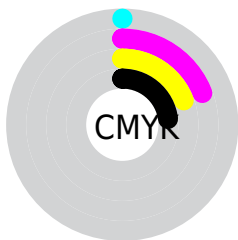
Blue (62%)



Red (77%)

Yellow (62%)

Blue (62%)

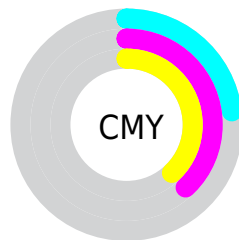


Cyan (0%)

Magenta (19%)

Yellow (19%)

Black (23%)



Cyan (23%)

Magenta (38%)

Yellow (38%)

Brightness & Saturation Gradients

These gradients show how the CIELCh color 69, 15.013, 20.756 changes by changing the brightness by 10 percent. The first figure shows a shift by +10% for each color and the second figure -10%.

Similar to the brightness gradients but the following saturation gradients show a change of the CIELCh color 69, 15.013, 20.756 by changing the saturation by 10% instead.

69, 15.013, 20.756

69, 15.013, 20.756

100, 15.013,
20.756

59, 15.013, 20.756

89, 15.013, 20.756

49, 15.013, 20.756

99, 15.013, 20.756

39, 15.013, 20.756

29, 15.013, 20.756

19, 15.013, 20.756

9, 15.013, 20.756

0, 15.013, 20.756

69, 15.013, 20.756

69, 15.013, 20.756

64, 23.690, 21.813

74, 6.941, 19.923

■ 59, 32.936, 23.173

■ 80, 0.529, 200.414

■ 54, 42.636, 24.948

■ 86, 7.438, 198.967

■ 50, 52.580, 27.246

■ 91, 13.837,
198.546

■ 46, 62.465, 30.144

■ 96, 18.905,
198.257

■ 44, 71.861, 33.571

■ 42, 79.995, 37.069

■ 41, 85.790, 39.792

■ 41, 86.225, 40.001

Harmonies

Complementary

The Complementary color scheme is a pair of colors which are on the opposite of each other on the color wheel.



69, 15.013, 20.756



77, 13.241, 198.449

Rectangle

The Rectangle color scheme consists of four colors that form a rectangle on the color wheel.



69, 15.013, 20.756



69, 15.013, 70.756



69, 15.013, 200.756



69, 15.013, 250.756

Sweetspot

The Sweet Spot groups the original color and five complimentary colors.



69, 15.011, 20.763



96, 5.467, 19.667



70, 25.016, 325.481



51, 3.636, 19.722



0, 0.000, 0.000



53, 0.007, 296.813

Same Dimension

The Same Dimension uses a secret algorithm to generate beautiful new colors.



69, 15.011, 20.763



84, 22.419, 21.161



74, 12.738, 73.038



39, 4.278, 19.933



34, 74.643, 39.778



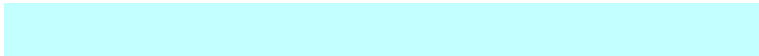
3, 15.883, 19.411

Inverse Universe

The Inverse Universe completely reimagines the original color for something new.



77, 13.241, 198.449



96, 19.206, 198.249



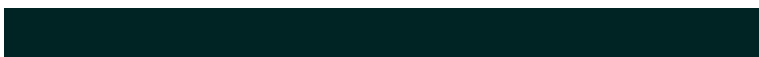
72, 12.113, 258.164



41, 4.034, 198.989



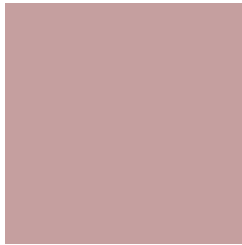
61, 35.882, 196.405



12, 12.982, 196.401

Previews

White Background



This preview shows how the CIELCh color 69, 15.013, 20.756 looks on a white background.

Color Contrast Check

Large Text (above 18pt) WCAG AA × Fail

Any Text WCAG AA × Fail

Large Text (above 18pt) WCAG AAA × Fail

Any Text WCAG AAA × Fail

Black Background



This preview shows how the CIELCh color 69, 15.013, 20.756 looks on a black background.

Color Contrast Check

Large Text (above 18pt) WCAG AA ✓ Pass

Any Text WCAG AA ✓ Pass

Large Text (above 18pt) WCAG AAA ✓ Pass

Any Text WCAG AAA ✓ Pass

If you want to check with other color combinations, try the [Color Contrast Checker](#).

CIELCh 69, 15.013, 20.756

Background



This preview shows how black text looks on a background with the CIELCh color 69, 15.013, 20.756.



This preview shows how white text looks on a background with the CIELCh color 69, 15.013, 20.756.

Color Blindness Simulation

Color vision deficiency is a very complex topic, and I could not describe the different causes any better than Wikipedia does, so if you want to learn more, you should check out their [article about color blindness](#).

Dichromacy



Original Color

69, 15.013, 20.756

Protanopia

69, 2.891, 68.470

Deuteranopia

69, 10.459, 32.253



Tritanopia
69, 17.093, 358.559

Trichromacy



Original Color
69, 15.013, 20.756

Protanomaly
69, 6.795, 33.831

Deuteranomaly
69, 11.940, 28.256

Tritanomaly
69, 16.137, 5.277

Monochromacy



Original Color
69, 15.013, 20.756

Achromatopsia
70, 0.009, 296.813

Achromatomaly
70, 5.369, 19.788

CSS Examples

Text

The CSS property to change the color of the text to CIELCh 69, 15.013, 20.756 is called "color". The color property can be set on classes, ids or directly on the HTML element.

This example shows how text in the color `rgb(197, 159, 159)` looks like.

```
.text, #text, p{  
    color:rgb(197, 159, 159)  
}
```

If you want to add a text shadow in that color use the text-shadow property, you can generate a text shadow directly with our [CSS Text Shadow Generator](#).

Here you see how black text with a 4 pixel rgb(197, 159, 159) colored shadow looks like.

```
.shadow{ text-shadow: 4px 4px 2px rgb(197, 159, 159) }
```

Border

The CSS property to change the border of an element to CIELCh 69, 15.013, 20.756 is called "border". The border property can be set on classes, ids or directly on the HTML element.

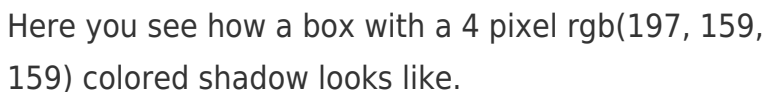
This example shows the color as border, it can be applied via the CSS property "border" or "border-color".

```
.border, #border, table{ border:4px solid rgb(197, 159, 159) }
```

If only the border color should be changed use the property `border-color`.

```
.border{ border-color:rgb(197, 159, 159) }
```

If you want to add a box shadow in that color use:



Here you see how a box with a 4 pixel `rgb(197, 159, 159)` colored shadow looks like.

```
.boxshadow{ -moz-box-shadow:4px 4px 4px 4px rgb(197, 159, 159); -webkit-box-shadow:4px 4px 4px 4px rgb(197, 159, 159); box-shadow:4px 4px 4px 4px rgb(197, 159, 159) }
```

Background

The CSS property to change the background color of an element to CIELCh 69, 15.013, 20.756 is called "background". The background property can be set on classes, ids or directly on the HTML element.

```
.background, #background, body{  
background: rgb(197, 159, 159) }
```

If only the background color should be changed can be used:

```
.background{ background-color: rgb(197,  
159, 159) }
```

This example shows the color as background, it is applied via the CSS property "background".

To optimize and compress your CSS code, you can use our [online CSS compressor and optimizer](#) based on csstidy. If you want to create a linear or radial gradient as background or border, check our [CSS Gradient Generator](#).

Hey! You found this booklet interesting? Support Converting Colors with the new Membership Option!

The pro membership hides all ads, plus gives you double the colors in the color bucket, and more awesome pro features!

[Learn more, Memberships starting at \\$2.50/m!](#)

**Follow me
on Twitter!**

@ConvertingColor