

Converting Colors

CIELCh(69, 15.576, 23.495)

Have a look what the booklet for
CIELCh(69, 15.576, 23.495) contains.

CIELCh(69, 15.468, 22.798)	3
<i>Conversions</i>	4
<i>Details</i>	6
<i>Harmonies</i>	11
<i>Previews</i>	20
<i>Color Blindness Simulation</i>	23
<i>CSS Examples</i>	26

Color

CIELCh(69, 15.468, 22.798)

Conversions

Conversions Part 1

Format	Color
Hex	C69F9E
RGB	198, 159, 158
RGB Percent	78%, 62%, 62%
CMY	0.2229, 0.3759, 0.3798
CMYK	0.00, 0.20, 0.20, 0.22
HSL	2°, 26%, 70%
HSV	2°, 20%, 78%
XYZ	41.9342, 39.3444, 37.7953
YIQ	170.5470, 23.5650, 7.9570

Conversions

Conversions Part 2

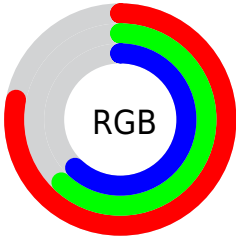
Format	Color
R_{YB}	198, 159, 158
Decimal	13016990
CIE _{Lab}	69.00, 14.26, 5.99
CIE _{LCh}	69, 15.468, 22.798
Yxy	39.3444, 0.3522, 0.3304
Android (android.graphics.Color)	4291207070 (0xFFC69F9E)
YUV	170.5470, -6.1857, 24.0763
Hunter-Lab	62.7251, 9.5652, 8.1821

Details

The CIELCh color **69, 15.468, 22.798** is a light color, and the websafe version is hex **CC9999**. A complement of this color would be **77, 13.530, 200.719**, and the grayscale version is **70, 0.009, 296.813**.

A 20% lighter version of the original color is **89, 15.290, 22.418**, and **49, 15.837, 21.332** is the 20% darker color. If you saturate the color by 10%, you get **64, 24.044, 23.772**, and if you desaturate by 10%, it is **74, 7.501, 22.044**.

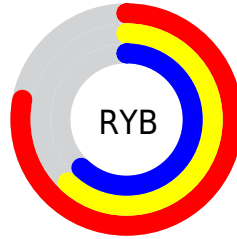
Distribution



Red (78%)

Green (62%)

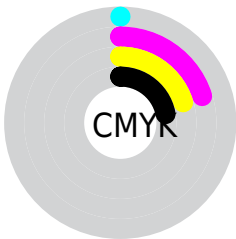
Blue (62%)



Red (78%)

Yellow (62%)

Blue (62%)

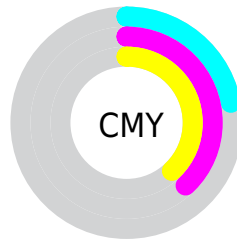


Cyan (0%)

Magenta (20%)

Yellow (20%)

Black (22%)



Cyan (22%)

Magenta (38%)

Yellow (38%)

Brightness & Saturation Gradients

These gradients show how the CIELCh color 69, 15.468, 22.798 changes by changing the brightness by 10 percent. The first figure shows a shift by +10% for each color and the second figure -10%.

Similar to the brightness gradients but the following saturation gradients show a change of the CIELCh color 69, 15.468, 22.798 by changing the saturation by 10% instead.

69, 15.468, 22.798

69, 15.468, 22.798

100, 15.468,
22.798

59, 15.468, 22.798

89, 15.468, 22.798

49, 15.468, 22.798

99, 15.468, 22.798

39, 15.468, 22.798

29, 15.468, 22.798

19, 15.468, 22.798

9, 15.468, 22.798

0, 15.468, 22.798

69, 15.468, 22.798

69, 15.468, 22.798

64, 24.044, 23.772

74, 7.501, 22.044

■ 59, 33.204, 25.036

■ 80, 0.136, 17.520

■ 54, 42.845, 26.693

■ 85, 6.671, 201.227

■ 50, 52.780, 28.839

■ 91, 12.971,
200.862

■ 47, 62.719, 31.531

■ 96, 18.664,
198.272

■ 44, 72.217, 34.675

■ 42, 80.418, 37.794

■ 41, 86.146, 40.242

Harmonies

Complementary

The Complementary color scheme is a pair of colors which are on the opposite of each other on the color wheel.



69, 15.468, 22.798



77, 13.530, 200.719

Rectangle

The Rectangle color scheme consists of four colors that form a rectangle on the color wheel.



69, 15.468, 22.798



69, 15.468, 72.798



69, 15.468, 202.798



69, 15.468, 252.798

Sweetspot

The Sweet Spot groups the original color and five complimentary colors.



69, 15.466, 22.805



96, 5.333, 21.748



70, 26.016, 325.985



51, 3.546, 21.799



0, 0.000, 0.000



53, 0.007, 296.813

Same Dimension

The Same Dimension uses a secret algorithm to generate beautiful new colors.



69, 15.466, 22.805



84, 22.935, 23.178



74, 13.556, 74.669



39, 4.174, 21.987



34, 74.299, 40.110



4, 15.636, 20.729

Inverse Universe

The Inverse Universe completely reimagines the original color for something new.



77, 13.530, 200.719



96, 19.461, 200.560



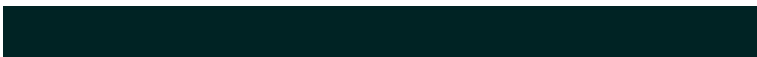
72, 12.928, 260.128



41, 3.933, 201.205



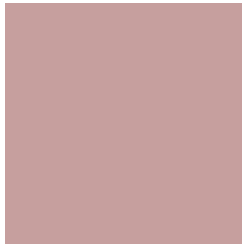
59, 34.664, 200.356



11, 12.634, 199.455

Previews

White Background



This preview shows how the CIELCh color 69, 15.468, 22.798 looks on a white background.

Color Contrast Check

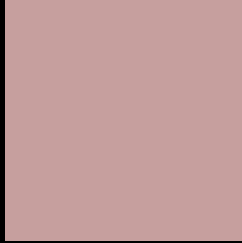
Large Text (above 18pt) WCAG AA × Fail

Any Text WCAG AA × Fail

Large Text (above 18pt) WCAG AAA × Fail

Any Text WCAG AAA × Fail

Black Background



This preview shows how the CIELCh color 69, 15.468, 22.798 looks on a black background.

Color Contrast Check

Large Text (above 18pt) WCAG AA ✓ Pass

Any Text WCAG AA ✓ Pass

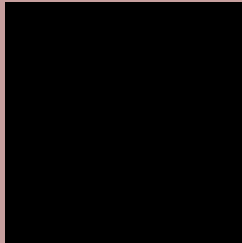
Large Text (above 18pt) WCAG AAA ✓ Pass

Any Text WCAG AAA ✓ Pass

If you want to check with other color combinations, try the [Color Contrast Checker](#).

CIELCh 69, 15.468, 22.798

Background



This preview shows how black text looks on a background with the CIELCh color 69, 15.468, 22.798.



This preview shows how white text looks on a background with the CIELCh color 69, 15.468, 22.798.

Color Blindness Simulation

Color vision deficiency is a very complex topic, and I could not describe the different causes any better than Wikipedia does, so if you want to learn more, you should check out their [article about color blindness](#).

Dichromacy



Original Color

69, 15.468, 22.798

Protanopia

69, 3.325, 74.631

Deuteranopia

69, 10.791, 37.834



Tritanopia
69, 18.013, 357.992

Trichromacy



Original Color
69, 15.468, 22.798

Protanomaly
69, 6.962, 38.154

Deuteranomaly
69, 12.199, 33.264

Tritanomaly
69, 16.519, 5.694

Monochromacy



Original Color
69, 15.468, 22.798

Achromatopsia
70, 0.009, 296.813

Achromatomaly
70, 5.406, 25.571

CSS Examples

Text

The CSS property to change the color of the text to CIELCh 69, 15.468, 22.798 is called "color". The color property can be set on classes, ids or directly on the HTML element.

This example shows how text in the color `rgb(198, 159, 158)` looks like.

```
.text, #text, p{  
    color:rgb(198, 159, 158)  
}
```

If you want to add a text shadow in that color use the text-shadow property, you can generate a text shadow directly with our [CSS Text Shadow Generator](#).

Here you see how black text with a 4 pixel rgb(198, 159, 158) colored shadow looks like.

```
.shadow{ text-shadow: 4px 4px 2px rgb(198, 159, 158) }
```

Border

The CSS property to change the border of an element to CIELCh 69, 15.468, 22.798 is called "border". The border property can be set on classes, ids or directly on the HTML element.

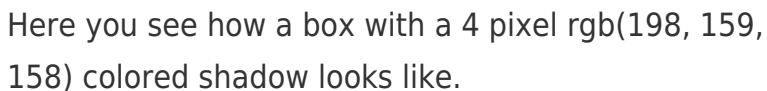
This example shows the color as border, it can be applied via the CSS property "border" or "border-color".

```
.border, #border, table{ border:4px solid rgb(198, 159, 158) }
```

If only the border color should be changed use the property `border-color`.

```
.border{ border-color:rgb(198, 159, 158) }
```

If you want to add a box shadow in that color use:



Here you see how a box with a 4 pixel `rgb(198, 159, 158)` colored shadow looks like.

```
.boxshadow{ -moz-box-shadow:4px 4px 4px 4px rgb(198, 159, 158); -webkit-box-shadow:4px 4px 4px 4px rgb(198, 159, 158); box-shadow:4px 4px 4px 4px rgb(198, 159, 158) }
```

Background

The CSS property to change the background color of an element to CIELCh 69, 15.468, 22.798 is called "background". The background property can be set on classes, ids or directly on the HTML element.

```
.background, #background, body{  
background: rgb(198, 159, 158) }
```

If only the background color should be changed can be used:

```
.background{ background-color: rgb(198,  
159, 158) }
```

This example shows the color as background, it is applied via the CSS property "background".

To optimize and compress your CSS code, you can use our [online CSS compressor and optimizer](#) based on csstidy. If you want to create a linear or radial gradient as background or border, check our [CSS Gradient Generator](#).

Hey! You found this booklet interesting? Support Converting Colors with the new Membership Option!

The pro membership hides all ads, plus gives you double the colors in the color bucket, and more awesome pro features!

[Learn more, Memberships starting at \\$2.50/m!](#)

**Follow me
on Twitter!**

@ConvertingColor