

Converting Colors

CIELCh(69, 16.653, 41.644)

Have a look what the booklet for
CIELCh(69, 16.653, 41.644) contains.

CIELCh(69, 16.575, 41.744)	3
<i>Conversions</i>	4
<i>Details</i>	6
<i>Harmonies</i>	11
<i>Previews</i>	20
<i>Color Blindness Simulation</i>	23
<i>CSS Examples</i>	26

Color

CIELCh(69, 16.575, 41.744)

Conversions

Conversions Part 1

Format	Color
Hex	C6A095
RGB	198, 160, 149
RGB Percent	78%, 63%, 58%
CMY	0.2233, 0.3723, 0.4155
CMYK	0.00, 0.19, 0.25, 0.22
HSL	13°, 30%, 68%
HSV	13°, 25%, 78%
XYZ	41.3118, 39.3444, 33.8721
YIQ	170.1080, 26.1790, 4.6350

Conversions

Conversions Part 2

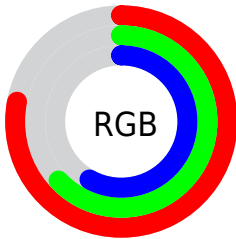
Format	Color
R _Y B	198, 163, 149
Decimal	13017237
CIE Lab	69.00, 12.37, 11.04
CIE LCh	69, 16.575, 41.744
Yxy	39.3444, 0.3607, 0.3435
Android (android.graphics.Color)	4291207317 (0xFFC6A095)
YUV	170.1080, -10.4062, 24.4613
Hunter-Lab	62.7251, 7.7941, 11.8905

Details

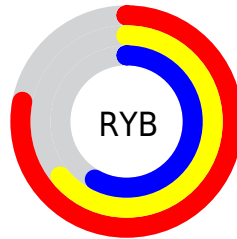
The CIELCh color **69, 16.575, 41.744** is a light color, and the websafe version is hex **CC9999**. A complement of this color would be **74, 14.088, 223.716**, and the grayscale version is **70, 0.009, 296.813**.

A 20% lighter version of the original color is **89, 16.444, 42.473**, and **49, 16.586, 41.480** is the 20% darker color. If you saturate the color by 10%, you get **65, 24.255, 41.729**, and if you desaturate by 10%, it is **73, 9.479, 41.893**.

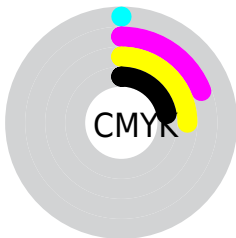
Distribution



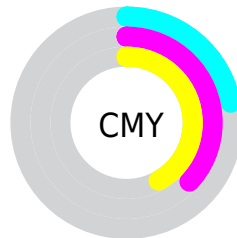
- Red (78%)
- Green (63%)
- Blue (58%)



- Red (78%)
- Yellow (64%)
- Blue (58%)



- Cyan (0%)
- Magenta (19%)
- Yellow (25%)
- Black (22%)



- Cyan (22%)
- Magenta (37%)
- Yellow (42%)


Brightness & Saturation Gradients

These gradients show how the CIELCh color 69, 16.575, 41.744 changes by changing the brightness by 10 percent. The first figure shows a shift by +10% for each color and the second figure -10%.

Similar to the brightness gradients but the following saturation gradients show a change of the CIELCh color 69, 16.575, 41.744 by changing the saturation by 10% instead.

 69, 16.575, 41.744

 69, 16.575, 41.744

 100, 16.575,
41.744

 59, 16.575, 41.744

 89, 16.575, 41.744

 49, 16.575, 41.744

 99, 16.575, 41.744

 39, 16.575, 41.744

 29, 16.575, 41.744

 19, 16.575, 41.744

 9, 16.575, 41.744

 0, 16.575, 41.744

 69, 16.575, 41.744

 69, 16.575, 41.744

 65, 24.255, 41.729

 73, 9.479, 41.893

61, 32.541, 41.864

78, 2.928, 42.032

57, 41.415, 42.189

82, 3.129, 222.723

53, 50.785, 42.716

87, 8.745, 223.006

50, 60.420, 43.396

91, 13.971,
223.412

47, 69.786, 44.041

96, 17.785,
202.990

45, 77.726, 44.153

44, 81.300, 44.181

96, 18.693,
198.270

Harmonies

Complementary

The Complementary color scheme is a pair of colors which are on the opposite of each other on the color wheel.



69, 16.575, 41.744



74, 14.088, 223.716

Rectangle

The Rectangle color scheme consists of four colors that form a rectangle on the color wheel.



69, 16.575, 41.744



69, 16.575, 91.744



69, 16.575, 221.744



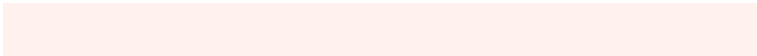
69, 16.575, 271.744

Sweetspot

The Sweet Spot groups the original color and five complimentary colors.



69, 16.574, 41.753



96, 5.358, 42.024



67, 27.776, 332.707



51, 3.490, 42.016



0, 0.000, 0.000



53, 0.007, 296.813

Same Dimension

The Same Dimension uses a secret algorithm to generate beautiful new colors.



69, 16.574, 41.753



84, 25.261, 41.722



75, 19.657, 91.862



40, 3.580, 41.990



36, 70.068, 44.558



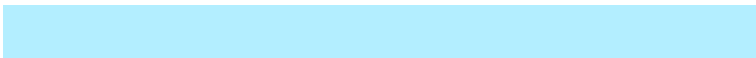
5, 13.997, 32.757

Inverse Universe

The Inverse Universe completely reimagines the original color for something new.



74, 14.088, 223.716



91, 20.569, 224.189



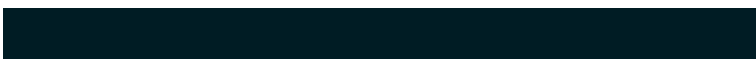
67, 19.824, 278.456



41, 3.383, 222.833



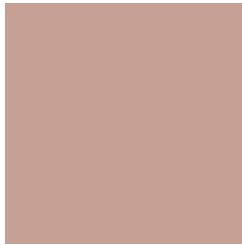
49, 31.919, 240.439



8, 11.125, 230.765

Previews

White Background



This preview shows how the CIELCh color 69, 16.575, 41.744 looks on a white background.

Color Contrast Check

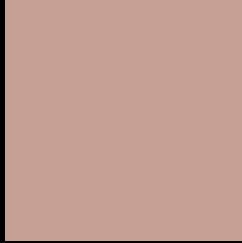
Large Text (above 18pt) WCAG AA × Fail

Any Text WCAG AA × Fail

Large Text (above 18pt) WCAG AAA × Fail

Any Text WCAG AAA × Fail

Black Background



This preview shows how the CIELCh color 69, 16.575, 41.744 looks on a black background.

Color Contrast Check

Large Text (above 18pt) WCAG AA ✓ Pass

Any Text WCAG AA ✓ Pass

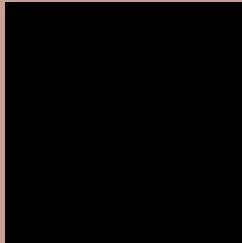
Large Text (above 18pt) WCAG AAA ✓ Pass

Any Text WCAG AAA ✓ Pass

If you want to check with other color combinations, try the [Color Contrast Checker](#).

CIELCh 69, 16.575, 41.744

Background



This preview shows how black text looks on a background with the CIELCh color 69, 16.575, 41.744.



This preview shows how white text looks on a background with the CIELCh color 69, 16.575, 41.744.

Color Blindness Simulation

Color vision deficiency is a very complex topic, and I could not describe the different causes any better than Wikipedia does, so if you want to learn more, you should check out their [article about color blindness](#).

Dichromacy



Original Color

69, 16.575, 41.744

Protanopia

69, 8.640, 90.760

Deuteranopia

69, 14.080, 50.422



Tritanopia
69, 17.839, 359.633

Trichromacy



Original Color
69, 16.575, 41.744

Protanomaly
69, 10.099, 64.391

Deuteranomaly
69, 14.906, 46.370

Tritanomaly
69, 16.233, 13.223

Monochromacy



Original Color
69, 16.575, 41.744

Achromatopsia
70, 0.009, 296.813

Achromatomaly
69, 5.841, 41.713

CSS Examples

Text

The CSS property to change the color of the text to CIELCh 69, 16.575, 41.744 is called "color". The color property can be set on classes, ids or directly on the HTML element.

This example shows how text in the color `rgb(198, 160, 149)` looks like.

```
.text, #text, p{  
    color:rgb(198, 160, 149)  
}
```

If you want to add a text shadow in that color use the text-shadow property, you can generate a text shadow directly with our [CSS Text Shadow Generator](#).

Here you see how black text with a 4 pixel rgb(198, 160, 149) colored shadow looks like.

```
.shadow{ text-shadow: 4px 4px 2px rgb(198, 160, 149) }
```

Border

The CSS property to change the border of an element to CIELCh 69, 16.575, 41.744 is called "border". The border property can be set on classes, ids or directly on the HTML element.

This example shows the color as border, it can be applied via the CSS property "border" or "border-color".

```
.border, #border, table{ border:4px solid rgb(198, 160, 149) }
```

If only the border color should be changed use the property `border-color`.

```
.border{ border-color:rgb(198, 160, 149) }
```

If you want to add a box shadow in that color use:

Here you see how a box with a 4 pixel `rgb(198, 160, 149)` colored shadow looks like.

```
.boxshadow{ -moz-box-shadow:4px 4px 4px 4px rgb(198, 160, 149); -webkit-box-shadow:4px 4px 4px 4px rgb(198, 160, 149); box-shadow:4px 4px 4px 4px rgb(198, 160, 149) }
```

Background

The CSS property to change the background color of an element to CIELCh 69, 16.575, 41.744 is called "background". The background property can be set on classes, ids or directly on the HTML element.

```
.background, #background, body{  
background: rgb(198, 160, 149) }
```

If only the background color should be changed can be used:

```
.background{ background-color: rgb(198,  
160, 149) }
```

This example shows the color as background, it is applied via the CSS property "background".

To optimize and compress your CSS code, you can use our [online CSS compressor and optimizer](#) based on csstidy. If you want to create a linear or radial gradient as background or border, check our [CSS Gradient Generator](#).

Hey! You found this booklet interesting? Support Converting Colors with the new Membership Option!

The pro membership hides all ads, plus gives you double the colors in the color bucket, and more awesome pro features!

[Learn more, Memberships starting at \\$2.50/m!](#)

**Follow me
on Twitter!**

@ConvertingColor