

Converting Colors

CIELCh(69, 19.841, 59.765)

Have a look what the booklet for
CIELCh(69, 19.841, 59.765) contains.

CIELCh(69, 19.979, 59.008)	3
<i>Conversions</i>	4
<i>Details</i>	6
<i>Harmonies</i>	11
<i>Previews</i>	20
<i>Color Blindness Simulation</i>	23
<i>CSS Examples</i>	26

Color

CIELCh(69, 19.979, 59.008)

Conversions

Conversions Part 1

Format	Color
Hex	C6A18A
RGB	198, 161, 138
RGB Percent	78%, 63%, 54%
CMY	0.2234, 0.3685, 0.4587
CMYK	0.00, 0.19, 0.30, 0.22
HSL	23°, 34%, 66%
HSV	23°, 30%, 78%
XYZ	40.6350, 39.3444, 29.5069
YIQ	169.4410, 29.4350, 0.6910

Conversions

Conversions Part 2

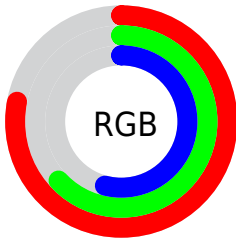
Format	Color
R _Y B	198, 175, 138
Decimal	13017482
CIE Lab	69.00, 10.29, 17.13
CIE LCh	69, 19.979, 59.008
Yxy	39.3444, 0.3711, 0.3594
Android (android.graphics.Color)	4291207562 (0xFFC6A18A)
YUV	169.4410, -15.5004, 25.0462
Hunter-Lab	62.7251, 5.8682, 16.0166

Details

The CIELCh color **69, 19.979, 59.008** is a light color, and the websafe version is hex **CC9999**. A complement of this color would be **70, 17.280, 245.907**, and the grayscale version is **69, 0.009, 296.813**.

A 20% lighter version of the original color is **89, 20.008, 60.263**, and **49, 19.927, 58.222** is the 20% darker color. If you saturate the color by 10%, you get **66, 27.485, 58.158**, and if you desaturate by 10%, it is **73, 12.945, 59.913**.

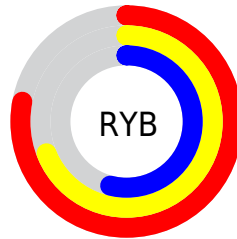
Distribution



Red (78%)

Green (63%)

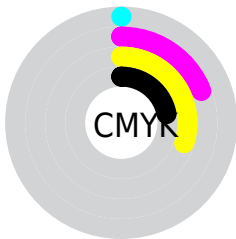
Blue (54%)



Red (78%)

Yellow (69%)

Blue (54%)

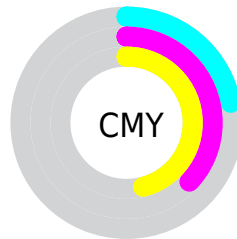


Cyan (0%)

Magenta (19%)

Yellow (30%)

Black (22%)



Cyan (22%)

Magenta (37%)

Yellow (46%)

Brightness & Saturation Gradients

These gradients show how the CIELCh color 69, 19.979, 59.008 changes by changing the brightness by 10 percent. The first figure shows a shift by +10% for each color and the second figure -10%.

Similar to the brightness gradients but the following saturation gradients show a change of the CIELCh color 69, 19.979, 59.008 by changing the saturation by 10% instead.

69, 19.979, 59.008

69, 19.979, 59.008

100, 19.979,
59.008

59, 19.979, 59.008

89, 19.979, 59.008

49, 19.979, 59.008

99, 19.979, 59.008

39, 19.979, 59.008

29, 19.979, 59.008

19, 19.979, 59.008

9, 19.979, 59.008

0, 19.979, 59.008

69, 19.979, 59.008

69, 19.979, 59.008

66, 27.485, 58.158

73, 12.945, 59.913

62, 35.468, 57.353

76, 6.356, 60.819

59, 43.876, 56.592

80, 0.174, 59.253

56, 52.553, 55.832

83, 5.645, 242.898

53, 61.123, 54.947

87, 11.140,
243.820

51, 68.805, 53.649

91, 15.744,
242.065

48, 74.780, 51.880

94, 16.356,
214.073

96, 18.701,
198.269

Harmonies

Complementary

The Complementary color scheme is a pair of colors which are on the opposite of each other on the color wheel.



69, 19.979, 59.008



70, 17.280, 245.907

Rectangle

The Rectangle color scheme consists of four colors that form a rectangle on the color wheel.



69, 19.979, 59.008



69, 19.979, 109.008



69, 19.979, 239.008



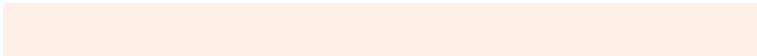
69, 19.979, 289.008

Sweetspot

The Sweet Spot groups the original color and five complimentary colors.



69, 19.979, 59.016



96, 6.794, 60.921



64, 30.343, 340.291



51, 4.744, 60.791



0, 0.000, 0.000



53, 0.007, 296.813

Same Dimension

The Same Dimension uses a secret algorithm to generate beautiful new colors.



69, 19.979, 59.016



84, 29.767, 58.475



77, 28.272, 101.725



40, 3.502, 60.899



40, 64.476, 52.427



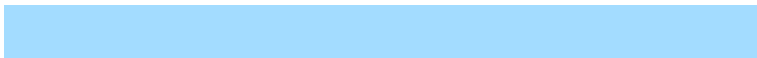
6, 13.179, 44.945

Inverse Universe

The Inverse Universe completely reimagines the original color for something new.



70, 17.280, 245.907



85, 24.871, 247.078



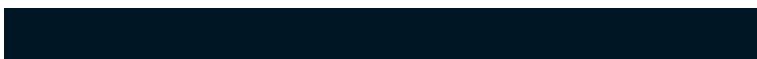
61, 29.838, 289.004



40, 3.367, 242.950



41, 40.529, 269.469



6, 12.258, 257.619

Previews

White Background



This preview shows how the CIELCh color 69, 19.979, 59.008 looks on a white background.

Color Contrast Check

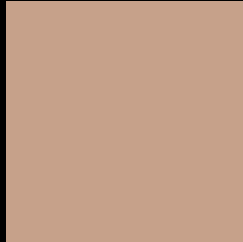
Large Text (above 18pt) WCAG AA × Fail

Any Text WCAG AA × Fail

Large Text (above 18pt) WCAG AAA × Fail

Any Text WCAG AAA × Fail

Black Background



This preview shows how the CIELCh color 69, 19.979, 59.008 looks on a black background.

Color Contrast Check

Large Text (above 18pt) WCAG AA ✓ Pass

Any Text WCAG AA ✓ Pass

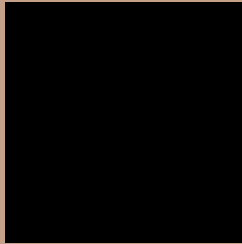
Large Text (above 18pt) WCAG AAA ✓ Pass

Any Text WCAG AAA ✓ Pass

If you want to check with other color combinations, try the [Color Contrast Checker](#).

CIELCh 69, 19.979, 59.008

Background



This preview shows how black text looks on a background with the CIELCh color 69, 19.979, 59.008.



This preview shows how white text looks on a background with the CIELCh color 69, 19.979, 59.008.

Color Blindness Simulation

Color vision deficiency is a very complex topic, and I could not describe the different causes any better than Wikipedia does, so if you want to learn more, you should check out their [article about color blindness](#).

Dichromacy



Original Color

69, 19.979, 59.008

Protanopia

69, 14.761, 92.860

Deuteranopia

69, 19.372, 62.461



Tritanopia
69, 18.205, 0.135

Trichromacy



Original Color
69, 19.979, 59.008

Protanomaly
69, 15.494, 77.147

Deuteranomaly
69, 19.688, 61.647

Tritanomaly
69, 16.657, 20.920

Monochromacy



Original Color
69, 19.979, 59.008

Achromatopsia
69, 0.009, 296.813

Achromatomaly
69, 7.001, 58.306

CSS Examples

Text

The CSS property to change the color of the text to CIELCh 69, 19.979, 59.008 is called "color". The color property can be set on classes, ids or directly on the HTML element.

This example shows how text in the color `rgb(198, 161, 138)` looks like.

```
.text, #text, p{  
    color:rgb(198, 161, 138)  
}
```

If you want to add a text shadow in that color use the text-shadow property, you can generate a text shadow directly with our [CSS Text Shadow Generator](#).

Here you see how black text with a 4 pixel rgb(198, 161, 138) colored shadow looks like.

```
.shadow{ text-shadow: 4px 4px 2px rgb(198, 161, 138) }
```

Border

The CSS property to change the border of an element to CIELCh 69, 19.979, 59.008 is called "border". The border property can be set on classes, ids or directly on the HTML element.

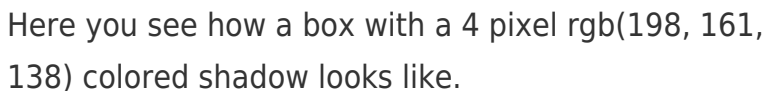
This example shows the color as border, it can be applied via the CSS property "border" or "border-color".

```
.border, #border, table{ border:4px solid rgb(198, 161, 138) }
```

If only the border color should be changed use the property `border-color`.

```
.border{ border-color:rgb(198, 161, 138) }
```

If you want to add a box shadow in that color use:



Here you see how a box with a 4 pixel `rgb(198, 161, 138)` colored shadow looks like.

```
.boxshadow{ -moz-box-shadow:4px 4px 4px 4px rgb(198, 161, 138); -webkit-box-shadow:4px 4px 4px 4px rgb(198, 161, 138); box-shadow:4px 4px 4px 4px rgb(198, 161, 138) }
```

Background

The CSS property to change the background color of an element to CIELCh 69, 19.979, 59.008 is called "background". The background property can be set on classes, ids or directly on the HTML element.

```
.background, #background, body{  
background: rgb(198, 161, 138) }
```

If only the background color should be changed can be used:

```
.background{ background-color: rgb(198,  
161, 138) }
```

This example shows the color as background, it is applied via the CSS property "background".

To optimize and compress your CSS code, you can use our [online CSS compressor and optimizer](#) based on csstidy. If you want to create a linear or radial gradient as background or border, check our [CSS Gradient Generator](#).

Hey! You found this booklet interesting? Support Converting Colors with the new Membership Option!

The pro membership hides all ads, plus gives you double the colors in the color bucket, and more awesome pro features!

[Learn more, Memberships starting at \\$2.50/m!](#)

**Follow me
on Twitter!**

@ConvertingColor