

Converting Colors

CIELCh(69, 22.829, 70.152)

Have a look what the booklet for
CIELCh(69, 22.829, 70.152) contains.

CIELCh(69, 22.764, 69.674)	3
<i>Conversions</i>	4
<i>Details</i>	6
<i>Harmonies</i>	11
<i>Previews</i>	20
<i>Color Blindness Simulation</i>	23
<i>CSS Examples</i>	26

Color

CIELCh(69, 22.764, 69.674)

Conversions

Conversions Part 1

Format	Color
Hex	C4A282
RGB	196, 162, 130
RGB Percent	77%, 64%, 51%
CMY	0.2301, 0.3635, 0.4891
CMYK	0.00, 0.17, 0.34, 0.23
HSL	29°, 36%, 64%
HSV	29°, 34%, 77%
XYZ	39.8696, 39.3444, 26.7139
YIQ	168.5180, 30.5360, -2.7440

Conversions

Conversions Part 2

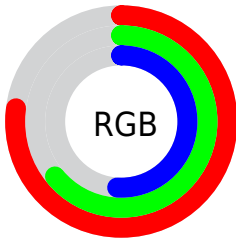
Format	Color
RYB	196, 192, 130
Decimal	12886658
CIELab	69.00, 7.91, 21.35
CIELCh	69, 22.764, 69.674
Yxy	39.3444, 0.3764, 0.3714
Android (android.graphics.Color)	4291076738 (0xFFC4A282)
YUV	168.5180, -18.9894, 24.1017
Hunter-Lab	62.7251, 3.6899, 18.6566

Details

The CIELCh color $69, 22.764, 69.674$ is a light color, and the websafe version is hex $CC9966$. A complement of this color would be $66, 20.541, 259.138$, and the grayscale version is $69, 0.009, 296.813$.

A 20% lighter version of the original color is $89, 22.956, 69.683$, and $49, 22.885, 69.348$ is the 20% darker color. If you saturate the color by 10%, you get $66, 30.274, 68.458$, and if you desaturate by 10%, it is $72, 15.600, 70.896$.

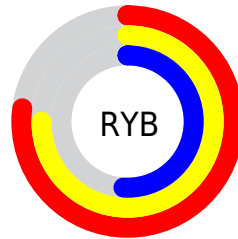
Distribution



Red (77%)

Green (64%)

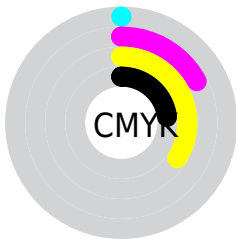
Blue (51%)



Red (77%)

Yellow (75%)

Blue (51%)

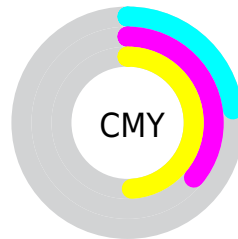


Cyan (0%)

Magenta (17%)

Yellow (34%)

Black (23%)



Cyan (23%)

Magenta (36%)

Yellow (49%)

Brightness & Saturation Gradients

These gradients show how the CIELCh color 69, 22.764, 69.674 changes by changing the brightness by 10 percent. The first figure shows a shift by +10% for each color and the second figure -10%.

Similar to the brightness gradients but the following saturation gradients show a change of the CIELCh color 69, 22.764, 69.674 by changing the saturation by 10% instead.

■ 69, 22.764, 69.674

■ 69, 22.764, 69.674

■ 100, 22.764,
69.674

■ 59, 22.764, 69.674

■ 89, 22.764, 69.674

■ 49, 22.764, 69.674

■ 99, 22.764, 69.674

■ 39, 22.764, 69.674

■ 29, 22.764, 69.674

■ 19, 22.764, 69.674

■ 9, 22.764, 69.674

■ 0, 22.764, 69.674

■ 69, 22.764, 69.674

■ 69, 22.764, 69.674

■ 66, 30.274, 68.458

■ 72, 15.600, 70.896

63, 38.094, 67.226

75, 8.779, 72.092

61, 46.117, 65.961

78, 2.279, 73.170

58, 54.090, 64.593

81, 3.925, 254.605

55, 61.495, 62.967

84, 9.866, 255.693

53, 67.452, 60.784

88, 15.572,
256.788

52, 70.529, 59.192

90, 16.260,
243.453

93, 16.315,
220.549

96, 18.659,
200.937

Harmonies

Complementary

The Complementary color scheme is a pair of colors which are on the opposite of each other on the color wheel.



69, 22.764, 69.674



66, 20.541, 259.138

Rectangle

The Rectangle color scheme consists of four colors that form a rectangle on the color wheel.



69, 22.764, 69.674



69, 22.764, 119.674



69, 22.764, 249.674



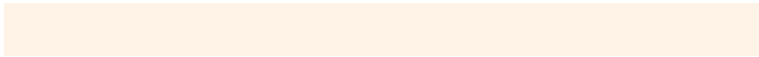
69, 22.764, 299.674

Sweetspot

The Sweet Spot groups the original color and five complimentary colors.



69, 22.764, 69.681



96, 7.894, 72.496



62, 31.389, 345.885



51, 5.405, 72.332



0, 0.000, 0.000



53, 0.007, 296.813

Same Dimension

The Same Dimension uses a secret algorithm to generate beautiful new colors.



69, 22.764, 69.681



85, 34.066, 68.827



78, 34.183, 106.230



39, 3.574, 72.587



43, 60.587, 59.798



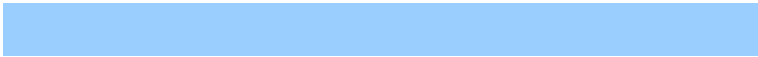
6, 11.470, 56.531

Inverse Universe

The Inverse Universe completely reimagines the original color for something new.



66, 20.541, 259.138



81, 30.006, 260.704



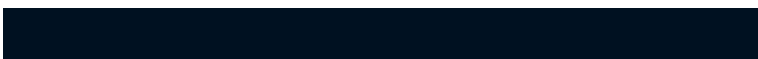
57, 37.044, 293.802



39, 3.490, 255.019



35, 49.081, 282.012



5, 12.615, 268.100

Previews

White Background



This preview shows how the CIELCh color 69, 22.764, 69.674 looks on a white background.

Color Contrast Check

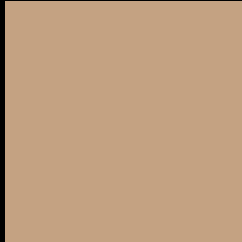
Large Text (above 18pt) WCAG AA × Fail

Any Text WCAG AA × Fail

Large Text (above 18pt) WCAG AAA × Fail

Any Text WCAG AAA × Fail

Black Background



This preview shows how the CIELCh color 69, 22.764, 69.674 looks on a black background.

Color Contrast Check

Large Text (above 18pt) WCAG AA ✓ Pass

Any Text WCAG AA ✓ Pass

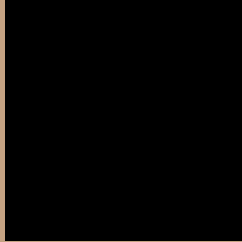
Large Text (above 18pt) WCAG AAA ✓ Pass

Any Text WCAG AAA ✓ Pass

If you want to check with other color combinations, try the [Color Contrast Checker](#).

CIELCh 69, 22.764, 69.674

Background



This preview shows how black text looks on a background with the CIELCh color 69, 22.764, 69.674.



This preview shows how white text looks on a background with the CIELCh color 69, 22.764, 69.674.

Color Blindness Simulation

Color vision deficiency is a very complex topic, and I could not describe the different causes any better than Wikipedia does, so if you want to learn more, you should check out their [article about color blindness](#).

Dichromacy



Original Color

69, 22.764, 69.674

Protanopia

69, 19.619, 94.898

Deuteranopia

69, 23.328, 68.090



Tritanopia
69, 17.839, 359.633

Trichromacy



Original Color
69, 22.764, 69.674

Protanomaly
69, 20.215, 85.378

Deuteranomaly
69, 23.043, 68.872

Tritanomaly
69, 16.141, 28.527

Monochromacy



Original Color
69, 22.764, 69.674

Achromatopsia
69, 0.009, 296.813

Achromatomaly
69, 8.075, 73.760

CSS Examples

Text

The CSS property to change the color of the text to CIELCh 69, 22.764, 69.674 is called "color". The color property can be set on classes, ids or directly on the HTML element.

This example shows how text in the color `rgb(196, 162, 130)` looks like.

```
.text, #text, p{  
    color:rgb(196, 162, 130)  
}
```

If you want to add a text shadow in that color use the text-shadow property, you can generate a text shadow directly with our [CSS Text Shadow Generator](#).

Here you see how black text with a 4 pixel rgb(196, 162, 130) colored shadow looks like.

```
.shadow{ text-shadow: 4px 4px 2px rgb(196, 162, 130) }
```

Border

The CSS property to change the border of an element to CIELCh 69, 22.764, 69.674 is called "border". The border property can be set on classes, ids or directly on the HTML element.

This example shows the color as border, it can be applied via the CSS property "border" or "border-color".

```
.border, #border, table{ border:4px solid rgb(196, 162, 130) }
```

If only the border color should be changed use the property `border-color`.

```
.border{ border-color:rgb(196, 162, 130) }
```

If you want to add a box shadow in that color use:

Here you see how a box with a 4 pixel `rgb(196, 162, 130)` colored shadow looks like.

```
.boxshadow{ -moz-box-shadow:4px 4px 4px  
4px rgb(196, 162, 130); -webkit-box-  
shadow:4px 4px 4px 4px rgb(196, 162, 130);  
box-shadow:4px 4px 4px 4px rgb(196, 162,  
130) }
```

Background

The CSS property to change the background color of an element to CIELCh 69, 22.764, 69.674 is called "background". The background property can be set on classes, ids or directly on the HTML element.

```
.background, #background, body{  
background: rgb(196, 162, 130) }
```

If only the background color should be changed can be used:

```
.background{ background-color: rgb(196,  
162, 130) }
```

This example shows the color as background, it is applied via the CSS property "background".

To optimize and compress your CSS code, you can use our [online CSS compressor and optimizer](#) based on csstidy. If you want to create a linear or radial gradient as background or border, check our [CSS Gradient Generator](#).

Hey! You found this booklet interesting? Support Converting Colors with the new Membership Option!

The pro membership hides all ads, plus gives you double the colors in the color bucket, and more awesome pro features!

[Learn more, Memberships starting at \\$2.50/m!](#)

**Follow me
on Twitter!**

@ConvertingColor