

Converting Colors

CIELCh(69, 22.971, 43.166)

Have a look what the booklet for
CIELCh(69, 22.971, 43.166) contains.

CIELCh(69, 23.003, 43.182)	3
<i>Conversions</i>	4
<i>Details</i>	6
<i>Harmonies</i>	11
<i>Previews</i>	20
<i>Color Blindness Simulation</i>	23
<i>CSS Examples</i>	26

Color

CIELCh(69, 23.003, 43.182)

Conversions

Conversions Part 1

Format	Color
Hex	D09D8D
RGB	208, 157, 141
RGB Percent	82%, 62%, 55%
CMY	0.1851, 0.3851, 0.4478
CMYK	0.00, 0.25, 0.32, 0.19
HSL	14°, 41%, 68%
HSV	14°, 32%, 81%
XYZ	42.7705, 39.3444, 30.4647
YIQ	170.4250, 35.5320, 5.8360

Conversions

Conversions Part 2

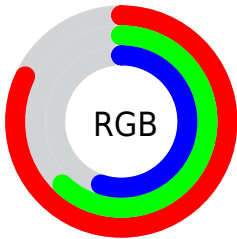
Format	Color
RYB	208, 162, 141
Decimal	13671821
CIELab	69.00, 16.77, 15.74
CIELCh	69, 23.003, 43.182
Yxy	39.3444, 0.3799, 0.3495
Android (android.graphics.Color)	4291861901 (0xFFD09D8D)
YUV	170.4250, -14.5065, 32.9533
Hunter-Lab	62.7251, 11.9452, 15.1113

Details

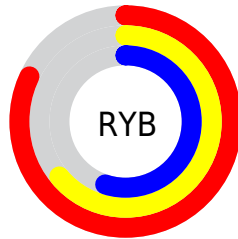
The CIELCh color **69, 23.003, 43.182** is a light color, and the websafe version is hex **CC9999**. A complement of this color would be **75, 18.522, 226.329**, and the grayscale version is **70, 0.009, 296.813**.

A 20% lighter version of the original color is **88, 18.829, 48.203**, and **49, 22.767, 43.870** is the 20% darker color. If you saturate the color by 10%, you get **65, 31.399, 43.189**, and if you desaturate by 10%, it is **73, 15.227, 43.329**.

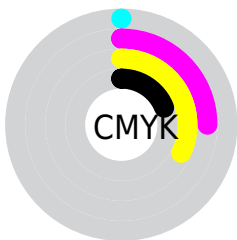
Distribution



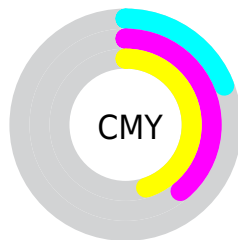
- Red (82%)
- Green (62%)
- Blue (55%)



- Red (82%)
- Yellow (64%)
- Blue (55%)



- Cyan (0%)
- Magenta (25%)
- Yellow (32%)
- Black (19%)



- Cyan (19%)
- Magenta (39%)
- Yellow (45%)


Brightness & Saturation Gradients

These gradients show how the CIELCh color 69, 23.003, 43.182 changes by changing the brightness by 10 percent. The first figure shows a shift by +10% for each color and the second figure -10%.

Similar to the brightness gradients but the following saturation gradients show a change of the CIELCh color 69, 23.003, 43.182 by changing the saturation by 10% instead.

 69, 23.003, 43.182

 69, 23.003, 43.182

 100, 23.003,
43.182

 59, 23.003, 43.182

 89, 23.003, 43.182

 49, 23.003, 43.182

 99, 23.003, 43.182

 39, 23.003, 43.182

 29, 23.003, 43.182

 19, 23.003, 43.182

 9, 23.003, 43.182

 0, 23.003, 43.182

 69, 23.003, 43.182

 69, 23.003, 43.182

 65, 31.399, 43.189

 73, 15.227, 43.329

61, 40.415, 43.360

78, 8.046, 43.564

57, 49.980, 43.717

82, 1.410, 43.600

54, 59.901, 44.229

87, 4.732, 224.522

51, 69.717, 44.745

92, 10.437,
224.922

48, 78.408, 44.859

96, 14.644,
205.203

46, 83.810, 44.604

97, 15.693,
198.462

Harmonies

Complementary

The Complementary color scheme is a pair of colors which are on the opposite of each other on the color wheel.



69, 23.003, 43.182



75, 18.522, 226.329

Rectangle

The Rectangle color scheme consists of four colors that form a rectangle on the color wheel.



69, 23.003, 43.182



69, 23.003, 93.182



69, 23.003, 223.182



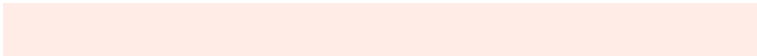
69, 23.003, 273.182

Sweetspot

The Sweet Spot groups the original color and five complimentary colors.



69, 23.002, 43.189



95, 7.699, 43.618



67, 37.139, 333.880



50, 5.283, 43.582



0, 0.000, 0.000



53, 0.007, 296.813

Same Dimension

The Same Dimension uses a secret algorithm to generate beautiful new colors.



69, 23.002, 43.189



80, 33.850, 43.173



77, 27.159, 92.107



42, 3.708, 43.635



38, 71.265, 45.021



6, 17.406, 32.928

Inverse Universe

The Inverse Universe completely reimagines the original color for something new.



75, 18.522, 226.329



88, 25.734, 227.175



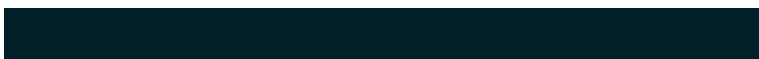
66, 27.649, 280.958



43, 3.506, 224.609



50, 33.075, 243.576



10, 12.261, 233.657

Previews

White Background



This preview shows how the CIELCh color 69, 23.003, 43.182 looks on a white background.

Color Contrast Check

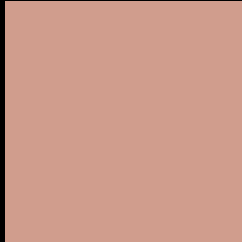
Large Text (above 18pt) WCAG AA × Fail

Any Text WCAG AA × Fail

Large Text (above 18pt) WCAG AAA × Fail

Any Text WCAG AAA × Fail

Black Background



This preview shows how the CIE LCh color 69, 23.003, 43.182 looks on a black background.

Color Contrast Check

Large Text (above 18pt) WCAG AA ✓ Pass

Any Text WCAG AA ✓ Pass

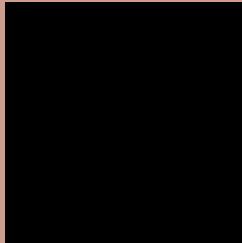
Large Text (above 18pt) WCAG AAA ✓ Pass

Any Text WCAG AAA ✓ Pass

If you want to check with other color combinations, try the [Color Contrast Checker](#).

CIELCh 69, 23.003, 43.182

Background



This preview shows how black text looks on a background with the CIELCh color 69, 23.003, 43.182.

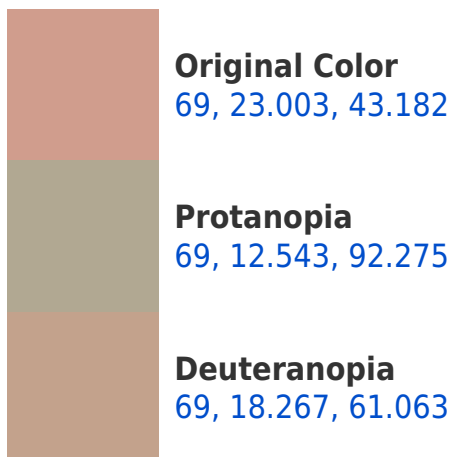


This preview shows how white text looks on a background with the CIELCh color 69, 23.003, 43.182.

Color Blindness Simulation

Color vision deficiency is a very complex topic, and I could not describe the different causes any better than Wikipedia does, so if you want to learn more, you should check out their [article about color blindness](#).

Dichromacy





Tritanopia
69, 23.177, 5.396

Trichromacy



Original Color
69, 23.003, 43.182

Protanomaly
69, 14.708, 67.640

Deuteranomaly
69, 19.962, 53.460

Tritanomaly
69, 21.994, 18.674

Monochromacy



Original Color
69, 23.003, 43.182

Achromatopsia
70, 0.009, 296.813

Achromatomaly
69, 8.130, 43.661

CSS Examples

Text

The CSS property to change the color of the text to CIELCh 69, 23.003, 43.182 is called "color". The color property can be set on classes, ids or directly on the HTML element.

This example shows how text in the color `rgb(208, 157, 141)` looks like.

```
.text, #text, p{  
    color:rgb(208, 157, 141)  
}
```

If you want to add a text shadow in that color use the text-shadow property, you can generate a text shadow directly with our [CSS Text Shadow Generator](#).

Here you see how black text with a 4 pixel rgb(208, 157, 141) colored shadow looks like.

```
.shadow{ text-shadow: 4px 4px 2px rgb(208, 157, 141) }
```

Border

The CSS property to change the border of an element to CIELCh 69, 23.003, 43.182 is called "border". The border property can be set on classes, ids or directly on the HTML element.

This example shows the color as border, it can be applied via the CSS property "border" or "border-color".

```
.border, #border, table{ border:4px solid rgb(208, 157, 141) }
```

If only the border color should be changed use the property border-color.

```
.border{ border-color:rgb(208, 157, 141) }
```

If you want to add a box shadow in that color use:

Here you see how a box with a 4 pixel rgb(208, 157, 141) colored shadow looks like.

```
.boxshadow{ -moz-box-shadow:4px 4px 4px  
4px rgb(208, 157, 141); -webkit-box-  
shadow:4px 4px 4px 4px rgb(208, 157, 141);  
box-shadow:4px 4px 4px 4px rgb(208, 157,  
141) }
```

Background

The CSS property to change the background color of an element to CIELCh 69, 23.003, 43.182 is called "background". The background property can be set on classes, ids or directly on the HTML element.

```
.background, #background, body{  
background: rgb(208, 157, 141) }
```

If only the background color should be changed can be used:

```
.background{ background-color: rgb(208,  
157, 141) }
```

This example shows the color as background, it is applied via the CSS property "background".

To optimize and compress your CSS code, you can use our [online CSS compressor and optimizer](#) based on csstidy. If you want to create a linear or radial gradient as background or border, check our [CSS Gradient Generator](#).

Hey! You found this booklet interesting? Support Converting Colors with the new Membership Option!

The pro membership hides all ads, plus gives you double the colors in the color bucket, and more awesome pro features!

[Learn more, Memberships starting at \\$2.50/m!](#)

**Follow me
on Twitter!**

@ConvertingColor