

Converting Colors

CIELCh(69, 23.005, 35.824)

Have a look what the booklet for
CIELCh(69, 23.005, 35.824) contains.

CIELCh(69, 23.075, 36.222)	3
<i>Conversions</i>	4
<i>Details</i>	6
<i>Harmonies</i>	11
<i>Previews</i>	20
<i>Color Blindness Simulation</i>	23
<i>CSS Examples</i>	26

Color

CIELCh(69, 23.075, 36.222)

Conversions

Conversions Part 1

Format	Color
Hex	D29C91
RGB	210, 156, 145
RGB Percent	82%, 61%, 57%
CMY	0.1779, 0.3896, 0.4327
CMYK	0.00, 0.26, 0.31, 0.18
HSL	10°, 42%, 69%
HSV	10°, 31%, 82%
XYZ	43.3903, 39.3444, 31.9599
YIQ	170.8920, 35.7150, 8.0270

Conversions

Conversions Part 2

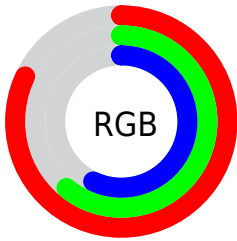
Format	Color
R _Y B	210, 158, 145
Decimal	13802641
CIE Lab	69.00, 18.62, 13.64
CIE LCh	69, 23.075, 36.222
Yxy	39.3444, 0.3783, 0.3430
Android (android.graphics.Color)	4291992721 (0xFFD29C91)
YUV	170.8920, -12.7648, 34.2977
Hunter-Lab	62.7251, 13.7090, 13.6979

Details

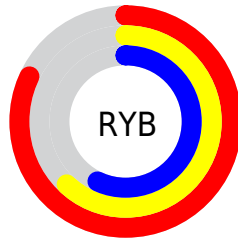
The CIELCh color **69, 23.075, 36.222** is a light color, and the websafe version is hex **CC9999**. A complement of this color would be **77, 18.533, 216.916**, and the grayscale version is **70, 0.009, 296.813**.

A 20% lighter version of the original color is **88, 17.976, 40.676**, and **49, 23.057, 34.965** is the 20% darker color. If you saturate the color by 10%, you get **64, 31.810, 36.662**, and if you desaturate by 10%, it is **74, 14.986, 35.982**.

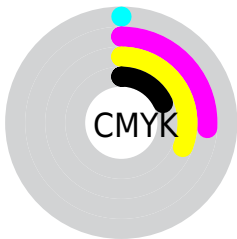
Distribution



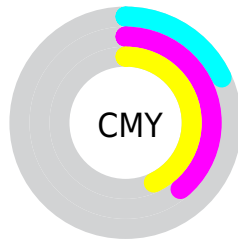
- Red (82%)
- Green (61%)
- Blue (57%)



- Red (82%)
- Yellow (62%)
- Blue (57%)



- Cyan (0%)
- Magenta (26%)
- Yellow (31%)
- Black (18%)



- Cyan (18%)
- Magenta (39%)
- Yellow (43%)

Brightness & Saturation Gradients

These gradients show how the CIELCh color 69, 23.075, 36.222 changes by changing the brightness by 10 percent. The first figure shows a shift by +10% for each color and the second figure -10%.

Similar to the brightness gradients but the following saturation gradients show a change of the CIELCh color 69, 23.075, 36.222 by changing the saturation by 10% instead.

69, 23.075, 36.222

69, 23.075, 36.222

100, 23.075,
36.222

59, 23.075, 36.222

89, 23.075, 36.222

49, 23.075, 36.222

99, 23.075, 36.222

39, 23.075, 36.222

29, 23.075, 36.222

19, 23.075, 36.222

9, 23.075, 36.222

0, 23.075, 36.222

69, 23.075, 36.222

69, 23.075, 36.222

64, 31.810, 36.662

74, 14.986, 35.982

60, 41.178, 37.331

79, 7.527, 35.863

56, 51.092, 38.273

84, 0.650, 35.098

53, 61.350, 39.484

89, 5.697, 216.193

50, 71.511, 40.842

94, 11.572,
216.325

47, 80.595, 41.943

97, 15.114,
198.499

45, 86.874, 42.452

Harmonies

Complementary

The Complementary color scheme is a pair of colors which are on the opposite of each other on the color wheel.



69, 23.075, 36.222



77, 18.533, 216.916

Rectangle

The Rectangle color scheme consists of four colors that form a rectangle on the color wheel.



69, 23.075, 36.222



69, 23.075, 86.222



69, 23.075, 216.222



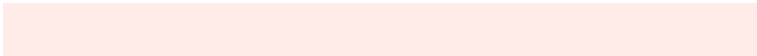
69, 23.075, 266.222

Sweetspot

The Sweet Spot groups the original color and five complimentary colors.



69, 23.074, 36.228



95, 7.169, 35.846



68, 37.673, 331.312



50, 5.012, 35.860



0, 0.000, 0.000



53, 0.007, 296.813

Same Dimension

The Same Dimension uses a secret algorithm to generate beautiful new colors.



69, 23.074, 36.228



79, 33.169, 36.482



77, 24.788, 87.133



41, 3.852, 35.849



36, 73.414, 42.769



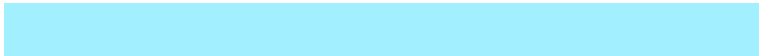
6, 18.084, 28.572

Inverse Universe

The Inverse Universe completely reimagines the original color for something new.



77, 18.533, 216.916



90, 25.258, 217.316



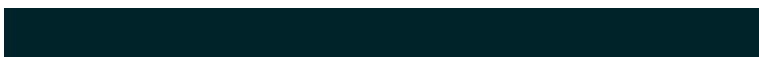
68, 24.621, 275.950



43, 3.629, 216.201



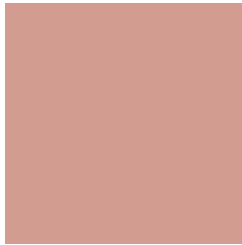
54, 31.900, 228.598



11, 12.256, 221.562

Previews

White Background



This preview shows how the CIELCh color 69, 23.075, 36.222 looks on a white background.

Color Contrast Check

Large Text (above 18pt) WCAG AA × Fail

Any Text WCAG AA × Fail

Large Text (above 18pt) WCAG AAA × Fail

Any Text WCAG AAA × Fail

Black Background



This preview shows how the CIE LCh color 69, 23.075, 36.222 looks on a black background.

Color Contrast Check

Large Text (above 18pt) WCAG AA ✓ Pass

Any Text WCAG AA ✓ Pass

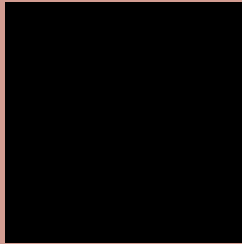
Large Text (above 18pt) WCAG AAA ✓ Pass

Any Text WCAG AAA ✓ Pass

If you want to check with other color combinations, try the [Color Contrast Checker](#).

CIELCh 69, 23.075, 36.222

Background



This preview shows how black text looks on a background with the CIELCh color 69, 23.075, 36.222.



This preview shows how white text looks on a background with the CIELCh color 69, 23.075, 36.222.

Color Blindness Simulation

Color vision deficiency is a very complex topic, and I could not describe the different causes any better than Wikipedia does, so if you want to learn more, you should check out their [article about color blindness](#).

Dichromacy



Original Color

69, 23.075, 36.222

Protanopia

69, 9.807, 90.414

Deuteranopia

69, 16.805, 58.147



Tritanopia
69, 23.856, 7.307

Trichromacy



Original Color
69, 23.075, 36.222

Protanomaly
69, 12.699, 60.019

Deuteranomaly
69, 18.685, 48.296

Tritanomaly
69, 22.785, 17.501

Monochromacy



Original Color
69, 23.075, 36.222

Achromatopsia
70, 0.009, 296.813

Achromatomaly
69, 8.102, 35.603

CSS Examples

Text

The CSS property to change the color of the text to CIELCh 69, 23.075, 36.222 is called "color". The color property can be set on classes, ids or directly on the HTML element.

This example shows how text in the color `rgb(210, 156, 145)` looks like.

```
.text, #text, p{  
    color:rgb(210, 156, 145)  
}
```

If you want to add a text shadow in that color use the text-shadow property, you can generate a text shadow directly with our [CSS Text Shadow Generator](#).

Here you see how black text with a 4 pixel rgb(210, 156, 145) colored shadow looks like.

```
.shadow{ text-shadow: 4px 4px 2px rgb(210, 156, 145) }
```

Border

The CSS property to change the border of an element to CIELCh 69, 23.075, 36.222 is called "border". The border property can be set on classes, ids or directly on the HTML element.

This example shows the color as border, it can be applied via the CSS property "border" or "border-color".

```
.border, #border, table{ border:4px solid rgb(210, 156, 145) }
```

If only the border color should be changed use the property `border-color`.

```
.border{ border-color:rgb(210, 156, 145) }
```

If you want to add a box shadow in that color use:

Here you see how a box with a 4 pixel `rgb(210, 156, 145)` colored shadow looks like.

```
.boxshadow{ -moz-box-shadow:4px 4px 4px  
4px rgb(210, 156, 145); -webkit-box-  
shadow:4px 4px 4px 4px rgb(210, 156, 145);  
box-shadow:4px 4px 4px 4px rgb(210, 156,  
145) }
```

Background

The CSS property to change the background color of an element to CIELCh 69, 23.075, 36.222 is called "background". The background property can be set on classes, ids or directly on the HTML element.

```
.background, #background, body{  
background: rgb(210, 156, 145) }
```

If only the background color should be changed can be used:

```
.background{ background-color: rgb(210,  
156, 145) }
```

This example shows the color as background, it is applied via the CSS property "background".

To optimize and compress your CSS code, you can use our [online CSS compressor and optimizer](#) based on csstidy. If you want to create a linear or radial gradient as background or border, check our [CSS Gradient Generator](#).

Hey! You found this booklet interesting? Support Converting Colors with the new Membership Option!

The pro membership hides all ads, plus gives you double the colors in the color bucket, and more awesome pro features!

[Learn more, Memberships starting at \\$2.50/m!](#)

**Follow me
on Twitter!**

@ConvertingColor