

Converting Colors

CIELCh(69, 23.398, 21.031)

Have a look what the booklet for
CIELCh(69, 23.398, 21.031) contains.

CIELCh(69, 23.322, 21.597)	3
<i>Conversions</i>	4
<i>Details</i>	6
<i>Harmonies</i>	11
<i>Previews</i>	20
<i>Color Blindness Simulation</i>	23
<i>CSS Examples</i>	26

Color

CIELCh(69, 23.322, 21.597)

Conversions

Conversions Part 1

Format	Color
Hex	D49A9A
RGB	212, 154, 154
RGB Percent	83%, 60%, 60%
CMY	0.1694, 0.3968, 0.3968
CMYK	0.00, 0.27, 0.27, 0.17
HSL	0°, 40%, 72%
HSV	0°, 27%, 83%
XYZ	44.4364, 39.3444, 35.7437
YIQ	171.3420, 34.5680, 12.2960

Conversions

Conversions Part 2

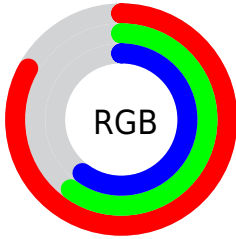
Format	Color
R _Y B	212, 154, 154
Decimal	13933210
CIE Lab	69.00, 21.68, 8.58
CIE LCh	69, 23.322, 21.597
Yxy	39.3444, 0.3718, 0.3292
Android (android.graphics.Color)	4292123290 (0xFFD49A9A)
YUV	171.3420, -8.5496, 35.6571
Hunter-Lab	62.7251, 16.6859, 10.1213

Details

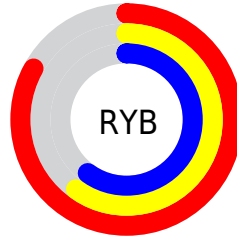
The CIELCh color **69, 23.322, 21.597** is a light color, and the websafe version is hex **CC9999**. A complement of this color would be **81, 19.377, 198.048**, and the grayscale version is **70, 0.009, 296.813**.

A 20% lighter version of the original color is **88, 17.288, 22.374**, and **49, 23.460, 21.014** is the 20% darker color. If you saturate the color by 10%, you get **64, 33.015, 22.908**, and if you desaturate by 10%, it is **75, 14.242, 20.593**.

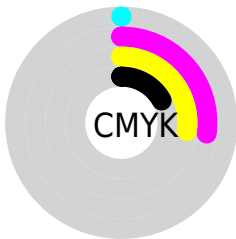
Distribution



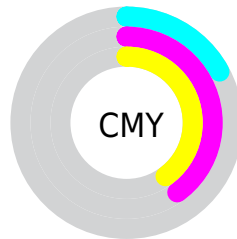
- Red (83%)
- Green (60%)
- Blue (60%)



- Red (83%)
- Yellow (60%)
- Blue (60%)



- Cyan (0%)
- Magenta (27%)
- Yellow (27%)
- Black (17%)



- Cyan (17%)
- Magenta (40%)
- Yellow (40%)

Brightness & Saturation Gradients

These gradients show how the CIELCh color 69, 23.322, 21.597 changes by changing the brightness by 10 percent. The first figure shows a shift by +10% for each color and the second figure -10%.

Similar to the brightness gradients but the following saturation gradients show a change of the CIELCh color 69, 23.322, 21.597 by changing the saturation by 10% instead.

69, 23.322, 21.597

69, 23.322, 21.597

100, 23.322,
21.597

59, 23.322, 21.597

89, 23.322, 21.597

49, 23.322, 21.597

99, 23.322, 21.597

39, 23.322, 21.597

29, 23.322, 21.597

19, 23.322, 21.597

9, 23.322, 21.597

0, 23.322, 21.597

69, 23.322, 21.597

69, 23.322, 21.597

64, 33.015, 22.908

75, 14.242, 20.593

■ 59, 43.220, 24.613

■ 80, 5.812, 19.769

■ 54, 53.729, 26.828

■ 86, 1.985, 199.563

■ 50, 64.234, 29.642

■ 92, 9.195, 198.867

■ 47, 74.304, 33.020

■ 97, 14.430,
198.544

■ 45, 83.204, 36.578

■ 44, 89.459, 39.339

■ 44, 90.910, 40.001

Harmonies

Complementary

The Complementary color scheme is a pair of colors which are on the opposite of each other on the color wheel.



69, 23.322, 21.597



81, 19.377, 198.048

Rectangle

The Rectangle color scheme consists of four colors that form a rectangle on the color wheel.



69, 23.322, 21.597



69, 23.322, 71.597



69, 23.322, 201.597



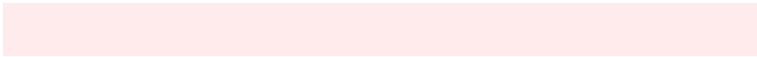
69, 23.322, 251.597

Sweetspot

The Sweet Spot groups the original color and five complimentary colors.



69, 23.320, 21.602



94, 7.348, 19.826



71, 37.637, 325.925



49, 5.254, 19.947



0, 0.000, 0.000



53, 0.007, 296.813

Same Dimension

The Same Dimension uses a secret algorithm to generate beautiful new colors.



69, 23.320, 21.602



78, 33.408, 22.340



76, 19.549, 72.019



42, 4.549, 19.933



35, 77.348, 39.899



5, 21.999, 19.769

Inverse Universe

The Inverse Universe completely reimagines the original color for something new.



81, 19.377, 198.048



95, 26.522, 197.786



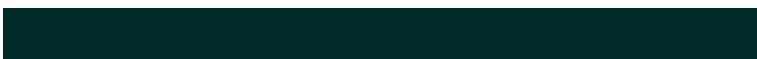
73, 18.139, 259.618



44, 4.287, 198.977



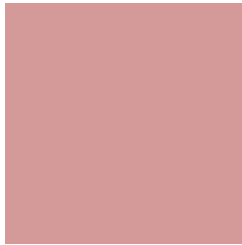
63, 37.120, 196.393



15, 14.558, 196.392

Previews

White Background



This preview shows how the CIELCh color 69, 23.322, 21.597 looks on a white background.

Color Contrast Check

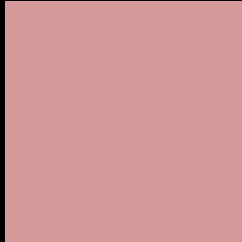
Large Text (above 18pt) WCAG AA × Fail

Any Text WCAG AA × Fail

Large Text (above 18pt) WCAG AAA × Fail

Any Text WCAG AAA × Fail

Black Background



This preview shows how the CIELCh color 69, 23.322, 21.597 looks on a black background.

Color Contrast Check

Large Text (above 18pt) WCAG AA ✓ Pass

Any Text WCAG AA ✓ Pass

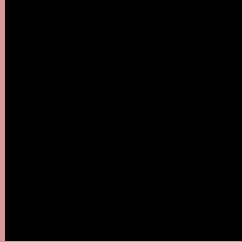
Large Text (above 18pt) WCAG AAA ✓ Pass

Any Text WCAG AAA ✓ Pass

If you want to check with other color combinations, try the [Color Contrast Checker](#).

CIELCh 69, 23.322, 21.597

Background



This preview shows how black text looks on a background with the CIELCh color 69, 23.322, 21.597.



This preview shows how white text looks on a background with the CIELCh color 69, 23.322, 21.597.

Color Blindness Simulation

Color vision deficiency is a very complex topic, and I could not describe the different causes any better than Wikipedia does, so if you want to learn more, you should check out their [article about color blindness](#).

Dichromacy



Original Color

69, 23.322, 21.597

Protanopia

69, 4.271, 82.948

Deuteranopia

69, 12.750, 48.211



Tritanopia
69, 24.740, 6.645

Trichromacy



Original Color
69, 23.322, 21.597

Protanomaly
69, 9.835, 36.233

Deuteranomaly
69, 16.147, 34.321

Tritanomaly
69, 24.038, 12.698

Monochromacy



Original Color
69, 23.322, 21.597

Achromatopsia
70, 0.009, 296.813

Achromatomaly
70, 8.126, 20.070

CSS Examples

Text

The CSS property to change the color of the text to CIELCh 69, 23.322, 21.597 is called "color". The color property can be set on classes, ids or directly on the HTML element.

This example shows how text in the color `rgb(212, 154, 154)` looks like.

```
.text, #text, p{  
    color:rgb(212, 154, 154)  
}
```

If you want to add a text shadow in that color use the text-shadow property, you can generate a text shadow directly with our [CSS Text Shadow Generator](#).

Here you see how black text with a 4 pixel rgb(212, 154, 154) colored shadow looks like.

```
.shadow{ text-shadow: 4px 4px 2px rgb(212, 154, 154) }
```

Border

The CSS property to change the border of an element to CIELCh 69, 23.322, 21.597 is called "border". The border property can be set on classes, ids or directly on the HTML element.

This example shows the color as border, it can be applied via the CSS property "border" or "border-color".

```
.border, #border, table{ border:4px solid rgb(212, 154, 154) }
```

If only the border color should be changed use the property border-color.

```
.border{ border-color:rgb(212, 154, 154) }
```

If you want to add a box shadow in that color use:

Here you see how a box with a 4 pixel rgb(212, 154, 154) colored shadow looks like.

```
.boxshadow{ -moz-box-shadow:4px 4px 4px  
4px rgb(212, 154, 154); -webkit-box-  
shadow:4px 4px 4px 4px rgb(212, 154, 154);  
box-shadow:4px 4px 4px 4px rgb(212, 154,  
154) }
```

Background

The CSS property to change the background color of an element to CIELCh 69, 23.322, 21.597 is called "background". The background property can be set on classes, ids or directly on the HTML element.

```
.background, #background, body{  
background: rgb(212, 154, 154) }
```

If only the background color should be changed can be used:

```
.background{ background-color: rgb(212,  
154, 154) }
```

This example shows the color as background, it is applied via the CSS property "background".

To optimize and compress your CSS code, you can use our [online CSS compressor and optimizer](#) based on csstidy. If you want to create a linear or radial gradient as background or border, check our [CSS Gradient Generator](#).

Hey! You found this booklet interesting? Support Converting Colors with the new Membership Option!

The pro membership hides all ads, plus gives you double the colors in the color bucket, and more awesome pro features!

[Learn more, Memberships starting at \\$2.50/m!](#)

**Follow me
on Twitter!**

@ConvertingColor