

Converting Colors

CIELCh(69, 23.813, 31.660)

Have a look what the booklet for
CIELCh(69, 23.813, 31.660) contains.

CIELCh(69, 23.790, 31.925)	3
<i>Conversions</i>	4
<i>Details</i>	6
<i>Harmonies</i>	11
<i>Previews</i>	20
<i>Color Blindness Simulation</i>	23
<i>CSS Examples</i>	26

Color

CIELCh(69, 23.790, 31.925)

Conversions

Conversions Part 1

Format	Color
Hex	D49B93
RGB	212, 155, 147
RGB Percent	83%, 61%, 58%
CMY	0.1703, 0.3936, 0.4250
CMYK	0.00, 0.27, 0.31, 0.17
HSL	7°, 43%, 70%
HSV	7°, 31%, 83%
XYZ	43.9254, 39.3444, 32.7270
YIQ	171.1310, 36.5400, 9.5960

Conversions

Conversions Part 2

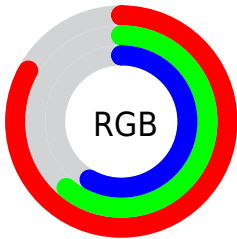
Format	Color
R _{YB}	212, 156, 147
Decimal	13933459
CIE Lab	69.00, 20.19, 12.58
CIE LCh	69, 23.790, 31.925
Yxy	39.3444, 0.3787, 0.3392
Android (android.graphics.Color)	4292123539 (0xFFD49B93)
YUV	171.1310, -11.8966, 35.8421
Hunter-Lab	62.7251, 15.2318, 12.9729

Details

The CIELCh color **69, 23.790, 31.925** is a light color, and the websafe version is hex **CC9999**. A complement of this color would be **78, 19.105, 211.149**, and the grayscale version is **70, 0.009, 296.813**.

A 20% lighter version of the original color is **88, 17.787, 35.724**, and **49, 24.036, 31.854** is the 20% darker color. If you saturate the color by 10%, you get **64, 32.845, 32.651**, and if you desaturate by 10%, it is **74, 15.386, 31.433**.

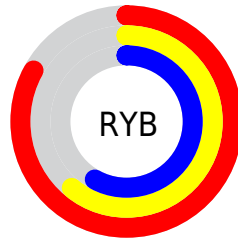
Distribution



Red (83%)

Green (61%)

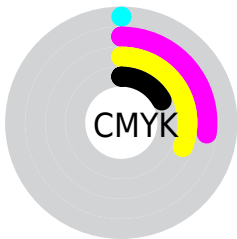
Blue (58%)



Red (83%)

Yellow (61%)

Blue (58%)

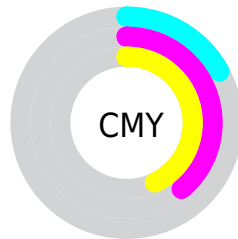


Cyan (0%)

Magenta (27%)

Yellow (31%)

Black (17%)



Cyan (17%)

Magenta (39%)

Yellow (43%)

Brightness & Saturation Gradients

These gradients show how the CIELCh color 69, 23.790, 31.925 changes by changing the brightness by 10 percent. The first figure shows a shift by +10% for each color and the second figure -10%.

Similar to the brightness gradients but the following saturation gradients show a change of the CIELCh color 69, 23.790, 31.925 by changing the saturation by 10% instead.

69, 23.790, 31.925

69, 23.790, 31.925

100, 23.790,
31.925

59, 23.790, 31.925

89, 23.790, 31.925

49, 23.790, 31.925

99, 23.790, 31.925

39, 23.790, 31.925

29, 23.790, 31.925

19, 23.790, 31.925

9, 23.790, 31.925

0, 23.790, 31.925

69, 23.790, 31.925

69, 23.790, 31.925

64, 32.845, 32.651

74, 15.386, 31.433

60, 42.519, 33.656

79, 7.630, 31.087

56, 52.698, 34.999

84, 0.480, 29.785

52, 63.152, 36.692

90, 6.115, 211.013

49, 73.424, 38.623

95, 12.213,
210.969

47, 82.526, 40.364

97, 14.499,
198.539

45, 88.798, 41.440

Harmonies

Complementary

The Complementary color scheme is a pair of colors which are on the opposite of each other on the color wheel.



69, 23.790, 31.925



78, 19.105, 211.149

Rectangle

The Rectangle color scheme consists of four colors that form a rectangle on the color wheel.



69, 23.790, 31.925



69, 23.790, 81.925



69, 23.790, 211.925



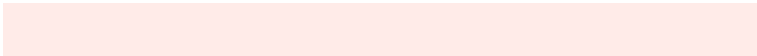
69, 23.790, 261.925

Sweetspot

The Sweet Spot groups the original color and five complimentary colors.



69, 23.788, 31.931



94, 7.416, 31.037



69, 38.922, 329.596



50, 5.184, 31.083



0, 0.000, 0.000



53, 0.007, 296.813

Same Dimension

The Same Dimension uses a secret algorithm to generate beautiful new colors.



69, 23.788, 31.931



78, 34.281, 32.385



77, 23.760, 82.900



41, 3.985, 31.047



36, 74.536, 41.664



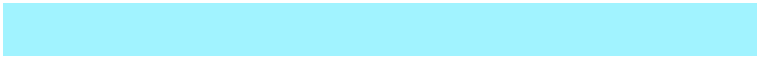
5, 18.576, 25.884

Inverse Universe

The Inverse Universe completely reimagines the original color for something new.



78, 19.105, 211.149



91, 26.035, 211.348



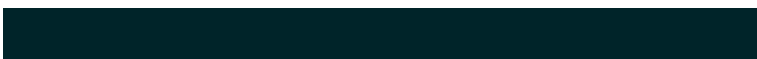
70, 23.119, 271.797



43, 3.750, 211.002



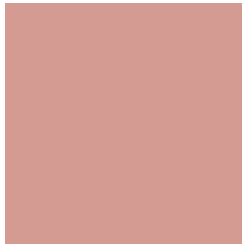
56, 32.236, 218.763



12, 12.516, 213.907

Previews

White Background



This preview shows how the CIELCh color 69, 23.790, 31.925 looks on a white background.

Color Contrast Check

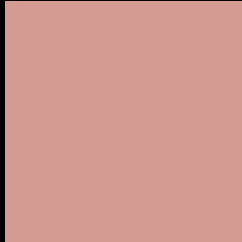
Large Text (above 18pt) WCAG AA × Fail

Any Text WCAG AA × Fail

Large Text (above 18pt) WCAG AAA × Fail

Any Text WCAG AAA × Fail

Black Background



This preview shows how the CIE LCh color 69, 23.790, 31.925 looks on a black background.

Color Contrast Check

Large Text (above 18pt) WCAG AA ✓ Pass

Any Text WCAG AA ✓ Pass

Large Text (above 18pt) WCAG AAA ✓ Pass

Any Text WCAG AAA ✓ Pass

If you want to check with other color combinations, try the [Color Contrast Checker](#).

CIELCh 69, 23.790, 31.925

Background



This preview shows how black text looks on a background with the CIELCh color 69, 23.790, 31.925.

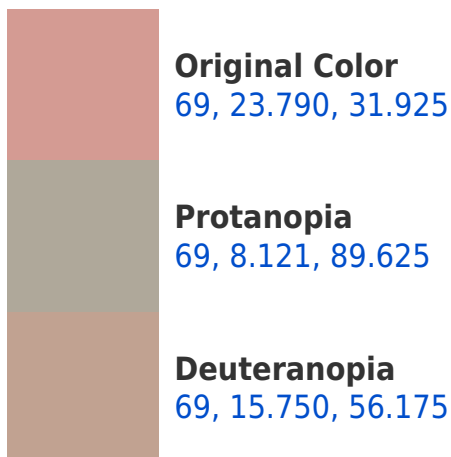



This preview shows how white text looks on a background with the CIELCh color 69, 23.790, 31.925.

Color Blindness Simulation

Color vision deficiency is a very complex topic, and I could not describe the different causes any better than Wikipedia does, so if you want to learn more, you should check out their [article about color blindness](#).

Dichromacy





Tritanopia
69, 24.740, 6.645

Trichromacy



Original Color
69, 23.790, 31.925

Protanomaly
69, 11.995, 53.115

Deuteranomaly
69, 18.258, 43.447

Tritanomaly
69, 23.608, 15.120

Monochromacy



Original Color
69, 23.790, 31.925

Achromatopsia
70, 0.009, 296.813

Achromatomaly
69, 8.343, 31.339

CSS Examples

Text

The CSS property to change the color of the text to CIELCh 69, 23.790, 31.925 is called "color". The color property can be set on classes, ids or directly on the HTML element.

This example shows how text in the color `rgb(212, 155, 147)` looks like.

```
.text, #text, p{  
    color:rgb(212, 155, 147)  
}
```

If you want to add a text shadow in that color use the text-shadow property, you can generate a text shadow directly with our [CSS Text Shadow Generator](#).

Here you see how black text with a 4 pixel rgb(212, 155, 147) colored shadow looks like.

```
.shadow{ text-shadow: 4px 4px 2px rgb(212, 155, 147) }
```

Border

The CSS property to change the border of an element to CIELCh 69, 23.790, 31.925 is called "border". The border property can be set on classes, ids or directly on the HTML element.

This example shows the color as border, it can be applied via the CSS property "border" or "border-color".

```
.border, #border, table{ border:4px solid rgb(212, 155, 147) }
```

If only the border color should be changed use the property border-color.

```
.border{ border-color:rgb(212, 155, 147) }
```

If you want to add a box shadow in that color use:

Here you see how a box with a 4 pixel rgb(212, 155, 147) colored shadow looks like.

```
.boxshadow{ -moz-box-shadow:4px 4px 4px  
4px rgb(212, 155, 147); -webkit-box-  
shadow:4px 4px 4px 4px rgb(212, 155, 147);  
box-shadow:4px 4px 4px 4px rgb(212, 155,  
147) }
```

Background

The CSS property to change the background color of an element to CIELCh 69, 23.790, 31.925 is called "background". The background property can be set on classes, ids or directly on the HTML element.

```
.background, #background, body{  
background: rgb(212, 155, 147) }
```

If only the background color should be changed can be used:

```
.background{ background-color: rgb(212,  
155, 147) }
```

This example shows the color as background, it is applied via the CSS property "background".

To optimize and compress your CSS code, you can use our [online CSS compressor and optimizer](#) based on csstidy. If you want to create a linear or radial gradient as background or border, check our [CSS Gradient Generator](#).

Hey! You found this booklet interesting? Support Converting Colors with the new Membership Option!

The pro membership hides all ads, plus gives you double the colors in the color bucket, and more awesome pro features!

[Learn more, Memberships starting at \\$2.50/m!](#)

**Follow me
on Twitter!**

@ConvertingColor