

Converting Colors

CIELCh(69, 25.559, 71.542)

Have a look what the booklet for
CIELCh(69, 25.559, 71.542) contains.

CIELCh(69, 25.557, 71.546)	3
<i>Conversions</i>	4
<i>Details</i>	6
<i>Harmonies</i>	11
<i>Previews</i>	20
<i>Color Blindness Simulation</i>	23
<i>CSS Examples</i>	26

Color

CIELCh(69, 25.557, 71.546)

Conversions

Conversions Part 1

Format	Color
Hex	C6A27D
RGB	198, 162, 125
RGB Percent	78%, 64%, 49%
CMY	0.2234, 0.3646, 0.5097
CMYK	0.00, 0.18, 0.37, 0.22
HSL	30°, 39%, 63%
HSV	30°, 37%, 78%
XYZ	39.9279, 39.3444, 24.9026
YIQ	168.5460, 33.3330, -3.8750

Conversions

Conversions Part 2

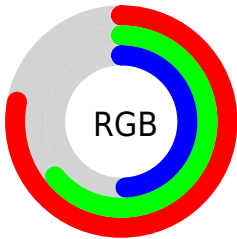
Format	Color
RYB	196, 198, 125
Decimal	13017725
CIELab	69.00, 8.09, 24.24
CIElCh	69, 25.557, 71.546
Yxy	39.3444, 0.3833, 0.3777
Android (android.graphics.Color)	4291207805 (0xFFC6A27D)
YUV	168.5460, -21.4682, 25.8312
Hunter-Lab	62.7251, 3.8560, 20.3688

Details

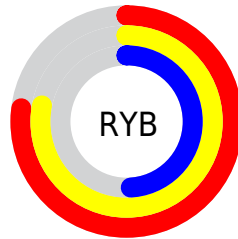
The CIELCh color **69, 25.557, 71.546** is a light color, and the websafe version is hex **CC9966**. A complement of this color would be **65, 23.142, 262.317**, and the grayscale version is **69, 0.009, 296.813**.

A 20% lighter version of the original color is **89, 25.334, 72.298**, and **49, 25.411, 70.479** is the 20% darker color. If you saturate the color by 10%, you get **66, 33.224, 70.272**, and if you desaturate by 10%, it is **72, 18.200, 72.817**.

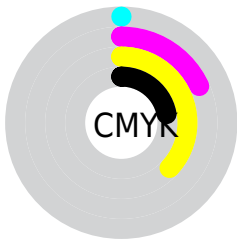
Distribution



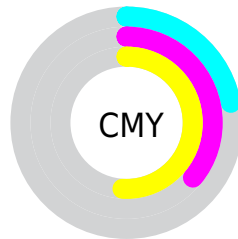
- Red (78%)
- Green (64%)
- Blue (49%)



- Red (77%)
- Yellow (78%)
- Blue (49%)



- Cyan (0%)
- Magenta (18%)
- Yellow (37%)
- Black (22%)



- Cyan (22%)
- Magenta (36%)
- Yellow (51%)

Brightness & Saturation Gradients

These gradients show how the CIELCh color 69, 25.557, 71.546 changes by changing the brightness by 10 percent. The first figure shows a shift by +10% for each color and the second figure -10%.

Similar to the brightness gradients but the following saturation gradients show a change of the CIELCh color 69, 25.557, 71.546 by changing the saturation by 10% instead.

■ 69, 25.557, 71.546

■ 69, 25.557, 71.546

■ 100, 25.557,
71.546

■ 59, 25.557, 71.546

■ 89, 25.557, 71.546

■ 49, 25.557, 71.546

■ 99, 25.557, 71.546

■ 39, 25.557, 71.546

■ 29, 25.557, 71.546

■ 19, 25.557, 71.546

■ 9, 25.557, 71.546

■ 0, 25.557, 71.546

■ 69, 25.557, 71.546

■ 69, 25.557, 71.546

■ 66, 33.224, 70.272

■ 72, 18.200, 72.817

63, 41.139, 68.967

75, 11.165, 74.062

61, 49.145, 67.602

78, 4.440, 75.250

58, 56.904, 66.088

81, 1.997, 256.721

56, 63.773, 64.233

84, 8.175, 257.761

54, 68.865, 61.744

87, 14.119,
258.881

53, 70.338, 60.969

90, 16.333,
250.795

92, 15.572,
228.314

95, 17.144,
207.190

Harmonies

Complementary

The Complementary color scheme is a pair of colors which are on the opposite of each other on the color wheel.



69, 25.557, 71.546



65, 23.142, 262.317

Rectangle

The Rectangle color scheme consists of four colors that form a rectangle on the color wheel.



69, 25.557, 71.546



69, 25.557, 121.546



69, 25.557, 251.546



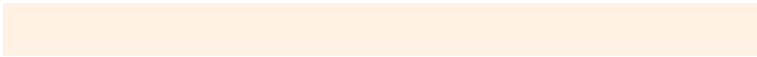
69, 25.557, 301.546

Sweetspot

The Sweet Spot groups the original color and five complimentary colors.



69, 25.557, 71.552



96, 8.826, 74.752



61, 34.303, 347.222



51, 5.949, 74.588



0, 0.000, 0.000



53, 0.007, 296.813

Same Dimension

The Same Dimension uses a secret algorithm to generate beautiful new colors.



69, 25.557, 71.552



84, 38.117, 70.555



78, 38.204, 106.645



40, 3.704, 74.962



44, 60.766, 61.544



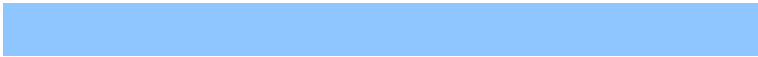
7, 12.958, 58.301

Inverse Universe

The Inverse Universe completely reimagines the original color for something new.



65, 23.142, 262.317



78, 33.723, 264.189



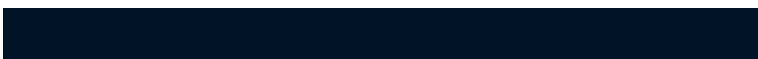
55, 41.926, 294.970



40, 3.628, 257.442



35, 51.949, 284.288



5, 14.131, 270.897

Previews

White Background



This preview shows how the CIELCh color 69, 25.557, 71.546 looks on a white background.

Color Contrast Check

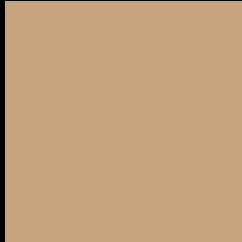
Large Text (above 18pt) WCAG AA × Fail

Any Text WCAG AA × Fail

Large Text (above 18pt) WCAG AAA × Fail

Any Text WCAG AAA × Fail

Black Background



This preview shows how the CIELCh color 69, 25.557, 71.546 looks on a black background.

Color Contrast Check

Large Text (above 18pt) WCAG AA ✓ Pass

Any Text WCAG AA ✓ Pass

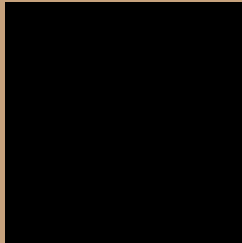
Large Text (above 18pt) WCAG AAA ✓ Pass

Any Text WCAG AAA ✓ Pass

If you want to check with other color combinations, try the [Color Contrast Checker](#).

CIELCh 69, 25.557, 71.546

Background



This preview shows how black text looks on a background with the CIELCh color 69, 25.557, 71.546.



This preview shows how white text looks on a background with the CIELCh color 69, 25.557, 71.546.

Color Blindness Simulation

Color vision deficiency is a very complex topic, and I could not describe the different causes any better than Wikipedia does, so if you want to learn more, you should check out their [article about color blindness](#).

Dichromacy



Original Color

69, 25.557, 71.546

Protanopia

69, 22.358, 95.069

Deuteranopia

69, 25.828, 70.804



Tritanopia
69, 19.333, 1.552

Trichromacy



Original Color
69, 25.557, 71.546

Protanomaly
69, 23.086, 85.634

Deuteranomaly
69, 25.828, 70.804

Tritanomaly
69, 17.650, 31.528

Monochromacy



Original Color
69, 25.557, 71.546

Achromatopsia
69, 0.009, 296.813

Achromatomaly
69, 9.012, 71.573

CSS Examples

Text

The CSS property to change the color of the text to CIELCh 69, 25.557, 71.546 is called "color". The color property can be set on classes, ids or directly on the HTML element.

This example shows how text in the color `rgb(198, 162, 125)` looks like.

```
.text, #text, p{  
    color:rgb(198, 162, 125)  
}
```

If you want to add a text shadow in that color use the text-shadow property, you can generate a text shadow directly with our [CSS Text Shadow Generator](#).

Here you see how black text with a 4 pixel rgb(198, 162, 125) colored shadow looks like.

```
.shadow{ text-shadow: 4px 4px 2px rgb(198, 162, 125) }
```

Border

The CSS property to change the border of an element to CIELCh 69, 25.557, 71.546 is called "border". The border property can be set on classes, ids or directly on the HTML element.

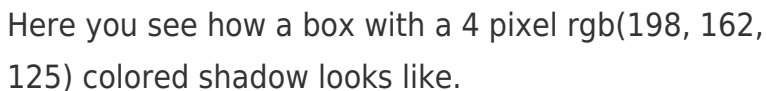
This example shows the color as border, it can be applied via the CSS property "border" or "border-color".

```
.border, #border, table{ border:4px solid rgb(198, 162, 125) }
```

If only the border color should be changed use the property `border-color`.

```
.border{ border-color:rgb(198, 162, 125) }
```

If you want to add a box shadow in that color use:



Here you see how a box with a 4 pixel `rgb(198, 162, 125)` colored shadow looks like.

```
.boxshadow{ -moz-box-shadow:4px 4px 4px 4px rgb(198, 162, 125); -webkit-box-shadow:4px 4px 4px 4px rgb(198, 162, 125); box-shadow:4px 4px 4px 4px rgb(198, 162, 125) }
```

Background

The CSS property to change the background color of an element to CIELCh 69, 25.557, 71.546 is called "background". The background property can be set on classes, ids or directly on the HTML element.

```
.background, #background, body{  
background: rgb(198, 162, 125) }
```

If only the background color should be changed can be used:

```
.background{ background-color: rgb(198,  
162, 125) }
```

This example shows the color as background, it is applied via the CSS property "background".

To optimize and compress your CSS code, you can use our [online CSS compressor and optimizer](#) based on csstidy. If you want to create a linear or radial gradient as background or border, check our [CSS Gradient Generator](#).

Hey! You found this booklet interesting? Support Converting Colors with the new Membership Option!

The pro membership hides all ads, plus gives you double the colors in the color bucket, and more awesome pro features!

[Learn more, Memberships starting at \\$2.50/m!](#)

**Follow me
on Twitter!**

@ConvertingColor