

Converting Colors

CIELCh(69, 26.221, 58.595)

Have a look what the booklet for
CIELCh(69, 26.221, 58.595) contains.

CIELCh(69, 26.076, 59.066)	3
<i>Conversions</i>	4
<i>Details</i>	6
<i>Harmonies</i>	11
<i>Previews</i>	20
<i>Color Blindness Simulation</i>	23
<i>CSS Examples</i>	26

Color

CIELCh(69, 26.076, 59.066)

Conversions

Conversions Part 1

Format	Color
Hex	CE9F81
RGB	206, 159, 129
RGB Percent	81%, 62%, 51%
CMY	0.1934, 0.3776, 0.4953
CMYK	0.00, 0.23, 0.37, 0.19
HSL	23°, 44%, 66%
HSV	23°, 37%, 81%
XYZ	41.6521, 39.3444, 26.0660
YIQ	169.6330, 37.6420, 0.6340

Conversions

Conversions Part 2

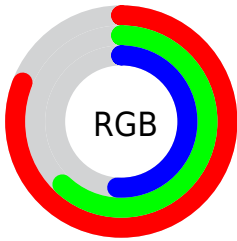
Format	Color
R _Y B	206, 178, 129
Decimal	13541249
CIE Lab	69.00, 13.40, 22.37
CIE LCh	69, 26.076, 59.066
Yxy	39.3444, 0.3890, 0.3675
Android (android.graphics.Color)	4291731329 (0xFFCE9F81)
YUV	169.6330, -20.0321, 31.8939
Hunter-Lab	62.7251, 8.7627, 19.2690

Details

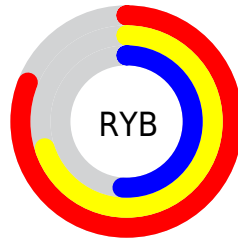
The CIELCh color **69, 26.076, 59.066** is a light color, and the websafe version is hex **CC9966**. A complement of this color would be **69, 21.756, 248.119**, and the grayscale version is **69, 0.009, 296.813**.

A 20% lighter version of the original color is **88, 23.297, 65.221**, and **49, 25.829, 59.442** is the 20% darker color. If you saturate the color by 10%, you get **66, 34.157, 58.218**, and if you desaturate by 10%, it is **73, 18.481, 59.973**.

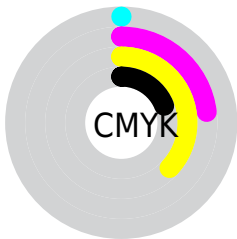
Distribution



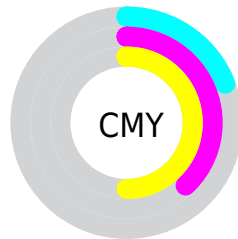
- Red (81%)
- Green (62%)
- Blue (51%)



- Red (81%)
- Yellow (70%)
- Blue (51%)



- Cyan (0%)
- Magenta (23%)
- Yellow (37%)
- Black (19%)



- Cyan (19%)
- Magenta (38%)
- Yellow (50%)

Brightness & Saturation Gradients

These gradients show how the CIELCh color 69, 26.076, 59.066 changes by changing the brightness by 10 percent. The first figure shows a shift by +10% for each color and the second figure -10%.

Similar to the brightness gradients but the following saturation gradients show a change of the CIELCh color 69, 26.076, 59.066 by changing the saturation by 10% instead.

69, 26.076, 59.066

69, 26.076, 59.066

100, 26.076,
59.066

59, 26.076, 59.066

89, 26.076, 59.066

49, 26.076, 59.066

99, 26.076, 59.066

39, 26.076, 59.066

29, 26.076, 59.066

19, 26.076, 59.066

9, 26.076, 59.066

0, 26.076, 59.066

69, 26.076, 59.066

69, 26.076, 59.066

66, 34.157, 58.218

73, 18.481, 59.973

62, 42.692, 57.408

76, 11.362, 60.904

59, 51.555, 56.611

80, 4.686, 61.819

56, 60.432, 55.730

84, 1.588, 243.192

53, 68.647, 54.528

87, 7.502, 243.949

51, 75.141, 52.630

91, 13.100,
244.898

50, 76.726, 52.183

95, 14.103,
216.625

97, 16.353,
198.419

Harmonies

Complementary

The Complementary color scheme is a pair of colors which are on the opposite of each other on the color wheel.



69, 26.076, 59.066



69, 21.756, 248.119

Rectangle

The Rectangle color scheme consists of four colors that form a rectangle on the color wheel.



69, 26.076, 59.066



69, 26.076, 109.066



69, 26.076, 239.066



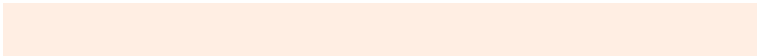
69, 26.076, 289.066

Sweetspot

The Sweet Spot groups the original color and five complimentary colors.



69, 26.076, 59.072



95, 8.370, 61.489



63, 38.558, 340.980



50, 5.649, 61.362



0, 0.000, 0.000



53, 0.007, 296.813

Same Dimension

The Same Dimension uses a secret algorithm to generate beautiful new colors.



69, 26.076, 59.072



81, 38.357, 58.373



79, 35.904, 100.933



41, 3.581, 61.647



41, 65.021, 52.783



7, 14.696, 45.168

Inverse Universe

The Inverse Universe completely reimagines the original color for something new.



69, 21.756, 248.119



81, 30.559, 249.949



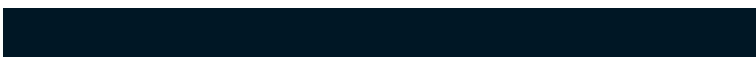
59, 38.522, 290.277



41, 3.446, 243.738



41, 41.544, 270.449



7, 13.193, 258.739

Previews

White Background



This preview shows how the CIELCh color 69, 26.076, 59.066 looks on a white background.

Color Contrast Check

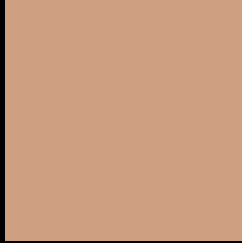
Large Text (above 18pt) WCAG AA × Fail

Any Text WCAG AA × Fail

Large Text (above 18pt) WCAG AAA × Fail

Any Text WCAG AAA × Fail

Black Background



This preview shows how the CIELCh color 69, 26.076, 59.066 looks on a black background.

Color Contrast Check

Large Text (above 18pt) WCAG AA ✓ Pass

Any Text WCAG AA ✓ Pass

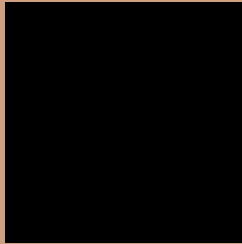
Large Text (above 18pt) WCAG AAA ✓ Pass

Any Text WCAG AAA ✓ Pass

If you want to check with other color combinations, try the [Color Contrast Checker](#).

CIELCh 69, 26.076, 59.066

Background



This preview shows how black text looks on a background with the CIELCh color 69, 26.076, 59.066.



This preview shows how white text looks on a background with the CIELCh color 69, 26.076, 59.066.

Color Blindness Simulation

Color vision deficiency is a very complex topic, and I could not describe the different causes any better than Wikipedia does, so if you want to learn more, you should check out their [article about color blindness](#).

Dichromacy





Tritanopia
69, 22.286, 6.071

Trichromacy



Original Color
69, 26.076, 59.066

Protanomaly
69, 21.180, 80.156

Deuteranomaly
69, 24.971, 65.891

Tritanomaly
69, 21.134, 27.172

Monochromacy



Original Color
69, 26.076, 59.066

Achromatopsia
69, 0.009, 296.813

Achromatomaly
69, 9.026, 61.476

CSS Examples

Text

The CSS property to change the color of the text to CIELCh 69, 26.076, 59.066 is called "color". The color property can be set on classes, ids or directly on the HTML element.

This example shows how text in the color `rgb(206, 159, 129)` looks like.

```
.text, #text, p{  
    color:rgb(206, 159, 129)  
}
```

If you want to add a text shadow in that color use the text-shadow property, you can generate a text shadow directly with our [CSS Text Shadow Generator](#).

Here you see how black text with a 4 pixel rgb(206, 159, 129) colored shadow looks like.

```
.shadow{ text-shadow: 4px 4px 2px rgb(206, 159, 129) }
```

Border

The CSS property to change the border of an element to CIELCh 69, 26.076, 59.066 is called "border". The border property can be set on classes, ids or directly on the HTML element.

This example shows the color as border, it can be applied via the CSS property "border" or "border-color".

```
.border, #border, table{ border:4px solid rgb(206, 159, 129) }
```

If only the border color should be changed use the property `border-color`.

```
.border{ border-color:rgb(206, 159, 129) }
```

If you want to add a box shadow in that color use:

Here you see how a box with a 4 pixel `rgb(206, 159, 129)` colored shadow looks like.

```
.boxshadow{ -moz-box-shadow:4px 4px 4px 4px rgb(206, 159, 129); -webkit-box-shadow:4px 4px 4px 4px rgb(206, 159, 129); box-shadow:4px 4px 4px 4px rgb(206, 159, 129) }
```

Background

The CSS property to change the background color of an element to CIELCh 69, 26.076, 59.066 is called "background". The background property can be set on classes, ids or directly on the HTML element.

```
.background, #background, body{  
background: rgb(206, 159, 129) }
```

If only the background color should be changed can be used:

```
.background{ background-color: rgb(206,  
159, 129) }
```

This example shows the color as background, it is applied via the CSS property "background".

To optimize and compress your CSS code, you can use our [online CSS compressor and optimizer](#) based on csstidy. If you want to create a linear or radial gradient as background or border, check our [CSS Gradient Generator](#).

Hey! You found this booklet interesting? Support Converting Colors with the new Membership Option!

The pro membership hides all ads, plus gives you double the colors in the color bucket, and more awesome pro features!

[Learn more, Memberships starting at \\$2.50/m!](#)

**Follow me
on Twitter!**

@ConvertingColor