

Converting Colors

CIELCh(69, 27.347, 50.439)

Have a look what the booklet for
CIELCh(69, 27.347, 50.439) contains.

CIELCh(69, 27.276, 50.754)	3
<i>Conversions</i>	4
<i>Details</i>	6
<i>Harmonies</i>	11
<i>Previews</i>	20
<i>Color Blindness Simulation</i>	23
<i>CSS Examples</i>	26

Color

CIELCh(69, 27.276, 50.754)

Conversions

Conversions Part 1

Format	Color
Hex	D39C83
RGB	211, 156, 131
RGB Percent	83%, 61%, 51%
CMY	0.1719, 0.3876, 0.4857
CMYK	0.00, 0.26, 0.38, 0.17
HSL	19°, 48%, 67%
HSV	19°, 38%, 83%
XYZ	42.9324, 39.3444, 26.8569
YIQ	169.5950, 40.8050, 3.8850

Conversions

Conversions Part 2

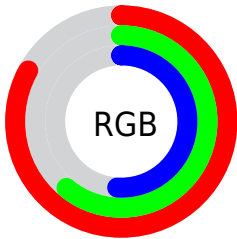
Format	Color
RYB	211, 167, 131
Decimal	13868163
CIELab	69.00, 17.26, 21.12
CIElCh	69, 27.276, 50.754
Yxy	39.3444, 0.3934, 0.3605
Android (android.graphics.Color)	4292058243 (0xFFD39C83)
YUV	169.5950, -19.0273, 36.3122
Hunter-Lab	62.7251, 12.4059, 18.5215

Details

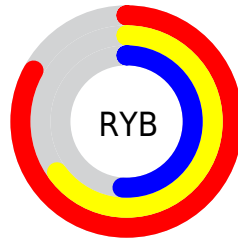
The CIELCh color **69, 27.276, 50.754** is a light color, and the websafe version is hex **CC9966**. A complement of this color would be **73, 21.660, 237.518**, and the grayscale version is **70, 0.009, 296.813**.

A 20% lighter version of the original color is **88, 22.383, 58.846**, and **49, 27.536, 51.580** is the 20% darker color. If you saturate the color by 10%, you get **65, 35.815, 50.354**, and if you desaturate by 10%, it is **73, 19.319, 51.267**.

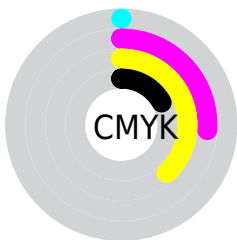
Distribution



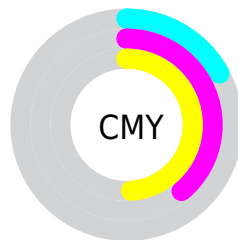
- Red (83%)
- Green (61%)
- Blue (51%)



- Red (83%)
- Yellow (65%)
- Blue (51%)



- Cyan (0%)
- Magenta (26%)
- Yellow (38%)
- Black (17%)



- Cyan (17%)
- Magenta (39%)
- Yellow (49%)

Brightness & Saturation Gradients

These gradients show how the CIELCh color 69, 27.276, 50.754 changes by changing the brightness by 10 percent. The first figure shows a shift by +10% for each color and the second figure -10%.

Similar to the brightness gradients but the following saturation gradients show a change of the CIELCh color 69, 27.276, 50.754 by changing the saturation by 10% instead.

69, 27.276, 50.754

69, 27.276, 50.754

100, 27.276,
50.754

59, 27.276, 50.754

89, 27.276, 50.754

49, 27.276, 50.754

99, 27.276, 50.754

39, 27.276, 50.754

29, 27.276, 50.754

19, 27.276, 50.754

9, 27.276, 50.754

0, 27.276, 50.754

69, 27.276, 50.754

69, 27.276, 50.754

65, 35.815, 50.354

73, 19.319, 51.267

61, 44.910, 50.057

77, 11.931, 51.851

58, 54.437, 49.847

81, 5.070, 52.457

55, 64.074, 49.626

86, 1.312, 233.666

52, 73.094, 49.131

90, 7.268, 234.081

50, 80.292, 47.936

94, 12.141,
228.830

49, 81.726, 47.739

97, 14.631,
198.531

Harmonies

Complementary

The Complementary color scheme is a pair of colors which are on the opposite of each other on the color wheel.



69, 27.276, 50.754



73, 21.660, 237.518

Rectangle

The Rectangle color scheme consists of four colors that form a rectangle on the color wheel.



69, 27.276, 50.754



69, 27.276, 100.754



69, 27.276, 230.754



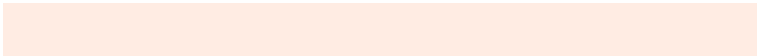
69, 27.276, 280.754

Sweetspot

The Sweet Spot groups the original color and five complimentary colors.



69, 27.275, 50.760



95, 8.335, 52.267



65, 42.121, 337.106



50, 5.629, 52.184



0, 0.000, 0.000



53, 0.007, 296.813

Same Dimension

The Same Dimension uses a secret algorithm to generate beautiful new colors.



69, 27.275, 50.760



79, 38.862, 50.441



79, 34.397, 95.937



42, 3.636, 52.370



39, 68.620, 48.283



7, 16.747, 38.323

Inverse Universe

The Inverse Universe completely reimagines the original color for something new.



73, 21.660, 237.518



84, 29.205, 238.957



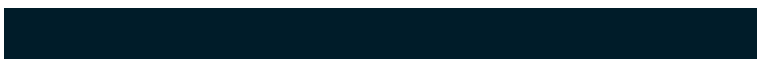
62, 36.066, 286.128



42, 3.463, 233.959



46, 36.481, 258.033



9, 12.814, 246.352

Previews

White Background



This preview shows how the CIELCh color 69, 27.276, 50.754 looks on a white background.

Color Contrast Check

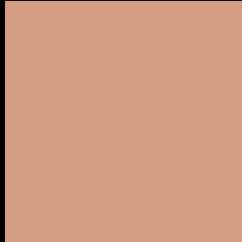
Large Text (above 18pt) WCAG AA × Fail

Any Text WCAG AA × Fail

Large Text (above 18pt) WCAG AAA × Fail

Any Text WCAG AAA × Fail

Black Background



This preview shows how the CIELCh color 69, 27.276, 50.754 looks on a black background.

Color Contrast Check

Large Text (above 18pt) WCAG AA ✓ Pass

Any Text WCAG AA ✓ Pass

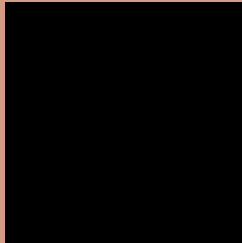
Large Text (above 18pt) WCAG AAA ✓ Pass

Any Text WCAG AAA ✓ Pass

If you want to check with other color combinations, try the [Color Contrast Checker](#).

CIELCh 69, 27.276, 50.754

Background



This preview shows how black text looks on a background with the CIELCh color 69, 27.276, 50.754.




This preview shows how white text looks on a background with the CIELCh color 69, 27.276, 50.754.

Color Blindness Simulation

Color vision deficiency is a very complex topic, and I could not describe the different causes any better than Wikipedia does, so if you want to learn more, you should check out their [article about color blindness](#).

Dichromacy





Tritanopia
69, 25.049, 8.155

Trichromacy



Original Color
69, 27.276, 50.754

Protanomaly
69, 19.506, 73.644

Deuteranomaly
69, 24.709, 61.511

Tritanomaly
69, 23.985, 25.482

Monochromacy



Original Color
69, 27.276, 50.754

Achromatopsia
70, 0.009, 296.813

Achromatomaly
69, 9.307, 51.736

CSS Examples

Text

The CSS property to change the color of the text to CIELCh 69, 27.276, 50.754 is called "color". The color property can be set on classes, ids or directly on the HTML element.

This example shows how text in the color `rgb(211, 156, 131)` looks like.

```
.text, #text, p{  
    color:rgb(211, 156, 131)  
}
```

If you want to add a text shadow in that color use the text-shadow property, you can generate a text shadow directly with our [CSS Text Shadow Generator](#).

Here you see how black text with a 4 pixel rgb(211, 156, 131) colored shadow looks like.

```
.shadow{ text-shadow: 4px 4px 2px rgb(211, 156, 131) }
```

Border

The CSS property to change the border of an element to CIELCh 69, 27.276, 50.754 is called "border". The border property can be set on classes, ids or directly on the HTML element.

This example shows the color as border, it can be applied via the CSS property "border" or "border-color".

```
.border, #border, table{ border:4px solid rgb(211, 156, 131) }
```

If only the border color should be changed use the property border-color.

```
.border{ border-color:rgb(211, 156, 131) }
```

If you want to add a box shadow in that color use:

Here you see how a box with a 4 pixel rgb(211, 156, 131) colored shadow looks like.

```
.boxshadow{ -moz-box-shadow:4px 4px 4px  
4px rgb(211, 156, 131); -webkit-box-  
shadow:4px 4px 4px 4px rgb(211, 156, 131);  
box-shadow:4px 4px 4px 4px rgb(211, 156,  
131) }
```

Background

The CSS property to change the background color of an element to CIELCh 69, 27.276, 50.754 is called "background". The background property can be set on classes, ids or directly on the HTML element.

```
.background, #background, body{  
background: rgb(211, 156, 131) }
```

If only the background color should be changed can be used:

```
.background{ background-color: rgb(211,  
156, 131) }
```

This example shows the color as background, it is applied via the CSS property "background".

To optimize and compress your CSS code, you can use our [online CSS compressor and optimizer](#) based on csstidy. If you want to create a linear or radial gradient as background or border, check our [CSS Gradient Generator](#).

Hey! You found this booklet interesting? Support Converting Colors with the new Membership Option!

The pro membership hides all ads, plus gives you double the colors in the color bucket, and more awesome pro features!

[Learn more, Memberships starting at \\$2.50/m!](#)

**Follow me
on Twitter!**

@ConvertingColor