

Converting Colors

CIELCh(69, 28.137, 48.651)

Have a look what the booklet for
CIELCh(69, 28.137, 48.651) contains.

CIELCh(69, 28.137, 48.651)	3
<i>Conversions</i>	4
<i>Details</i>	6
<i>Harmonies</i>	11
<i>Previews</i>	20
<i>Color Blindness Simulation</i>	23
<i>CSS Examples</i>	26

Color

CIELCh(69, 28.137, 48.651)

Conversions

Conversions Part 1

Format	Color
Hex	D59B83
RGB	213, 155, 131
RGB Percent	84%, 61%, 51%
CMY	0.1638, 0.3913, 0.4854
CMYK	0.00, 0.27, 0.38, 0.16
HSL	18°, 50%, 68%
HSV	18°, 38%, 84%
XYZ	43.3812, 39.3444, 26.8576
YIQ	169.6060, 42.2720, 4.8320

Conversions

Conversions Part 2

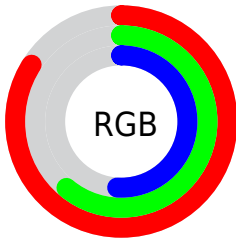
Format	Color
R _Y B	213, 165, 131
Decimal	13998979
CIE Lab	69.00, 18.59, 21.12
CIE LCh	69, 28.137, 48.651
Yxy	39.3444, 0.3959, 0.3590
Android (android.graphics.Color)	4292189059 (0xFFD59B83)
YUV	169.6060, -19.0328, 38.0565
Hunter-Lab	62.7251, 13.6832, 18.5208

Details

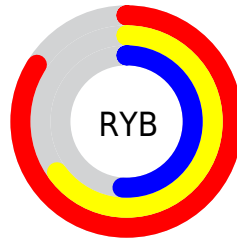
The CIELCh color **69, 28.137, 48.651** is a light color, and the websafe version is hex **CC9999**. A complement of this color would be **74, 22.027, 234.783**, and the grayscale version is **70, 0.009, 296.813**.

A 20% lighter version of the original color is **87, 22.373, 57.264**, and **49, 28.057, 49.797** is the 20% darker color. If you saturate the color by 10%, you get **65, 36.862, 48.387**, and if you desaturate by 10%, it is **73, 20.016, 49.043**.

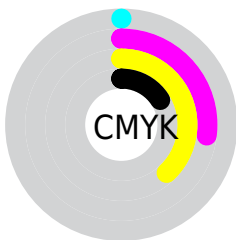
Distribution



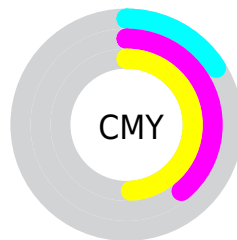
- Red (84%)
- Green (61%)
- Blue (51%)



- Red (84%)
- Yellow (65%)
- Blue (51%)



- Cyan (0%)
- Magenta (27%)
- Yellow (38%)
- Black (16%)



- Cyan (16%)
- Magenta (39%)
- Yellow (49%)


Brightness & Saturation Gradients

These gradients show how the CIELCh color 69, 28.137, 48.651 changes by changing the brightness by 10 percent. The first figure shows a shift by +10% for each color and the second figure -10%.

Similar to the brightness gradients but the following saturation gradients show a change of the CIELCh color 69, 28.137, 48.651 by changing the saturation by 10% instead.

 69, 28.137, 48.651

 69, 28.137, 48.651

 100, 28.137,
48.651

 59, 28.137, 48.651

 89, 28.137, 48.651

 49, 28.137, 48.651

 99, 28.137, 48.651

 39, 28.137, 48.651

 29, 28.137, 48.651

 19, 28.137, 48.651

 9, 28.137, 48.651

 0, 28.137, 48.651

 69, 28.137, 48.651

 69, 28.137, 48.651

 65, 36.862, 48.387

 73, 20.016, 49.043

61, 46.161, 48.246

77, 12.487, 49.521

58, 55.899, 48.212

82, 5.509, 50.037

55, 65.736, 48.182

86, 0.968, 231.311

52, 74.899, 47.875

90, 6.997, 231.498

49, 82.163, 46.875

95, 11.741,
222.879

49, 83.227, 46.773

97, 13.972,
198.574

Harmonies

Complementary

The Complementary color scheme is a pair of colors which are on the opposite of each other on the color wheel.



69, 28.137, 48.651



74, 22.027, 234.783

Rectangle

The Rectangle color scheme consists of four colors that form a rectangle on the color wheel.



69, 28.137, 48.651



69, 28.137, 98.651



69, 28.137, 228.651



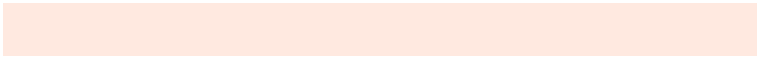
69, 28.137, 278.651

Sweetspot

The Sweet Spot groups the original color and five complimentary colors.



69, 28.136, 48.657



94, 9.156, 49.851



65, 43.562, 336.426



49, 6.104, 49.782



0, 0.000, 0.000



53, 0.007, 296.813

Same Dimension

The Same Dimension uses a secret algorithm to generate beautiful new colors.



69, 28.136, 48.657



78, 40.140, 48.431



79, 34.669, 94.774



43, 3.721, 49.990



39, 70.157, 47.273



7, 18.408, 37.214

Inverse Universe

The Inverse Universe completely reimagines the original color for something new.



74, 22.027, 234.783



84, 29.560, 236.226



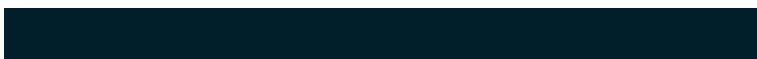
63, 36.179, 285.299



43, 3.535, 231.425



48, 35.775, 254.430



10, 13.125, 243.731

Previews

White Background



This preview shows how the CIELCh color 69, 28.137, 48.651 looks on a white background.

Color Contrast Check

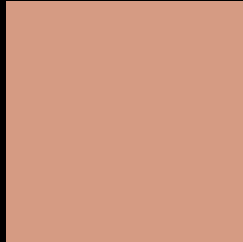
Large Text (above 18pt) WCAG AA × Fail

Any Text WCAG AA × Fail

Large Text (above 18pt) WCAG AAA × Fail

Any Text WCAG AAA × Fail

Black Background



This preview shows how the CIELCh color 69, 28.137, 48.651 looks on a black background.

Color Contrast Check

Large Text (above 18pt) WCAG AA ✓ Pass

Any Text WCAG AA ✓ Pass

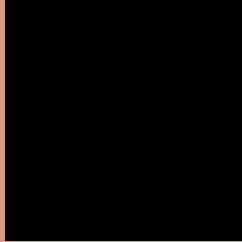
Large Text (above 18pt) WCAG AAA ✓ Pass

Any Text WCAG AAA ✓ Pass

If you want to check with other color combinations, try the [Color Contrast Checker](#).

CIELCh 69, 28.137, 48.651

Background



This preview shows how black text looks on a background with the CIELCh color 69, 28.137, 48.651.



This preview shows how white text looks on a background with the CIELCh color 69, 28.137, 48.651.

Color Blindness Simulation

Color vision deficiency is a very complex topic, and I could not describe the different causes any better than Wikipedia does, so if you want to learn more, you should check out their [article about color blindness](#).

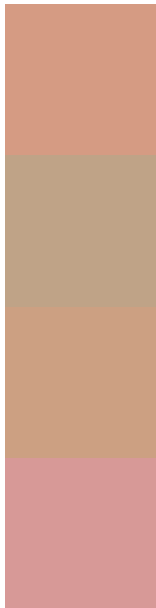
Dichromacy





Tritanopia
69, 26.250, 8.942

Trichromacy



Original Color
69, 28.137, 48.651

Protanomaly
69, 19.329, 71.801

Deuteranomaly
69, 25.036, 60.878

Tritanomaly
69, 25.166, 24.211

Monochromacy



Original Color
69, 28.137, 48.651

Achromatopsia
70, 0.009, 296.813

Achromatomaly
69, 9.652, 50.497

CSS Examples

Text

The CSS property to change the color of the text to CIELCh 69, 28.137, 48.651 is called "color". The color property can be set on classes, ids or directly on the HTML element.

This example shows how text in the color `rgb(213, 155, 131)` looks like.

```
.text, #text, p{  
    color:rgb(213, 155, 131)  
}
```

If you want to add a text shadow in that color use the text-shadow property, you can generate a text shadow directly with our [CSS Text Shadow Generator](#).

Here you see how black text with a 4 pixel rgb(213, 155, 131) colored shadow looks like.

```
.shadow{ text-shadow: 4px 4px 2px rgb(213, 155, 131) }
```

Border

The CSS property to change the border of an element to CIELCh 69, 28.137, 48.651 is called "border". The border property can be set on classes, ids or directly on the HTML element.

This example shows the color as border, it can be applied via the CSS property "border" or "border-color".

```
.border, #border, table{ border:4px solid rgb(213, 155, 131) }
```

If only the border color should be changed use the property `border-color`.

```
.border{ border-color:rgb(213, 155, 131) }
```

If you want to add a box shadow in that color use:

Here you see how a box with a 4 pixel `rgb(213, 155, 131)` colored shadow looks like.

```
.boxshadow{ -moz-box-shadow:4px 4px 4px  
4px rgb(213, 155, 131); -webkit-box-  
shadow:4px 4px 4px 4px rgb(213, 155, 131);  
box-shadow:4px 4px 4px 4px rgb(213, 155,  
131) }
```

Background

The CSS property to change the background color of an element to CIELCh 69, 28.137, 48.651 is called "background". The background property can be set on classes, ids or directly on the HTML element.

```
.background, #background, body{  
background: rgb(213, 155, 131) }
```

If only the background color should be changed can be used:

```
.background{ background-color: rgb(213,  
155, 131) }
```

This example shows the color as background, it is applied via the CSS property "background".

To optimize and compress your CSS code, you can use our [online CSS compressor and optimizer](#) based on csstidy. If you want to create a linear or radial gradient as background or border, check our [CSS Gradient Generator](#).

Hey! You found this booklet interesting? Support Converting Colors with the new Membership Option!

The pro membership hides all ads, plus gives you double the colors in the color bucket, and more awesome pro features!

[Learn more, Memberships starting at \\$2.50/m!](#)

**Follow me
on Twitter!**

@ConvertingColor