

Converting Colors

CIELCh(69, 29.366, 72.130)

Have a look what the booklet for
CIELCh(69, 29.366, 72.130) contains.

CIELCh(69, 29.405, 72.105)	3
<i>Conversions</i>	4
<i>Details</i>	6
<i>Harmonies</i>	11
<i>Previews</i>	20
<i>Color Blindness Simulation</i>	23
<i>CSS Examples</i>	26

Color

CIELCh(69, 29.405, 72.105)

Conversions

Conversions Part 1

Format	Color
Hex	C9A176
RGB	201, 161, 118
RGB Percent	79%, 63%, 46%
CMY	0.2107, 0.3676, 0.5363
CMYK	0.00, 0.20, 0.41, 0.21
HSL	31°, 44%, 63%
HSV	31°, 41%, 79%
XYZ	40.2311, 39.3444, 22.6875
YIQ	168.0580, 37.6430, -4.8930

Conversions

Conversions Part 2

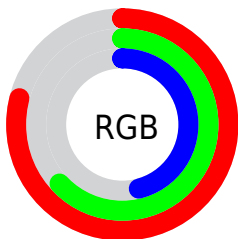
Format	Color
R_{YB}	195, 201, 118
Decimal	13214070
CIE _{Lab}	69.00, 9.04, 27.98
CIE _{LCh}	69, 29.405, 72.105
Yxy	39.3444, 0.3934, 0.3847
Android (android.graphics.Color)	4291404150 (0xFFC9A176)
YUV	168.0580, -24.6786, 28.8901
Hunter-Lab	62.7251, 4.7188, 22.4625

Details

The CIELCh color **69, 29.405, 72.105** is a light color, and the websafe version is hex **CC9966**. A complement of this color would be **64, 26.498, 264.565**, and the grayscale version is **69, 0.009, 296.813**.

A 20% lighter version of the original color is **89, 28.233, 74.902**, and **49, 29.404, 72.891** is the 20% darker color. If you saturate the color by 10%, you get **66, 37.289, 70.794**, and if you desaturate by 10%, it is **72, 21.797, 73.405**.

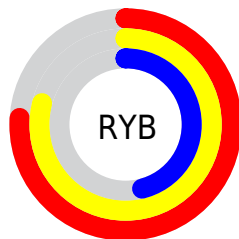
Distribution



Red (79%)

Green (63%)

Blue (46%)



Red (76%)

Yellow (79%)

Blue (46%)

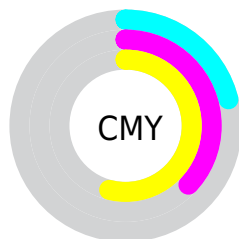


Cyan (0%)

Magenta (20%)

Yellow (41%)

Black (21%)



Cyan (21%)

Magenta (37%)

Yellow (54%)

Brightness & Saturation Gradients

These gradients show how the CIELCh color 69, 29.405, 72.105 changes by changing the brightness by 10 percent. The first figure shows a shift by +10% for each color and the second figure -10%.

Similar to the brightness gradients but the following saturation gradients show a change of the CIELCh color 69, 29.405, 72.105 by changing the saturation by 10% instead.

■ 69, 29.405, 72.105

■ 69, 29.405, 72.105

■ 100, 29.405,
72.105

■ 59, 29.405, 72.105

■ 89, 29.405, 72.105

■ 49, 29.405, 72.105

■ 99, 29.405, 72.105

■ 39, 29.405, 72.105

■ 29, 29.405, 72.105

■ 19, 29.405, 72.105

■ 9, 29.405, 72.105

■ 0, 29.405, 72.105

■ 69, 29.405, 72.105

■ 69, 29.405, 72.105

■ 66, 37.289, 70.794

■ 72, 21.797, 73.405

64, 45.348, 69.438

75, 14.498, 74.679

61, 53.346, 67.986

78, 7.509, 75.918

59, 60.812, 66.313

81, 0.812, 76.763

56, 66.934, 64.172

84, 5.618, 258.466

54, 70.897, 61.865

87, 11.807,
259.596

90, 16.025,
256.398

92, 14.702,
233.539

95, 15.829,
210.647

Harmonies

Complementary

The Complementary color scheme is a pair of colors which are on the opposite of each other on the color wheel.



69, 29.405, 72.105



64, 26.498, 264.565

Rectangle

The Rectangle color scheme consists of four colors that form a rectangle on the color wheel.



69, 29.405, 72.105



69, 29.405, 122.105



69, 29.405, 252.105



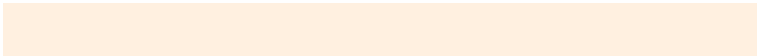
69, 29.405, 302.105

Sweetspot

The Sweet Spot groups the original color and five complimentary colors.



69, 29.405, 72.111



96, 9.723, 75.808



60, 38.479, 348.776



50, 6.468, 75.646



0, 0.000, 0.000



53, 0.007, 296.813

Same Dimension

The Same Dimension uses a secret algorithm to generate beautiful new colors.



69, 29.405, 72.111



82, 44.035, 70.868



79, 43.114, 106.999



40, 3.732, 76.143



45, 60.515, 62.480



7, 12.972, 59.682

Inverse Universe

The Inverse Universe completely reimagines the original color for something new.



64, 26.498, 264.565



75, 38.692, 267.047



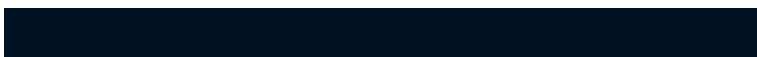
53, 47.992, 296.231



40, 3.662, 258.637



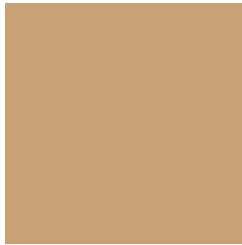
34, 53.108, 285.349



5, 14.312, 271.817

Previews

White Background



This preview shows how the CIELCh color 69, 29.405, 72.105 looks on a white background.

Color Contrast Check

Large Text (above 18pt) WCAG AA × Fail

Any Text WCAG AA × Fail

Large Text (above 18pt) WCAG AAA × Fail

Any Text WCAG AAA × Fail

Black Background



This preview shows how the CIELCh color 69, 29.405, 72.105 looks on a black background.

Color Contrast Check

Large Text (above 18pt) WCAG AA ✓ Pass

Any Text WCAG AA ✓ Pass

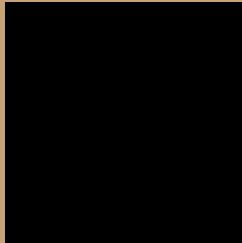
Large Text (above 18pt) WCAG AAA ✓ Pass

Any Text WCAG AAA ✓ Pass

If you want to check with other color combinations, try the [Color Contrast Checker](#).

CIELCh 69, 29.405, 72.105

Background



This preview shows how black text looks on a background with the CIELCh color 69, 29.405, 72.105.



This preview shows how white text looks on a background with the CIELCh color 69, 29.405, 72.105.

Color Blindness Simulation

Color vision deficiency is a very complex topic, and I could not describe the different causes any better than Wikipedia does, so if you want to learn more, you should check out their [article about color blindness](#).

Dichromacy



Original Color

69, 29.405, 72.105

Protanopia

69, 26.140, 95.481

Deuteranopia

69, 29.405, 72.105



Tritanopia
69, 20.851, 3.229

Trichromacy



Original Color
69, 29.405, 72.105

Protanomaly
69, 26.808, 87.264

Deuteranomaly
69, 29.405, 72.105

Tritanomaly
69, 19.627, 33.805

Monochromacy



Original Color
69, 29.405, 72.105

Achromatopsia
69, 0.009, 296.813

Achromatomaly
69, 10.381, 76.839

CSS Examples

Text

The CSS property to change the color of the text to CIELCh 69, 29.405, 72.105 is called "color". The color property can be set on classes, ids or directly on the HTML element.

This example shows how text in the color `rgb(201, 161, 118)` looks like.

```
.text, #text, p{  
    color:rgb(201, 161, 118)  
}
```

If you want to add a text shadow in that color use the text-shadow property, you can generate a text shadow directly with our [CSS Text Shadow Generator](#).

Here you see how black text with a 4 pixel rgb(201, 161, 118) colored shadow looks like.

```
.shadow{ text-shadow: 4px 4px 2px rgb(201, 161, 118) }
```

Border

The CSS property to change the border of an element to CIELCh 69, 29.405, 72.105 is called "border". The border property can be set on classes, ids or directly on the HTML element.

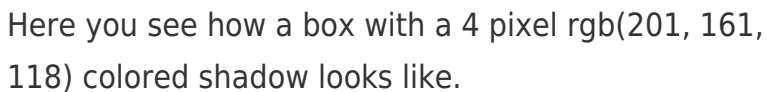
This example shows the color as border, it can be applied via the CSS property "border" or "border-color".

```
.border, #border, table{ border:4px solid rgb(201, 161, 118) }
```

If only the border color should be changed use the property `border-color`.

```
.border{ border-color:rgb(201, 161, 118) }
```

If you want to add a box shadow in that color use:



Here you see how a box with a 4 pixel `rgb(201, 161, 118)` colored shadow looks like.

```
.boxshadow{ -moz-box-shadow:4px 4px 4px 4px rgb(201, 161, 118); -webkit-box-shadow:4px 4px 4px 4px rgb(201, 161, 118); box-shadow:4px 4px 4px 4px rgb(201, 161, 118) }
```

Background

The CSS property to change the background color of an element to CIELCh 69, 29.405, 72.105 is called "background". The background property can be set on classes, ids or directly on the HTML element.

```
.background, #background, body{  
background: rgb(201, 161, 118) }
```

If only the background color should be changed can be used:

```
.background{ background-color: rgb(201,  
161, 118) }
```

This example shows the color as background, it is applied via the CSS property "background".

To optimize and compress your CSS code, you can use our [online CSS compressor and optimizer](#) based on csstidy. If you want to create a linear or radial gradient as background or border, check our [CSS Gradient Generator](#).

Hey! You found this booklet interesting? Support Converting Colors with the new Membership Option!

The pro membership hides all ads, plus gives you double the colors in the color bucket, and more awesome pro features!

[Learn more, Memberships starting at \\$2.50/m!](#)

**Follow me
on Twitter!**

@ConvertingColor