

Converting Colors

CIELCh(69, 29.805, 50.524)

Have a look what the booklet for
CIELCh(69, 29.805, 50.524) contains.

CIELCh(69, 29.873, 50.414)	3
<i>Conversions</i>	4
<i>Details</i>	6
<i>Harmonies</i>	11
<i>Previews</i>	20
<i>Color Blindness Simulation</i>	23
<i>CSS Examples</i>	26

Color

CIELCh(69, 29.873, 50.414)

Conversions

Conversions Part 1

Format	Color
Hex	D79B80
RGB	215, 155, 128
RGB Percent	84%, 61%, 50%
CMY	0.1577, 0.3929, 0.4988
CMYK	0.00, 0.28, 0.40, 0.16
HSL	19°, 52%, 67%
HSV	19°, 40%, 84%
XYZ	43.5327, 39.3444, 25.6556
YIQ	169.8620, 44.4270, 4.3230

Conversions

Conversions Part 2

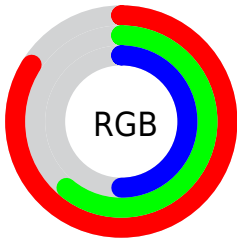
Format	Color
R _Y B	215, 167, 128
Decimal	14130048
CIE Lab	69.00, 19.04, 23.02
CIE LCh	69, 29.873, 50.414
Yxy	39.3444, 0.4011, 0.3625
Android (android.graphics.Color)	4292320128 (0xFFD79B80)
YUV	169.8620, -20.6380, 39.5860
Hunter-Lab	62.7251, 14.1143, 19.6570

Details

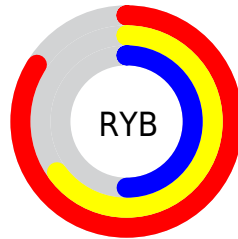
The CIELCh color **69, 29.873, 50.414** is a light color, and the websafe version is hex **CC9966**. A complement of this color would be **73, 23.250, 237.683**, and the grayscale version is **70, 0.009, 296.813**.

A 20% lighter version of the original color is **87, 23.443, 60.038**, and **49, 29.610, 50.702** is the 20% darker color. If you saturate the color by 10%, you get **65, 38.695, 50.056**, and if you desaturate by 10%, it is **73, 21.643, 50.890**.

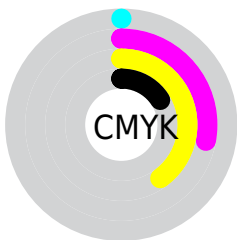
Distribution



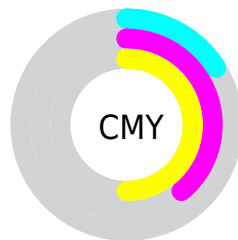
- Red (84%)
- Green (61%)
- Blue (50%)



- Red (84%)
- Yellow (65%)
- Blue (50%)



- Cyan (0%)
- Magenta (28%)
- Yellow (40%)
- Black (16%)



- Cyan (16%)
- Magenta (39%)
- Yellow (50%)

Brightness & Saturation Gradients

These gradients show how the CIELCh color 69, 29.873, 50.414 changes by changing the brightness by 10 percent. The first figure shows a shift by +10% for each color and the second figure -10%.

Similar to the brightness gradients but the following saturation gradients show a change of the CIELCh color 69, 29.873, 50.414 by changing the saturation by 10% instead.

69, 29.873, 50.414

69, 29.873, 50.414

100, 29.873,
50.414

59, 29.873, 50.414

89, 29.873, 50.414

49, 29.873, 50.414

99, 29.873, 50.414

39, 29.873, 50.414

29, 29.873, 50.414

19, 29.873, 50.414

9, 29.873, 50.414

0, 29.873, 50.414

69, 29.873, 50.414

69, 29.873, 50.414

65, 38.695, 50.056

73, 21.643, 50.890

61, 48.062, 49.803

77, 13.998, 51.446

58, 57.808, 49.623

81, 6.903, 52.048

55, 67.523, 49.385

86, 0.309, 51.112

52, 76.308, 48.760

90, 5.837, 233.633

50, 82.903, 47.598

94, 11.159,
230.506

97, 13.481,
198.606

Harmonies

Complementary

The Complementary color scheme is a pair of colors which are on the opposite of each other on the color wheel.



69, 29.873, 50.414



73, 23.250, 237.683

Rectangle

The Rectangle color scheme consists of four colors that form a rectangle on the color wheel.



69, 29.873, 50.414



69, 29.873, 100.414



69, 29.873, 230.414



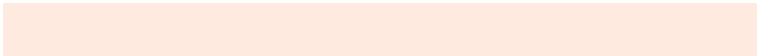
69, 29.873, 280.414

Sweetspot

The Sweet Spot groups the original color and five complimentary colors.



69, 29.872, 50.420



94, 9.129, 51.951



65, 45.524, 337.333



49, 6.085, 51.871



0, 0.000, 0.000



53, 0.007, 296.813

Same Dimension

The Same Dimension uses a secret algorithm to generate beautiful new colors.



69, 29.872, 50.420



77, 42.996, 50.088



80, 37.252, 95.612



43, 3.710, 52.112



40, 69.497, 48.135



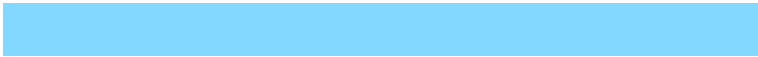
7, 18.221, 38.700

Inverse Universe

The Inverse Universe completely reimagines the original color for something new.



73, 23.250, 237.683



82, 31.297, 239.510



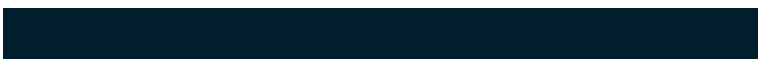
61, 39.245, 286.667



43, 3.532, 233.687



47, 36.782, 257.711



10, 13.326, 246.728

Previews

White Background



This preview shows how the CIELCh color 69, 29.873, 50.414 looks on a white background.

Color Contrast Check

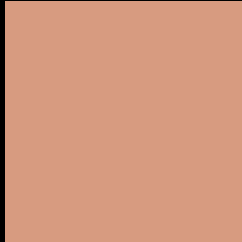
Large Text (above 18pt) WCAG AA × Fail

Any Text WCAG AA × Fail

Large Text (above 18pt) WCAG AAA × Fail

Any Text WCAG AAA × Fail

Black Background



This preview shows how the CIELCh color 69, 29.873, 50.414 looks on a black background.

Color Contrast Check

Large Text (above 18pt) WCAG AA ✓ Pass

Any Text WCAG AA ✓ Pass

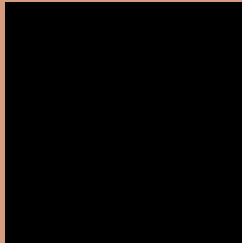
Large Text (above 18pt) WCAG AAA ✓ Pass

Any Text WCAG AAA ✓ Pass

If you want to check with other color combinations, try the [Color Contrast Checker](#).

CIELCh 69, 29.873, 50.414

Background



This preview shows how black text looks on a background with the CIELCh color 69, 29.873, 50.414.

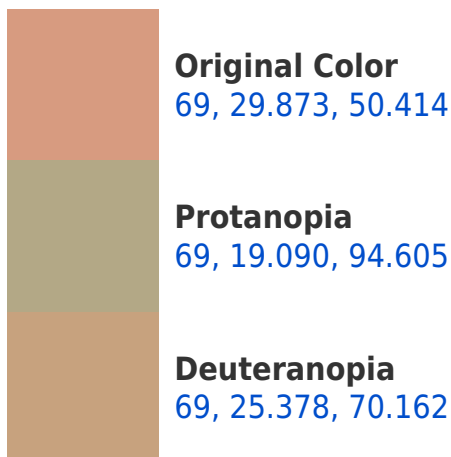


This preview shows how white text looks on a background with the CIELCh color 69, 29.873, 50.414.

Color Blindness Simulation

Color vision deficiency is a very complex topic, and I could not describe the different causes any better than Wikipedia does, so if you want to learn more, you should check out their [article about color blindness](#).

Dichromacy





Tritanopia
69, 27.514, 8.556

Trichromacy



Original Color
69, 29.873, 50.414

Protanomaly
69, 20.956, 73.274

Deuteranomaly
69, 26.528, 61.230

Tritanomaly
69, 26.447, 24.227

Monochromacy



Original Color
69, 29.873, 50.414

Achromatopsia
70, 0.009, 296.813

Achromatomaly
69, 10.015, 49.341

CSS Examples

Text

The CSS property to change the color of the text to CIELCh 69, 29.873, 50.414 is called "color". The color property can be set on classes, ids or directly on the HTML element.

This example shows how text in the color `rgb(215, 155, 128)` looks like.

```
.text, #text, p{  
    color:rgb(215, 155, 128)  
}
```

If you want to add a text shadow in that color use the text-shadow property, you can generate a text shadow directly with our [CSS Text Shadow Generator](#).

Here you see how black text with a 4 pixel rgb(215, 155, 128) colored shadow looks like.

```
.shadow{ text-shadow: 4px 4px 2px rgb(215, 155, 128) }
```

Border

The CSS property to change the border of an element to CIELCh 69, 29.873, 50.414 is called "border". The border property can be set on classes, ids or directly on the HTML element.

This example shows the color as border, it can be applied via the CSS property "border" or "border-color".

```
.border, #border, table{ border:4px solid rgb(215, 155, 128) }
```

If only the border color should be changed use the property `border-color`.

```
.border{ border-color:rgb(215, 155, 128) }
```

If you want to add a box shadow in that color use:

Here you see how a box with a 4 pixel `rgb(215, 155, 128)` colored shadow looks like.

```
.boxshadow{ -moz-box-shadow:4px 4px 4px  
4px rgb(215, 155, 128); -webkit-box-  
shadow:4px 4px 4px 4px rgb(215, 155, 128);  
box-shadow:4px 4px 4px 4px rgb(215, 155,  
128) }
```

Background

The CSS property to change the background color of an element to CIELCh 69, 29.873, 50.414 is called "background". The background property can be set on classes, ids or directly on the HTML element.

```
.background, #background, body{  
background: rgb(215, 155, 128) }
```

If only the background color should be changed can be used:

```
.background{ background-color: rgb(215,  
155, 128) }
```

This example shows the color as background, it is applied via the CSS property "background".

To optimize and compress your CSS code, you can use our [online CSS compressor and optimizer](#) based on csstidy. If you want to create a linear or radial gradient as background or border, check our [CSS Gradient Generator](#).

Hey! You found this booklet interesting? Support Converting Colors with the new Membership Option!

The pro membership hides all ads, plus gives you double the colors in the color bucket, and more awesome pro features!

[Learn more, Memberships starting at \\$2.50/m!](#)

**Follow me
on Twitter!**

@ConvertingColor