

# Converting Colors

CIELCh(69, 38.888, 5.915)

Have a look what the booklet for  
CIELCh(69, 38.888, 5.915) contains.

<b>CIELCh(69, 38.839, 5.926)</b> .....	3
<i><b>Conversions</b></i> .....	4
<i><b>Details</b></i> .....	6
<i><b>Harmonies</b></i> .....	11
<i><b>Previews</b></i> .....	20
<i><b>Color Blindness Simulation</b></i> .....	23
<i><b>CSS Examples</b></i> .....	26

# **Color**

**CIELCh(69, 38.839, 5.926)**

# Conversions

## Conversions Part 1

Format	Color
Hex	EC8DA3
RGB	236, 141, 163
RGB Percent	93%, 55%, 64%
CMY	0.0760, 0.4484, 0.3622
CMYK	0.00, 0.40, 0.31, 0.08
HSL	346°, 71%, 74%
HSV	346°, 40%, 92%
XYZ	50.5159, 39.3444, 39.4182
YIQ	171.9130, 49.5580, 26.9820

# Conversions

## Conversions Part 2

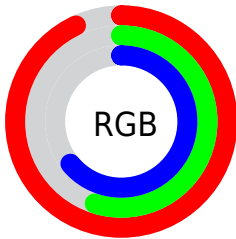
<b>Format</b>	<b>Color</b>
<a href="#">RYB</a>	<a href="#">236, 141, 163</a>
Decimal	<a href="#">15502755</a>
CIELab	<a href="#">69.00, 38.63, 4.01</a>
CIELCh	<a href="#">69, 38.839, 5.926</a>
Yxy	<a href="#">39.3444, 0.3908, 0.3043</a>
Android (android.graphics.Color)	<a href="#">4293692835 (0xFFEC8DA3)</a>
YUV	<a href="#">171.9130, -4.3941, 56.2043</a>
Hunter-Lab	<a href="#">62.7251, 33.9867, 6.6481</a>

# Details

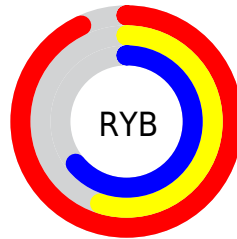
The CIELCh color **69, 38.839, 5.926** is a light color, and the websafe version is hex **FF9999**. A complement of this color would be **87, 33.221, 176.831**, and the grayscale version is **70, 0.009, 296.813**.

A 20% lighter version of the original color is **85, 24.484, 353.457**, and **49, 38.722, 6.503** is the 20% darker color. If you saturate the color by 10%, you get **64, 48.868, 7.941**, and if you desaturate by 10%, it is **75, 28.753, 4.300**.

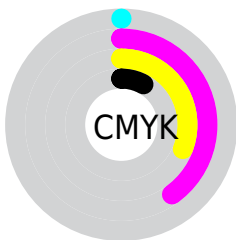
# Distribution



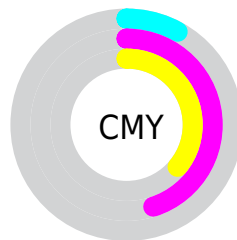
- Red (93%)
- Green (55%)
- Blue (64%)



- Red (93%)
- Yellow (55%)
- Blue (64%)



- Cyan (0%)
- Magenta (40%)
- Yellow (31%)
- Black (8%)



- Cyan (8%)
- Magenta (45%)
- Yellow (36%)


# Brightness & Saturation Gradients

These gradients show how the CIELCh color 69, 38.839, 5.926 changes by changing the brightness by 10 percent. The first figure shows a shift by +10% for each color and the second figure -10%.

Similar to the brightness gradients but the following saturation gradients show a change of the CIELCh color 69, 38.839, 5.926 by changing the saturation by 10% instead.



 69, 38.839, 5.926       69, 38.839, 5.926

 100, 38.839, 5.926       59, 38.839, 5.926

 89, 38.839, 5.926       49, 38.839, 5.926

 99, 38.839, 5.926       39, 38.839, 5.926

 29, 38.839, 5.926

 19, 38.839, 5.926

 9, 38.839, 5.926

 0, 38.839, 5.926

 69, 38.839, 5.926       69, 38.839, 5.926

 64, 48.868, 7.941       75, 28.753, 4.300

■ 59, 58.485, 10.471

■ 81, 18.874, 2.953

■ 55, 67.269, 13.682

■ 87, 9.355, 1.799

■ 52, 74.866, 17.724

■ 93, 0.273, 358.821

■ 51, 81.173, 22.646

■ 99, 6.747, 191.105

■ 50, 86.426, 27.931

■ 99, 6.645, 199.084

# Harmonies

# Complementary

The Complementary color scheme is a pair of colors which are on the opposite of each other on the color wheel.



69, 38.839, 5.926



87, 33.221, 176.831

# Rectangle

The Rectangle color scheme consists of four colors that form a rectangle on the color wheel.



69, 38.839, 5.926



69, 38.839, 55.926



69, 38.839, 185.926



69, 38.839, 235.926

# Sweetspot

The Sweet Spot groups the original color and five complimentary colors.



69, 38.836, 5.929



92, 11.667, 1.991



69, 56.987, 319.547



48, 7.763, 2.138



0, 0.000, 0.000



53, 0.007, 296.813



# Same Dimension

The Same Dimension uses a secret algorithm to generate beautiful new colors.



69, 38.836, 5.929



70, 49.670, 7.481



74, 32.546, 45.938



46, 5.130, 1.707



38, 70.377, 26.893



7, 27.855, 12.989





# Inverse Universe

The Inverse Universe completely reimagines the original color for something new.



69, 38.836, 5.929



70, 49.670, 7.481



81, 24.778, 231.347



46, 5.130, 1.707



38, 70.377, 26.893



7, 27.855, 12.989



# Previews

## White Background



This preview shows how the CIELCh color 69, 38.839, 5.926 looks on a white background.

## Color Contrast Check

Large Text (above 18pt) WCAG AA × Fail

Any Text WCAG AA × Fail

Large Text (above 18pt) WCAG AAA × Fail

Any Text WCAG AAA × Fail

# Black Background



This preview shows how the CIELCh color 69, 38.839, 5.926 looks on a black background.

## Color Contrast Check

Large Text (above 18pt) WCAG AA ✓ Pass

Any Text WCAG AA ✓ Pass

Large Text (above 18pt) WCAG AAA ✓ Pass

Any Text WCAG AAA ✓ Pass

If you want to check with other color combinations, try the [Color Contrast Checker](#).

**CIELCh 69, 38.839, 5.926**

## **Background**



This preview shows how black text looks on a background with the CIELCh color 69, 38.839, 5.926.

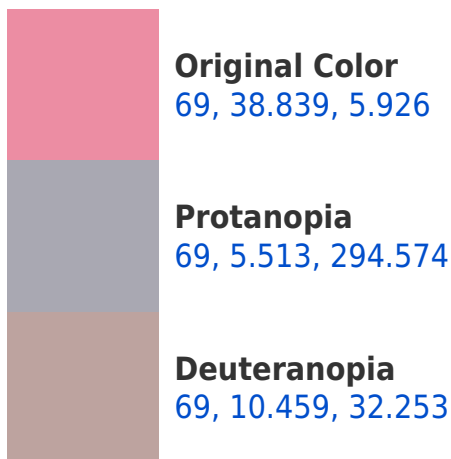


This preview shows how white text looks on a background with the CIELCh color 69, 38.839, 5.926.

# Color Blindness Simulation

Color vision deficiency is a very complex topic, and I could not describe the different causes any better than Wikipedia does, so if you want to learn more, you should check out their [article about color blindness](#).

## Dichromacy

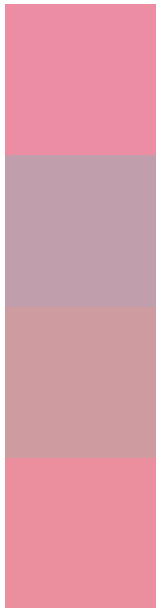




**Tritanopia**  
69, 37.690, 14.388



# Trichromacy



**Original Color**  
69, 38.839, 5.926

**Protanomaly**  
69, 15.423, 351.112

**Deuteranomaly**  
69, 20.328, 13.688

**Tritanomaly**  
69, 37.704, 11.110

# Monochromacy



**Original Color**  
69, 38.839, 5.926

**Achromatopsia**  
70, 0.009, 296.813

**Achromatomaly**  
69, 13.821, 2.314

# CSS Examples

## Text

The CSS property to change the color of the text to CIELCh 69, 38.839, 5.926 is called "color". The color property can be set on classes, ids or directly on the HTML element.

This example shows how text in the color `rgb(236, 141, 163)` looks like.

```
.text, #text, p{  
    color:rgb(236, 141, 163)  
}
```

If you want to add a text shadow in that color use the text-shadow property, you can generate a text shadow directly with our [CSS Text Shadow Generator](#).

Here you see how black text with a 4 pixel rgb(236, 141, 163) colored shadow looks like.

```
.shadow{ text-shadow: 4px 4px 2px rgb(236, 141, 163) }
```

## Border

The CSS property to change the border of an element to CIELCh 69, 38.839, 5.926 is called "border". The border property can be set on classes, ids or directly on the HTML element.

This example shows the color as border, it can be applied via the CSS property "border" or "border-color".

```
.border, #border, table{ border:4px solid rgb(236, 141, 163) }
```

If only the border color should be changed use the property `border-color`.

```
.border{ border-color:rgb(236, 141, 163) }
```

If you want to add a box shadow in that color use:

Here you see how a box with a 4 pixel `rgb(236, 141, 163)` colored shadow looks like.

```
.boxshadow{ -moz-box-shadow:4px 4px 4px  
4px rgb(236, 141, 163); -webkit-box-  
shadow:4px 4px 4px 4px rgb(236, 141, 163);  
box-shadow:4px 4px 4px 4px rgb(236, 141,  
163) }
```

# Background

The CSS property to change the background color of an element to CIELCh 69, 38.839, 5.926 is called "background". The background property can be set on classes, ids or directly on the HTML element.

```
.background, #background, body{  
background: rgb(236, 141, 163) }
```

If only the background color should be changed can be used:

```
.background{ background-color: rgb(236,  
141, 163) }
```

This example shows the color as background, it is applied via the CSS property "background".

To optimize and compress your CSS code, you can use our [online CSS compressor and optimizer](#) based on csstidy. If you want to create a linear or radial gradient as background or border, check our [CSS Gradient Generator](#).

Hey! You found this booklet interesting? Support Converting Colors with the new Membership Option!

The pro membership hides all ads, plus gives you double the colors in the color bucket, and more awesome pro features!

**[Learn more, Memberships starting at \\$2.50/m!](#)**

**Follow me  
on Twitter!**

@ConvertingColor