

# Converting Colors

CIELCh(69, 49.150, 355.046)

Have a look what the booklet for  
CIELCh(69, 49.150, 355.046)  
contains.

<b>CIELCh(69, 49.110, 355.014)</b> .....	3
<b><i>Conversions</i></b> .....	4
<b><i>Details</i></b> .....	6
<b><i>Harmonies</i></b> .....	11
<b><i>Previews</i></b> .....	20
<b><i>Color Blindness Simulation</i></b> .....	23
<b><i>CSS Examples</i></b> .....	26

**Color**

**CIELCh(69, 49.110, 355.014)**

# Conversions

## Conversions Part 1

Format	Color
Hex	F784B2
RGB	247, 132, 178
RGB Percent	97%, 52%, 70%
CMY	0.0326, 0.4835, 0.3031
CMYK	0.00, 0.47, 0.28, 0.03
HSL	336°, 87%, 74%
HSV	336°, 47%, 97%
XYZ	54.4660, 39.3444, 46.6925
YIQ	171.6290, 53.7740, 38.6860

# Conversions

## Conversions Part 2

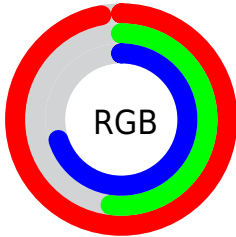
<b>Format</b>	<b>Color</b>
<b>RYB</b>	247, 132, 178
Decimal	16221362
CIELab	69.00, 48.92, -4.27
CIELCh	69, 49.110, 355.014
Yxy	39.3444, 0.3877, 0.2800
Android (android.graphics.Color)	4294411442 (0xFFFF784B2)
YUV	171.6290, 3.1409, 66.1004
Hunter-Lab	62.7251, 45.2276, -0.2278

# Details

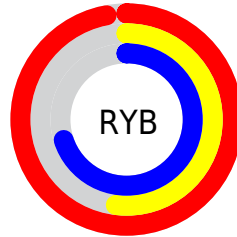
The CIELCh color **69, 49.110, 355.014** is a light color, and the websafe version is hex **FF99CC**. A complement of this color would be **90, 44.861, 164.373**, and the grayscale version is **70, 0.009, 296.813**.

A 20% lighter version of the original color is **83, 34.483, 336.592**, and **49, 49.210, 355.215** is the 20% darker color. If you saturate the color by 10%, you get **64, 58.899, 356.930**, and if you desaturate by 10%, it is **74, 38.633, 353.442**.

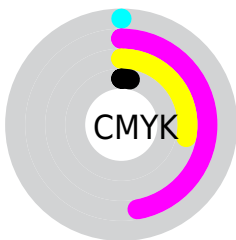
# Distribution



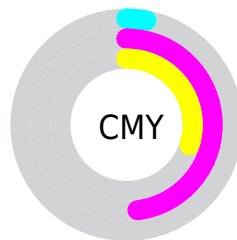
- Red (97%)
- Green (52%)
- Blue (70%)



- Red (97%)
- Yellow (52%)
- Blue (70%)



- Cyan (0%)
- Magenta (47%)
- Yellow (28%)
- Black (3%)



- Cyan (3%)
- Magenta (48%)
- Yellow (30%)

# Brightness & Saturation Gradients


These gradients show how the CIELCh color 69, 49.110, 355.014 changes by changing the brightness by 10 percent. The first figure shows a shift by +10% for each color and the second figure -10%.


Similar to the brightness gradients but the following saturation gradients show a change of the CIELCh color 69, 49.110, 355.014 by changing the saturation by 10% instead.



 69, 49.110,  
355.014

 69, 49.110,  
355.014

 100, 49.110,  
355.014


 59, 49.110,  
355.014

 89, 49.110,  
355.014

 49, 49.110,  
355.014

 99, 49.110,  
355.014

 39, 49.110,  
355.014

 29, 49.110,  
355.014

 19, 49.110,  
355.014

 9, 49.110, 355.014

 0, 49.110, 355.014

69, 49.110,  
355.014

69, 49.110,  
355.014

64, 58.899,  
356.930

74, 38.633,  
353.442

60, 67.485,  
359.314

80, 27.900,  
352.116

57, 74.344, 2.335

87, 17.206,  
350.970

54, 79.155, 6.177

93, 6.740, 349.929

53, 82.053, 10.963

99, 3.359, 169.555

53, 82.877, 12.710

99, 2.879, 199.453

# Harmonies

# Complementary

The Complementary color scheme is a pair of colors which are on the opposite of each other on the color wheel.



69, 49.110, 355.014



90, 44.861, 164.373

# Rectangle

The Rectangle color scheme consists of four colors that form a rectangle on the color wheel.



69, 49.110, 355.014



69, 49.110, 45.014



69, 49.110, 175.014



69, 49.110, 225.014

# Sweetspot

The Sweet Spot groups the original color and five complimentary colors.



69, 49.107, 355.016



91, 14.848, 350.696



66, 66.523, 314.055



47, 10.283, 350.925



0, 0.000, 0.000



53, 0.007, 296.813



# Same Dimension

The Same Dimension uses a secret algorithm to generate beautiful new colors.



69, 49.107, 355.016



66, 59.914, 356.823



70, 44.975, 30.215



48, 5.791, 350.226



40, 66.950, 11.693



9, 29.666, 3.980





# Inverse Universe

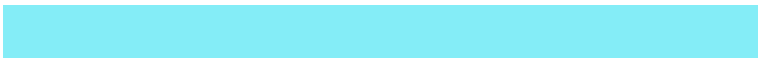
The Inverse Universe completely reimagines the original color for something new.



69, 49.107, 355.016



66, 59.914, 356.823



88, 31.449, 206.701



48, 5.791, 350.226



40, 66.950, 11.693



9, 29.666, 3.980



# Previews

## White Background



This preview shows how the CIELCh color 69, 49.110, 355.014 looks on a white background.

## Color Contrast Check

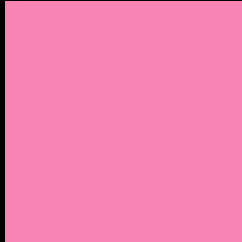
Large Text (above 18pt) WCAG AA × Fail

Any Text WCAG AA × Fail

Large Text (above 18pt) WCAG AAA × Fail

Any Text WCAG AAA × Fail

# Black Background



This preview shows how the CIELCh color 69, 49.110, 355.014 looks on a black background.

## Color Contrast Check

Large Text (above 18pt) WCAG AA ✓ Pass

Any Text WCAG AA ✓ Pass

Large Text (above 18pt) WCAG AAA ✓ Pass

Any Text WCAG AAA ✓ Pass

If you want to check with other color combinations, try the [Color Contrast Checker](#).

# CIELCh 69, 49.110, 355.014

## Background



This preview shows how black text looks on a background with the CIELCh color 69, 49.110, 355.014.



This preview shows how white text looks on a background with the CIELCh color 69, 49.110, 355.014.

# Color Blindness Simulation

Color vision deficiency is a very complex topic, and I could not describe the different causes any better than Wikipedia does, so if you want to learn more, you should check out their [article about color blindness](#).

## Dichromacy

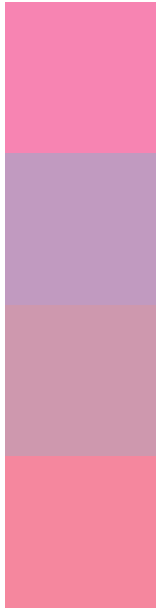




**Tritanopia**  
69, 43.574, 17.088



# Trichromacy



**Original Color**  
69, 49.110, 355.014

**Protanomaly**  
68, 25.331, 326.233

**Deuteranomaly**  
68, 23.826, 351.570

**Tritanomaly**  
69, 44.759, 8.520

# Monochromacy



**Original Color**  
69, 49.110, 355.014

**Achromatopsia**  
70, 0.009, 296.813

**Achromatomaly**  
69, 18.283, 352.658

# CSS Examples

## Text

The CSS property to change the color of the text to CIELCh 69, 49.110, 355.014 is called "color". The color property can be set on classes, ids or directly on the HTML element.

This example shows how text in the color `rgb(247, 132, 178)` looks like.

```
.text, #text, p{  
    color:rgb(247, 132, 178)  
}
```

If you want to add a text shadow in that color use the text-shadow property, you can generate a text shadow directly with our [CSS Text Shadow Generator](#).

Here you see how black text with a 4 pixel rgb(247, 132, 178) colored shadow looks like.

```
.shadow{ text-shadow: 4px 4px 2px rgb(247, 132, 178) }
```

## Border

The CSS property to change the border of an element to CIELCh 69, 49.110, 355.014 is called "border". The border property can be set on classes, ids or directly on the HTML element.

This example shows the color as border, it can be applied via the CSS property "border" or "border-color".

```
.border, #border, table{ border:4px solid rgb(247, 132, 178) }
```

If only the border color should be changed use the property `border-color`.

```
.border{ border-color:rgb(247, 132, 178) }
```

If you want to add a box shadow in that color use:

Here you see how a box with a 4 pixel `rgb(247, 132, 178)` colored shadow looks like.

```
.boxshadow{ -moz-box-shadow:4px 4px 4px  
4px rgb(247, 132, 178); -webkit-box-  
shadow:4px 4px 4px 4px rgb(247, 132, 178);  
box-shadow:4px 4px 4px 4px rgb(247, 132,  
178) }
```

# Background

The CSS property to change the background color of an element to CIELCh 69, 49.110, 355.014 is called "background". The background property can be set on classes, ids or directly on the HTML element.

```
.background, #background, body{  
background: rgb(247, 132, 178) }
```

If only the background color should be changed can be used:

```
.background{ background-color: rgb(247,  
132, 178) }
```

This example shows the color as background, it is applied via the CSS property "background".

To optimize and compress your CSS code, you can use our [online CSS compressor and optimizer](#) based on csstidy. If you want to create a linear or radial gradient as background or border, check our [CSS Gradient Generator](#).

Hey! You found this booklet interesting? Support Converting Colors with the new Membership Option!

The pro membership hides all ads, plus gives you double the colors in the color bucket, and more awesome pro features!

**[Learn more, Memberships starting at \\$2.50/m!](#)**

**Follow me  
on Twitter!**

@ConvertingColor