

Converting Colors

CIELCh(69, 78.241, 11.123)

Have a look what the booklet for
CIELCh(69, 78.241, 11.123) contains.

CIELCh(63, 65.667, 4.538)	3
<i>Conversions</i>	4
<i>Details</i>	6
<i>Harmonies</i>	11
<i>Previews</i>	20
<i>Color Blindness Simulation</i>	23
<i>CSS Examples</i>	26

Color

CIELCh(63, 65.667, 4.538)

Conversions

Conversions Part 1

Format	Color
Hex	FF5E92
RGB	255, 94, 146
RGB Percent	100%, 37%, 57%
CMY	0.0000, 0.6309, 0.4275
CMYK	0.00, 0.63, 0.43, 0.00
HSL	341°, 100%, 68%
HSV	341°, 63%, 100%
XYZ	50.8788, 31.5869, 30.6053
YIQ	148.0670, 79.2640, 50.3040

Conversions

Conversions Part 2

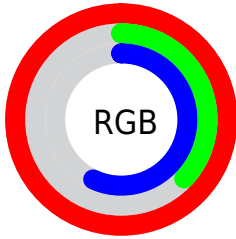
Format	Color
R _Y B	255, 94, 146
Decimal	16735890
CIE Lab	63.00, 65.46, 5.20
CIE LCh	63, 65.667, 4.538
Yxy	31.5869, 0.4500, 0.2794
Android (android.graphics.Color)	4294925970 (0xFFFF5E92)
YUV	148.0670, -1.0190, 93.7802
Hunter-Lab	56.2022, 63.2388, 7.0548

Details

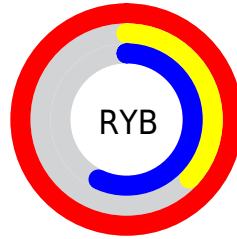
The CIELCh color **63, 65.667, 4.538** is a light color, and the websafe version is hex **FF6699**. The color can be described as light muted rose. A complement of this color would be **91, 55.341, 166.942**, and the grayscale version is **61, 0.008, 296.813**.

A 20% lighter version of the original color is **75, 45.243, 349.794**, and **43, 65.285, 4.043** is the 20% darker color. If you saturate the color by 10%, you get **59, 73.463, 7.469**, and if you desaturate by 10%, it is **67, 55.754, 1.812**.

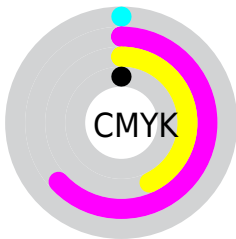
Distribution



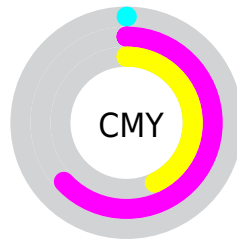
- Red (100%)
- Green (37%)
- Blue (57%)



- Red (100%)
- Yellow (37%)
- Blue (57%)



- Cyan (0%)
- Magenta (63%)
- Yellow (43%)
- Black (0%)



- Cyan (0%)
- Magenta (63%)
- Yellow (43%)

Brightness & Saturation Gradients

These gradients show how the CIELCh color 63, 65.667, 4.538 changes by changing the brightness by 10 percent. The first figure shows a shift by +10% for each color and the second figure -10%.

Similar to the brightness gradients but the following saturation gradients show a change of the CIELCh color 63, 65.667, 4.538 by changing the saturation by 10% instead.

 63, 65.667, 4.538  63, 65.667, 4.538

 100, 65.667, 4.538  53, 65.667, 4.538

 83, 65.667, 4.538  43, 65.667, 4.538


 93, 65.667, 4.538  33, 65.667, 4.538

 23, 65.667, 4.538

 13, 65.667, 4.538

 3, 65.667, 4.538

 0, 65.667, 4.538

 63, 65.667, 4.538  63, 65.667, 4.538

 59, 73.463, 7.469  67, 55.754, 1.812

■ 56, 79.915, 11.483

■ 73, 45.375,
359.821

■ 55, 84.646, 16.452

■ 79, 34.619,
358.195

■ 54, 87.320, 20.297

■ 85, 23.844,
356.836

■ 91, 13.284,
355.667

■ 98, 3.076, 354.528

■ 100, 0.012,
296.813

Harmonies

Complementary

The Complementary color scheme is a pair of colors which are on the opposite of each other on the color wheel.



63, 65.667, 4.538



91, 55.341, 166.942

Rectangle

The Rectangle color scheme consists of four colors that form a rectangle on the color wheel.



63, 65.667, 4.538



63, 65.667, 54.538



63, 65.667, 184.538



63, 65.667, 234.538

Sweetspot

The Sweet Spot groups the original color and five complimentary colors.



63, 65.286, 4.305



87, 19.491, 356.339



60, 91.751, 317.161



45, 13.478, 356.684



0, 0.000, 0.000



53, 0.007, 296.813

Same Dimension

The Same Dimension uses a secret algorithm to generate beautiful new colors.



63, 65.286, 4.305



58, 75.529, 8.543



66, 62.640, 38.405



50, 5.731, 355.277



40, 69.968, 19.212



10, 31.379, 11.132

Inverse Universe

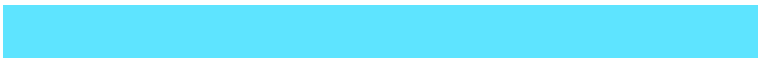
The Inverse Universe completely reimagines the original color for something new.



63, 65.286, 4.305



58, 75.529, 8.543



85, 37.301, 219.802



50, 5.731, 355.277



40, 69.968, 19.212



10, 31.379, 11.132

Previews

White Background



This preview shows how the CIELCh color 63, 65.667, 4.538 looks on a white background.

Color Contrast Check

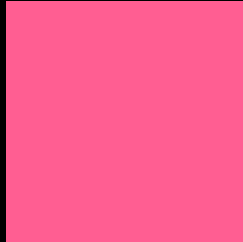
Large Text (above 18pt) WCAG AA × Fail

Any Text WCAG AA × Fail

Large Text (above 18pt) WCAG AAA × Fail

Any Text WCAG AAA × Fail

Black Background



This preview shows how the CIELCh color 63, 65.667, 4.538 looks on a black background.

Color Contrast Check

Large Text (above 18pt) WCAG AA ✓ Pass

Any Text WCAG AA ✓ Pass

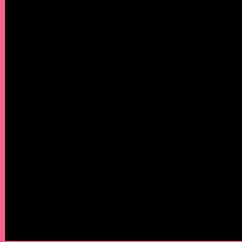
Large Text (above 18pt) WCAG AAA ✓ Pass

Any Text WCAG AAA ✓ Pass

If you want to check with other color combinations, try the [Color Contrast Checker](#).

CIELCh 63, 65.667, 4.538

Background



This preview shows how black text looks on a background with the CIELCh color 63, 65.667, 4.538.

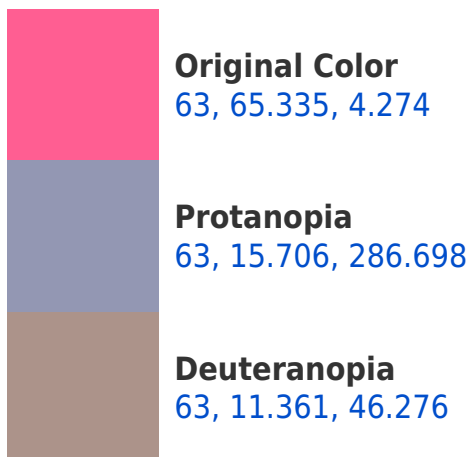


This preview shows how white text looks on a background with the CIELCh color 63, 65.667, 4.538.

Color Blindness Simulation

Color vision deficiency is a very complex topic, and I could not describe the different causes any better than Wikipedia does, so if you want to learn more, you should check out their [article about color blindness](#).

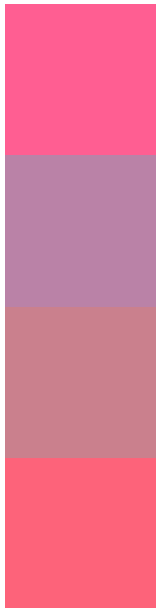
Dichromacy





Tritanopia
63, 63.489, 24.749

Trichromacy



Original Color
63, 65.335, 4.274

Protanomaly
61, 29.509, 338.185

Deuteranomaly
62, 30.706, 9.448

Tritanomaly
63, 63.117, 17.060

Monochromacy



Original Color
63, 65.335, 4.274

Achromatopsia
61, 0.008, 296.813

Achromatomaly
60, 25.598, 357.912

CSS Examples

Text

The CSS property to change the color of the text to CIELCh 63, 65.667, 4.538 is called "color". The color property can be set on classes, ids or directly on the HTML element.

This example shows how text in the color `rgb(255, 94, 146)` looks like.

```
.text, #text, p{  
    color:rgb(255, 94, 146)  
}
```

If you want to add a text shadow in that color use the text-shadow property, you can generate a text shadow directly with our [CSS Text Shadow Generator](#).

Here you see how black text with a 4 pixel rgb(255, 94, 146) colored shadow looks like.

```
.shadow{ text-shadow: 4px 4px 2px rgb(255, 94, 146) }
```

Border

The CSS property to change the border of an element to CIELCh 63, 65.667, 4.538 is called "border". The border property can be set on classes, ids or directly on the HTML element.

This example shows the color as border, it can be applied via the CSS property "border" or "border-color".

```
.border, #border, table{ border:4px solid rgb(255, 94, 146) }
```

If only the border color should be changed use the property border-color.

```
.border{ border-color:rgb(255, 94, 146) }
```

If you want to add a box shadow in that color use:

Here you see how a box with a 4 pixel rgb(255, 94, 146) colored shadow looks like.

```
.boxshadow{ -moz-box-shadow:4px 4px 4px  
4px rgb(255, 94, 146); -webkit-box-  
shadow:4px 4px 4px 4px rgb(255, 94, 146);  
box-shadow:4px 4px 4px 4px rgb(255, 94,  
146) }
```

Background

The CSS property to change the background color of an element to CIELCh 63, 65.667, 4.538 is called "background". The background property can be set on classes, ids or directly on the HTML element.

```
.background, #background, body{  
background: rgb(255, 94, 146) }
```

If only the background color should be changed can be used:

```
.background{ background-color: rgb(255, 94,  
146) }
```

This example shows the color as background, it is applied via the CSS property "background".

To optimize and compress your CSS code, you can use our [online CSS compressor and optimizer](#) based on csstidy. If you want to create a linear or radial gradient as background or border, check our [CSS Gradient Generator](#).

Hey! You found this booklet interesting? Support Converting Colors with the new Membership Option!

The pro membership hides all ads, plus gives you double the colors in the color bucket, and more awesome pro features!

[Learn more, Memberships starting at \\$2.50/m!](#)

**Follow me
on Twitter!**

@ConvertingColor