

Converting Colors

CIELCh(70, 10.362, 73.825)

Have a look what the booklet for
CIELCh(70, 10.362, 73.825) contains.

CIELCh(70, 10.566, 75.041)	3
<i>Conversions</i>	4
<i>Details</i>	6
<i>Harmonies</i>	11
<i>Previews</i>	20
<i>Color Blindness Simulation</i>	23
<i>CSS Examples</i>	26

Color

CIELCh(70, 10.566, 75.041)

Conversions

Conversions Part 1

Format	Color
Hex	B8A999
RGB	184, 169, 153
RGB Percent	72%, 66%, 60%
CMY	0.2793, 0.3381, 0.4008
CMYK	0.00, 0.08, 0.17, 0.28
HSL	31°, 18%, 66%
HSV	31°, 17%, 72%
XYZ	39.5923, 40.7494, 35.8219
YIQ	171.6610, 14.0760, -1.7960

Conversions

Conversions Part 2

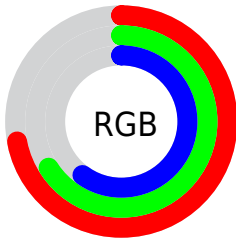
Format	Color
RYB	182, 184, 153
Decimal	12102041
CIELab	70.00, 2.73, 10.21
CIELCh	70, 10.566, 75.041
Yxy	40.7494, 0.3408, 0.3508
Android (android.graphics.Color)	4290292121 (0xFFB8A999)
YUV	171.6610, -9.1999, 10.8213
Hunter-Lab	63.8353, -1.0014, 11.4134

Details

The CIELCh color **70, 10.566, 75.041** is a light color, and the websafe version is hex **999999**. A complement of this color would be **68, 10.167, 259.529**, and the grayscale version is **70, 0.009, 296.813**.

A 20% lighter version of the original color is **90, 10.627, 75.291**, and **50, 10.636, 74.576** is the 20% darker color. If you saturate the color by 10%, you get **67, 17.208, 73.802**, and if you desaturate by 10%, it is **73, 4.206, 76.247**.

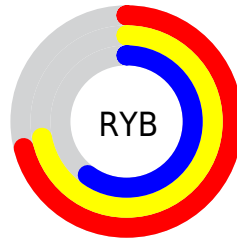
Distribution



Red (72%)

Green (66%)

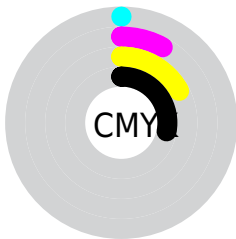
Blue (60%)



Red (71%)

Yellow (72%)

Blue (60%)

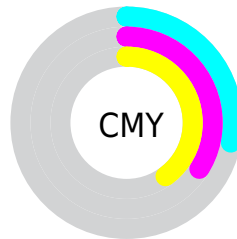


Cyan (0%)

Magenta (8%)

Yellow (17%)

Black (28%)



Cyan (28%)

Magenta (34%)

Yellow (40%)

Brightness & Saturation Gradients

These gradients show how the CIELCh color 70, 10.566, 75.041 changes by changing the brightness by 10 percent. The first figure shows a shift by +10% for each color and the second figure -10%.

Similar to the brightness gradients but the following saturation gradients show a change of the CIELCh color 70, 10.566, 75.041 by changing the saturation by 10% instead.

■ 70, 10.566, 75.041

■ 70, 10.566, 75.041

■ 100, 10.566,
75.041

■ 60, 10.566, 75.041

■ 90, 10.566, 75.041

■ 50, 10.566, 75.041

■ 40, 10.566, 75.041

■ 30, 10.566, 75.041

■ 20, 10.566, 75.041

■ 10, 10.566, 75.041

■ 0, 10.566, 75.041

■ 70, 10.566, 75.041

■ 70, 10.566, 75.041

■ 67, 17.208, 73.802

■ 73, 4.206, 76.247

65, 24.141, 72.527

76, 1.893, 257.714

62, 31.351, 71.234

78, 7.755, 258.759

59, 38.779, 69.913

81, 13.403,
259.878

57, 46.279, 68.530

84, 18.862,
260.965

55, 53.537, 67.002

53, 59.965, 65.146

87, 20.753,
255.373

51, 64.782, 62.702

89, 19.259,
239.329

50, 66.221, 61.963

92, 19.379,
222.321

94, 21.034,
206.948

Harmonies

Complementary

The Complementary color scheme is a pair of colors which are on the opposite of each other on the color wheel.



70, 10.566, 75.041



68, 10.167, 259.529

Rectangle

The Rectangle color scheme consists of four colors that form a rectangle on the color wheel.



70, 10.566, 75.041



70, 10.566, 125.041



70, 10.566, 255.041



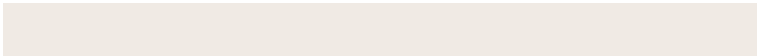
70, 10.566, 305.041

Sweetspot

The Sweet Spot groups the original color and five complimentary colors.



70, 10.567, 75.053



93, 3.786, 76.436



66, 14.624, 345.073



49, 2.586, 76.364



97, 0.011, 296.813



50, 0.007, 296.813

Same Dimension

The Same Dimension uses a secret algorithm to generate beautiful new colors.



70, 10.567, 75.053



88, 15.671, 74.622



74, 16.653, 108.565



37, 3.488, 75.963



42, 58.415, 62.485



5, 8.809, 63.019

Inverse Universe

The Inverse Universe completely reimagines the original color for something new.



68, 10.167, 259.529



85, 14.941, 260.092



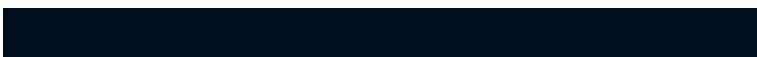
64, 17.301, 292.011



37, 3.423, 258.431



33, 50.882, 284.991



3, 10.369, 268.635

Previews

White Background



This preview shows how the CIELCh color 70, 10.566, 75.041 looks on a white background.

Color Contrast Check

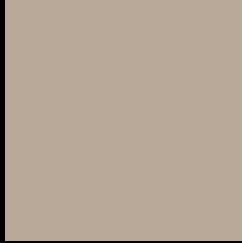
Large Text (above 18pt) WCAG AA × Fail

Any Text WCAG AA × Fail

Large Text (above 18pt) WCAG AAA × Fail

Any Text WCAG AAA × Fail

Black Background



This preview shows how the CIELCh color 70, 10.566, 75.041 looks on a black background.

Color Contrast Check

Large Text (above 18pt) WCAG AA ✓ Pass

Any Text WCAG AA ✓ Pass

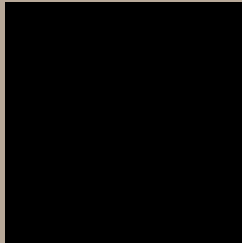
Large Text (above 18pt) WCAG AAA ✓ Pass

Any Text WCAG AAA ✓ Pass

If you want to check with other color combinations, try the [Color Contrast Checker](#).

CIELCh 70, 10.566, 75.041

Background



This preview shows how black text looks on a background with the CIELCh color 70, 10.566, 75.041.



This preview shows how white text looks on a background with the CIELCh color 70, 10.566, 75.041.

Color Blindness Simulation

Color vision deficiency is a very complex topic, and I could not describe the different causes any better than Wikipedia does, so if you want to learn more, you should check out their [article about color blindness](#).

Dichromacy



Original Color

70, 10.566, 75.041

Protanopia

70, 9.655, 92.670

Deuteranopia

70, 13.078, 47.401



Tritanopia
70, 10.949, 339.925

Trichromacy



Original Color
70, 10.566, 75.041

Protanomaly
70, 9.567, 84.961

Deuteranomaly
70, 11.608, 54.212

Tritanomaly
70, 7.850, 8.042

Monochromacy



Original Color
70, 10.566, 75.041

Achromatopsia
70, 0.009, 296.813

Achromatomaly
70, 3.987, 74.520

CSS Examples

Text

The CSS property to change the color of the text to CIELCh 70, 10.566, 75.041 is called "color". The color property can be set on classes, ids or directly on the HTML element.

This example shows how text in the color `rgb(184, 169, 153)` looks like.

```
.text, #text, p{  
    color:rgb(184, 169, 153)  
}
```

If you want to add a text shadow in that color use the text-shadow property, you can generate a text shadow directly with our [CSS Text Shadow Generator](#).

Here you see how black text with a 4 pixel rgb(184, 169, 153) colored shadow looks like.

```
.shadow{ text-shadow: 4px 4px 2px rgb(184, 169, 153) }
```

Border

The CSS property to change the border of an element to CIELCh 70, 10.566, 75.041 is called "border". The border property can be set on classes, ids or directly on the HTML element.

This example shows the color as border, it can be applied via the CSS property "border" or "border-color".

```
.border, #border, table{ border:4px solid rgb(184, 169, 153) }
```

If only the border color should be changed use the property `border-color`.

```
.border{ border-color:rgb(184, 169, 153) }
```

If you want to add a box shadow in that color use:

Here you see how a box with a 4 pixel `rgb(184, 169, 153)` colored shadow looks like.

```
.boxshadow{ -moz-box-shadow:4px 4px 4px  
4px rgb(184, 169, 153); -webkit-box-  
shadow:4px 4px 4px 4px rgb(184, 169, 153);  
box-shadow:4px 4px 4px 4px rgb(184, 169,  
153) }
```

Background

The CSS property to change the background color of an element to CIELCh 70, 10.566, 75.041 is called "background". The background property can be set on classes, ids or directly on the HTML element.

```
.background, #background, body{  
background: rgb(184, 169, 153) }
```

If only the background color should be changed can be used:

```
.background{ background-color: rgb(184,  
169, 153) }
```

This example shows the color as background, it is applied via the CSS property "background".

To optimize and compress your CSS code, you can use our [online CSS compressor and optimizer](#) based on csstidy. If you want to create a linear or radial gradient as background or border, check our [CSS Gradient Generator](#).

Hey! You found this booklet interesting? Support Converting Colors with the new Membership Option!

The pro membership hides all ads, plus gives you double the colors in the color bucket, and more awesome pro features!

[Learn more, Memberships starting at \\$2.50/m!](#)

**Follow me
on Twitter!**

@ConvertingColor