

Converting Colors

CIELCh(70, 10.943, 5.308)

Have a look what the booklet for
CIELCh(70, 10.943, 5.308) contains.

CIELCh(70, 11.255, 3.546)	3
<i>Conversions</i>	4
<i>Details</i>	6
<i>Harmonies</i>	11
<i>Previews</i>	20
<i>Color Blindness Simulation</i>	23
<i>CSS Examples</i>	26

Color

CIELCh(70, 11.255, 3.546)

Conversions

Conversions Part 1

Format	Color
Hex	C0A4AA
RGB	192, 164, 170
RGB Percent	75%, 64%, 67%
CMY	0.2464, 0.3562, 0.3327
CMYK	0.00, 0.15, 0.11, 0.25
HSL	347°, 18%, 70%
HSV	347°, 15%, 75%
XYZ	42.3600, 40.7494, 43.7472
YIQ	173.0560, 14.7620, 7.8020

Conversions

Conversions Part 2

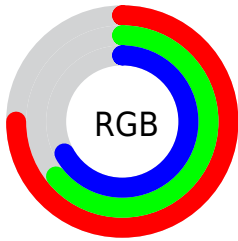
Format	Color
RYB	192, 164, 170
Decimal	12625066
CIELab	70.00, 11.23, 0.70
CIELCh	70, 11.255, 3.546
Yxy	40.7494, 0.3339, 0.3212
Android (android.graphics.Color)	4290815146 (0xFFC0A4AA)
YUV	173.0560, -1.5066, 16.6139
Hunter-Lab	63.8353, 6.7379, 4.0524

Details

The CIELCh color **70, 11.255, 3.546** is a light color, and the websafe version is hex **CC9999**. A complement of this color would be **76, 10.650, 180.905**, and the grayscale version is **71, 0.009, 296.813**.

A 20% lighter version of the original color is **90, 11.361, 4.361**, and **50, 11.269, 2.753** is the 20% darker color. If you saturate the color by 10%, you get **65, 19.425, 4.758**, and if you desaturate by 10%, it is **75, 3.443, 2.448**.

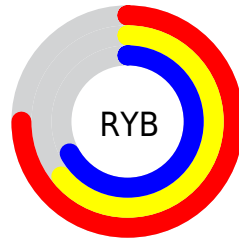
Distribution



Red (75%)

Green (64%)

Blue (67%)



Red (75%)

Yellow (64%)

Blue (67%)

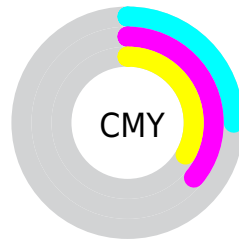


Cyan (0%)

Magenta (15%)

Yellow (11%)

Black (25%)



Cyan (25%)

Magenta (36%)



Yellow (33%)

Brightness & Saturation Gradients

These gradients show how the CIELCh color 70, 11.255, 3.546 changes by changing the brightness by 10 percent. The first figure shows a shift by +10% for each color and the second figure -10%.

Similar to the brightness gradients but the following saturation gradients show a change of the CIELCh color 70, 11.255, 3.546 by changing the saturation by 10% instead.

 70, 11.255, 3.546  70, 11.255, 3.546

 100, 11.255, 3.546  60, 11.255, 3.546

 90, 11.255, 3.546  50, 11.255, 3.546

 40, 11.255, 3.546


 30, 11.255, 3.546

 20, 11.255, 3.546

 10, 11.255, 3.546

 0, 11.255, 3.546

 70, 11.255, 3.546  70, 11.255, 3.546

 65, 19.425, 4.758  75, 3.443, 2.448

60, 27.879, 6.191

81, 3.973, 181.847

55, 36.460, 7.940

86, 10.995,
181.010

51, 44.931, 10.117

92, 17.642,
180.322

47, 52.975, 12.864

44, 60.256, 16.334

96, 21.486,
185.152

42, 66.541, 20.642

96, 20.457,
198.159

41, 71.822, 25.738

40, 74.538, 28.535

Harmonies

Complementary

The Complementary color scheme is a pair of colors which are on the opposite of each other on the color wheel.



70, 11.255, 3.546



76, 10.650, 180.905

Rectangle

The Rectangle color scheme consists of four colors that form a rectangle on the color wheel.



70, 11.255, 3.546



70, 11.255, 53.546



70, 11.255, 183.546



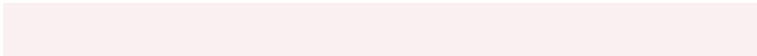
70, 11.255, 233.546

Sweetspot

The Sweet Spot groups the original color and five complimentary colors.



70, 11.253, 3.553



96, 3.725, 2.383



70, 17.376, 318.933



50, 2.651, 2.479



99, 0.012, 296.813



52, 0.007, 296.813

Same Dimension

The Same Dimension uses a secret algorithm to generate beautiful new colors.



70, 11.253, 3.553



87, 16.357, 3.860



72, 8.936, 48.628



38, 4.351, 2.985



33, 64.842, 27.723



3, 14.327, 7.878

Inverse Universe

The Inverse Universe completely reimagines the original color for something new.



70, 11.253, 3.553



87, 16.357, 3.860



74, 8.222, 230.606



38, 4.351, 2.985



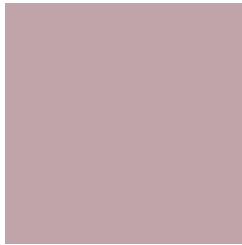
33, 64.842, 27.723



3, 14.327, 7.878

Previews

White Background



This preview shows how the CIELCh color 70, 11.255, 3.546 looks on a white background.

Color Contrast Check

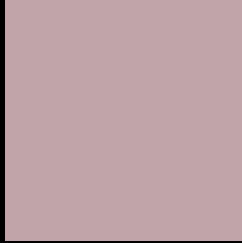
Large Text (above 18pt) WCAG AA × Fail

Any Text WCAG AA × Fail

Large Text (above 18pt) WCAG AAA × Fail

Any Text WCAG AAA × Fail

Black Background



This preview shows how the CIELCh color 70, 11.255, 3.546 looks on a black background.

Color Contrast Check

Large Text (above 18pt) WCAG AA ✓ Pass

Any Text WCAG AA ✓ Pass

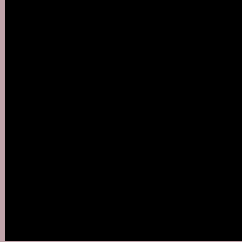
Large Text (above 18pt) WCAG AAA ✓ Pass

Any Text WCAG AAA ✓ Pass

If you want to check with other color combinations, try the [Color Contrast Checker](#).

CIELCh 70, 11.255, 3.546

Background



This preview shows how black text looks on a background with the CIELCh color 70, 11.255, 3.546.



This preview shows how white text looks on a background with the CIELCh color 70, 11.255, 3.546.

Color Blindness Simulation

Color vision deficiency is a very complex topic, and I could not describe the different causes any better than Wikipedia does, so if you want to learn more, you should check out their [article about color blindness](#).

Dichromacy



Original Color

70, 11.255, 3.546

Protanopia

70, 2.481, 317.320

Deuteranopia

70, 8.719, 5.685



Tritanopia
70, 13.435, 348.792

Trichromacy



Original Color
70, 11.255, 3.546

Protanomaly
70, 5.321, 348.907

Deuteranomaly
70, 9.984, 4.461

Tritanomaly
70, 12.929, 352.963

Monochromacy



Original Color
70, 11.255, 3.546

Achromatopsia
71, 0.009, 296.813

Achromatomaly
70, 3.955, 3.632

CSS Examples

Text

The CSS property to change the color of the text to CIELCh 70, 11.255, 3.546 is called "color". The color property can be set on classes, ids or directly on the HTML element.

This example shows how text in the color `rgb(192, 164, 170)` looks like.

```
.text, #text, p{  
    color:rgb(192, 164, 170)  
}
```

If you want to add a text shadow in that color use the text-shadow property, you can generate a text shadow directly with our [CSS Text Shadow Generator](#).

Here you see how black text with a 4 pixel rgb(192, 164, 170) colored shadow looks like.

```
.shadow{ text-shadow: 4px 4px 2px rgb(192, 164, 170) }
```

Border

The CSS property to change the border of an element to CIELCh 70, 11.255, 3.546 is called "border". The border property can be set on classes, ids or directly on the HTML element.

This example shows the color as border, it can be applied via the CSS property "border" or "border-color".

```
.border, #border, table{ border:4px solid rgb(192, 164, 170) }
```

If only the border color should be changed use the property `border-color`.

```
.border{ border-color:rgb(192, 164, 170) }
```

If you want to add a box shadow in that color use:

Here you see how a box with a 4 pixel `rgb(192, 164, 170)` colored shadow looks like.

```
.boxshadow{ -moz-box-shadow:4px 4px 4px  
4px rgb(192, 164, 170); -webkit-box-  
shadow:4px 4px 4px 4px rgb(192, 164, 170);  
box-shadow:4px 4px 4px 4px rgb(192, 164,  
170) }
```

Background

The CSS property to change the background color of an element to CIELCh 70, 11.255, 3.546 is called "background". The background property can be set on classes, ids or directly on the HTML element.

```
.background, #background, body{  
background: rgb(192, 164, 170) }
```

If only the background color should be changed can be used:

```
.background{ background-color: rgb(192,  
164, 170) }
```

This example shows the color as background, it is applied via the CSS property "background".

To optimize and compress your CSS code, you can use our [online CSS compressor and optimizer](#) based on csstidy. If you want to create a linear or radial gradient as background or border, check our [CSS Gradient Generator](#).

Hey! You found this booklet interesting? Support Converting Colors with the new Membership Option!

The pro membership hides all ads, plus gives you double the colors in the color bucket, and more awesome pro features!

[Learn more, Memberships starting at \\$2.50/m!](#)

**Follow me
on Twitter!**

@ConvertingColor