

Converting Colors

CIELCh(70, 10.977, 37.531)

Have a look what the booklet for
CIELCh(70, 10.977, 37.531) contains.

CIELCh(70, 11.148, 37.234)	3
<i>Conversions</i>	4
<i>Details</i>	6
<i>Harmonies</i>	11
<i>Previews</i>	20
<i>Color Blindness Simulation</i>	23
<i>CSS Examples</i>	26

Color

CIELCh(70, 11.148, 37.234)

Conversions

Conversions Part 1

Format	Color
Hex	C0A59F
RGB	192, 165, 159
RGB Percent	75%, 65%, 62%
CMY	0.2461, 0.3520, 0.3755
CMYK	0.00, 0.14, 0.17, 0.25
HSL	11°, 21%, 69%
HSV	11°, 17%, 75%
XYZ	41.5804, 40.7494, 38.5852
YIQ	172.3890, 18.0180, 3.8580

Conversions

Conversions Part 2

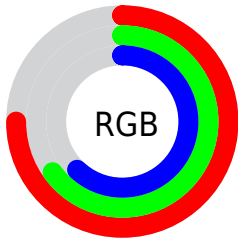
Format	Color
RYB	192, 166, 159
Decimal	12625311
CIELab	70.00, 8.88, 6.75
CIELCh	70, 11.148, 37.234
Yxy	40.7494, 0.3439, 0.3370
Android (android.graphics.Color)	4290815391 (0xFFC0A59F)
YUV	172.3890, -6.6008, 17.1988
Hunter-Lab	63.8353, 4.5577, 8.8469

Details

The CIELCh color **70, 11.148, 37.234** is a light color, and the websafe version is hex **CC9999**. A complement of this color would be **74, 9.964, 217.882**, and the grayscale version is **71, 0.009, 296.813**.

A 20% lighter version of the original color is **90, 11.201, 36.118**, and **50, 11.060, 35.718** is the 20% darker color. If you saturate the color by 10%, you get **66, 18.389, 37.363**, and if you desaturate by 10%, it is **75, 4.467, 37.204**.

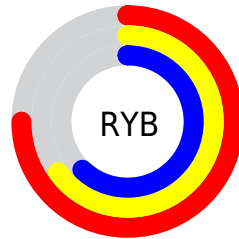
Distribution



Red (75%)

Green (65%)

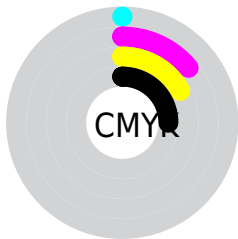
Blue (62%)



Red (75%)

Yellow (65%)

Blue (62%)

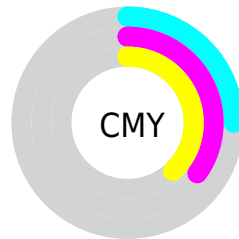


Cyan (0%)

Magenta (14%)

Yellow (17%)

Black (25%)



Cyan (25%)

Magenta (35%)

Yellow (38%)


Brightness & Saturation Gradients

These gradients show how the CIELCh color 70, 11.148, 37.234 changes by changing the brightness by 10 percent. The first figure shows a shift by +10% for each color and the second figure -10%.

Similar to the brightness gradients but the following saturation gradients show a change of the CIELCh color 70, 11.148, 37.234 by changing the saturation by 10% instead.

 70, 11.148, 37.234

 70, 11.148, 37.234

 100, 11.148,
37.234

 60, 11.148, 37.234

 90, 11.148, 37.234

 50, 11.148, 37.234

 40, 11.148, 37.234

 30, 11.148, 37.234

 20, 11.148, 37.234

 10, 11.148, 37.234

 0, 11.148, 37.234

 70, 11.148, 37.234

 70, 11.148, 37.234

 66, 18.389, 37.363

 75, 4.467, 37.204

61, 26.224, 37.636

79, 1.697, 217.763

57, 34.658, 38.112

84, 7.397, 217.720

53, 43.645, 38.831

88, 12.684,
217.941

50, 53.059, 39.807

93, 17.564,
217.601

47, 62.610, 40.979

44, 71.661, 42.096

96, 20.434,
198.160

42, 78.977, 42.634

42, 80.902, 42.909

Harmonies

Complementary

The Complementary color scheme is a pair of colors which are on the opposite of each other on the color wheel.



70, 11.148, 37.234



74, 9.964, 217.882

Rectangle

The Rectangle color scheme consists of four colors that form a rectangle on the color wheel.



70, 11.148, 37.234



70, 11.148, 87.234



70, 11.148, 217.234



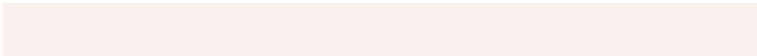
70, 11.148, 267.234

Sweetspot

The Sweet Spot groups the original color and five complimentary colors.



70, 11.147, 37.246



95, 3.822, 37.173



69, 19.453, 330.419



50, 2.614, 37.187



99, 0.012, 296.813



52, 0.007, 296.813

Same Dimension

The Same Dimension uses a secret algorithm to generate beautiful new colors.



70, 11.147, 37.246



86, 17.164, 37.279



74, 12.618, 88.964



38, 3.587, 37.217



35, 70.458, 43.162



4, 12.533, 30.592

Inverse Universe

The Inverse Universe completely reimagines the original color for something new.



74, 9.964, 217.882



92, 14.887, 218.041



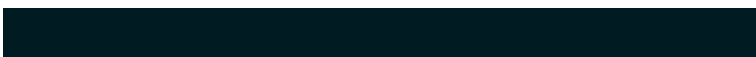
70, 12.576, 273.508



40, 3.383, 217.681



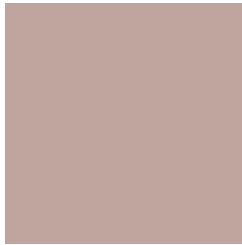
51, 30.878, 231.198



8, 10.470, 223.939

Previews

White Background



This preview shows how the CIELCh color 70, 11.148, 37.234 looks on a white background.

Color Contrast Check

Large Text (above 18pt) WCAG AA × Fail

Any Text WCAG AA × Fail

Large Text (above 18pt) WCAG AAA × Fail

Any Text WCAG AAA × Fail

Black Background



This preview shows how the CIE LCh color 70, 11.148, 37.234 looks on a black background.

Color Contrast Check

Large Text (above 18pt) WCAG AA ✓ Pass

Any Text WCAG AA ✓ Pass

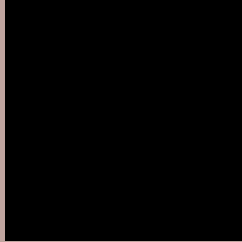
Large Text (above 18pt) WCAG AAA ✓ Pass

Any Text WCAG AAA ✓ Pass

If you want to check with other color combinations, try the [Color Contrast Checker](#).

CIELCh 70, 11.148, 37.234

Background



This preview shows how black text looks on a background with the CIELCh color 70, 11.148, 37.234.



This preview shows how white text looks on a background with the CIELCh color 70, 11.148, 37.234.

Color Blindness Simulation

Color vision deficiency is a very complex topic, and I could not describe the different causes any better than Wikipedia does, so if you want to learn more, you should check out their [article about color blindness](#).

Dichromacy



Original Color

70, 11.148, 37.234

Protanopia

70, 5.258, 88.151

Deuteranopia

70, 11.148, 37.234



Tritanopia
70, 13.508, 351.697

Trichromacy



Original Color
70, 11.148, 37.234

Protanomaly
70, 6.671, 60.424

Deuteranomaly
70, 11.148, 37.234

Tritanomaly
70, 11.511, 6.770

Monochromacy



Original Color
70, 11.148, 37.234

Achromatopsia
71, 0.009, 296.813

Achromatomaly
70, 3.967, 35.529

CSS Examples

Text

The CSS property to change the color of the text to CIELCh 70, 11.148, 37.234 is called "color". The color property can be set on classes, ids or directly on the HTML element.

This example shows how text in the color `rgb(192, 165, 159)` looks like.

```
.text, #text, p{  
    color:rgb(192, 165, 159)  
}
```

If you want to add a text shadow in that color use the text-shadow property, you can generate a text shadow directly with our [CSS Text Shadow Generator](#).

Here you see how black text with a 4 pixel rgb(192, 165, 159) colored shadow looks like.

```
.shadow{ text-shadow: 4px 4px 2px rgb(192, 165, 159) }
```

Border

The CSS property to change the border of an element to CIELCh 70, 11.148, 37.234 is called "border". The border property can be set on classes, ids or directly on the HTML element.

This example shows the color as border, it can be applied via the CSS property "border" or "border-color".

```
.border, #border, table{ border:4px solid rgb(192, 165, 159) }
```

If only the border color should be changed use the property `border-color`.

```
.border{ border-color:rgb(192, 165, 159) }
```

If you want to add a box shadow in that color use:

Here you see how a box with a 4 pixel `rgb(192, 165, 159)` colored shadow looks like.

```
.boxshadow{ -moz-box-shadow:4px 4px 4px 4px rgb(192, 165, 159); -webkit-box-shadow:4px 4px 4px 4px rgb(192, 165, 159); box-shadow:4px 4px 4px 4px rgb(192, 165, 159) }
```

Background

The CSS property to change the background color of an element to CIELCh 70, 11.148, 37.234 is called "background". The background property can be set on classes, ids or directly on the HTML element.

```
.background, #background, body{  
background: rgb(192, 165, 159) }
```

If only the background color should be changed can be used:

```
.background{ background-color: rgb(192,  
165, 159) }
```

This example shows the color as background, it is applied via the CSS property "background".

To optimize and compress your CSS code, you can use our [online CSS compressor and optimizer](#) based on csstidy. If you want to create a linear or radial gradient as background or border, check our [CSS Gradient Generator](#).

Hey! You found this booklet interesting? Support Converting Colors with the new Membership Option!

The pro membership hides all ads, plus gives you double the colors in the color bucket, and more awesome pro features!

[Learn more, Memberships starting at \\$2.50/m!](#)

**Follow me
on Twitter!**

@ConvertingColor