

Converting Colors

CIELCh(70, 11.052, 35.646)

Have a look what the booklet for
CIELCh(70, 11.052, 35.646) contains.

CIELCh(70, 10.974, 34.576)	3
<i>Conversions</i>	4
<i>Details</i>	6
<i>Harmonies</i>	11
<i>Previews</i>	20
<i>Color Blindness Simulation</i>	23
<i>CSS Examples</i>	26

Color

CIELCh(70, 10.974, 34.576)

Conversions

Conversions Part 1

Format	Color
Hex	C0A5A0
RGB	192, 165, 160
RGB Percent	75%, 65%, 63%
CMY	0.2463, 0.3522, 0.3719
CMYK	0.00, 0.14, 0.17, 0.25
HSL	9°, 20%, 69%
HSV	9°, 17%, 75%
XYZ	41.6330, 40.7494, 39.0101
YIQ	172.5030, 17.6970, 4.1690

Conversions

Conversions Part 2

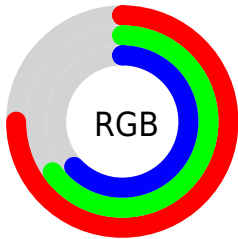
Format	Color
RYB	192, 166, 160
Decimal	12625312
CIELab	70.00, 9.04, 6.23
CIELCh	70, 10.974, 34.576
Yxy	40.7494, 0.3430, 0.3357
Android (android.graphics.Color)	4290815392 (0xFFC0A5A0)
YUV	172.5030, -6.1640, 17.0989
Hunter-Lab	63.8353, 4.7048, 8.4523

Details

The CIELCh color **70, 10.974, 34.576** is a light color, and the websafe version is hex **CC9999**. A complement of this color would be **74, 9.831, 214.798**, and the grayscale version is **71, 0.009, 296.813**.

A 20% lighter version of the original color is **90, 11.049, 33.584**, and **50, 10.882, 32.845** is the 20% darker color. If you saturate the color by 10%, you get **65, 18.309, 34.836**, and if you desaturate by 10%, it is **75, 4.207, 34.420**.

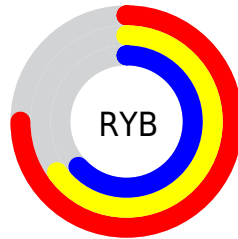
Distribution



Red (75%)

Green (65%)

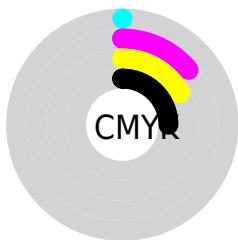
Blue (63%)



Red (75%)

Yellow (65%)

Blue (63%)

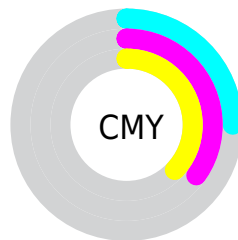


Cyan (0%)

Magenta (14%)

Yellow (17%)

Black (25%)



Cyan (25%)

Magenta (35%)

Yellow (37%)

Brightness & Saturation Gradients

These gradients show how the CIELCh color 70, 10.974, 34.576 changes by changing the brightness by 10 percent. The first figure shows a shift by +10% for each color and the second figure -10%.

Similar to the brightness gradients but the following saturation gradients show a change of the CIELCh color 70, 10.974, 34.576 by changing the saturation by 10% instead.

70, 10.974, 34.576

70, 10.974, 34.576

100, 10.974,
34.576

60, 10.974, 34.576

90, 10.974, 34.576

50, 10.974, 34.576

40, 10.974, 34.576

30, 10.974, 34.576

20, 10.974, 34.576

10, 10.974, 34.576

0, 10.974, 34.576

70, 10.974, 34.576

70, 10.974, 34.576

65, 18.309, 34.836

75, 4.207, 34.420

61, 26.244, 35.254

79, 2.034, 214.827

57, 34.775, 35.896

84, 7.801, 214.727

53, 43.853, 36.810

89, 13.147,
214.852

49, 53.341, 38.019

94, 18.013,
212.952

46, 62.952, 39.475

44, 72.065, 40.937

96, 20.454,
198.159

42, 79.417, 41.831

41, 81.644, 42.252

Harmonies

Complementary

The Complementary color scheme is a pair of colors which are on the opposite of each other on the color wheel.



70, 10.974, 34.576



74, 9.831, 214.798

Rectangle

The Rectangle color scheme consists of four colors that form a rectangle on the color wheel.



70, 10.974, 34.576



70, 10.974, 84.576



70, 10.974, 214.576



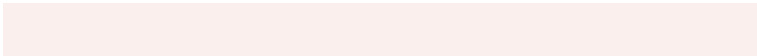
70, 10.974, 264.576

Sweetspot

The Sweet Spot groups the original color and five complimentary colors.



70, 10.973, 34.587



95, 3.887, 34.376



69, 19.081, 329.824



50, 2.659, 34.398



99, 0.012, 296.813



52, 0.007, 296.813

Same Dimension

The Same Dimension uses a secret algorithm to generate beautiful new colors.



70, 10.973, 34.587



87, 16.560, 34.662



74, 12.041, 87.658



38, 3.649, 34.470



34, 71.113, 42.439



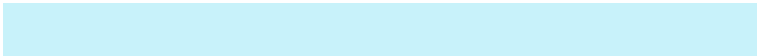
4, 12.707, 28.870

Inverse Universe

The Inverse Universe completely reimagines the original color for something new.



74, 9.831, 214.798



93, 14.448, 214.880



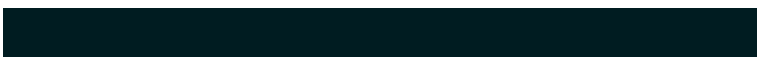
70, 11.963, 272.092



40, 3.438, 214.711



52, 30.833, 225.682



8, 10.634, 219.275

Previews

White Background



This preview shows how the CIELCh color 70, 10.974, 34.576 looks on a white background.

Color Contrast Check

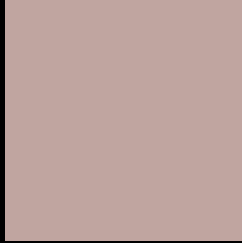
Large Text (above 18pt) WCAG AA × Fail

Any Text WCAG AA × Fail

Large Text (above 18pt) WCAG AAA × Fail

Any Text WCAG AAA × Fail

Black Background



This preview shows how the CIE LCh color 70, 10.974, 34.576 looks on a black background.

Color Contrast Check

Large Text (above 18pt) WCAG AA ✓ Pass

Any Text WCAG AA ✓ Pass

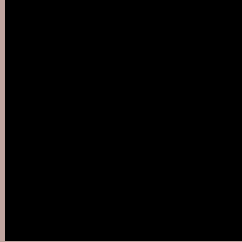
Large Text (above 18pt) WCAG AAA ✓ Pass

Any Text WCAG AAA ✓ Pass

If you want to check with other color combinations, try the [Color Contrast Checker](#).

CIELCh 70, 10.974, 34.576

Background



This preview shows how black text looks on a background with the CIELCh color 70, 10.974, 34.576.



This preview shows how white text looks on a background with the CIELCh color 70, 10.974, 34.576.

Color Blindness Simulation

Color vision deficiency is a very complex topic, and I could not describe the different causes any better than Wikipedia does, so if you want to learn more, you should check out their [article about color blindness](#).

Dichromacy



Original Color

70, 10.974, 34.576

Protanopia

70, 4.753, 85.835

Deuteranopia

70, 10.974, 34.576



Tritanopia
70, 13.762, 349.685

Trichromacy



Original Color
70, 10.974, 34.576

Protanomaly
70, 6.318, 56.773

Deuteranomaly
70, 10.974, 34.576

Tritanomaly
70, 11.630, 4.150

Monochromacy



Original Color
70, 10.974, 34.576

Achromatopsia
71, 0.009, 296.813

Achromatomaly
70, 3.967, 35.529

CSS Examples

Text

The CSS property to change the color of the text to CIELCh 70, 10.974, 34.576 is called "color". The color property can be set on classes, ids or directly on the HTML element.

This example shows how text in the color `rgb(192, 165, 160)` looks like.

```
.text, #text, p{  
    color:rgb(192, 165, 160)  
}
```

If you want to add a text shadow in that color use the text-shadow property, you can generate a text shadow directly with our [CSS Text Shadow Generator](#).

Here you see how black text with a 4 pixel rgb(192, 165, 160) colored shadow looks like.

```
.shadow{ text-shadow: 4px 4px 2px rgb(192, 165, 160) }
```

Border

The CSS property to change the border of an element to CIELCh 70, 10.974, 34.576 is called "border". The border property can be set on classes, ids or directly on the HTML element.

This example shows the color as border, it can be applied via the CSS property "border" or "border-color".

```
.border, #border, table{ border:4px solid rgb(192, 165, 160) }
```

If only the border color should be changed use the property `border-color`.

```
.border{ border-color:rgb(192, 165, 160) }
```

If you want to add a box shadow in that color use:

Here you see how a box with a 4 pixel `rgb(192, 165, 160)` colored shadow looks like.

```
.boxshadow{ -moz-box-shadow:4px 4px 4px  
4px rgb(192, 165, 160); -webkit-box-  
shadow:4px 4px 4px 4px rgb(192, 165, 160);  
box-shadow:4px 4px 4px 4px rgb(192, 165,  
160) }
```

Background

The CSS property to change the background color of an element to CIELCh 70, 10.974, 34.576 is called "background". The background property can be set on classes, ids or directly on the HTML element.

```
.background, #background, body{  
background: rgb(192, 165, 160) }
```

If only the background color should be changed can be used:

```
.background{ background-color: rgb(192,  
165, 160) }
```

This example shows the color as background, it is applied via the CSS property "background".

To optimize and compress your CSS code, you can use our [online CSS compressor and optimizer](#) based on csstidy. If you want to create a linear or radial gradient as background or border, check our [CSS Gradient Generator](#).

Hey! You found this booklet interesting? Support Converting Colors with the new Membership Option!

The pro membership hides all ads, plus gives you double the colors in the color bucket, and more awesome pro features!

[Learn more, Memberships starting at \\$2.50/m!](#)

**Follow me
on Twitter!**

@ConvertingColor