

Converting Colors

CIELCh(70, 11.465, 58.327)

Have a look what the booklet for
CIELCh(70, 11.465, 58.327) contains.

CIELCh(70, 11.284, 58.688)	3
<i>Conversions</i>	4
<i>Details</i>	6
<i>Harmonies</i>	11
<i>Previews</i>	20
<i>Color Blindness Simulation</i>	23
<i>CSS Examples</i>	26

Color

CIELCh(70, 11.284, 58.688)

Conversions

Conversions Part 1

Format	Color
Hex	BDA79A
RGB	189, 167, 154
RGB Percent	74%, 65%, 60%
CMY	0.2591, 0.3454, 0.3964
CMYK	0.00, 0.12, 0.19, 0.26
HSL	22°, 21%, 67%
HSV	22°, 19%, 74%
XYZ	40.5985, 40.7494, 36.2654
YIQ	172.0960, 17.2850, 0.6210

Conversions

Conversions Part 2

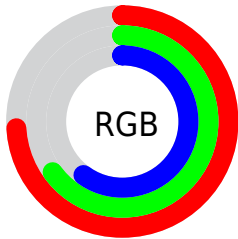
Format	Color
RYB	189, 175, 154
Decimal	12429210
CIELab	70.00, 5.86, 9.64
CIELCh	70, 11.284, 58.688
Yxy	40.7494, 0.3452, 0.3465
Android (android.graphics.Color)	4290619290 (0xFFBDA79A)
YUV	172.0960, -8.9213, 14.8248
Hunter-Lab	63.8353, 1.8122, 11.0015

Details

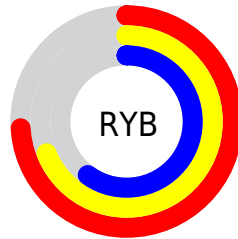
The CIELCh color **70, 11.284, 58.688** is a light color, and the websafe version is hex **999999**. A complement of this color would be **71, 10.346, 242.540**, and the grayscale version is **70, 0.009, 296.813**.

A 20% lighter version of the original color is **90, 11.546, 58.578**, and **50, 11.148, 58.707** is the 20% darker color. If you saturate the color by 10%, you get **67, 17.978, 57.849**, and if you desaturate by 10%, it is **74, 5.021, 59.552**.

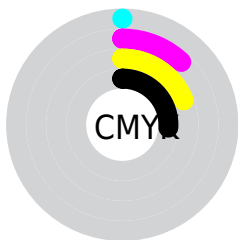
Distribution



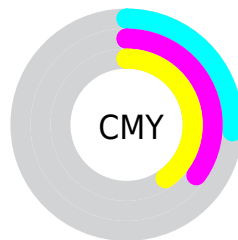
- Red (74%)
- Green (65%)
- Blue (60%)



- Red (74%)
- Yellow (69%)
- Blue (60%)



- Cyan (0%)
- Magenta (12%)
- Yellow (19%)
- Black (26%)



- Cyan (26%)
- Magenta (35%)
- Yellow (40%)

Brightness & Saturation Gradients

These gradients show how the CIELCh color 70, 11.284, 58.688 changes by changing the brightness by 10 percent. The first figure shows a shift by +10% for each color and the second figure -10%.

Similar to the brightness gradients but the following saturation gradients show a change of the CIELCh color 70, 11.284, 58.688 by changing the saturation by 10% instead.

■ 70, 11.284, 58.688

■ 70, 11.284, 58.688

■ 100, 11.284,
58.688

■ 60, 11.284, 58.688

■ 90, 11.284, 58.688

■ 50, 11.284, 58.688

■ 40, 11.284, 58.688

■ 30, 11.284, 58.688

■ 20, 11.284, 58.688

■ 10, 11.284, 58.688

■ 0, 11.284, 58.688

■ 70, 11.284, 58.688

■ 70, 11.284, 58.688

■ 67, 17.978, 57.849

■ 74, 5.021, 59.552

63, 25.133, 57.041

77, 0.849, 241.086

60, 32.761, 56.291

81, 6.369, 241.562

57, 40.828, 55.597

84, 11.579,
242.458

54, 49.213, 54.929

88, 16.517,
243.361

51, 57.613, 54.183

48, 65.375, 53.112

91, 17.885,
227.881

46, 71.659, 51.451

94, 19.880,
205.632

46, 72.596, 51.267

96, 21.417,
198.098

Harmonies

Complementary

The Complementary color scheme is a pair of colors which are on the opposite of each other on the color wheel.



70, 11.284, 58.688



71, 10.346, 242.540

Rectangle

The Rectangle color scheme consists of four colors that form a rectangle on the color wheel.



70, 11.284, 58.688



70, 11.284, 108.688



70, 11.284, 238.688



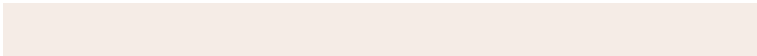
70, 11.284, 288.688

Sweetspot

The Sweet Spot groups the original color and five complimentary colors.



70, 11.284, 58.700



94, 4.327, 59.738



67, 17.994, 338.481



50, 2.876, 59.691



98, 0.011, 296.813



51, 0.007, 296.813

Same Dimension

The Same Dimension uses a secret algorithm to generate beautiful new colors.



70, 11.284, 58.700



87, 16.757, 58.371



75, 16.384, 102.135



38, 3.345, 59.485



39, 63.340, 51.783



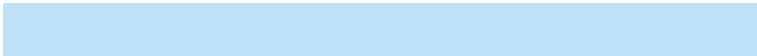
5, 10.130, 46.437

Inverse Universe

The Inverse Universe completely reimagines the original color for something new.



71, 10.346, 242.540



88, 15.058, 243.068



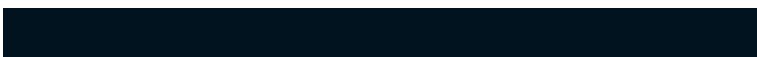
66, 16.867, 286.381



38, 3.212, 241.456



40, 38.621, 267.556



5, 10.198, 255.270

Previews

White Background



This preview shows how the CIELCh color 70, 11.284, 58.688 looks on a white background.

Color Contrast Check

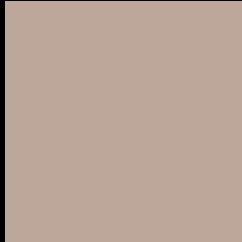
Large Text (above 18pt) WCAG AA × Fail

Any Text WCAG AA × Fail

Large Text (above 18pt) WCAG AAA × Fail

Any Text WCAG AAA × Fail

Black Background



This preview shows how the CIELCh color 70, 11.284, 58.688 looks on a black background.

Color Contrast Check

Large Text (above 18pt) WCAG AA ✓ Pass

Any Text WCAG AA ✓ Pass

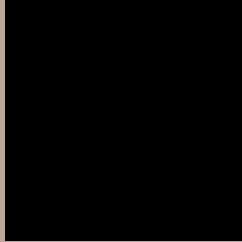
Large Text (above 18pt) WCAG AAA ✓ Pass

Any Text WCAG AAA ✓ Pass

If you want to check with other color combinations, try the [Color Contrast Checker](#).

CIELCh 70, 11.284, 58.688

Background



This preview shows how black text looks on a background with the CIELCh color 70, 11.284, 58.688.



This preview shows how white text looks on a background with the CIELCh color 70, 11.284, 58.688.

Color Blindness Simulation

Color vision deficiency is a very complex topic, and I could not describe the different causes any better than Wikipedia does, so if you want to learn more, you should check out their [article about color blindness](#).

Dichromacy



Original Color

70, 11.284, 58.688

Protanopia

70, 8.611, 90.784

Deuteranopia

70, 13.078, 47.401



Tritanopia
70, 12.499, 348.981

Trichromacy



Original Color
70, 11.284, 58.688

Protanomaly
70, 9.441, 79.294

Deuteranomaly
70, 12.291, 52.118

Tritanomaly
70, 10.169, 11.058

Monochromacy



Original Color
70, 11.284, 58.688

Achromatopsia
70, 0.009, 296.813

Achromatomaly
70, 4.093, 61.226

CSS Examples

Text

The CSS property to change the color of the text to CIELCh 70, 11.284, 58.688 is called "color". The color property can be set on classes, ids or directly on the HTML element.

This example shows how text in the color `rgb(189, 167, 154)` looks like.

```
.text, #text, p{  
    color:rgb(189, 167, 154)  
}
```

If you want to add a text shadow in that color use the text-shadow property, you can generate a text shadow directly with our [CSS Text Shadow Generator](#).

Here you see how black text with a 4 pixel rgb(189, 167, 154) colored shadow looks like.

```
.shadow{ text-shadow: 4px 4px 2px rgb(189, 167, 154) }
```

Border

The CSS property to change the border of an element to CIELCh 70, 11.284, 58.688 is called "border". The border property can be set on classes, ids or directly on the HTML element.

This example shows the color as border, it can be applied via the CSS property "border" or "border-color".

```
.border, #border, table{ border:4px solid rgb(189, 167, 154) }
```

If only the border color should be changed use the property `border-color`.

```
.border{ border-color:rgb(189, 167, 154) }
```

If you want to add a box shadow in that color use:

Here you see how a box with a 4 pixel `rgb(189, 167, 154)` colored shadow looks like.

```
.boxshadow{ -moz-box-shadow:4px 4px 4px  
4px rgb(189, 167, 154); -webkit-box-  
shadow:4px 4px 4px 4px rgb(189, 167, 154);  
box-shadow:4px 4px 4px 4px rgb(189, 167,  
154) }
```

Background

The CSS property to change the background color of an element to CIELCh 70, 11.284, 58.688 is called "background". The background property can be set on classes, ids or directly on the HTML element.

```
.background, #background, body{  
background: rgb(189, 167, 154) }
```

If only the background color should be changed can be used:

```
.background{ background-color: rgb(189,  
167, 154) }
```

This example shows the color as background, it is applied via the CSS property "background".

To optimize and compress your CSS code, you can use our [online CSS compressor and optimizer](#) based on csstidy. If you want to create a linear or radial gradient as background or border, check our [CSS Gradient Generator](#).

Hey! You found this booklet interesting? Support Converting Colors with the new Membership Option!

The pro membership hides all ads, plus gives you double the colors in the color bucket, and more awesome pro features!

[Learn more, Memberships starting at \\$2.50/m!](#)

**Follow me
on Twitter!**

@ConvertingColor