

Converting Colors

CIELCh(70, 11.618, 5.625)

Have a look what the booklet for
CIELCh(70, 11.618, 5.625) contains.

CIELCh(70, 11.511, 6.770)	3
<i>Conversions</i>	4
<i>Details</i>	6
<i>Harmonies</i>	11
<i>Previews</i>	20
<i>Color Blindness Simulation</i>	23
<i>CSS Examples</i>	26

Color

CIELCh(70, 11.511, 6.770)

Conversions

Conversions Part 1

Format	Color
Hex	C1A4A9
RGB	193, 164, 169
RGB Percent	76%, 64%, 66%
CMY	0.2432, 0.3569, 0.3373
CMYK	0.00, 0.15, 0.12, 0.24
HSL	350°, 19%, 70%
HSV	350°, 15%, 76%
XYZ	42.4257, 40.7494, 43.1622
YIQ	173.2410, 15.6790, 7.7030

Conversions

Conversions Part 2

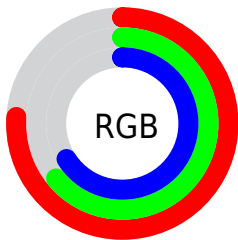
Format	Color
R_{YB}	193, 164, 169
Decimal	12690601
CIE _{Lab}	70.00, 11.43, 1.36
CIE _{LCh}	70, 11.511, 6.770
Yxy	40.7494, 0.3358, 0.3225
Android (android.graphics.Color)	4290880681 (0xFFC1A4A9)
YUV	173.2410, -2.0908, 17.3286
Hunter-Lab	63.8353, 6.9216, 4.5958

Details

The CIELCh color **70, 11.511, 6.770** is a light color, and the websafe version is hex **CC9999**. A complement of this color would be **76, 10.792, 184.125**, and the grayscale version is **71, 0.009, 296.813**.

A 20% lighter version of the original color is **90, 11.607, 7.362**, and **50, 11.542, 6.241** is the 20% darker color. If you saturate the color by 10%, you get **65, 19.678, 7.979**, and if you desaturate by 10%, it is **75, 3.744, 5.694**.

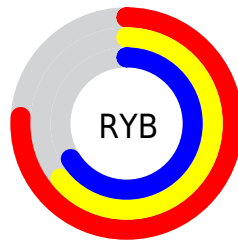
Distribution



Red (76%)

Green (64%)

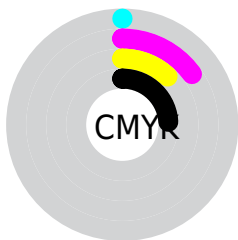
Blue (66%)



Red (76%)

Yellow (64%)

Blue (66%)

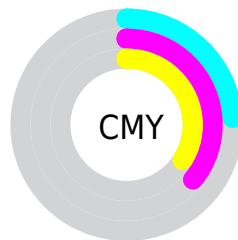


Cyan (0%)

Magenta (15%)

Yellow (12%)

Black (24%)



Cyan (24%)

Magenta (36%)

Yellow (34%)

Brightness & Saturation Gradients


These gradients show how the CIELCh color 70, 11.511, 6.770 changes by changing the brightness by 10 percent. The first figure shows a shift by +10% for each color and the second figure -10%.

Similar to the brightness gradients but the following saturation gradients show a change of the CIELCh color 70, 11.511, 6.770 by changing the saturation by 10% instead.

 70, 11.511, 6.770  70, 11.511, 6.770

 100, 11.511, 6.770  60, 11.511, 6.770

 90, 11.511, 6.770  50, 11.511, 6.770

 40, 11.511, 6.770

 30, 11.511, 6.770

 20, 11.511, 6.770

 10, 11.511, 6.770

 0, 11.511, 6.770

 70, 11.511, 6.770  70, 11.511, 6.770

 65, 19.678, 7.979  75, 3.744, 5.694

60, 28.180, 9.424

81, 3.594, 185.124

55, 36.873, 11.205

86, 10.513,
184.299

51, 45.530, 13.439

92, 17.036,
183.640

47, 53.849, 16.266

44, 61.513, 19.827

96, 20.777,
189.361

42, 68.293, 24.193

96, 20.214,
198.174

41, 74.132, 29.213

40, 76.880, 31.627

Harmonies

Complementary

The Complementary color scheme is a pair of colors which are on the opposite of each other on the color wheel.



70, 11.511, 6.770



76, 10.792, 184.125

Rectangle

The Rectangle color scheme consists of four colors that form a rectangle on the color wheel.



70, 11.511, 6.770



70, 11.511, 56.770



70, 11.511, 186.770



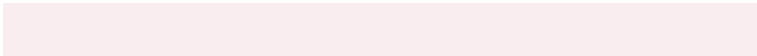
70, 11.511, 236.770

Sweetspot

The Sweet Spot groups the original color and five complimentary colors.



70, 11.509, 6.777



95, 4.596, 5.701



70, 18.147, 319.966



50, 3.141, 5.782



99, 0.012, 296.813



52, 0.007, 296.813

Same Dimension

The Same Dimension uses a secret algorithm to generate beautiful new colors.



70, 11.509, 6.777



86, 17.158, 7.147



72, 9.204, 52.518



38, 4.290, 6.169



33, 66.613, 30.845



3, 14.218, 10.082

Inverse Universe

The Inverse Universe completely reimagines the original color for something new.



70, 11.509, 6.777



86, 17.158, 7.147



74, 8.493, 234.993



38, 4.290, 6.169



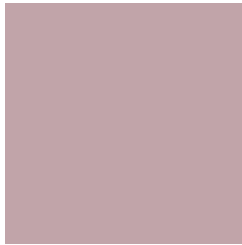
33, 66.613, 30.845



3, 14.218, 10.082

Previews

White Background



This preview shows how the CIELCh color 70, 11.511, 6.770 looks on a white background.

Color Contrast Check

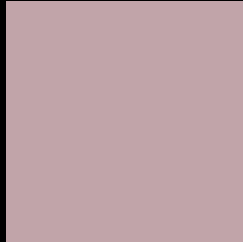
Large Text (above 18pt) WCAG AA × Fail

Any Text WCAG AA × Fail

Large Text (above 18pt) WCAG AAA × Fail

Any Text WCAG AAA × Fail

Black Background



This preview shows how the CIELCh color 70, 11.511, 6.770 looks on a black background.

Color Contrast Check

Large Text (above 18pt) WCAG AA ✓ Pass

Any Text WCAG AA ✓ Pass

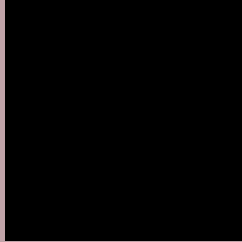
Large Text (above 18pt) WCAG AAA ✓ Pass

Any Text WCAG AAA ✓ Pass

If you want to check with other color combinations, try the [Color Contrast Checker](#).

CIELCh 70, 11.511, 6.770

Background



This preview shows how black text looks on a background with the CIELCh color 70, 11.511, 6.770.



This preview shows how white text looks on a background with the CIELCh color 70, 11.511, 6.770.

Color Blindness Simulation

Color vision deficiency is a very complex topic, and I could not describe the different causes any better than Wikipedia does, so if you want to learn more, you should check out their [article about color blindness](#).

Dichromacy



Original Color

70, 11.511, 6.770

Protanopia

70, 2.245, 332.356

Deuteranopia

70, 8.999, 9.722



Tritanopia
70, 13.762, 349.685

Trichromacy



Original Color
70, 11.511, 6.770

Protanomaly
70, 5.412, 356.013

Deuteranomaly
70, 9.868, 7.521

Tritanomaly
70, 13.055, 355.948

Monochromacy



Original Color
70, 11.511, 6.770

Achromatopsia
71, 0.009, 296.813

Achromatomaly
70, 3.955, 3.632

CSS Examples

Text

The CSS property to change the color of the text to CIELCh 70, 11.511, 6.770 is called "color". The color property can be set on classes, ids or directly on the HTML element.

This example shows how text in the color `rgb(193, 164, 169)` looks like.

```
.text, #text, p{  
    color:rgb(193, 164, 169)  
}
```

If you want to add a text shadow in that color use the text-shadow property, you can generate a text shadow directly with our [CSS Text Shadow Generator](#).

Here you see how black text with a 4 pixel rgb(193, 164, 169) colored shadow looks like.

```
.shadow{ text-shadow: 4px 4px 2px rgb(193, 164, 169) }
```

Border

The CSS property to change the border of an element to CIELCh 70, 11.511, 6.770 is called "border". The border property can be set on classes, ids or directly on the HTML element.

This example shows the color as border, it can be applied via the CSS property "border" or "border-color".

```
.border, #border, table{ border:4px solid rgb(193, 164, 169) }
```

If only the border color should be changed use the property `border-color`.

```
.border{ border-color:rgb(193, 164, 169) }
```

If you want to add a box shadow in that color use:

Here you see how a box with a 4 pixel `rgb(193, 164, 169)` colored shadow looks like.

```
.boxshadow{ -moz-box-shadow:4px 4px 4px  
4px rgb(193, 164, 169); -webkit-box-  
shadow:4px 4px 4px 4px rgb(193, 164, 169);  
box-shadow:4px 4px 4px 4px rgb(193, 164,  
169) }
```

Background

The CSS property to change the background color of an element to CIELCh 70, 11.511, 6.770 is called "background". The background property can be set on classes, ids or directly on the HTML element.

```
.background, #background, body{  
background: rgb(193, 164, 169) }
```

If only the background color should be changed can be used:

```
.background{ background-color: rgb(193,  
164, 169) }
```

This example shows the color as background, it is applied via the CSS property "background".

To optimize and compress your CSS code, you can use our [online CSS compressor and optimizer](#) based on csstidy. If you want to create a linear or radial gradient as background or border, check our [CSS Gradient Generator](#).

Hey! You found this booklet interesting? Support Converting Colors with the new Membership Option!

The pro membership hides all ads, plus gives you double the colors in the color bucket, and more awesome pro features!

[Learn more, Memberships starting at \\$2.50/m!](#)

**Follow me
on Twitter!**

@ConvertingColor