

Converting Colors

CIELCh(70, 11.873, 21.578)

Have a look what the booklet for
CIELCh(70, 11.873, 21.578) contains.

CIELCh(70, 11.709, 20.415)	3
<i>Conversions</i>	4
<i>Details</i>	6
<i>Harmonies</i>	11
<i>Previews</i>	20
<i>Color Blindness Simulation</i>	23
<i>CSS Examples</i>	26

Color

CIELCh(70, 11.709, 20.415)

Conversions

Conversions Part 1

Format	Color
Hex	C2A4A4
RGB	194, 164, 164
RGB Percent	76%, 64%, 64%
CMY	0.2388, 0.3565, 0.3565
CMYK	0.00, 0.15, 0.15, 0.24
HSL	0°, 20%, 70%
HSV	0°, 15%, 76%
XYZ	42.2736, 40.7494, 40.8028
YIQ	172.9700, 17.8800, 6.3600

Conversions

Conversions Part 2

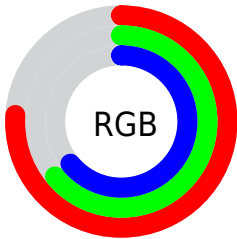
Format	Color
RYB	194, 164, 164
Decimal	12756132
CIELab	70.00, 10.97, 4.08
CIElCh	70, 11.709, 20.415
Yxy	40.7494, 0.3414, 0.3291
Android (android.graphics.Color)	4290946212 (0xFFC2A4A4)
YUV	172.9700, -4.4222, 18.4433
Hunter-Lab	63.8353, 6.4963, 6.7872

Details

The CIELCh color **70, 11.709, 20.415** is a light color, and the websafe version is hex **CC9999**. A complement of this color would be **76, 10.604, 198.647**, and the grayscale version is **71, 0.009, 296.813**.

A 20% lighter version of the original color is **90, 11.782, 20.206**, and **50, 11.789, 20.773** is the 20% darker color. If you saturate the color by 10%, you get **65, 20.041, 21.379**, and if you desaturate by 10%, it is **75, 3.975, 19.611**.

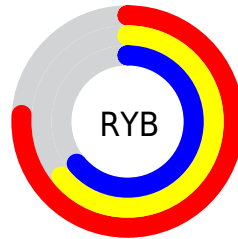
Distribution



Red (76%)

Green (64%)

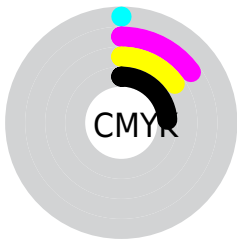
Blue (64%)



Red (76%)

Yellow (64%)

Blue (64%)

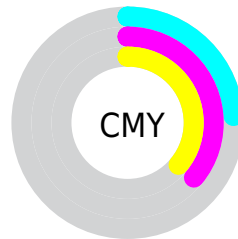


Cyan (0%)

Magenta (15%)

Yellow (15%)

Black (24%)



Cyan (24%)

Magenta (36%)

Yellow (36%)

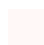
Brightness & Saturation Gradients

These gradients show how the CIELCh color 70, 11.709, 20.415 changes by changing the brightness by 10 percent. The first figure shows a shift by +10% for each color and the second figure -10%.

Similar to the brightness gradients but the following saturation gradients show a change of the CIELCh color 70, 11.709, 20.415 by changing the saturation by 10% instead.

 70, 11.709, 20.415

 70, 11.709, 20.415

 100, 11.709,
20.415

 60, 11.709, 20.415

 90, 11.709, 20.415

 50, 11.709, 20.415

 40, 11.709, 20.415

 30, 11.709, 20.415

 20, 11.709, 20.415

 10, 11.709, 20.415

 0, 11.709, 20.415

 70, 11.709, 20.415

 70, 11.709, 20.415

 65, 20.041, 21.379

 75, 3.975, 19.611

60, 28.957, 22.607

81, 3.179, 199.352

55, 38.373, 24.207

87, 9.798, 198.792

51, 48.121, 26.289

92, 15.935,
198.415

47, 57.938, 28.948

96, 19.885,
198.195

44, 67.457, 32.192

42, 76.102, 35.752

41, 82.636, 38.778

40, 85.161, 40.001

Harmonies

Complementary

The Complementary color scheme is a pair of colors which are on the opposite of each other on the color wheel.



70, 11.709, 20.415



76, 10.604, 198.647

Rectangle

The Rectangle color scheme consists of four colors that form a rectangle on the color wheel.



70, 11.709, 20.415



70, 11.709, 70.415



70, 11.709, 200.415



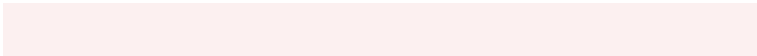
70, 11.709, 250.415

Sweetspot

The Sweet Spot groups the original color and five complimentary colors.



70, 11.707, 20.424



96, 4.501, 19.577



71, 19.783, 325.270



51, 3.105, 19.641



0, 0.000, 0.000



53, 0.007, 296.813

Same Dimension

The Same Dimension uses a secret algorithm to generate beautiful new colors.



70, 11.707, 20.424



86, 18.083, 20.765



74, 9.993, 73.504



38, 4.187, 19.930



33, 73.726, 39.725



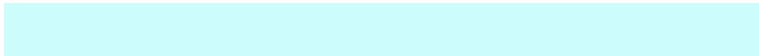
3, 13.998, 19.412

Inverse Universe

The Inverse Universe completely reimagines the original color for something new.



76, 10.604, 198.647



96, 15.948, 198.449



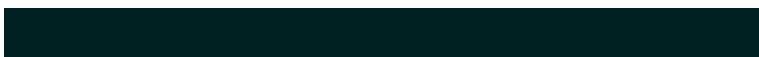
72, 9.610, 257.559



40, 3.949, 198.991



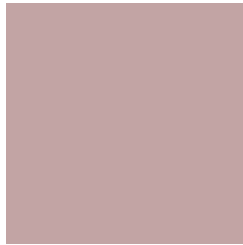
60, 35.468, 196.405



11, 12.442, 196.407

Previews

White Background



This preview shows how the CIELCh color 70, 11.709, 20.415 looks on a white background.

Color Contrast Check

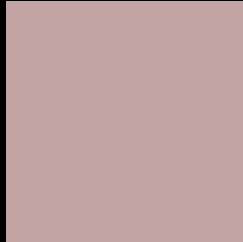
Large Text (above 18pt) WCAG AA × Fail

Any Text WCAG AA × Fail

Large Text (above 18pt) WCAG AAA × Fail

Any Text WCAG AAA × Fail

Black Background



This preview shows how the CIE LCh color 70, 11.709, 20.415 looks on a black background.

Color Contrast Check

Large Text (above 18pt) WCAG AA ✓ Pass

Any Text WCAG AA ✓ Pass

Large Text (above 18pt) WCAG AAA ✓ Pass

Any Text WCAG AAA ✓ Pass

If you want to check with other color combinations, try the [Color Contrast Checker](#).

CIELCh 70, 11.709, 20.415

Background



This preview shows how black text looks on a background with the CIELCh color 70, 11.709, 20.415.



This preview shows how white text looks on a background with the CIELCh color 70, 11.709, 20.415.

Color Blindness Simulation

Color vision deficiency is a very complex topic, and I could not describe the different causes any better than Wikipedia does, so if you want to learn more, you should check out their [article about color blindness](#).

Dichromacy



Original Color

70, 11.709, 20.415

Protanopia

70, 2.181, 49.343

Deuteranopia

70, 10.141, 23.322



Tritanopia
70, 14.440, 351.365

Trichromacy



Original Color
70, 11.709, 20.415

Protanomaly
70, 5.399, 25.568

Deuteranomaly
70, 10.539, 23.242

Tritanomaly
70, 13.050, 1.119

Monochromacy



Original Color
70, 11.709, 20.415

Achromatopsia
71, 0.009, 296.813

Achromatomaly
71, 4.192, 19.652

CSS Examples

Text

The CSS property to change the color of the text to CIELCh 70, 11.709, 20.415 is called "color". The color property can be set on classes, ids or directly on the HTML element.

This example shows how text in the color `rgb(194, 164, 164)` looks like.

```
.text, #text, p{  
    color:rgb(194, 164, 164)  
}
```

If you want to add a text shadow in that color use the text-shadow property, you can generate a text shadow directly with our [CSS Text Shadow Generator](#).

Here you see how black text with a 4 pixel rgb(194, 164, 164) colored shadow looks like.

```
.shadow{ text-shadow: 4px 4px 2px rgb(194, 164, 164) }
```

Border

The CSS property to change the border of an element to CIELCh 70, 11.709, 20.415 is called "border". The border property can be set on classes, ids or directly on the HTML element.

This example shows the color as border, it can be applied via the CSS property "border" or "border-color".

```
.border, #border, table{ border:4px solid rgb(194, 164, 164) }
```

If only the border color should be changed use the property `border-color`.

```
.border{ border-color:rgb(194, 164, 164) }
```

If you want to add a box shadow in that color use:

Here you see how a box with a 4 pixel `rgb(194, 164, 164)` colored shadow looks like.

```
.boxshadow{ -moz-box-shadow:4px 4px 4px  
4px rgb(194, 164, 164); -webkit-box-  
shadow:4px 4px 4px 4px rgb(194, 164, 164);  
box-shadow:4px 4px 4px 4px rgb(194, 164,  
164) }
```

Background

The CSS property to change the background color of an element to CIELCh 70, 11.709, 20.415 is called "background". The background property can be set on classes, ids or directly on the HTML element.

```
.background, #background, body{  
background: rgb(194, 164, 164) }
```

If only the background color should be changed can be used:

```
.background{ background-color: rgb(194,  
164, 164) }
```

This example shows the color as background, it is applied via the CSS property "background".

To optimize and compress your CSS code, you can use our [online CSS compressor and optimizer](#) based on csstidy. If you want to create a linear or radial gradient as background or border, check our [CSS Gradient Generator](#).

Hey! You found this booklet interesting? Support Converting Colors with the new Membership Option!

The pro membership hides all ads, plus gives you double the colors in the color bucket, and more awesome pro features!

[Learn more, Memberships starting at \\$2.50/m!](#)

**Follow me
on Twitter!**

@ConvertingColor