

Converting Colors

CIELCh(70, 12.578, 22.891)

Have a look what the booklet for
CIELCh(70, 12.578, 22.891) contains.

CIELCh(70, 12.551, 22.958)	3
<i>Conversions</i>	4
<i>Details</i>	6
<i>Harmonies</i>	11
<i>Previews</i>	20
<i>Color Blindness Simulation</i>	23
<i>CSS Examples</i>	26

Color

CIELCh(70, 12.551, 22.958)

Conversions

Conversions Part 1

Format	Color
Hex	C4A4A3
RGB	196, 164, 163
RGB Percent	77%, 64%, 64%
CMY	0.2328, 0.3582, 0.3621
CMYK	0.00, 0.16, 0.17, 0.23
HSL	2°, 22%, 70%
HSV	2°, 17%, 77%
XYZ	42.4677, 40.7494, 40.1179
YIQ	173.4540, 19.3930, 6.4730

Conversions

Conversions Part 2

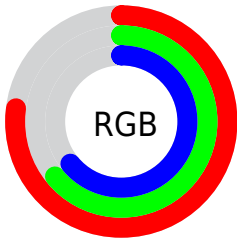
Format	Color
RYB	196, 164, 163
Decimal	12887203
CIELab	70.00, 11.56, 4.90
CIElCh	70, 12.551, 22.958
Yxy	40.7494, 0.3443, 0.3304
Android (android.graphics.Color)	4291077283 (0xFFC4A4A3)
YUV	173.4540, -5.1538, 19.7728
Hunter-Lab	63.8353, 7.0391, 7.4233

Details

The CIELCh color **70, 12.551, 22.958** is a light color, and the websafe version is hex **CC9999**. A complement of this color would be **76, 11.239, 201.356**, and the grayscale version is **71, 0.009, 296.813**.

A 20% lighter version of the original color is **90, 12.568, 22.607**, and **50, 12.713, 23.473** is the 20% darker color. If you saturate the color by 10%, you get **65, 20.798, 23.830**, and if you desaturate by 10%, it is **75, 4.906, 22.259**.

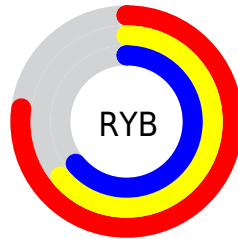
Distribution



Red (77%)

Green (64%)

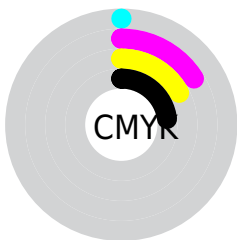
Blue (64%)



Red (77%)

Yellow (64%)

Blue (64%)

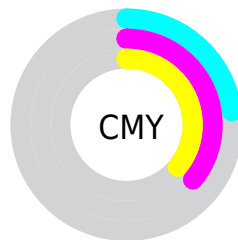


Cyan (0%)

Magenta (16%)

Yellow (17%)

Black (23%)



Cyan (23%)

Magenta (36%)

Yellow (36%)

Brightness & Saturation Gradients

These gradients show how the CIELCh color 70, 12.551, 22.958 changes by changing the brightness by 10 percent. The first figure shows a shift by +10% for each color and the second figure -10%.

Similar to the brightness gradients but the following saturation gradients show a change of the CIELCh color 70, 12.551, 22.958 by changing the saturation by 10% instead.

70, 12.551, 22.958

70, 12.551, 22.958

100, 12.551,
22.958

60, 12.551, 22.958

90, 12.551, 22.958

50, 12.551, 22.958

40, 12.551, 22.958

30, 12.551, 22.958

20, 12.551, 22.958

10, 12.551, 22.958

0, 12.551, 22.958

70, 12.551, 22.958

70, 12.551, 22.958

65, 20.798, 23.830

75, 4.906, 22.259

60, 29.641, 24.957

81, 2.158, 202.138

55, 39.009, 26.437

86, 8.687, 201.578

51, 48.753, 28.366

92, 14.735,
201.270

47, 58.628, 30.818

96, 19.420,
198.224

44, 68.262, 33.770

42, 76.998, 36.916

41, 83.494, 39.446

41, 85.255, 40.298

Harmonies

Complementary

The Complementary color scheme is a pair of colors which are on the opposite of each other on the color wheel.



70, 12.551, 22.958



76, 11.239, 201.356

Rectangle

The Rectangle color scheme consists of four colors that form a rectangle on the color wheel.



70, 12.551, 22.958



70, 12.551, 72.958



70, 12.551, 202.958



70, 12.551, 252.958

Sweetspot

The Sweet Spot groups the original color and five complimentary colors.



70, 12.549, 22.967



97, 4.403, 22.123



71, 21.484, 325.800



51, 3.013, 22.180



0, 0.000, 0.000



53, 0.007, 296.813

Same Dimension

The Same Dimension uses a secret algorithm to generate beautiful new colors.



70, 12.549, 22.967



87, 18.716, 23.241



74, 11.120, 75.087



38, 4.064, 22.434



33, 73.311, 40.139



3, 13.721, 21.101

Inverse Universe

The Inverse Universe completely reimagines the original color for something new.



76, 11.239, 201.356



96, 16.354, 201.221



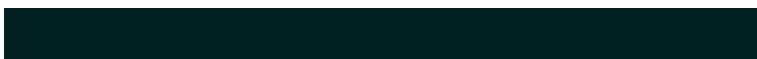
72, 10.699, 259.583



40, 3.829, 201.691



58, 34.029, 201.227



10, 12.023, 200.098

Previews

White Background



This preview shows how the CIELCh color 70, 12.551, 22.958 looks on a white background.

Color Contrast Check

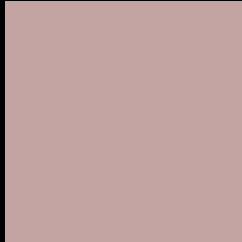
Large Text (above 18pt) WCAG AA × Fail

Any Text WCAG AA × Fail

Large Text (above 18pt) WCAG AAA × Fail

Any Text WCAG AAA × Fail

Black Background



This preview shows how the CIELCh color 70, 12.551, 22.958 looks on a black background.

Color Contrast Check

Large Text (above 18pt) WCAG AA ✓ Pass

Any Text WCAG AA ✓ Pass

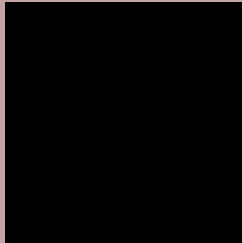
Large Text (above 18pt) WCAG AAA ✓ Pass

Any Text WCAG AAA ✓ Pass

If you want to check with other color combinations, try the [Color Contrast Checker](#).

CIELCh 70, 12.551, 22.958

Background



This preview shows how black text looks on a background with the CIELCh color 70, 12.551, 22.958.



This preview shows how white text looks on a background with the CIELCh color 70, 12.551, 22.958.

Color Blindness Simulation

Color vision deficiency is a very complex topic, and I could not describe the different causes any better than Wikipedia does, so if you want to learn more, you should check out their [article about color blindness](#).

Dichromacy



Original Color

70, 12.551, 22.958

Protanopia

70, 3.110, 80.458

Deuteranopia

70, 10.306, 29.333



Tritanopia
70, 14.892, 354.781

Trichromacy



Original Color
70, 12.551, 22.958

Protanomaly
70, 6.010, 35.571

Deuteranomaly
70, 11.098, 28.745

Tritanomaly
70, 13.654, 4.484

Monochromacy



Original Color
70, 12.551, 22.958

Achromatopsia
71, 0.009, 296.813

Achromatomaly
70, 4.232, 27.037

CSS Examples

Text

The CSS property to change the color of the text to CIELCh 70, 12.551, 22.958 is called "color". The color property can be set on classes, ids or directly on the HTML element.

This example shows how text in the color `rgb(196, 164, 163)` looks like.

```
.text, #text, p{  
    color:rgb(196, 164, 163)  
}
```

If you want to add a text shadow in that color use the text-shadow property, you can generate a text shadow directly with our [CSS Text Shadow Generator](#).

Here you see how black text with a 4 pixel rgb(196, 164, 163) colored shadow looks like.

```
.shadow{ text-shadow: 4px 4px 2px rgb(196, 164, 163) }
```

Border

The CSS property to change the border of an element to CIELCh 70, 12.551, 22.958 is called "border". The border property can be set on classes, ids or directly on the HTML element.

This example shows the color as border, it can be applied via the CSS property "border" or "border-color".

```
.border, #border, table{ border:4px solid rgb(196, 164, 163) }
```

If only the border color should be changed use the property `border-color`.

```
.border{ border-color:rgb(196, 164, 163) }
```

If you want to add a box shadow in that color use:

Here you see how a box with a 4 pixel `rgb(196, 164, 163)` colored shadow looks like.

```
.boxshadow{ -moz-box-shadow:4px 4px 4px  
4px rgb(196, 164, 163); -webkit-box-  
shadow:4px 4px 4px 4px rgb(196, 164, 163);  
box-shadow:4px 4px 4px 4px rgb(196, 164,  
163) }
```

Background

The CSS property to change the background color of an element to CIELCh 70, 12.551, 22.958 is called "background". The background property can be set on classes, ids or directly on the HTML element.

```
.background, #background, body{  
background: rgb(196, 164, 163) }
```

If only the background color should be changed can be used:

```
.background{ background-color: rgb(196,  
164, 163) }
```

This example shows the color as background, it is applied via the CSS property "background".

To optimize and compress your CSS code, you can use our [online CSS compressor and optimizer](#) based on csstidy. If you want to create a linear or radial gradient as background or border, check our [CSS Gradient Generator](#).

Hey! You found this booklet interesting? Support Converting Colors with the new Membership Option!

The pro membership hides all ads, plus gives you double the colors in the color bucket, and more awesome pro features!

[Learn more, Memberships starting at \\$2.50/m!](#)

**Follow me
on Twitter!**

@ConvertingColor