

Converting Colors

CIELCh(70, 12.748, 20.522)

Have a look what the booklet for
CIELCh(70, 12.748, 20.522) contains.

CIELCh(70, 12.925, 20.534)	3
<i>Conversions</i>	4
<i>Details</i>	6
<i>Harmonies</i>	11
<i>Previews</i>	20
<i>Color Blindness Simulation</i>	23
<i>CSS Examples</i>	26

Color

CIELCh(70, 12.925, 20.534)

Conversions

Conversions Part 1

Format	Color
Hex	C4A3A3
RGB	196, 163, 163
RGB Percent	77%, 64%, 64%
CMY	0.2300, 0.3595, 0.3595
CMYK	0.00, 0.17, 0.17, 0.23
HSL	0°, 22%, 71%
HSV	0°, 17%, 77%
XYZ	42.6503, 40.7494, 40.4225
YIQ	172.8670, 19.6680, 6.9960

Conversions

Conversions Part 2

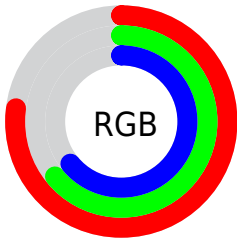
Format	Color
RYB	196, 163, 163
Decimal	12886947
CIELab	70.00, 12.10, 4.53
CIELCh	70, 12.925, 20.534
Yxy	40.7494, 0.3444, 0.3291
Android (android.graphics.Color)	4291077027 (0xFFC4A3A3)
YUV	172.8670, -4.8644, 20.2876
Hunter-Lab	63.8353, 7.5496, 7.1404

Details

The CIELCh color $70, 12.925, 20.534$ is a light color, and the websafe version is hex `CC9999`. A complement of this color would be $77, 11.596, 198.575$, and the grayscale version is $71, 0.009, 296.813$.

A 20% lighter version of the original color is $90, 12.924, 20.297$, and $50, 13.110, 20.945$ is the 20% darker color. If you saturate the color by 10%, you get $65, 21.418, 21.530$, and if you desaturate by 10%, it is $75, 5.036, 19.727$.

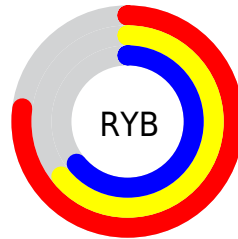
Distribution



Red (77%)

Green (64%)

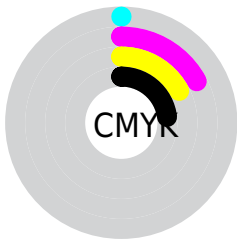
Blue (64%)



Red (77%)

Yellow (64%)

Blue (64%)

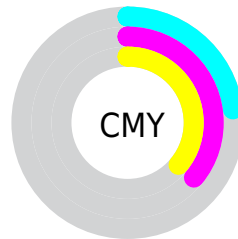


Cyan (0%)

Magenta (17%)

Yellow (17%)

Black (23%)



Cyan (23%)

Magenta (36%)

Yellow (36%)

Brightness & Saturation Gradients

These gradients show how the CIELCh color 70, 12.925, 20.534 changes by changing the brightness by 10 percent. The first figure shows a shift by +10% for each color and the second figure -10%.

Similar to the brightness gradients but the following saturation gradients show a change of the CIELCh color 70, 12.925, 20.534 by changing the saturation by 10% instead.

70, 12.925, 20.534

70, 12.925, 20.534

100, 12.925,
20.534

60, 12.925, 20.534

90, 12.925, 20.534

50, 12.925, 20.534

40, 12.925, 20.534

30, 12.925, 20.534

20, 12.925, 20.534

10, 12.925, 20.534

0, 12.925, 20.534

70, 12.925, 20.534

70, 12.925, 20.534

65, 21.418, 21.530

75, 5.036, 19.727

60, 30.495, 22.804

81, 2.262, 199.492

55, 40.058, 24.466

87, 9.013, 198.851

51, 49.925, 26.625

92, 15.270,
198.460

47, 59.817, 29.371

96, 19.210,
198.237

44, 69.346, 32.688

42, 77.868, 36.245

41, 84.092, 39.133

41, 85.896, 40.001

Harmonies

Complementary

The Complementary color scheme is a pair of colors which are on the opposite of each other on the color wheel.



70, 12.925, 20.534



77, 11.596, 198.575

Rectangle

The Rectangle color scheme consists of four colors that form a rectangle on the color wheel.



70, 12.925, 20.534



70, 12.925, 70.534



70, 12.925, 200.534



70, 12.925, 250.534

Sweetspot

The Sweet Spot groups the original color and five complimentary colors.



70, 12.923, 20.542



97, 4.538, 19.577



71, 21.731, 325.346



51, 3.105, 19.641



0, 0.000, 0.000



53, 0.007, 296.813

Same Dimension

The Same Dimension uses a secret algorithm to generate beautiful new colors.



70, 12.923, 20.542



86, 19.267, 20.861



74, 11.008, 73.338



38, 4.187, 19.930



33, 73.726, 39.725



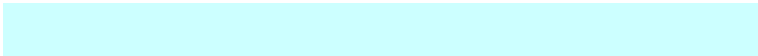
3, 13.998, 19.412

Inverse Universe

The Inverse Universe completely reimagines the original color for something new.



77, 11.596, 198.575



97, 16.870, 198.397



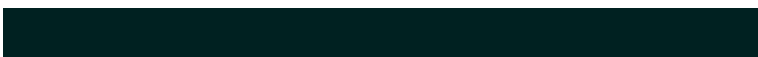
72, 10.544, 257.771



40, 3.949, 198.992



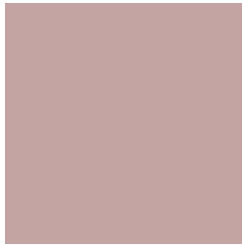
60, 35.468, 196.406



11, 12.442, 196.407

Previews

White Background



This preview shows how the CIELCh color 70, 12.925, 20.534 looks on a white background.

Color Contrast Check

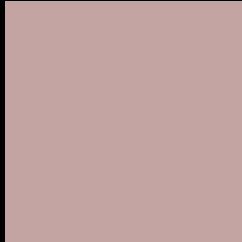
Large Text (above 18pt) WCAG AA × Fail

Any Text WCAG AA × Fail

Large Text (above 18pt) WCAG AAA × Fail

Any Text WCAG AAA × Fail

Black Background



This preview shows how the CIELCh color 70, 12.925, 20.534 looks on a black background.

Color Contrast Check

Large Text (above 18pt) WCAG AA ✓ Pass

Any Text WCAG AA ✓ Pass

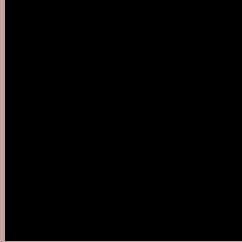
Large Text (above 18pt) WCAG AAA ✓ Pass

Any Text WCAG AAA ✓ Pass

If you want to check with other color combinations, try the [Color Contrast Checker](#).

CIELCh 70, 12.925, 20.534

Background



This preview shows how black text looks on a background with the CIELCh color 70, 12.925, 20.534.



This preview shows how white text looks on a background with the CIELCh color 70, 12.925, 20.534.

Color Blindness Simulation

Color vision deficiency is a very complex topic, and I could not describe the different causes any better than Wikipedia does, so if you want to learn more, you should check out their [article about color blindness](#).

Dichromacy



Original Color

70, 12.925, 20.534

Protanopia

70, 2.498, 60.259

Deuteranopia

70, 10.209, 26.352



Tritanopia
70, 15.241, 355.469

Trichromacy



Original Color
70, 12.925, 20.534

Protanomaly
70, 5.874, 30.493

Deuteranomaly
70, 11.350, 23.111

Tritanomaly
70, 14.178, 2.851

Monochromacy



Original Color
70, 12.925, 20.534

Achromatopsia
71, 0.009, 296.813

Achromatomaly
70, 4.582, 19.698

CSS Examples

Text

The CSS property to change the color of the text to CIELCh 70, 12.925, 20.534 is called "color". The color property can be set on classes, ids or directly on the HTML element.

This example shows how text in the color `rgb(196, 163, 163)` looks like.

```
.text, #text, p{  
    color:rgb(196, 163, 163)  
}
```

If you want to add a text shadow in that color use the text-shadow property, you can generate a text shadow directly with our [CSS Text Shadow Generator](#).

Here you see how black text with a 4 pixel rgb(196, 163, 163) colored shadow looks like.

```
.shadow{ text-shadow: 4px 4px 2px rgb(196, 163, 163) }
```

Border

The CSS property to change the border of an element to CIELCh 70, 12.925, 20.534 is called "border". The border property can be set on classes, ids or directly on the HTML element.

This example shows the color as border, it can be applied via the CSS property "border" or "border-color".

```
.border, #border, table{ border:4px solid rgb(196, 163, 163) }
```

If only the border color should be changed use the property `border-color`.

```
.border{ border-color:rgb(196, 163, 163) }
```

If you want to add a box shadow in that color use:

Here you see how a box with a 4 pixel `rgb(196, 163, 163)` colored shadow looks like.

```
.boxshadow{ -moz-box-shadow:4px 4px 4px  
4px rgb(196, 163, 163); -webkit-box-  
shadow:4px 4px 4px 4px rgb(196, 163, 163);  
box-shadow:4px 4px 4px 4px rgb(196, 163,  
163) }
```

Background

The CSS property to change the background color of an element to CIELCh 70, 12.925, 20.534 is called "background". The background property can be set on classes, ids or directly on the HTML element.

```
.background, #background, body{  
background: rgb(196, 163, 163) }
```

If only the background color should be changed can be used:

```
.background{ background-color: rgb(196,  
163, 163) }
```

This example shows the color as background, it is applied via the CSS property "background".

To optimize and compress your CSS code, you can use our [online CSS compressor and optimizer](#) based on csstidy. If you want to create a linear or radial gradient as background or border, check our [CSS Gradient Generator](#).

Hey! You found this booklet interesting? Support Converting Colors with the new Membership Option!

The pro membership hides all ads, plus gives you double the colors in the color bucket, and more awesome pro features!

[Learn more, Memberships starting at \\$2.50/m!](#)

**Follow me
on Twitter!**

@ConvertingColor