

Converting Colors

CIELCh(70, 13.036, 25.292)

Have a look what the booklet for
CIELCh(70, 13.036, 25.292) contains.

CIELCh(70, 13.036, 25.292)	3
<i>Conversions</i>	4
<i>Details</i>	6
<i>Harmonies</i>	11
<i>Previews</i>	20
<i>Color Blindness Simulation</i>	23
<i>CSS Examples</i>	26

Color

CIELCh(70, 13.036, 25.292)

Conversions

Conversions Part 1

Format	Color
Hex	C4A3A1
RGB	196, 163, 161
RGB Percent	77%, 64%, 63%
CMY	0.2295, 0.3589, 0.3668
CMYK	0.00, 0.17, 0.18, 0.23
HSL	3°, 23%, 70%
HSV	3°, 18%, 77%
XYZ	42.5443, 40.7494, 39.5550
YIQ	172.6390, 20.3100, 6.3740

Conversions

Conversions Part 2

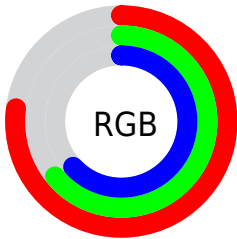
Format	Color
RYB	196, 163, 161
Decimal	12886945
CIELab	70.00, 11.79, 5.57
CIElCh	70, 13.036, 25.292
Yxy	40.7494, 0.3463, 0.3317
Android (android.graphics.Color)	4291077025 (0xFFC4A3A1)
YUV	172.6390, -5.7380, 20.4876
Hunter-Lab	63.8353, 7.2531, 7.9462

Details

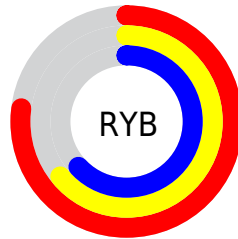
The CIELCh color **70, 13.036, 25.292** is a light color, and the websafe version is hex **CC9999**. A complement of this color would be **76, 11.580, 203.945**, and the grayscale version is **71, 0.009, 296.813**.

A 20% lighter version of the original color is **90, 13.012, 24.829**, and **50, 13.171, 23.450** is the 20% darker color. If you saturate the color by 10%, you get **65, 21.182, 26.066**, and if you desaturate by 10%, it is **75, 5.494, 24.692**.

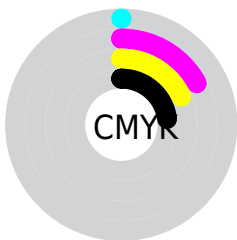
Distribution



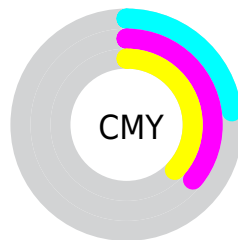
- Red (77%)
- Green (64%)
- Blue (63%)



- Red (77%)
- Yellow (64%)
- Blue (63%)



- Cyan (0%)
- Magenta (17%)
- Yellow (18%)
- Black (23%)



- Cyan (23%)
- Magenta (36%)
- Yellow (37%)

Brightness & Saturation Gradients

These gradients show how the CIELCh color 70, 13.036, 25.292 changes by changing the brightness by 10 percent. The first figure shows a shift by +10% for each color and the second figure -10%.

Similar to the brightness gradients but the following saturation gradients show a change of the CIELCh color 70, 13.036, 25.292 by changing the saturation by 10% instead.

70, 13.036, 25.292

70, 13.036, 25.292

100, 13.036,
25.292

60, 13.036, 25.292

90, 13.036, 25.292

50, 13.036, 25.292

40, 13.036, 25.292

30, 13.036, 25.292

20, 13.036, 25.292

10, 13.036, 25.292

0, 13.036, 25.292

70, 13.036, 25.292

70, 13.036, 25.292

65, 21.182, 26.066

75, 5.494, 24.692

60, 29.933, 27.082

80, 1.467, 204.763

56, 39.231, 28.430

86, 7.898, 204.167

51, 48.944, 30.194

91, 13.852,
203.930

48, 58.844, 32.431

96, 19.168,
198.240

45, 68.553, 35.096

43, 77.355, 37.859

41, 83.900, 40.002

41, 85.168, 40.560

Harmonies

Complementary

The Complementary color scheme is a pair of colors which are on the opposite of each other on the color wheel.



70, 13.036, 25.292



76, 11.580, 203.945

Rectangle

The Rectangle color scheme consists of four colors that form a rectangle on the color wheel.



70, 13.036, 25.292



70, 13.036, 75.292



70, 13.036, 205.292



70, 13.036, 255.292

Sweetspot

The Sweet Spot groups the original color and five complimentary colors.



70, 13.035, 25.301



97, 4.291, 24.513



70, 22.288, 326.792



51, 2.936, 24.563



0, 0.000, 0.000



53, 0.007, 296.813

Same Dimension

The Same Dimension uses a secret algorithm to generate beautiful new colors.



70, 13.035, 25.301



86, 19.247, 25.545



74, 12.094, 78.354



39, 4.048, 24.784



34, 73.865, 40.537



4, 15.329, 22.487

Inverse Universe

The Inverse Universe completely reimagines the original color for something new.



76, 11.580, 203.945



96, 16.670, 203.853



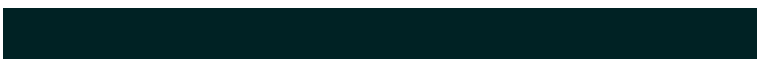
72, 11.715, 263.193



41, 3.812, 204.227



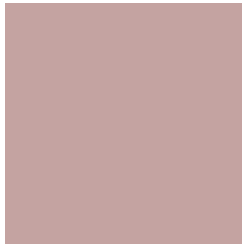
58, 33.317, 205.897



11, 12.233, 203.663

Previews

White Background



This preview shows how the CIELCh color 70, 13.036, 25.292 looks on a white background.

Color Contrast Check

Large Text (above 18pt) WCAG AA × Fail

Any Text WCAG AA × Fail

Large Text (above 18pt) WCAG AAA × Fail

Any Text WCAG AAA × Fail

Black Background



This preview shows how the CIELCh color 70, 13.036, 25.292 looks on a black background.

Color Contrast Check

Large Text (above 18pt) WCAG AA ✓ Pass

Any Text WCAG AA ✓ Pass

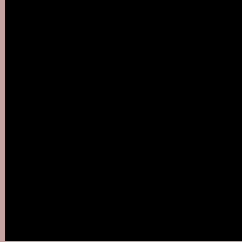
Large Text (above 18pt) WCAG AAA ✓ Pass

Any Text WCAG AAA ✓ Pass

If you want to check with other color combinations, try the [Color Contrast Checker](#).

CIELCh 70, 13.036, 25.292

Background



This preview shows how black text looks on a background with the CIELCh color 70, 13.036, 25.292.



This preview shows how white text looks on a background with the CIELCh color 70, 13.036, 25.292.

Color Blindness Simulation

Color vision deficiency is a very complex topic, and I could not describe the different causes any better than Wikipedia does, so if you want to learn more, you should check out their [article about color blindness](#).

Dichromacy



Original Color

70, 13.036, 25.292

Protanopia

70, 3.775, 79.327

Deuteranopia

70, 10.825, 31.837



Tritanopia
70, 15.241, 355.469

Trichromacy



Original Color
70, 13.036, 25.292

Protanomaly
70, 6.193, 40.384

Deuteranomaly
70, 11.909, 28.248

Tritanomaly
70, 13.540, 6.714

Monochromacy



Original Color
70, 13.036, 25.292

Achromatopsia
71, 0.009, 296.813

Achromatomaly
71, 4.615, 26.459

CSS Examples

Text

The CSS property to change the color of the text to CIELCh 70, 13.036, 25.292 is called "color". The color property can be set on classes, ids or directly on the HTML element.

This example shows how text in the color `rgb(196, 163, 161)` looks like.

```
.text, #text, p{  
    color:rgb(196, 163, 161)  
}
```

If you want to add a text shadow in that color use the text-shadow property, you can generate a text shadow directly with our [CSS Text Shadow Generator](#).

Here you see how black text with a 4 pixel rgb(196, 163, 161) colored shadow looks like.

```
.shadow{ text-shadow: 4px 4px 2px rgb(196, 163, 161) }
```

Border

The CSS property to change the border of an element to CIELCh 70, 13.036, 25.292 is called "border". The border property can be set on classes, ids or directly on the HTML element.

This example shows the color as border, it can be applied via the CSS property "border" or "border-color".

```
.border, #border, table{ border:4px solid rgb(196, 163, 161) }
```

If only the border color should be changed use the property `border-color`.

```
.border{ border-color:rgb(196, 163, 161) }
```

If you want to add a box shadow in that color use:

Here you see how a box with a 4 pixel `rgb(196, 163, 161)` colored shadow looks like.

```
.boxshadow{ -moz-box-shadow:4px 4px 4px  
4px rgb(196, 163, 161); -webkit-box-  
shadow:4px 4px 4px 4px rgb(196, 163, 161);  
box-shadow:4px 4px 4px 4px rgb(196, 163,  
161) }
```

Background

The CSS property to change the background color of an element to CIELCh 70, 13.036, 25.292 is called "background". The background property can be set on classes, ids or directly on the HTML element.

```
.background, #background, body{  
background: rgb(196, 163, 161) }
```

If only the background color should be changed can be used:

```
.background{ background-color: rgb(196,  
163, 161) }
```

This example shows the color as background, it is applied via the CSS property "background".

To optimize and compress your CSS code, you can use our [online CSS compressor and optimizer](#) based on csstidy. If you want to create a linear or radial gradient as background or border, check our [CSS Gradient Generator](#).

Hey! You found this booklet interesting? Support Converting Colors with the new Membership Option!

The pro membership hides all ads, plus gives you double the colors in the color bucket, and more awesome pro features!

[Learn more, Memberships starting at \\$2.50/m!](#)

**Follow me
on Twitter!**

@ConvertingColor