

Converting Colors

CIELCh(70, 13.712, 41.248)

Have a look what the booklet for
CIELCh(70, 13.712, 41.248) contains.

CIELCh(70, 13.712, 41.248)	3
<i>Conversions</i>	4
<i>Details</i>	6
<i>Harmonies</i>	11
<i>Previews</i>	20
<i>Color Blindness Simulation</i>	23
<i>CSS Examples</i>	26

Color

CIELCh(70, 13.712, 41.248)

Conversions

Conversions Part 1

Format	Color
Hex	C4A49B
RGB	196, 164, 155
RGB Percent	77%, 64%, 61%
CMY	0.2306, 0.3561, 0.3914
CMYK	0.00, 0.16, 0.21, 0.23
HSL	13°, 26%, 69%
HSV	13°, 21%, 77%
XYZ	42.0533, 40.7494, 36.7382
YIQ	172.5420, 21.9610, 3.9850

Conversions

Conversions Part 2

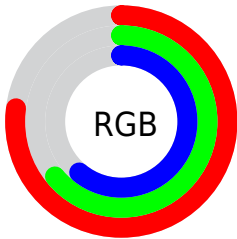
Format	Color
R _Y B	196, 167, 155
Decimal	12887195
CIE Lab	70.00, 10.31, 9.04
CIE LCh	70, 13.712, 41.248
Yxy	40.7494, 0.3518, 0.3409
Android (android.graphics.Color)	4291077275 (0xFFC4A49B)
YUV	172.5420, -8.6482, 20.5727
Hunter-Lab	63.8353, 5.8804, 10.5624

Details

The CIELCh color $70, 13.712, 41.248$ is a light color, and the websafe version is hex `CC9999`. A complement of this color would be $74, 11.976, 222.800$, and the grayscale version is $71, 0.009, 296.813$.

A 20% lighter version of the original color is $90, 13.786, 42.141$, and $50, 13.846, 40.269$ is the 20% darker color. If you saturate the color by 10%, you get $66, 21.126, 41.212$, and if you desaturate by 10%, it is $74, 6.866, 41.400$.

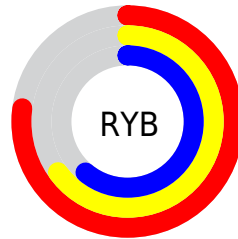
Distribution



Red (77%)

Green (64%)

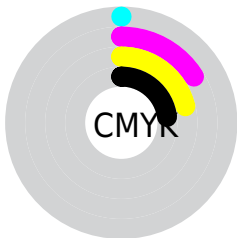
Blue (61%)



Red (77%)

Yellow (65%)

Blue (61%)

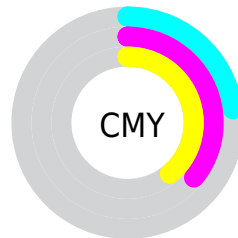


Cyan (0%)

Magenta (16%)

Yellow (21%)

Black (23%)



Cyan (23%)

Magenta (36%)

Yellow (39%)

Brightness & Saturation Gradients

These gradients show how the CIELCh color 70, 13.712, 41.248 changes by changing the brightness by 10 percent. The first figure shows a shift by +10% for each color and the second figure -10%.

Similar to the brightness gradients but the following saturation gradients show a change of the CIELCh color 70, 13.712, 41.248 by changing the saturation by 10% instead.

■ 70, 13.712, 41.248

■ 70, 13.712, 41.248

■ 100, 13.712,
41.248

■ 60, 13.712, 41.248

■ 90, 13.712, 41.248

■ 50, 13.712, 41.248

■ 40, 13.712, 41.248

■ 30, 13.712, 41.248

■ 20, 13.712, 41.248

■ 10, 13.712, 41.248

■ 0, 13.712, 41.248

■ 70, 13.712, 41.248

■ 70, 13.712, 41.248

■ 66, 21.126, 41.212

■ 74, 6.866, 41.400

62, 29.139, 41.313

79, 0.544, 40.776

58, 37.749, 41.599

83, 5.305, 222.189

54, 46.897, 42.091

88, 10.734,
222.526

51, 56.420, 42.773

92, 15.792,
222.930

48, 65.931, 43.527

45, 74.563, 43.993

96, 19.257,
198.234

43, 80.889, 44.029

Harmonies

Complementary

The Complementary color scheme is a pair of colors which are on the opposite of each other on the color wheel.



70, 13.712, 41.248



74, 11.976, 222.800

Rectangle

The Rectangle color scheme consists of four colors that form a rectangle on the color wheel.



70, 13.712, 41.248



70, 13.712, 91.248



70, 13.712, 221.248



70, 13.712, 271.248

Sweetspot

The Sweet Spot groups the original color and five complimentary colors.



70, 13.711, 41.258



97, 4.584, 41.458



69, 23.274, 332.445



51, 3.049, 41.454



0, 0.000, 0.000



53, 0.007, 296.813

Same Dimension

The Same Dimension uses a secret algorithm to generate beautiful new colors.



70, 13.711, 41.258



86, 20.667, 41.222



75, 16.434, 92.351



39, 3.512, 41.423



36, 69.371, 44.403



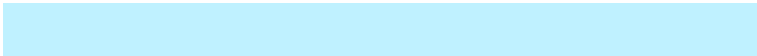
4, 12.297, 33.213

Inverse Universe

The Inverse Universe completely reimagines the original color for something new.



74, 11.976, 222.800



92, 17.471, 223.109



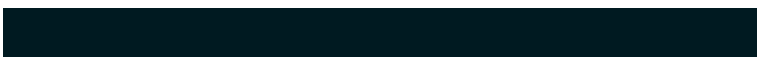
68, 16.551, 277.817



40, 3.319, 222.221



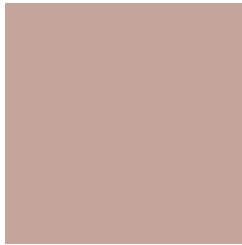
49, 31.429, 239.321



8, 10.345, 231.046

Previews

White Background



This preview shows how the CIELCh color 70, 13.712, 41.248 looks on a white background.

Color Contrast Check

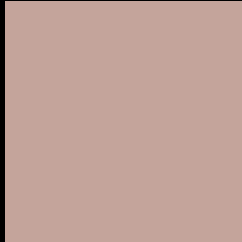
Large Text (above 18pt) WCAG AA × Fail

Any Text WCAG AA × Fail

Large Text (above 18pt) WCAG AAA × Fail

Any Text WCAG AAA × Fail

Black Background



This preview shows how the CIE LCh color 70, 13.712, 41.248 looks on a black background.

Color Contrast Check

Large Text (above 18pt) WCAG AA ✓ Pass

Any Text WCAG AA ✓ Pass

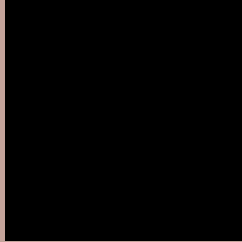
Large Text (above 18pt) WCAG AAA ✓ Pass

Any Text WCAG AAA ✓ Pass

If you want to check with other color combinations, try the [Color Contrast Checker](#).

CIELCh 70, 13.712, 41.248

Background



This preview shows how black text looks on a background with the CIELCh color 70, 13.712, 41.248.



This preview shows how white text looks on a background with the CIELCh color 70, 13.712, 41.248.

Color Blindness Simulation

Color vision deficiency is a very complex topic, and I could not describe the different causes any better than Wikipedia does, so if you want to learn more, you should check out their [article about color blindness](#).

Dichromacy



Original Color


70, 13.712, 41.248

Protanopia

70, 6.932, 89.848

Deuteranopia

70, 12.808, 45.326



Tritanopia
70, 15.820, 354.319

Trichromacy



Original Color
70, 13.712, 41.248

Protanomaly
70, 8.401, 65.107

Deuteranomaly
70, 13.180, 44.598

Tritanomaly
70, 13.852, 9.362

Monochromacy



Original Color
70, 13.712, 41.248

Achromatopsia
71, 0.009, 296.813

Achromatomaly
70, 4.515, 40.837

CSS Examples

Text

The CSS property to change the color of the text to CIELCh 70, 13.712, 41.248 is called "color". The color property can be set on classes, ids or directly on the HTML element.

This example shows how text in the color `rgb(196, 164, 155)` looks like.

```
.text, #text, p{  
    color:rgb(196, 164, 155)  
}
```

If you want to add a text shadow in that color use the text-shadow property, you can generate a text shadow directly with our [CSS Text Shadow Generator](#).

Here you see how black text with a 4 pixel rgb(196, 164, 155) colored shadow looks like.

```
.shadow{ text-shadow: 4px 4px 2px rgb(196, 164, 155) }
```

Border

The CSS property to change the border of an element to CIELCh 70, 13.712, 41.248 is called "border". The border property can be set on classes, ids or directly on the HTML element.

This example shows the color as border, it can be applied via the CSS property "border" or "border-color".

```
.border, #border, table{ border:4px solid rgb(196, 164, 155) }
```

If only the border color should be changed use the property `border-color`.

```
.border{ border-color:rgb(196, 164, 155) }
```

If you want to add a box shadow in that color use:

Here you see how a box with a 4 pixel `rgb(196, 164, 155)` colored shadow looks like.

```
.boxshadow{ -moz-box-shadow:4px 4px 4px  
4px rgb(196, 164, 155); -webkit-box-  
shadow:4px 4px 4px 4px rgb(196, 164, 155);  
box-shadow:4px 4px 4px 4px rgb(196, 164,  
155) }
```

Background

The CSS property to change the background color of an element to CIELCh 70, 13.712, 41.248 is called "background". The background property can be set on classes, ids or directly on the HTML element.

```
.background, #background, body{  
background: rgb(196, 164, 155) }
```

If only the background color should be changed can be used:

```
.background{ background-color: rgb(196,  
164, 155) }
```

This example shows the color as background, it is applied via the CSS property "background".

To optimize and compress your CSS code, you can use our [online CSS compressor and optimizer](#) based on csstidy. If you want to create a linear or radial gradient as background or border, check our [CSS Gradient Generator](#).

Hey! You found this booklet interesting? Support Converting Colors with the new Membership Option!

The pro membership hides all ads, plus gives you double the colors in the color bucket, and more awesome pro features!

[Learn more, Memberships starting at \\$2.50/m!](#)

**Follow me
on Twitter!**

@ConvertingColor