

Converting Colors

CIELCh(70, 13.784, 27.345)

Have a look what the booklet for
CIELCh(70, 13.784, 27.345) contains.

CIELCh(70, 13.929, 27.287)	3
<i>Conversions</i>	4
<i>Details</i>	6
<i>Harmonies</i>	11
<i>Previews</i>	20
<i>Color Blindness Simulation</i>	23
<i>CSS Examples</i>	26

Color

CIELCh(70, 13.929, 27.287)

Conversions

Conversions Part 1

Format	Color
Hex	C6A3A0
RGB	198, 163, 160
RGB Percent	78%, 64%, 63%
CMY	0.2234, 0.3607, 0.3725
CMYK	0.00, 0.18, 0.19, 0.22
HSL	5°, 25%, 70%
HSV	5°, 19%, 78%
XYZ	42.7423, 40.7494, 38.8800
YIQ	173.1230, 21.8230, 6.4870

Conversions

Conversions Part 2

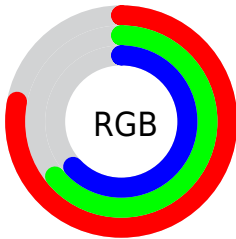
Format	Color
RYB	198, 163, 160
Decimal	13018016
CIELab	70.00, 12.38, 6.39
CIELCh	70, 13.929, 27.287
Yxy	40.7494, 0.3493, 0.3330
Android (android.graphics.Color)	4291208096 (0xFFC6A3A0)
YUV	173.1230, -6.4696, 21.8171
Hunter-Lab	63.8353, 7.8070, 8.5730

Details

The CIELCh color **70, 13.929, 27.287** is a light color, and the websafe version is hex **CC9999**. A complement of this color would be **76, 12.242, 206.155**, and the grayscale version is **71, 0.009, 296.813**.

A 20% lighter version of the original color is **90, 13.843, 26.745**, and **50, 14.130, 25.716** is the 20% darker color. If you saturate the color by 10%, you get **65, 22.065, 27.986**, and if you desaturate by 10%, it is **75, 6.402, 26.766**.

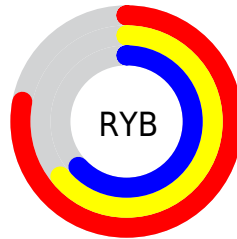
Distribution



Red (78%)

Green (64%)

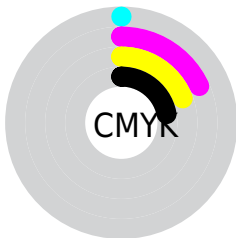
Blue (63%)



Red (78%)

Yellow (64%)

Blue (63%)

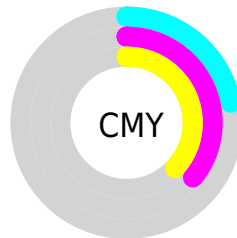


Cyan (0%)

Magenta (18%)

Yellow (19%)

Black (22%)



Cyan (22%)

Magenta (36%)

Yellow (37%)

Brightness & Saturation Gradients

These gradients show how the CIELCh color 70, 13.929, 27.287 changes by changing the brightness by 10 percent. The first figure shows a shift by +10% for each color and the second figure -10%.

Similar to the brightness gradients but the following saturation gradients show a change of the CIELCh color 70, 13.929, 27.287 by changing the saturation by 10% instead.

70, 13.929, 27.287

70, 13.929, 27.287

100, 13.929,
27.287

60, 13.929, 27.287

90, 13.929, 27.287

50, 13.929, 27.287

40, 13.929, 27.287

30, 13.929, 27.287

20, 13.929, 27.287

10, 13.929, 27.287

0, 13.929, 27.287

70, 13.929, 27.287

70, 13.929, 27.287

65, 22.065, 27.986

75, 6.402, 26.766

60, 30.814, 28.921

80, 0.542, 207.534

56, 40.122, 30.176

86, 6.953, 206.367

52, 49.866, 31.824

91, 12.885,
206.186

48, 59.818, 33.904

96, 18.435,
199.553

45, 69.578, 36.343

43, 78.340, 38.767

96, 18.703,
198.269

42, 84.833, 40.613

42, 85.327, 40.810

Harmonies

Complementary

The Complementary color scheme is a pair of colors which are on the opposite of each other on the color wheel.



70, 13.929, 27.287



76, 12.242, 206.155

Rectangle

The Rectangle color scheme consists of four colors that form a rectangle on the color wheel.



70, 13.929, 27.287



70, 13.929, 77.287



70, 13.929, 207.287



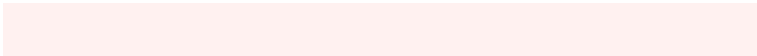
70, 13.929, 257.287

Sweetspot

The Sweet Spot groups the original color and five complimentary colors.



70, 13.928, 27.296



96, 5.068, 26.603



70, 23.883, 327.358



51, 3.371, 26.640



0, 0.000, 0.000



53, 0.007, 296.813

Same Dimension

The Same Dimension uses a secret algorithm to generate beautiful new colors.



70, 13.928, 27.296



86, 20.848, 27.558



75, 13.300, 79.809



39, 3.968, 26.776



34, 73.556, 40.844



4, 15.130, 23.717

Inverse Universe

The Inverse Universe completely reimagines the original color for something new.



76, 12.242, 206.155



95, 17.769, 206.096



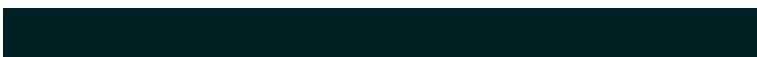
71, 12.910, 265.066



41, 3.736, 206.381



57, 32.567, 209.930



11, 11.995, 206.687

Previews

White Background



This preview shows how the CIELCh color 70, 13.929, 27.287 looks on a white background.

Color Contrast Check

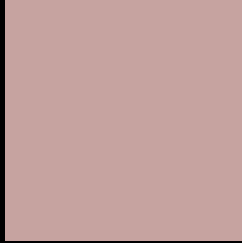
Large Text (above 18pt) WCAG AA × Fail

Any Text WCAG AA × Fail

Large Text (above 18pt) WCAG AAA × Fail

Any Text WCAG AAA × Fail

Black Background



This preview shows how the CIE LCh color 70, 13.929, 27.287 looks on a black background.

Color Contrast Check

Large Text (above 18pt) WCAG AA ✓ Pass

Any Text WCAG AA ✓ Pass

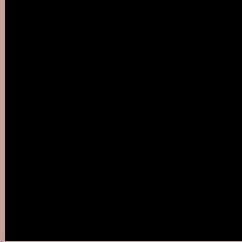
Large Text (above 18pt) WCAG AAA ✓ Pass

Any Text WCAG AAA ✓ Pass

If you want to check with other color combinations, try the [Color Contrast Checker](#).

CIELCh 70, 13.929, 27.287

Background



This preview shows how black text looks on a background with the CIELCh color 70, 13.929, 27.287.



This preview shows how white text looks on a background with the CIELCh color 70, 13.929, 27.287.

Color Blindness Simulation

Color vision deficiency is a very complex topic, and I could not describe the different causes any better than Wikipedia does, so if you want to learn more, you should check out their [article about color blindness](#).

Dichromacy



Original Color

70, 13.929, 27.287

Protanopia

70, 4.257, 82.961

Deuteranopia

70, 10.974, 34.576



Tritanopia
70, 16.319, 357.379

Trichromacy



Original Color
70, 13.929, 27.287

Protanomaly
70, 6.776, 43.499

Deuteranomaly
70, 12.026, 30.781

Tritanomaly
70, 14.710, 7.967

Monochromacy



Original Color
70, 13.929, 27.287

Achromatopsia
71, 0.009, 296.813

Achromatomaly
70, 5.006, 25.977

CSS Examples

Text

The CSS property to change the color of the text to CIELCh 70, 13.929, 27.287 is called "color". The color property can be set on classes, ids or directly on the HTML element.

This example shows how text in the color `rgb(198, 163, 160)` looks like.

```
.text, #text, p{  
    color:rgb(198, 163, 160)  
}
```

If you want to add a text shadow in that color use the text-shadow property, you can generate a text shadow directly with our [CSS Text Shadow Generator](#).

Here you see how black text with a 4 pixel rgb(198, 163, 160) colored shadow looks like.

```
.shadow{ text-shadow: 4px 4px 2px rgb(198, 163, 160) }
```

Border

The CSS property to change the border of an element to CIELCh 70, 13.929, 27.287 is called "border". The border property can be set on classes, ids or directly on the HTML element.

This example shows the color as border, it can be applied via the CSS property "border" or "border-color".

```
.border, #border, table{ border:4px solid rgb(198, 163, 160) }
```

If only the border color should be changed use the property border-color.

```
.border{ border-color:rgb(198, 163, 160) }
```

If you want to add a box shadow in that color use:

Here you see how a box with a 4 pixel rgb(198, 163, 160) colored shadow looks like.

```
.boxshadow{ -moz-box-shadow:4px 4px 4px  
4px rgb(198, 163, 160); -webkit-box-  
shadow:4px 4px 4px 4px rgb(198, 163, 160);  
box-shadow:4px 4px 4px 4px rgb(198, 163,  
160) }
```

Background

The CSS property to change the background color of an element to CIELCh 70, 13.929, 27.287 is called "background". The background property can be set on classes, ids or directly on the HTML element.

```
.background, #background, body{  
background: rgb(198, 163, 160) }
```

If only the background color should be changed can be used:

```
.background{ background-color: rgb(198,  
163, 160) }
```

This example shows the color as background, it is applied via the CSS property "background".

To optimize and compress your CSS code, you can use our [online CSS compressor and optimizer](#) based on csstidy. If you want to create a linear or radial gradient as background or border, check our [CSS Gradient Generator](#).

Hey! You found this booklet interesting? Support Converting Colors with the new Membership Option!

The pro membership hides all ads, plus gives you double the colors in the color bucket, and more awesome pro features!

[Learn more, Memberships starting at \\$2.50/m!](#)

**Follow me
on Twitter!**

@ConvertingColor