

Converting Colors

CIELCh(70, 13.865, 52.772)

Have a look what the booklet for
CIELCh(70, 13.865, 52.772) contains.

CIELCh(70, 13.668, 51.285)	3
<i>Conversions</i>	4
<i>Details</i>	6
<i>Harmonies</i>	11
<i>Previews</i>	20
<i>Color Blindness Simulation</i>	23
<i>CSS Examples</i>	26

Color

CIELCh(70, 13.668, 51.285)

Conversions

Conversions Part 1

Format	Color
Hex	C2A598
RGB	194, 165, 152
RGB Percent	76%, 65%, 60%
CMY	0.2384, 0.3522, 0.4032
CMYK	0.00, 0.15, 0.22, 0.24
HSL	19°, 26%, 68%
HSV	19°, 22%, 76%
XYZ	41.4729, 40.7494, 35.4676
YIQ	172.1890, 21.4570, 2.1050

Conversions

Conversions Part 2

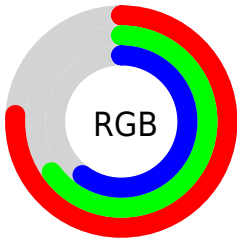
Format	Color
RYB	194, 171, 152
Decimal	12756376
CIELab	70.00, 8.55, 10.66
CIElCh	70, 13.668, 51.285
Yxy	40.7494, 0.3524, 0.3462
Android (android.graphics.Color)	4290946456 (0xFFC2A598)
YUV	172.1890, -9.9532, 19.1282
Hunter-Lab	63.8353, 4.2574, 11.7425

Details

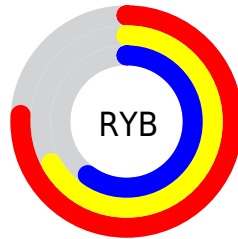
The CIELCh color $70, 13.668, 51.285$ is a light color, and the websafe version is hex `CC9999`. A complement of this color would be $72, 12.097, 234.771$, and the grayscale version is $71, 0.009, 296.813$.

A 20% lighter version of the original color is $90, 13.769, 51.670$, and $50, 13.769, 50.773$ is the 20% darker color. If you saturate the color by 10%, you get $66, 20.763, 50.754$, and if you desaturate by 10%, it is $74, 7.079, 51.889$.

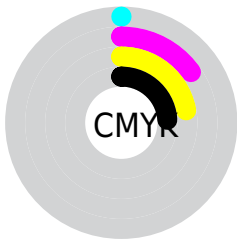
Distribution



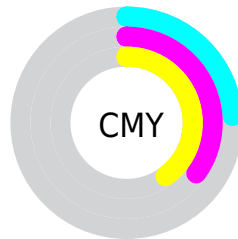
- Red (76%)
- Green (65%)
- Blue (60%)



- Red (76%)
- Yellow (67%)
- Blue (60%)



- Cyan (0%)
- Magenta (15%)
- Yellow (22%)
- Black (24%)



- Cyan (24%)
- Magenta (35%)
- Yellow (40%)

Brightness & Saturation Gradients

These gradients show how the CIELCh color 70, 13.668, 51.285 changes by changing the brightness by 10 percent. The first figure shows a shift by +10% for each color and the second figure -10%.

Similar to the brightness gradients but the following saturation gradients show a change of the CIELCh color 70, 13.668, 51.285 by changing the saturation by 10% instead.

■ 70, 13.668, 51.285

■ 70, 13.668, 51.285

■ 100, 13.668,
51.285

■ 60, 13.668, 51.285

■ 90, 13.668, 51.285

■ 50, 13.668, 51.285

■ 40, 13.668, 51.285

■ 30, 13.668, 51.285

■ 20, 13.668, 51.285

■ 10, 13.668, 51.285

■ 0, 13.668, 51.285

■ 70, 13.668, 51.285

■ 70, 13.668, 51.285

■ 66, 20.763, 50.754

■ 74, 7.079, 51.889

62, 28.398, 50.300

78, 0.954, 52.125

59, 36.575, 49.954

82, 4.754, 233.456

56, 45.244, 49.716

86, 10.093,
234.137

52, 54.242, 49.546

90, 15.107,
234.864

50, 63.176, 49.307

47, 71.188, 48.656

94, 17.309,
214.693

45, 76.729, 47.779

96, 19.853,
198.197

Harmonies

Complementary

The Complementary color scheme is a pair of colors which are on the opposite of each other on the color wheel.



70, 13.668, 51.285



72, 12.097, 234.771

Rectangle

The Rectangle color scheme consists of four colors that form a rectangle on the color wheel.



70, 13.668, 51.285



70, 13.668, 101.285



70, 13.668, 231.285



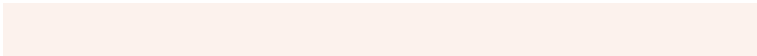
70, 13.668, 281.285

Sweetspot

The Sweet Spot groups the original color and five complimentary colors.



70, 13.667, 51.295



96, 4.426, 52.194



68, 22.539, 335.792



51, 2.967, 52.162



0, 0.000, 0.000



53, 0.007, 296.813

Same Dimension

The Same Dimension uses a secret algorithm to generate beautiful new colors.



70, 13.667, 51.295



87, 20.700, 51.027



75, 18.311, 97.915



39, 3.416, 52.021



37, 66.322, 48.261



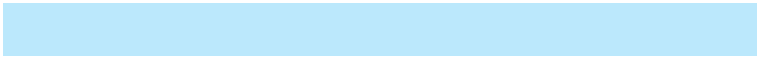
5, 11.844, 39.853

Inverse Universe

The Inverse Universe completely reimagines the original color for something new.



72, 12.097, 234.771



90, 17.772, 235.355



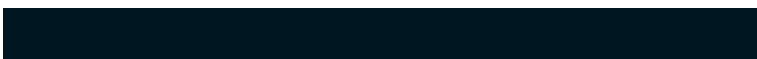
66, 18.752, 283.242



39, 3.253, 233.575



44, 35.018, 257.294



6, 10.637, 246.735

Previews

White Background



This preview shows how the CIELCh color 70, 13.668, 51.285 looks on a white background.

Color Contrast Check

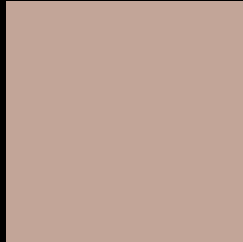
Large Text (above 18pt) WCAG AA × Fail

Any Text WCAG AA × Fail

Large Text (above 18pt) WCAG AAA × Fail

Any Text WCAG AAA × Fail

Black Background



This preview shows how the CIELCh color 70, 13.668, 51.285 looks on a black background.

Color Contrast Check

Large Text (above 18pt) WCAG AA ✓ Pass

Any Text WCAG AA ✓ Pass

Large Text (above 18pt) WCAG AAA ✓ Pass

Any Text WCAG AAA ✓ Pass

If you want to check with other color combinations, try the [Color Contrast Checker](#).

CIELCh 70, 13.668, 51.285

Background



This preview shows how black text looks on a background with the CIELCh color 70, 13.668, 51.285.



This preview shows how white text looks on a background with the CIELCh color 70, 13.668, 51.285.

Color Blindness Simulation

Color vision deficiency is a very complex topic, and I could not describe the different causes any better than Wikipedia does, so if you want to learn more, you should check out their [article about color blindness](#).

Dichromacy



Original Color

70, 13.668, 51.285

Protanopia

70, 9.132, 91.784

Deuteranopia

70, 14.022, 50.439



Tritanopia
70, 14.892, 354.781

Trichromacy



Original Color
70, 13.668, 51.285

Protanomaly
70, 10.111, 73.409

Deuteranomaly
70, 14.022, 50.439

Tritanomaly
70, 12.936, 13.330

Monochromacy



Original Color
70, 13.668, 51.285

Achromatopsia
70, 0.009, 296.813

Achromatomaly
70, 4.702, 54.953

CSS Examples

Text

The CSS property to change the color of the text to CIELCh 70, 13.668, 51.285 is called "color". The color property can be set on classes, ids or directly on the HTML element.

This example shows how text in the color `rgb(194, 165, 152)` looks like.

```
.text, #text, p{  
    color:rgb(194, 165, 152)  
}
```

If you want to add a text shadow in that color use the text-shadow property, you can generate a text shadow directly with our [CSS Text Shadow Generator](#).

Here you see how black text with a 4 pixel rgb(194, 165, 152) colored shadow looks like.

```
.shadow{ text-shadow: 4px 4px 2px rgb(194, 165, 152) }
```

Border

The CSS property to change the border of an element to CIELCh 70, 13.668, 51.285 is called "border". The border property can be set on classes, ids or directly on the HTML element.

This example shows the color as border, it can be applied via the CSS property "border" or "border-color".

```
.border, #border, table{ border:4px solid rgb(194, 165, 152) }
```

If only the border color should be changed use the property `border-color`.

```
.border{ border-color:rgb(194, 165, 152) }
```

If you want to add a box shadow in that color use:

Here you see how a box with a 4 pixel `rgb(194, 165, 152)` colored shadow looks like.

```
.boxshadow{ -moz-box-shadow:4px 4px 4px 4px rgb(194, 165, 152); -webkit-box-shadow:4px 4px 4px 4px rgb(194, 165, 152); box-shadow:4px 4px 4px 4px rgb(194, 165, 152) }
```

Background

The CSS property to change the background color of an element to CIELCh 70, 13.668, 51.285 is called "background". The background property can be set on classes, ids or directly on the HTML element.

```
.background, #background, body{  
background: rgb(194, 165, 152) }
```

If only the background color should be changed can be used:

```
.background{ background-color: rgb(194,  
165, 152) }
```

This example shows the color as background, it is applied via the CSS property "background".

To optimize and compress your CSS code, you can use our [online CSS compressor and optimizer](#) based on csstidy. If you want to create a linear or radial gradient as background or border, check our [CSS Gradient Generator](#).

Hey! You found this booklet interesting? Support Converting Colors with the new Membership Option!

The pro membership hides all ads, plus gives you double the colors in the color bucket, and more awesome pro features!

[Learn more, Memberships starting at \\$2.50/m!](#)

**Follow me
on Twitter!**

@ConvertingColor