

Converting Colors

CIELCh(70, 14.380, 49.637)

Have a look what the booklet for
CIELCh(70, 14.380, 49.637) contains.

CIELCh(70, 14.380, 49.637)	3
<i>Conversions</i>	4
<i>Details</i>	6
<i>Harmonies</i>	11
<i>Previews</i>	20
<i>Color Blindness Simulation</i>	23
<i>CSS Examples</i>	26

Color

CIELCh(70, 14.380, 49.637)

Conversions

Conversions Part 1

Format	Color
Hex	C4A598
RGB	196, 165, 152
RGB Percent	77%, 65%, 60%
CMY	0.2326, 0.3541, 0.4051
CMYK	0.00, 0.16, 0.22, 0.23
HSL	18°, 27%, 68%
HSV	18°, 22%, 77%
XYZ	41.7242, 40.7494, 35.2421
YIQ	172.7870, 22.6490, 2.5290

Conversions

Conversions Part 2

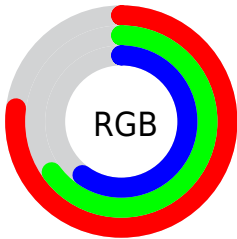
Format	Color
R _Y B	196, 170, 152
Decimal	12887448
CIE Lab	70.00, 9.31, 10.96
CIE LCh	70, 14.380, 49.637
Yxy	40.7494, 0.3544, 0.3462
Android (android.graphics.Color)	4291077528 (0xFFC4A598)
YUV	172.7870, -10.2480, 20.3578
Hunter-Lab	63.8353, 4.9600, 11.9520

Details

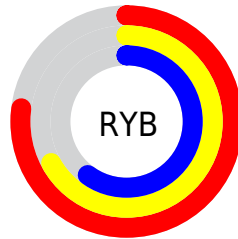
The CIELCh color **70, 14.380, 49.637** is a light color, and the websafe version is hex **CC9999**. A complement of this color would be **72, 12.611, 232.985**, and the grayscale version is **71, 0.009, 296.813**.

A 20% lighter version of the original color is **90, 14.431, 50.099**, and **50, 14.550, 49.058** is the 20% darker color. If you saturate the color by 10%, you get **66, 21.602, 49.188**, and if you desaturate by 10%, it is **74, 7.682, 50.170**.

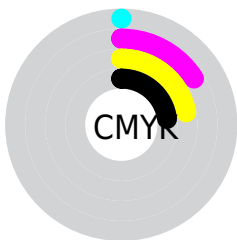
Distribution



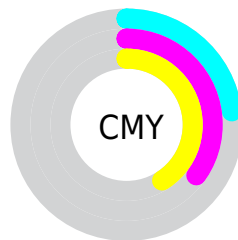
- Red (77%)
- Green (65%)
- Blue (60%)



- Red (77%)
- Yellow (67%)
- Blue (60%)



- Cyan (0%)
- Magenta (16%)
- Yellow (22%)
- Black (23%)



- Cyan (23%)
- Magenta (35%)
- Yellow (41%)

Brightness & Saturation Gradients

These gradients show how the CIELCh color 70, 14.380, 49.637 changes by changing the brightness by 10 percent. The first figure shows a shift by +10% for each color and the second figure -10%.

Similar to the brightness gradients but the following saturation gradients show a change of the CIELCh color 70, 14.380, 49.637 by changing the saturation by 10% instead.

70, 14.380, 49.637

70, 14.380, 49.637

100, 14.380,
49.637

60, 14.380, 49.637

90, 14.380, 49.637

50, 14.380, 49.637

40, 14.380, 49.637

30, 14.380, 49.637

20, 14.380, 49.637

10, 14.380, 49.637

0, 14.380, 49.637

70, 14.380, 49.637

70, 14.380, 49.637

66, 21.602, 49.188

74, 7.682, 50.170

62, 29.379, 48.828

78, 1.467, 50.510

59, 37.712, 48.588

82, 4.316, 231.623

55, 46.542, 48.469

86, 9.715, 232.242

52, 55.693, 48.429

90, 14.775,
232.921

49, 64.736, 48.317

94, 17.236,
211.593

47, 72.748, 47.760

45, 77.764, 47.085

96, 19.410,
198.225

Harmonies

Complementary

The Complementary color scheme is a pair of colors which are on the opposite of each other on the color wheel.



70, 14.380, 49.637



72, 12.611, 232.985

Rectangle

The Rectangle color scheme consists of four colors that form a rectangle on the color wheel.



70, 14.380, 49.637



70, 14.380, 99.637



70, 14.380, 229.637



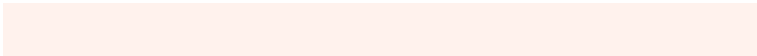
70, 14.380, 279.637

Sweetspot

The Sweet Spot groups the original color and five complimentary colors.



70, 14.379, 49.647



96, 5.236, 50.443



68, 23.846, 335.163



51, 3.410, 50.414



0, 0.000, 0.000



53, 0.007, 296.813

Same Dimension

The Same Dimension uses a secret algorithm to generate beautiful new colors.



70, 14.379, 49.647



87, 21.831, 49.409



76, 18.836, 96.758



39, 3.423, 50.334



37, 66.822, 47.569



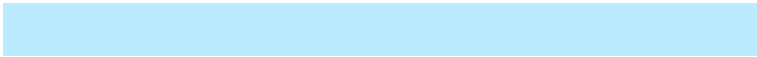
5, 11.904, 38.784

Inverse Universe

The Inverse Universe completely reimagines the original color for something new.



72, 12.611, 232.985



90, 18.529, 233.567



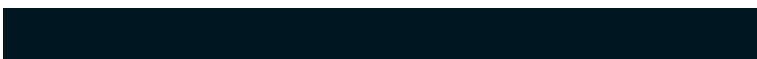
67, 19.250, 282.392



39, 3.255, 231.778



45, 34.260, 254.696



7, 10.545, 244.470

Previews

White Background



This preview shows how the CIELCh color 70, 14.380, 49.637 looks on a white background.

Color Contrast Check

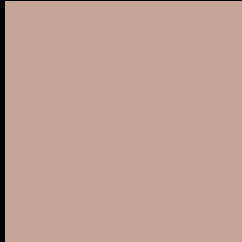
Large Text (above 18pt) WCAG AA × Fail

Any Text WCAG AA × Fail

Large Text (above 18pt) WCAG AAA × Fail

Any Text WCAG AAA × Fail

Black Background



This preview shows how the CIELCh color 70, 14.380, 49.637 looks on a black background.

Color Contrast Check

Large Text (above 18pt) WCAG AA ✓ Pass

Any Text WCAG AA ✓ Pass

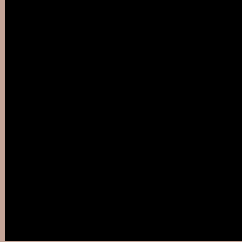
Large Text (above 18pt) WCAG AAA ✓ Pass

Any Text WCAG AAA ✓ Pass

If you want to check with other color combinations, try the [Color Contrast Checker](#).

CIELCh 70, 14.380, 49.637

Background



This preview shows how black text looks on a background with the CIELCh color 70, 14.380, 49.637.



This preview shows how white text looks on a background with the CIELCh color 70, 14.380, 49.637.

Color Blindness Simulation

Color vision deficiency is a very complex topic, and I could not describe the different causes any better than Wikipedia does, so if you want to learn more, you should check out their [article about color blindness](#).

Dichromacy



Original Color


70, 14.380, 49.637

Protanopia

70, 9.132, 91.784

Deuteranopia

70, 14.022, 50.439



Tritanopia
70, 15.820, 354.319

Trichromacy



Original Color
70, 14.380, 49.637

Protanomaly
70, 10.111, 73.409

Deuteranomaly
70, 14.022, 50.439

Tritanomaly
70, 13.787, 11.592

Monochromacy



Original Color
70, 14.380, 49.637

Achromatopsia
70, 0.009, 296.813

Achromatomaly
70, 5.101, 44.950

CSS Examples

Text

The CSS property to change the color of the text to CIELCh 70, 14.380, 49.637 is called "color". The color property can be set on classes, ids or directly on the HTML element.

This example shows how text in the color `rgb(196, 165, 152)` looks like.

```
.text, #text, p{  
    color:rgb(196, 165, 152)  
}
```

If you want to add a text shadow in that color use the text-shadow property, you can generate a text shadow directly with our [CSS Text Shadow Generator](#).

Here you see how black text with a 4 pixel rgb(196, 165, 152) colored shadow looks like.

```
.shadow{ text-shadow: 4px 4px 2px rgb(196, 165, 152) }
```

Border

The CSS property to change the border of an element to CIELCh 70, 14.380, 49.637 is called "border". The border property can be set on classes, ids or directly on the HTML element.

This example shows the color as border, it can be applied via the CSS property "border" or "border-color".

```
.border, #border, table{ border:4px solid rgb(196, 165, 152) }
```

If only the border color should be changed use the property `border-color`.

```
.border{ border-color:rgb(196, 165, 152) }
```

If you want to add a box shadow in that color use:

Here you see how a box with a 4 pixel `rgb(196, 165, 152)` colored shadow looks like.

```
.boxshadow{ -moz-box-shadow:4px 4px 4px  
4px rgb(196, 165, 152); -webkit-box-  
shadow:4px 4px 4px 4px rgb(196, 165, 152);  
box-shadow:4px 4px 4px 4px rgb(196, 165,  
152) }
```

Background

The CSS property to change the background color of an element to CIELCh 70, 14.380, 49.637 is called "background". The background property can be set on classes, ids or directly on the HTML element.

```
.background, #background, body{  
background: rgb(196, 165, 152) }
```

If only the background color should be changed can be used:

```
.background{ background-color: rgb(196,  
165, 152) }
```

This example shows the color as background, it is applied via the CSS property "background".

To optimize and compress your CSS code, you can use our [online CSS compressor and optimizer](#) based on csstidy. If you want to create a linear or radial gradient as background or border, check our [CSS Gradient Generator](#).

Hey! You found this booklet interesting? Support Converting Colors with the new Membership Option!

The pro membership hides all ads, plus gives you double the colors in the color bucket, and more awesome pro features!

[Learn more, Memberships starting at \\$2.50/m!](#)

**Follow me
on Twitter!**

@ConvertingColor