

Converting Colors

CIELCh(70, 14.739, 33.351)

Have a look what the booklet for
CIELCh(70, 14.739, 33.351) contains.

CIELCh(70, 14.719, 33.348)	3
<i>Conversions</i>	4
<i>Details</i>	6
<i>Harmonies</i>	11
<i>Previews</i>	20
<i>Color Blindness Simulation</i>	23
<i>CSS Examples</i>	26

Color

CIELCh(70, 14.719, 33.348)

Conversions

Conversions Part 1

Format	Color
Hex	C7A39D
RGB	199, 163, 157
RGB Percent	78%, 64%, 62%
CMY	0.2198, 0.3609, 0.3845
CMYK	0.00, 0.18, 0.21, 0.22
HSL	9°, 27%, 70%
HSV	9°, 21%, 78%
XYZ	42.7144, 40.7494, 37.4947
YIQ	173.0800, 23.3820, 5.7660

Conversions

Conversions Part 2

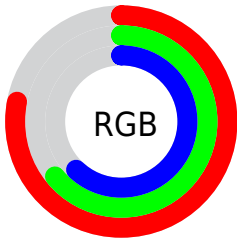
Format	Color
R _Y B	199, 164, 157
Decimal	13083549
CIE Lab	70.00, 12.30, 8.09
CIE LCh	70, 14.719, 33.348
Yxy	40.7494, 0.3531, 0.3369
Android (android.graphics.Color)	4291273629 (0xFFC7A39D)
YUV	173.0800, -7.9274, 22.7318
Hunter-Lab	63.8353, 7.7288, 9.8597

Details

The CIELCh color $70, 14.719, 33.348$ is a light color, and the websafe version is hex `CC9999`. A complement of this color would be $76, 12.754, 213.302$, and the grayscale version is $71, 0.009, 296.813$.

A 20% lighter version of the original color is $90, 14.180, 32.904$, and $50, 14.536, 32.443$ is the 20% darker color. If you saturate the color by 10%, you get $65, 22.613, 33.750$, and if you desaturate by 10%, it is $75, 7.430, 33.106$.

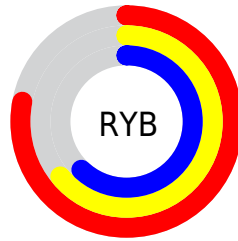
Distribution



Red (78%)

Green (64%)

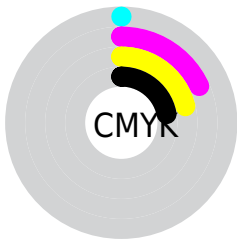
Blue (62%)



Red (78%)

Yellow (64%)

Blue (62%)

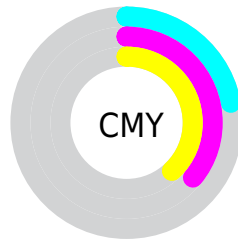


Cyan (0%)

Magenta (18%)

Yellow (21%)

Black (22%)



Cyan (22%)

Magenta (36%)

Yellow (38%)

Brightness & Saturation Gradients

These gradients show how the CIELCh color 70, 14.719, 33.348 changes by changing the brightness by 10 percent. The first figure shows a shift by +10% for each color and the second figure -10%.

Similar to the brightness gradients but the following saturation gradients show a change of the CIELCh color 70, 14.719, 33.348 by changing the saturation by 10% instead.

 70, 14.719, 33.348

 70, 14.719, 33.348

 100, 14.719,
33.348

 60, 14.719, 33.348

 90, 14.719, 33.348

 50, 14.719, 33.348

 40, 14.719, 33.348

 30, 14.719, 33.348

 20, 14.719, 33.348

 10, 14.719, 33.348

 0, 14.719, 33.348

 70, 14.719, 33.348

 70, 14.719, 33.348

 65, 22.613, 33.750

 75, 7.430, 33.106

61, 31.131, 34.350

80, 0.711, 32.316

57, 40.243, 35.212

85, 5.490, 213.199

53, 49.853, 36.382

90, 11.226,
213.224

49, 59.757, 37.863

95, 16.447,
210.751

46, 69.527, 39.540

44, 78.228, 41.001

96, 18.419,
198.287

43, 84.212, 41.903

Harmonies

Complementary

The Complementary color scheme is a pair of colors which are on the opposite of each other on the color wheel.



70, 14.719, 33.348



76, 12.754, 213.302

Rectangle

The Rectangle color scheme consists of four colors that form a rectangle on the color wheel.



70, 14.719, 33.348



70, 14.719, 83.348



70, 14.719, 213.348



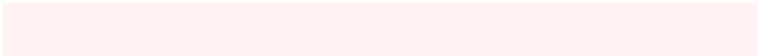
70, 14.719, 263.348

Sweetspot

The Sweet Spot groups the original color and five complimentary colors.



70, 14.718, 33.357



96, 4.808, 32.984



70, 25.196, 329.550



51, 3.198, 33.004



0, 0.000, 0.000



53, 0.007, 296.813

Same Dimension

The Same Dimension uses a secret algorithm to generate beautiful new colors.



70, 14.718, 33.357



85, 21.704, 33.503



75, 15.551, 85.659



39, 3.765, 33.068



35, 72.322, 42.104



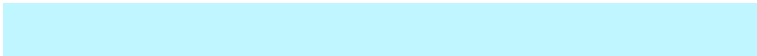
4, 14.588, 27.513

Inverse Universe

The Inverse Universe completely reimagines the original color for something new.



76, 12.754, 213.302



94, 18.210, 213.400



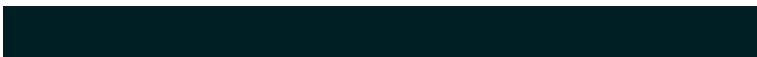
70, 15.345, 271.439



41, 3.546, 213.192



53, 31.272, 222.860



10, 11.448, 216.424

Previews

White Background



This preview shows how the CIELCh color 70, 14.719, 33.348 looks on a white background.

Color Contrast Check

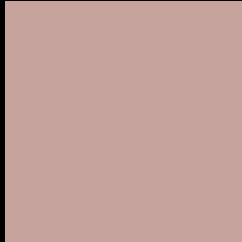
Large Text (above 18pt) WCAG AA × Fail

Any Text WCAG AA × Fail

Large Text (above 18pt) WCAG AAA × Fail

Any Text WCAG AAA × Fail

Black Background



This preview shows how the CIELCh color 70, 14.719, 33.348 looks on a black background.

Color Contrast Check

Large Text (above 18pt) WCAG AA ✓ Pass

Any Text WCAG AA ✓ Pass

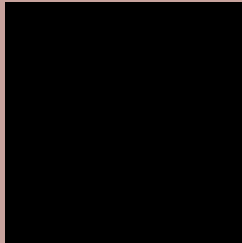
Large Text (above 18pt) WCAG AAA ✓ Pass

Any Text WCAG AAA ✓ Pass

If you want to check with other color combinations, try the [Color Contrast Checker](#).

CIELCh 70, 14.719, 33.348

Background



This preview shows how black text looks on a background with the CIELCh color 70, 14.719, 33.348.



This preview shows how white text looks on a background with the CIELCh color 70, 14.719, 33.348.

Color Blindness Simulation

Color vision deficiency is a very complex topic, and I could not describe the different causes any better than Wikipedia does, so if you want to learn more, you should check out their [article about color blindness](#).

Dichromacy



Original Color

70, 14.719, 33.348

Protanopia

70, 5.911, 86.485

Deuteranopia

70, 11.945, 41.571



Tritanopia
70, 16.677, 357.963

Trichromacy



Original Color
70, 14.719, 33.348

Protanomaly
70, 7.950, 53.012

Deuteranomaly
70, 12.905, 37.500

Tritanomaly
70, 15.022, 10.382

Monochromacy



Original Color
70, 14.719, 33.348

Achromatopsia
71, 0.009, 296.813

Achromatomaly
70, 5.103, 32.047

CSS Examples

Text

The CSS property to change the color of the text to CIELCh 70, 14.719, 33.348 is called "color". The color property can be set on classes, ids or directly on the HTML element.

This example shows how text in the color `rgb(199, 163, 157)` looks like.

```
.text, #text, p{  
    color:rgb(199, 163, 157)  
}
```

If you want to add a text shadow in that color use the text-shadow property, you can generate a text shadow directly with our [CSS Text Shadow Generator](#).

Here you see how black text with a 4 pixel rgb(199, 163, 157) colored shadow looks like.

```
.shadow{ text-shadow: 4px 4px 2px rgb(199, 163, 157) }
```

Border

The CSS property to change the border of an element to CIELCh 70, 14.719, 33.348 is called "border". The border property can be set on classes, ids or directly on the HTML element.

This example shows the color as border, it can be applied via the CSS property "border" or "border-color".

```
.border, #border, table{ border:4px solid rgb(199, 163, 157) }
```

If only the border color should be changed use the property `border-color`.

```
.border{ border-color:rgb(199, 163, 157) }
```

If you want to add a box shadow in that color use:

Here you see how a box with a 4 pixel `rgb(199, 163, 157)` colored shadow looks like.

```
.boxshadow{ -moz-box-shadow:4px 4px 4px  
4px rgb(199, 163, 157); -webkit-box-  
shadow:4px 4px 4px 4px rgb(199, 163, 157);  
box-shadow:4px 4px 4px 4px rgb(199, 163,  
157) }
```

Background

The CSS property to change the background color of an element to CIELCh 70, 14.719, 33.348 is called "background". The background property can be set on classes, ids or directly on the HTML element.

```
.background, #background, body{  
background: rgb(199, 163, 157) }
```

If only the background color should be changed can be used:

```
.background{ background-color: rgb(199,  
163, 157) }
```

This example shows the color as background, it is applied via the CSS property "background".

To optimize and compress your CSS code, you can use our [online CSS compressor and optimizer](#) based on csstidy. If you want to create a linear or radial gradient as background or border, check our [CSS Gradient Generator](#).

Hey! You found this booklet interesting? Support Converting Colors with the new Membership Option!

The pro membership hides all ads, plus gives you double the colors in the color bucket, and more awesome pro features!

[Learn more, Memberships starting at \\$2.50/m!](#)

**Follow me
on Twitter!**

@ConvertingColor