

Converting Colors

CIELCh(70, 15.461, 22.869)

Have a look what the booklet for
CIELCh(70, 15.461, 22.869) contains.

CIELCh(70, 15.407, 22.774)	3
<i>Conversions</i>	4
<i>Details</i>	6
<i>Harmonies</i>	11
<i>Previews</i>	20
<i>Color Blindness Simulation</i>	23
<i>CSS Examples</i>	26

Color

CIELCh(70, 15.407, 22.774)

Conversions

Conversions Part 1

Format	Color
Hex	C9A2A1
RGB	201, 162, 161
RGB Percent	79%, 64%, 63%
CMY	0.2124, 0.3653, 0.3692
CMYK	0.00, 0.19, 0.20, 0.21
HSL	2°, 27%, 71%
HSV	2°, 20%, 79%
XYZ	43.3568, 40.7494, 39.2277
YIQ	173.5470, 23.5650, 7.9570

Conversions

Conversions Part 2

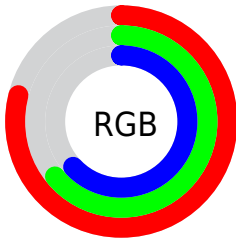
Format	Color
R _Y B	201, 162, 161
Decimal	13214369
CIE Lab	70.00, 14.21, 5.96
CIE LCh	70, 15.407, 22.774
Yxy	40.7494, 0.3515, 0.3304
Android (android.graphics.Color)	4291404449 (0xFFC9A2A1)
YUV	173.5470, -6.1857, 24.0763
Hunter-Lab	63.8353, 9.5251, 8.2501

Details

The CIELCh color **70, 15.407, 22.774** is a light color, and the websafe version is hex **CC9999**. A complement of this color would be **78, 13.502, 200.727**, and the grayscale version is **71, 0.009, 296.813**.

A 20% lighter version of the original color is **90, 14.106, 22.476**, and **50, 15.313, 21.228** is the 20% darker color. If you saturate the color by 10%, you get **65, 24.062, 23.742**, and if you desaturate by 10%, it is **75, 7.369, 22.023**.

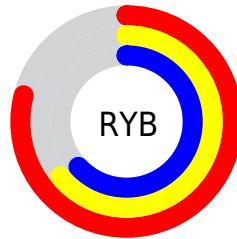
Distribution



Red (79%)

Green (64%)

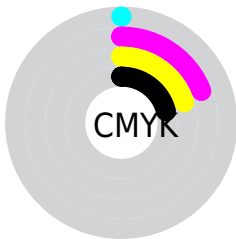
Blue (63%)



Red (79%)

Yellow (64%)

Blue (63%)

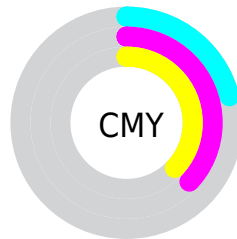


Cyan (0%)

Magenta (19%)

Yellow (20%)

Black (21%)



Cyan (21%)

Magenta (37%)

Yellow (37%)

Brightness & Saturation Gradients

These gradients show how the CIELCh color 70, 15.407, 22.774 changes by changing the brightness by 10 percent. The first figure shows a shift by +10% for each color and the second figure -10%.

Similar to the brightness gradients but the following saturation gradients show a change of the CIELCh color 70, 15.407, 22.774 by changing the saturation by 10% instead.

70, 15.407, 22.774

70, 15.407, 22.774

100, 15.407,
22.774

60, 15.407, 22.774

90, 15.407, 22.774

50, 15.407, 22.774

40, 15.407, 22.774

30, 15.407, 22.774

20, 15.407, 22.774

10, 15.407, 22.774

0, 15.407, 22.774

70, 15.407, 22.774

70, 15.407, 22.774

65, 24.062, 23.742

75, 7.369, 22.023

60, 33.309, 25.000

81, 0.063, 210.445

55, 43.047, 26.648

87, 6.929, 201.212

51, 53.088, 28.784

92, 13.284,
200.851

47, 63.140, 31.466

96, 17.845,
198.324

45, 72.759, 34.607

43, 81.091, 37.738

42, 86.973, 40.213

42, 87.025, 40.238

Harmonies

Complementary

The Complementary color scheme is a pair of colors which are on the opposite of each other on the color wheel.



70, 15.407, 22.774



78, 13.502, 200.727

Rectangle

The Rectangle color scheme consists of four colors that form a rectangle on the color wheel.



70, 15.407, 22.774



70, 15.407, 72.774



70, 15.407, 202.774



70, 15.407, 252.774

Sweetspot

The Sweet Spot groups the original color and five complimentary colors.



70, 15.405, 22.782



96, 5.333, 21.746



71, 25.938, 325.971



51, 3.546, 21.797



0, 0.000, 0.000



53, 0.007, 296.813

Same Dimension

The Same Dimension uses a secret algorithm to generate beautiful new colors.



70, 15.405, 22.782



84, 22.935, 23.176



75, 13.509, 74.702



39, 4.174, 21.985



34, 74.300, 40.110



4, 15.636, 20.728

Inverse Universe

The Inverse Universe completely reimagines the original color for something new.



78, 13.502, 200.727



96, 19.461, 200.557



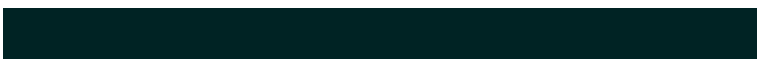
73, 12.891, 260.084



41, 3.933, 201.203



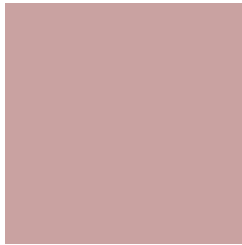
59, 34.665, 200.352



11, 12.634, 199.452

Previews

White Background



This preview shows how the CIELCh color 70, 15.407, 22.774 looks on a white background.

Color Contrast Check

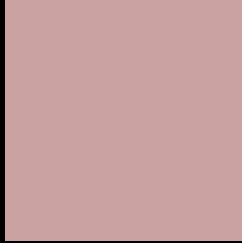
Large Text (above 18pt) WCAG AA × Fail

Any Text WCAG AA × Fail

Large Text (above 18pt) WCAG AAA × Fail

Any Text WCAG AAA × Fail

Black Background



This preview shows how the CIELCh color 70, 15.407, 22.774 looks on a black background.

Color Contrast Check

Large Text (above 18pt) WCAG AA ✓ Pass

Any Text WCAG AA ✓ Pass

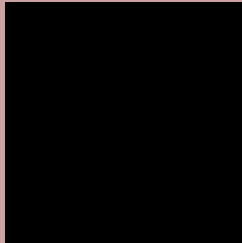
Large Text (above 18pt) WCAG AAA ✓ Pass

Any Text WCAG AAA ✓ Pass

If you want to check with other color combinations, try the [Color Contrast Checker](#).

CIELCh 70, 15.407, 22.774

Background



This preview shows how black text looks on a background with the CIELCh color 70, 15.407, 22.774.



This preview shows how white text looks on a background with the CIELCh color 70, 15.407, 22.774.

Color Blindness Simulation

Color vision deficiency is a very complex topic, and I could not describe the different causes any better than Wikipedia does, so if you want to learn more, you should check out their [article about color blindness](#).

Dichromacy



Original Color

70, 15.407, 22.774

Protanopia

70, 3.313, 74.640

Deuteranopia

70, 10.974, 34.576



Tritanopia
70, 17.416, 359.076

Trichromacy



Original Color
70, 15.407, 22.774

Protanomaly
70, 6.936, 38.154

Deuteranomaly
70, 12.423, 30.477

Tritanomaly
70, 16.362, 7.514

Monochromacy



Original Color
70, 15.407, 22.774

Achromatopsia
71, 0.009, 296.813

Achromatomaly
70, 5.357, 19.782

CSS Examples

Text

The CSS property to change the color of the text to CIELCh 70, 15.407, 22.774 is called "color". The color property can be set on classes, ids or directly on the HTML element.

This example shows how text in the color `rgb(201, 162, 161)` looks like.

```
.text, #text, p{  
    color:rgb(201, 162, 161)  
}
```

If you want to add a text shadow in that color use the text-shadow property, you can generate a text shadow directly with our [CSS Text Shadow Generator](#).

Here you see how black text with a 4 pixel rgb(201, 162, 161) colored shadow looks like.

```
.shadow{ text-shadow: 4px 4px 2px rgb(201, 162, 161) }
```

Border

The CSS property to change the border of an element to CIELCh 70, 15.407, 22.774 is called "border". The border property can be set on classes, ids or directly on the HTML element.

This example shows the color as border, it can be applied via the CSS property "border" or "border-color".

```
.border, #border, table{ border:4px solid rgb(201, 162, 161) }
```

If only the border color should be changed use the property `border-color`.

```
.border{ border-color:rgb(201, 162, 161) }
```

If you want to add a box shadow in that color use:

Here you see how a box with a 4 pixel `rgb(201, 162, 161)` colored shadow looks like.

```
.boxshadow{ -moz-box-shadow:4px 4px 4px  
4px rgb(201, 162, 161); -webkit-box-  
shadow:4px 4px 4px 4px rgb(201, 162, 161);  
box-shadow:4px 4px 4px 4px rgb(201, 162,  
161) }
```

Background

The CSS property to change the background color of an element to CIELCh 70, 15.407, 22.774 is called "background". The background property can be set on classes, ids or directly on the HTML element.

```
.background, #background, body{  
background: rgb(201, 162, 161) }
```

If only the background color should be changed can be used:

```
.background{ background-color: rgb(201,  
162, 161) }
```

This example shows the color as background, it is applied via the CSS property "background".

To optimize and compress your CSS code, you can use our [online CSS compressor and optimizer](#) based on csstidy. If you want to create a linear or radial gradient as background or border, check our [CSS Gradient Generator](#).

Hey! You found this booklet interesting? Support Converting Colors with the new Membership Option!

The pro membership hides all ads, plus gives you double the colors in the color bucket, and more awesome pro features!

[Learn more, Memberships starting at \\$2.50/m!](#)

**Follow me
on Twitter!**

@ConvertingColor