

Converting Colors

CIELCh(70, 17.576, 50.806)

Have a look what the booklet for
CIELCh(70, 17.576, 50.806) contains.

CIELCh(70, 17.503, 50.156)	3
<i>Conversions</i>	4
<i>Details</i>	6
<i>Harmonies</i>	11
<i>Previews</i>	20
<i>Color Blindness Simulation</i>	23
<i>CSS Examples</i>	26

Color

CIELCh(70, 17.503, 50.156)

Conversions

Conversions Part 1

Format	Color
Hex	C8A393
RGB	200, 163, 147
RGB Percent	78%, 64%, 58%
CMY	0.2144, 0.3595, 0.4223
CMYK	0.00, 0.18, 0.26, 0.21
HSL	18°, 33%, 68%
HSV	18°, 26%, 79%
XYZ	42.3536, 40.7494, 33.3656
YIQ	172.2390, 27.1880, 2.8680

Conversions

Conversions Part 2

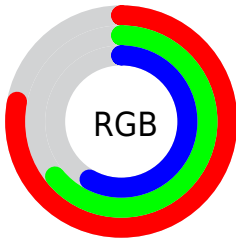
Format	Color
R _Y B	200, 170, 147
Decimal	13149075
CIE Lab	70.00, 11.21, 13.44
CIE LCh	70, 17.503, 50.156
Yxy	40.7494, 0.3636, 0.3499
Android (android.graphics.Color)	4291339155 (0xFFC8A393)
YUV	172.2390, -12.4428, 24.3464
Hunter-Lab	63.8353, 6.7200, 13.6948

Details

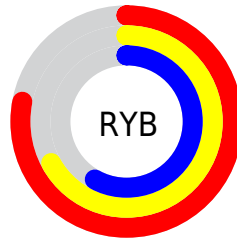
The CIELCh color $70, 17.503, 50.156$ is a light color, and the websafe version is hex `CC9999`. A complement of this color would be $73, 14.978, 234.325$, and the grayscale version is $71, 0.009, 296.813$.

A 20% lighter version of the original color is $90, 16.670, 51.899$, and $50, 17.590, 50.306$ is the 20% darker color. If you saturate the color by 10%, you get $66, 25.070, 49.705$, and if you desaturate by 10%, it is $74, 10.480, 50.702$.

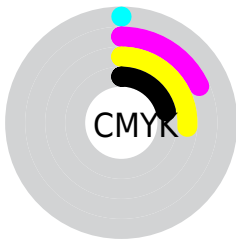
Distribution



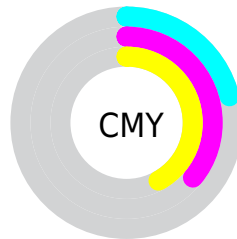
- Red (78%)
- Green (64%)
- Blue (58%)



- Red (78%)
- Yellow (67%)
- Blue (58%)



- Cyan (0%)
- Magenta (18%)
- Yellow (26%)
- Black (21%)



- Cyan (21%)
- Magenta (36%)
- Yellow (42%)


Brightness & Saturation Gradients

These gradients show how the CIELCh color 70, 17.503, 50.156 changes by changing the brightness by 10 percent. The first figure shows a shift by +10% for each color and the second figure -10%.

Similar to the brightness gradients but the following saturation gradients show a change of the CIELCh color 70, 17.503, 50.156 by changing the saturation by 10% instead.

 70, 17.503, 50.156

 70, 17.503, 50.156

 100, 17.503,
50.156

 60, 17.503, 50.156

 90, 17.503, 50.156

 50, 17.503, 50.156

 40, 17.503, 50.156

 30, 17.503, 50.156

 20, 17.503, 50.156

 10, 17.503, 50.156

 0, 17.503, 50.156

 70, 17.503, 50.156

 70, 17.503, 50.156

 66, 25.070, 49.705

 74, 10.480, 50.702

62, 33.205, 49.350

78, 3.963, 51.246

59, 41.887, 49.114

82, 2.096, 232.284

55, 51.019, 48.983

86, 7.748, 232.808

52, 60.337, 48.878

91, 13.040,
233.498

50, 69.231, 48.575

94, 15.819,
213.220

47, 76.538, 47.615

46, 78.918, 47.336

96, 17.999,
198.314

Harmonies

Complementary

The Complementary color scheme is a pair of colors which are on the opposite of each other on the color wheel.



70, 17.503, 50.156



73, 14.978, 234.325

Rectangle

The Rectangle color scheme consists of four colors that form a rectangle on the color wheel.



70, 17.503, 50.156



70, 17.503, 100.156



70, 17.503, 230.156



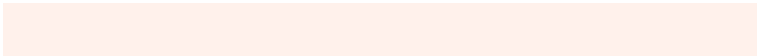
70, 17.503, 280.156

Sweetspot

The Sweet Spot groups the original color and five complimentary colors.



70, 17.502, 50.165



96, 6.001, 51.166



67, 28.308, 336.167



51, 4.290, 51.085



0, 0.000, 0.000



53, 0.007, 296.813

Same Dimension

The Same Dimension uses a secret algorithm to generate beautiful new colors.



70, 17.502, 50.165



84, 26.345, 49.878



77, 23.004, 97.335



40, 3.494, 51.099



38, 67.403, 47.836



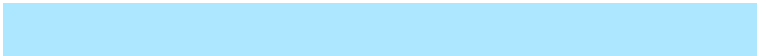
5, 13.551, 38.136

Inverse Universe

The Inverse Universe completely reimagines the original color for something new.



73, 14.978, 234.325



88, 21.646, 235.138



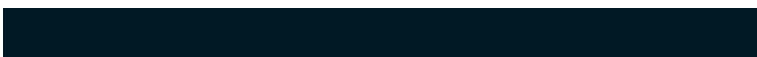
66, 23.704, 284.023



40, 3.324, 232.598



45, 35.020, 255.959



7, 11.390, 245.087

Previews

White Background



This preview shows how the CIELCh color 70, 17.503, 50.156 looks on a white background.

Color Contrast Check

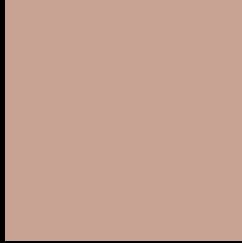
Large Text (above 18pt) WCAG AA × Fail

Any Text WCAG AA × Fail

Large Text (above 18pt) WCAG AAA × Fail

Any Text WCAG AAA × Fail

Black Background



This preview shows how the CIELCh color 70, 17.503, 50.156 looks on a black background.

Color Contrast Check

Large Text (above 18pt) WCAG AA ✓ Pass

Any Text WCAG AA ✓ Pass

Large Text (above 18pt) WCAG AAA ✓ Pass

Any Text WCAG AAA ✓ Pass

If you want to check with other color combinations, try the [Color Contrast Checker](#).

CIELCh 70, 17.503, 50.156

Background



This preview shows how black text looks on a background with the CIELCh color 70, 17.503, 50.156.



This preview shows how white text looks on a background with the CIELCh color 70, 17.503, 50.156.

Color Blindness Simulation

Color vision deficiency is a very complex topic, and I could not describe the different causes any better than Wikipedia does, so if you want to learn more, you should check out their [article about color blindness](#).

Dichromacy



Original Color


70, 17.503, 50.156

Protanopia

70, 11.340, 92.845

Deuteranopia

70, 16.041, 57.663



Tritanopia
70, 17.780, 359.597

Trichromacy



Original Color
70, 17.503, 50.156

Protanomaly
70, 12.443, 71.541

Deuteranomaly
70, 16.734, 53.740

Tritanomaly
70, 16.142, 17.024

Monochromacy



Original Color
70, 17.503, 50.156

Achromatopsia
71, 0.009, 296.813

Achromatomaly
70, 6.055, 46.443

CSS Examples

Text

The CSS property to change the color of the text to CIELCh 70, 17.503, 50.156 is called "color". The color property can be set on classes, ids or directly on the HTML element.

This example shows how text in the color `rgb(200, 163, 147)` looks like.

```
.text, #text, p{  
    color:rgb(200, 163, 147)  
}
```

If you want to add a text shadow in that color use the text-shadow property, you can generate a text shadow directly with our [CSS Text Shadow Generator](#).

Here you see how black text with a 4 pixel rgb(200, 163, 147) colored shadow looks like.

```
.shadow{ text-shadow: 4px 4px 2px rgb(200, 163, 147) }
```

Border

The CSS property to change the border of an element to CIELCh 70, 17.503, 50.156 is called "border". The border property can be set on classes, ids or directly on the HTML element.

This example shows the color as border, it can be applied via the CSS property "border" or "border-color".

```
.border, #border, table{ border:4px solid rgb(200, 163, 147) }
```

If only the border color should be changed use the property `border-color`.

```
.border{ border-color:rgb(200, 163, 147) }
```

If you want to add a box shadow in that color use:

Here you see how a box with a 4 pixel `rgb(200, 163, 147)` colored shadow looks like.

```
.boxshadow{ -moz-box-shadow:4px 4px 4px  
4px rgb(200, 163, 147); -webkit-box-  
shadow:4px 4px 4px 4px rgb(200, 163, 147);  
box-shadow:4px 4px 4px 4px rgb(200, 163,  
147) }
```

Background

The CSS property to change the background color of an element to CIELCh 70, 17.503, 50.156 is called "background". The background property can be set on classes, ids or directly on the HTML element.

```
.background, #background, body{  
background: rgb(200, 163, 147) }
```

If only the background color should be changed can be used:

```
.background{ background-color: rgb(200,  
163, 147) }
```

This example shows the color as background, it is applied via the CSS property "background".

To optimize and compress your CSS code, you can use our [online CSS compressor and optimizer](#) based on csstidy. If you want to create a linear or radial gradient as background or border, check our [CSS Gradient Generator](#).

Hey! You found this booklet interesting? Support Converting Colors with the new Membership Option!

The pro membership hides all ads, plus gives you double the colors in the color bucket, and more awesome pro features!

[Learn more, Memberships starting at \\$2.50/m!](#)

**Follow me
on Twitter!**

@ConvertingColor