

Converting Colors

CIELCh(70, 18.042, 69.568)

Have a look what the booklet for
CIELCh(70, 18.042, 69.568) contains.

CIELCh(70, 17.923, 69.045)	3
<i>Conversions</i>	4
<i>Details</i>	6
<i>Harmonies</i>	11
<i>Previews</i>	20
<i>Color Blindness Simulation</i>	23
<i>CSS Examples</i>	26

Color

CIELCh(70, 17.923, 69.045)

Conversions

Conversions Part 1

Format	Color
Hex	C2A68D
RGB	194, 166, 141
RGB Percent	76%, 65%, 55%
CMY	0.2386, 0.3484, 0.4464
CMYK	0.00, 0.14, 0.27, 0.24
HSL	28°, 30%, 66%
HSV	28°, 27%, 76%
XYZ	40.7752, 40.7494, 30.9761
YIQ	171.5220, 24.7130, -1.8390

Conversions

Conversions Part 2

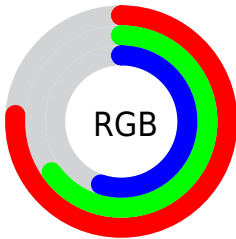
Format	Color
RYB	194, 188, 141
Decimal	12756621
CIELab	70.00, 6.41, 16.74
CIELCh	70, 17.923, 69.045
Yxy	40.7494, 0.3624, 0.3622
Android (android.graphics.Color)	4290946701 (0xFFC2A68D)
YUV	171.5220, -15.0473, 19.7132
Hunter-Lab	63.8353, 2.3064, 15.9142

Details

The CIELCh color $70, 17.923, 69.045$ is a light color, and the websafe version is hex `CC9999`. A complement of this color would be $68, 16.422, 256.365$, and the grayscale version is $70, 0.009, 296.813$.

A 20% lighter version of the original color is $90, 17.766, 68.788$, and $50, 17.899, 67.996$ is the 20% darker color. If you saturate the color by 10%, you get $67, 25.139, 67.868$, and if you desaturate by 10%, it is $73, 11.067, 70.231$.

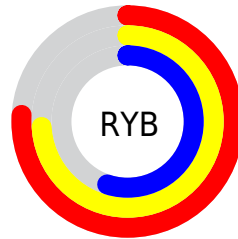
Distribution



Red (76%)

Green (65%)

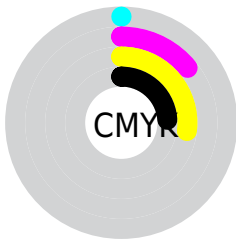
Blue (55%)



Red (76%)

Yellow (74%)

Blue (55%)

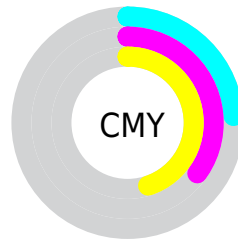


Cyan (0%)

Magenta (14%)

Yellow (27%)

Black (24%)



Cyan (24%)

Magenta (35%)

Yellow (45%)

Brightness & Saturation Gradients

These gradients show how the CIELCh color 70, 17.923, 69.045 changes by changing the brightness by 10 percent. The first figure shows a shift by +10% for each color and the second figure -10%.

Similar to the brightness gradients but the following saturation gradients show a change of the CIELCh color 70, 17.923, 69.045 by changing the saturation by 10% instead.

70, 17.923, 69.045

70, 17.923, 69.045

100, 17.923,
69.045

60, 17.923, 69.045

90, 17.923, 69.045

50, 17.923, 69.045

40, 17.923, 69.045

30, 17.923, 69.045

20, 17.923, 69.045

10, 17.923, 69.045

0, 17.923, 69.045

70, 17.923, 69.045

70, 17.923, 69.045

67, 25.139, 67.868

73, 11.067, 70.231

64, 32.708, 66.683

76, 4.551, 71.363

61, 40.581, 65.489

79, 1.651, 252.844

59, 48.615, 64.251

83, 7.572, 253.804

56, 56.486, 62.875

86, 13.241,
254.891

54, 63.559, 61.153

89, 17.623,
253.088

51, 68.963, 58.789

51, 70.358, 58.184

92, 16.521,
231.094

94, 17.869,
209.687

96, 19.864,
198.196

Harmonies

Complementary

The Complementary color scheme is a pair of colors which are on the opposite of each other on the color wheel.



70, 17.923, 69.045



68, 16.422, 256.365

Rectangle

The Rectangle color scheme consists of four colors that form a rectangle on the color wheel.



70, 17.923, 69.045



70, 17.923, 119.045



70, 17.923, 249.045



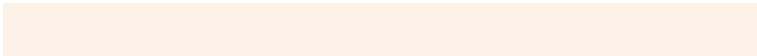
70, 17.923, 299.045

Sweetspot

The Sweet Spot groups the original color and five complimentary colors.



70, 17.923, 69.053



96, 6.184, 71.275



65, 25.480, 344.283



51, 4.449, 71.107



0, 0.000, 0.000



53, 0.007, 296.813

Same Dimension

The Same Dimension uses a secret algorithm to generate beautiful new colors.



70, 17.923, 69.053



86, 27.252, 68.316



77, 27.185, 106.115



39, 3.547, 71.139



42, 60.935, 58.761



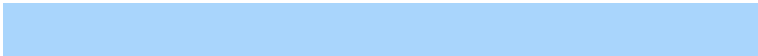
6, 11.463, 55.081

Inverse Universe

The Inverse Universe completely reimagines the original color for something new.



68, 16.422, 256.365



84, 24.409, 257.590



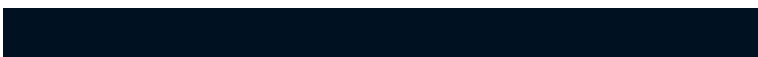
61, 28.881, 292.149



39, 3.457, 253.540



36, 47.803, 280.613



5, 12.437, 266.910

Previews

White Background



This preview shows how the CIELCh color 70, 17.923, 69.045 looks on a white background.

Color Contrast Check

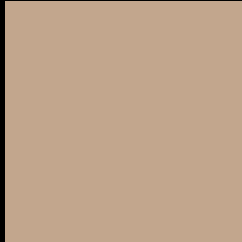
Large Text (above 18pt) WCAG AA × Fail

Any Text WCAG AA × Fail

Large Text (above 18pt) WCAG AAA × Fail

Any Text WCAG AAA × Fail

Black Background



This preview shows how the CIELCh color 70, 17.923, 69.045 looks on a black background.

Color Contrast Check

Large Text (above 18pt) WCAG AA ✓ Pass

Any Text WCAG AA ✓ Pass

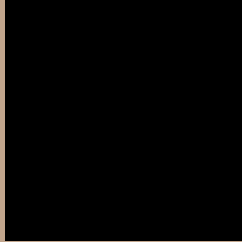
Large Text (above 18pt) WCAG AAA ✓ Pass

Any Text WCAG AAA ✓ Pass

If you want to check with other color combinations, try the [Color Contrast Checker](#).

CIELCh 70, 17.923, 69.045

Background



This preview shows how black text looks on a background with the CIELCh color 70, 17.923, 69.045.



This preview shows how white text looks on a background with the CIELCh color 70, 17.923, 69.045.

Color Blindness Simulation

Color vision deficiency is a very complex topic, and I could not describe the different causes any better than Wikipedia does, so if you want to learn more, you should check out their [article about color blindness](#).

Dichromacy



Original Color

70, 17.923, 69.045

Protanopia

70, 15.763, 93.811

Deuteranopia

70, 18.983, 63.344



Tritanopia
70, 15.241, 355.469

Trichromacy



Original Color
70, 17.923, 69.045

Protanomaly
70, 16.281, 83.605

Deuteranomaly
70, 18.678, 64.214

Tritanomaly
70, 13.019, 25.286

Monochromacy



Original Color
70, 17.923, 69.045

Achromatopsia
70, 0.009, 296.813

Achromatomaly
70, 6.244, 71.226

CSS Examples

Text

The CSS property to change the color of the text to CIELCh 70, 17.923, 69.045 is called "color". The color property can be set on classes, ids or directly on the HTML element.

This example shows how text in the color `rgb(194, 166, 141)` looks like.

```
.text, #text, p{  
    color:rgb(194, 166, 141)  
}
```

If you want to add a text shadow in that color use the text-shadow property, you can generate a text shadow directly with our [CSS Text Shadow Generator](#).

Here you see how black text with a 4 pixel rgb(194, 166, 141) colored shadow looks like.

```
.shadow{ text-shadow: 4px 4px 2px rgb(194, 166, 141) }
```

Border

The CSS property to change the border of an element to CIELCh 70, 17.923, 69.045 is called "border". The border property can be set on classes, ids or directly on the HTML element.

This example shows the color as border, it can be applied via the CSS property "border" or "border-color".

```
.border, #border, table{ border:4px solid rgb(194, 166, 141) }
```

If only the border color should be changed use the property `border-color`.

```
.border{ border-color:rgb(194, 166, 141) }
```

If you want to add a box shadow in that color use:

Here you see how a box with a 4 pixel `rgb(194, 166, 141)` colored shadow looks like.

```
.boxshadow{ -moz-box-shadow:4px 4px 4px  
4px rgb(194, 166, 141); -webkit-box-  
shadow:4px 4px 4px 4px rgb(194, 166, 141);  
box-shadow:4px 4px 4px 4px rgb(194, 166,  
141) }
```

Background

The CSS property to change the background color of an element to CIELCh 70, 17.923, 69.045 is called "background". The background property can be set on classes, ids or directly on the HTML element.

```
.background, #background, body{  
background: rgb(194, 166, 141) }
```

If only the background color should be changed can be used:

```
.background{ background-color: rgb(194,  
166, 141) }
```

This example shows the color as background, it is applied via the CSS property "background".

To optimize and compress your CSS code, you can use our [online CSS compressor and optimizer](#) based on csstidy. If you want to create a linear or radial gradient as background or border, check our [CSS Gradient Generator](#).

Hey! You found this booklet interesting? Support Converting Colors with the new Membership Option!

The pro membership hides all ads, plus gives you double the colors in the color bucket, and more awesome pro features!

[Learn more, Memberships starting at \\$2.50/m!](#)

**Follow me
on Twitter!**

@ConvertingColor